

**3 SILOS AND UNLOADERS**

FOR SALE 25x90 Harvester Will help remove Delivery and financing help available 717-748-8322 or 717-748-7376

Two 20x60 harvesters with unloader. Also 100' automatic feeding system 317-583-4091, 317-463-6747

We pay top dollar for used Harvesters and Silo unloaders 717-354-4051

2060 stave silo w/Van Dale unloader, \$3,000. or Best Offer. Call 717-299-6180 after 6 p.m.

200 bu. Automatic roller mill w/5HP motor \$725; Patz 24' single chain silage conveyor w/motor, like new \$500. 717-786-2103.

**MAY-CO Plastic SILO LINERS**

Oxygen is the destroyer of fermented feeds. When installing a MAY-CO SILO LINER inside your silo, you eliminate heating, mold, shrink, and freezing to silo walls without using an additive. Liner must be ordered by Aug. 1, to insure delivery by Sept. 1. For information on prices and installation call or write.

**MAY-CO SUPPLY CO. INC.**  
430 Biscayne Rd., Lancaster, PA 17601  
717-569-1011

**USED EQUIPMENT**

- 12 Ft. Jamesway VI Unloader, Complete
- 18 Ft. Jamesway VIII Unloader, Complete
- 18 Ft. Big Jim Unloader, Complete, Like New
- 24 Ft. Badger, ~~SOLD~~ete
- 20 Ft. Jamesway VII, Completely Rebuilt

Barn Cleaner Units

- FARMWAY • JAMESWAY • STARLINE • SHUTTLE

- (1) Used 36" Roskamp Roller Mill, Like New
- (2) Used 36" Henke Roller Mills, Like New
- Used Motors • (1) #5 Ritchie Waterer
- Patz C.C.W. Chain, 160'-180', 3-4 Yrs. Old
- Jamesway Flat Link Chain ~~SOLD~~50', 3-4 Yrs. Old
- 85 Ft. Taper Board Feeder, 5 Yrs. Old

RENTAL MANURE EQUIPMENT

We Service What We Sell

**LAPP'S BARN EQUIPMENT**

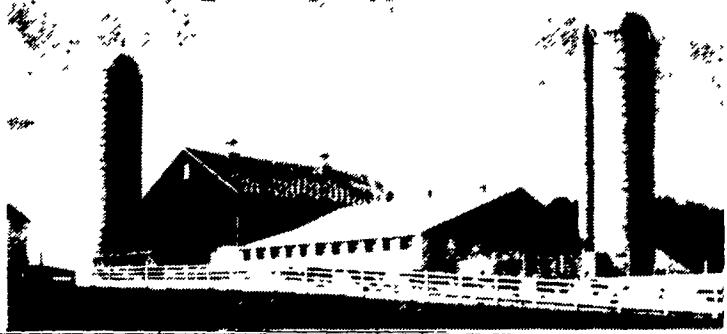
Sales & Service  
(Henry S Lapp)  
5935 Old Philadelphia Pike, Gap, PA 17527  
(717) 442-8134

**FICKES SILOS...**

Dependable-Reliable Systems That Assure Continuous Service Day After Day

**FICKES SILAGEMASTER**

Silo construction is not only an engineering science, it is also an art. Fickes Silos exemplify these principles, with their fine stave design and strength ... durability... and manufacturer's care in building.



**The Silo-Matic RING UNLOADER**  
for STRENGTH and STABILITY

The RING that has ALL 3

- 1 Right Suspension
- 2 Collector Arm Support
- 3 Rotational Drive

- Keeps Silage Level
- Keeps Walls Clean
- Uniform Discharge
- Higher Capacity

Hoisted for Rilling Insert Shows 20 In. Than Ring Unloader with 18 In. Clearance above silo wall. 12 In. clearance with more clearance with 24"-B Silo-Matic Ring

**Silo-Matic TRAVELING BELT FEEDER**  
FAST HIGH VOLUME CATTLE FEEDING WITHOUT SEPARATION

FEATURES

- Electric Motor-Driven Feed Speed Drive
- Belt Chaperon - No Feed Build-Up
- Self-Cleaning PTO-Driven Drive
- Low Maintenance Belt-Chain Feed
- No Spillage
- All-Weather Material
- Optional Automatic Reverse Drive For Continuous Feeding



**FICKES SILO COMPANY**  
NEWVILLE, PENNA. 17241  
PHONE 717-776-3129

**PEERLESS The Proven Performer**

• RUGGED CONSTRUCTION  
• FEED SAMPLES SHOW ITS SUPERIORITY

**CHALLENGER SILO MILL With BLOWER**

**Check These All New Features:**

- New Jackshaft Drive For Ear Corn Roller Mill And Blower - Blower No Longer Driven Thru The Mill. Units May Be Powered By 540 or 1000 RPM PTO for Greater Versatility.
- New Heavy Duty PTO Supplied As Standard Equipment To Meet The Demands Made By Larger HP Tractors
- New Chain Oiling System For Chain Driving The Blower, For More Trouble Free Operation.
- New Larger Hydraulic Auger Feeder With 10" By 12" Auger Moves All Grains Faster And Easier

**For Today's Feeder**  
**F6S12 & F10S12 ROLLER MILLS**

A Simple, Rugged Mill, Designed Especially For The Smaller Feeder

10" & 12" Mills In Stock

Optional Elevator Shown

Rolled Feed Is Better

The Entire Peerless Line Is Brought To You By Feedmobile Inc. Feedmobile Inc. Is One Of The World's Leading Manufacturers Of Milling Equipment For The Commercial Feed And Grain Industry.

**SALES • PARTS • SERVICE**

**Feedmobile Inc.** 1-800-528-6695 U.S.  
727 Furnace Hills Pike 1-800-528-6693 PA  
Lititz, PA 17543 717-626-2680

**4 BUILDING AND SUPPLIES**

**POLE BUILDINGS**  
Commercial Residential Horse Barns, Garages Sizes from 24x24 up 21 yr. exp., insured Baltimore Barn Builders 1-800-323-0969

Pole buildings for 2 car garages, storage sheds, shops, horse barns, arenas, warehouses and livestock barns, etc. Call Heller Buildings, 717-838-3203.

Quality Pole Buildings, 2 car garage, \$3,650 Erected. Also Horse Barns & Equipment Sheds. Local Contractor Prompt Service. 717-354-9593.

Rheem air handling unit, model MB-1400. Lebanon Co. 717-867-4007, Brad.

WANTED: Salvage rights to barns, houses, factories. 301-820-2191 Leave

**Stoltzfus Builders**  
Specialize in Pole Buildings, Framing, Roofing & Siding.  
**717-664-3540**

**POLE BUILDING QUIZ ANSWER THESE QUESTIONS TRUE OR FALSE BEFORE ORDERING YOUR BUILDING**

1. Pressure Treated Poles Should Be A Maximum Of 8' O.C.?
2. Trusses Should Be A Maximum Of 4' O.C.?
3. Side Wall Nailers Of 2x6's Are Better Than 2x4's?
4. Roof Nailers Should Be Overlapped Not Butted?
5. Trusses Should Be Certified - Documented & Have Correct Snow Loads?
6. For All The Correct Answers To Your Building Needs Call

**Clifford E. Bollinger Assoc**  
145 Wallops Hill Rd. Denver  
**215-267-6046**  
**BETTER BUILDINGS BY BOLLINGER**

**KENCOVE FENCE CRIMPING TOOL**  
4 Slot... \$48.00  
**412-459-8991**

**LOCUST FENCE POSTS,**  
picked up or delivered; hardwood lumber; pole length firewood, \$64.00 per cord.

**Berg Brothers Firewood & Logging Co.**  
**215-856-7095**

**4 BUILDING AND SUPPLIES**

**METAL ROOFING & SIDING**

**"IMPERIAL RIB" - THE SUPERIOR PANEL**

- \* **Imperial Rib** lasts 2 to 5 times longer than regular painted galvanized steel. It is the longer lasting panel.
- \* **Imperial Rib** has a unique anti-siphoning overlap feature.
- \* **Imperial Rib** covers a full 36".
- \* **Imperial Rib** has a warranted, ceremac siliconized, polyester paint system.
- \* **Imperial Rib's** high tensile galvalume panel is available in plain or in 12 gloss finished colors - red, tan, harvest gold, sherwood green, royal blue, navy blue, white, pearl gray, brown, bronze, black (5 new colors are coming soon.)
- \* **Imperial Rib** is custom cut to the inch to fill your needs in length up to 45 feet, which reduces & eliminates end laps. You get a tighter, stronger & more attractive building.
- \* **Imperial Rib** can be delivered anywhere.

**IMPERIAL RIB... Imperial Savings... Imperial Service**

If You Want A Superior Building  
Do Not Build Without "Imperial Rib"

CALL

**Conestoga Supply Company**  
New Holland, PA 717-354-2613  
Call Toll Free  
In PA 1-800-541-9464 Out of PA 1-800-544-9464