



FORD TRACTORS

New TW 20
New 7710 w/Cab, Air
New 3910
New 1710, 4WD
New 1310, 1510
New 1210 4WD
Used Ford 9N
Used Ford 9N w/Ldr. & Step Up Trans.

NEW HOLLAND

New 38 Crop Chopper
New 311 & 320 Square Balers
New 853 Round Baler
New 411 Disc Bine
New NH Manure Spreaders
Used 770 Forage Harvester
Used 36 Crop Chopper
Used 273 Baler

NEW IDEA

New NI 406 Rake
Used NI 270 Cuditioner

OTHER EQUIPMENT

New Ford 241, 12' Disc Harrow
New Ford 133 High Clearance Chisel Plow
New Ford 208, 12ft' Field Cultivator
Used Farmall BN w/ Cultivators
Used Ferguson T030
Used Farmall H
New Glencoe 12'9" Finishing Harrow
New Glencoe Soil Saver Stretch 7 Shank
New Glencoe Soil Saver 5 Shank
New Amco Heavy Duty 12' Disc Harrow
Used Windrow PU ø 2R Corn Head to fit IH 550 Harvester

Sweigard Bros. Inc.

Route 147/225
Haltfax, PA 17032
717-896-3414

FARM EQUIPMENT

MF 510 combine, diesel, air, chopper, 4 row 43 narrow corn head, good condition. \$6,800

Lehigh Co.
215-965-2191

Fox field chopper, 1 row corn head w/7' cut grass head, in A1 condition

Ask For Bob After 6 p.m.

717-379-3245

RINGTOWN FARM EQUIPMENT

NEW EQUIPMENT

1896, ROPS	800 Cyclo planter, 4R
1594 w/cab	900 Cyclo planter, 4R
235, 2WD	IH 4500 Vibra Shank
245, 2WD	IH 5100 Grain Drill
385, w/ROPS	20x6 Plain
370 disc, 11'6"	IH 4600 Vibra Shank
IH 6500 Consortill	475 Disc, 17'5"

USED EQUIPMENT

IH 1456 w/Cab Good Tires, Runs Well	IH 184 w/Mower, Like New	NH 353 Grinder Mixer Used 1 Year, Like New
-------------------------------------	--------------------------	--

IH 1256 Tractor 500 Crawler R/C Farmall H Farmall C IH 45 Baler MF 125 Baler w/thrower NH 269 Baler w/thrower JD Hay Rake Dunham Lehr Cult-mulcher 12'2" Demo. Unit Haines bulk bodies Ford 230 Disc, 17'	Potato planter Mechanical trans-planter IH forage blower IH 4 btm. semi-mtd. plow MF 82 Combine 13' Grain Head Haines Stone Pickers (2) IH 234 Corn Pickers IH 1150 Grinder-Mixer IH 455 Corn Planter IH 400 Cyclo Planter IH 181 Rotary Hoe, 15' Demo
---	--



New Cash Deals,
Low Rate Financing or
Waiver of Finance

RD 1, Ringtown, PA
717-889-3184
Since 1949

FARM EQUIPMENT

Fox 6200 SP Field Chopper
Perkins dsl., Cab & Air, Hydrostatic Drive, 3R 30" Corn Head, 5 1/2' PU head, good shape
302-492-3688

TRACTORS and SKID LOADERS

REBUILT
Perkins and Wisconsin gas or diesel power units
New
Briggs & Stratton Belts - Pulleys
Used Wisconsin Parts
Glick's Engines
Leola, PA
717-656-9734

IH 815 combine, excellent condition, all options, both heads, reasonably priced.
IH 475 18' disk, 7 1/2" spacing
IH 55 13' chisel plow
302-734-1914

FOR SALE
(1) IH silage wagon, model 110, 16' long.
Also (1) JD manure spreader, model 54.
Call
215-827-7687
weekdays

**Financing Available Thru Agri Credit Corp.
35 Used Combines To Choose From**

1984 MF 850 Hydro	\$48,000	1977 MF 750 Gear Drive	\$18,000
1984 MF 850 Hydro	\$34,000	1977 MF 760 Hydro	\$15,000
1982 MF 850 Hydro	\$29,000	1977 MF 750 Gear Drive	\$14,000
1982 MF 860 Hydro	\$32,000	1977 Gleaner M2 Gear Drive	\$12,500
1980 New Idea Uni 801 Hydro 4 Wheel Drive	\$26,000	1976 MF 760 Hydro	\$11,000
1980 New Idea Uni 818 Combine	\$5,000	1974 MF 760 Hydro	\$12,000
1980 New Idea 844 4 Row 30" Corn Head	\$4,500	1973 MF 510 Gear Drive	\$5,500
1978 MF 760 Hydro 4 Wheel Drive	\$22,000	1971 MF 510 Gear Drive	\$3,000
1978 MF 760 Hydro 960 Hrs	\$22,000	1969 MF 510 Hydro	\$7,500
1978 MF 750 Hydro	\$19,000	1969 MF 300 Gas	\$3,000
1978 MF 760 Hydro	\$18,000	1969 JD 6600 Gas	\$3,500
1978 MF 760 Hydro	\$17,000	1968 MF 510 Gear Drive	\$2,500
1978 JD 7700 Hydro	\$18,000	1968 MF 300 Gas	\$3,000
1978 JD 7700 Hydro	\$17,000	1966 MF 510 Gear Drive	\$2,500
1977 MF 750 Hydro	\$15,000	1965 MF 410 Gas	\$2,000
1977 MF 750 Hydro	\$15,000	1956 MF 82	\$700

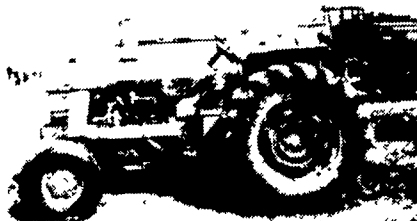
USED EQUIPMENT

Tye 10 Ft. No-Till Grain Drill	\$9,000	MF 41 3 pt. Sickle Bar Mower	\$2,400
Glenco 12 Ft. Transport Disc	\$6,200	EZ Trail 6 Ton Running Gear	\$550
Glenco 9 Tooth Soil Saver	\$5,900	EZ 475 Bu. Self Unloading Grain Cart	\$6,400
Glenco 7 Tooth Soil Saver	\$4,900	N.H. Manure Spreader	\$200
MF 351 19 1/4 ft. Soil Finisher	\$6,100	3 Pt. Rotary Cutter	\$150
Landoll 10 ft. Soil Finisher	\$3,200	JD Loader To Fit 4320	\$900
Danuser Post Driver	\$1,650	MF 12 Baler	\$700
Danuser Post Hole Digger	\$640	McCurtly 12 Ton Running Gear	\$1200
Danuser Wood Splitter	\$780	Kasten Manure Spreader	\$1500
Oliver 5-16 Auto Reset Plow	\$1,450	Ford 2-14 Plow	\$150
Ford 3 Pt. 3-16 Plow	\$600	MF 66 Spring Trp Plow	\$450
MF 82, 3-16 Plow	\$600	MF 820 Hyd. 19 ft. Wing Disc	\$8,500
MF 880 Hyd Reset 6-16 Plow	\$4,650	MF 233 10 ft. Disc Harrow	\$4,100
MF 345 Spring Reset 3-16 Plow	\$2,500	MF 124 Baler	\$3,200
MF 82 Spring Trp Plow	\$1,200	MF 120 Baler	\$1,200

DEMO & RENTAL TRACTORS

MF 290, 65 HP	\$14,800	MF 260 Harvester w/2 Row Corn Head	\$2,500
MF 270, 55 HP	\$13,900		

USED TRACTORS



USED TRACTORS

MF 1080	\$5,500
IH 454 Diesel	\$3,800
MF 1085 With Cab	\$5,500
MF 1650 Garden Tractor w/Mower	\$1,850
JD 4320 w/Cab	\$7,500
MF 245	\$5,800
MF 265 Dsl. w/Cab	

1980 Uni System, Only 1200 Hrs.



801 4 Wheel Drive Unit	\$26,000
818 Grain Combine	\$8,000
840 Feeder House	\$2,000
844N 4 Row 30" Corn Head	\$4,500
767 Harvester	\$3,300
15' Grain Head	\$1,500

**We Are Ready To Deal
We Will Consider Any Offers**

SLURRY BUGGY



1500-gal. Tank Will Load in Approx. 1 1/2 Min.

Check These Outstanding Features on the SLURRY BUGGY

A liquid manure spreader that loads and unloads and has no chains, bearings, fans, augers, or moving parts that touch manure

- ✓ A 6-inch hydraulic operated brass valve for unloading
- ✓ Has 3 different manure spreading patterns
- ✓ Tank has a float level indicator and sight glass
- ✓ A 20-inch rear manhole for easy access to tank
- ✓ Tanks are made of 5/16 thick metal
- ✓ Large air-cooled vacuum pump
- ✓ Pump has not only a primary trap, but also a large secondary moisture trap
- ✓ Pump has an air precleaner

The Slurry Buggy Spreader is designed for

- 1 Injecting liquid
 - 2 Side dressing your liquid manure on fields from lanes or roadways in wet weather
 - 3 Top dressing hay fields, etc
- Farmers rebuild your tanker with one of our new pumps (192 cfm @ 10 HG)

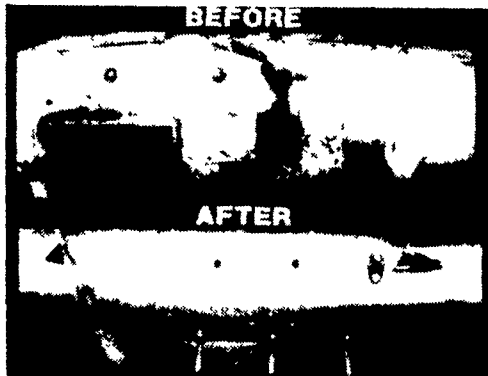
Special Price **\$950⁰⁰**

We Have Spreaders To Rent - 1500 & 2900 Gallon

FOR FREE LITERATURE CALL OR WRITE

SLURRY BUGGY EQUIPMENT COMPANY

148 WEST METZLER ROAD, RD#2,
EPHRATA, LANCASTER COUNTY, PA 17522
PHONE (717) 859-3869



SCHMIDT "HEAVY DUTY REBUILT TABLE AUGER"

Get Your Table Auger Repaired For Your Combine. Replace Complete Section. Same As New. All Makes And Models. Why Buy New, Get Your Auger Repaired SAVE!!!

Call Now For Appointment
And Price Quotation To
Have Your Auger Repaired



M.M. WEAVER & SONS, INC.

Leola, PA 17540

(717) 656-2321

Located: 4 miles West of New Holland on Route 23, 1 1/2 miles Northeast of Leola on the North Groffdale Road, 1 mile on the right, opposite Groffdale Mennonite Church.