

# THE OLD FARMER'S ALMANAC

AUG. 31-SEPT. 6, 1987  
Summer's slipping, but hold on!

First quarter of the moon Aug 31 Emma Nutt became first woman telephone operator, in Boston, Sept 1, 1878 Britain adopted the Georgian Calendar Sept 2, 1752 Los Angeles Birthday celebration Sept 4 George Gilbert, who claimed to have lived for an entire year on three cents a day, died Sept 4, 1890 Average length of days for the week 13 hours, 4 minutes First Continental Congress held Sept 5, 1774 Jesse James born Sept 5, 1847 Paintings and fights are best seen at a distance



Ask the Old Farmer: Would you please tell me the proper ingredients for making whitewash? J E C., Warwick, R I  
Stir into a gallon of sweet milk enough unslaked lime in fine powder to make it thicker than cream Add a teacup of turpentine, stir well, and put on at once with a paintbrush  
Home Hints: To clean a barbecue grill rack place it in a plastic garbage bag and add powdered dishwashing soap and hot water Tie bag tightly and let it sit outside for a couple of hours then empty it and rinse the rack well

## OLD FARMER'S WEATHER FORECAST

New England: Beginning of week showery and mild, midweek clear and seasonable, end of week showery and seasonable  
Greater New York-New Jersey: Sunny and mild at beginning of week, midweek cloudy with mild temperatures, end of week sunny, quite warm with sprinkles  
Middle Atlantic Coastal: Beginning of week clear and mild, midweek light rain with mild temperatures, end of week sunny and warm

(All Rights Reserved Yankee Publishing Incorporated Dublin, NH 03444)

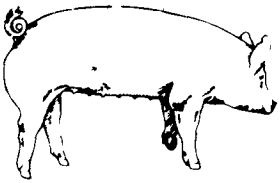
### Mercer Livestock Auction

Mercer, Pa.

Tuesday, August 25, 1987  
Report Supplied by PDA

CATTLE 326...PDA...High Choice & Prime slaughter steers 66.25-67.60, couple 68.25&68.60, Choice 62.50-66.40, Good 57-62.95, Standard 53-57.50, Utility 50.00-54.00. Choice sl. heifers 60.75-64.25, Good 55.75-61, Standard 49.50-55, Utility 41.50-49.00. Breaking

Utility & Commercial sl. cows 45.80-49, couple 49.60&49.80, Cutter & Boning Utility 41.00-46, Canner & Low Cutter 35-41.25, Shells down to 34.00. Yield Grade No. 1, 1000/1935 lbs. sl. bulls 53-59.25, No. 2, 780/1625 lbs. 44.25-51.90. Feeder Cattle: Medium Frame No 1-2, 485/695 lbs. steers 59.00-72.00



### EMERY'S BUYING STATION

OPEN TO RECEIVE  
YOUR MARKET HOGS

AT THE GREEN DRAGON MARKET  
RD 4, EPHRATA, PA 17522  
1 MILE NORTH OF EPHRATA  
ON NORTH STATE STREET.

HOURS: MONDAY, TUESDAY, and  
WEDNESDAY 7:00 A.M. to 11:30 A.M.  
215-458-5677 Residence  
717-733-9648 Office

215-458-5677 Residence  
717-733-9648 Office

**YOU ARE PAID FOR YOUR  
HOGS IMMEDIATELY**

Ken & Lois Emery, Proprietors



### ATTENTION FARMERS

EVERY MONDAY  
HATFIELD PACKING CO. and  
MOYER PACKING CO.

Will Receive Your  
Hogs and Cattle at the  
DANVILLE LIVESTOCK MARKET  
RD 4, Danville, PA

- We will receive your hogs from 8 AM to 12 Noon every Monday. Your hogs will be weighed and paid for immediately.
- We will also accept your sows & boars.
- Your cattle will be received from 12:30 to 5 P M We will either pay you for your cattle immediately or you may sell them dressed weight
- There will not be a commission or yardage fee deducted from your check.
- You may call our office Monday morning and we will be able to tell you the base price for hogs for the day.

MELVIN M. LEHMAN - Owner  
Danville Buying Station  
Phone: 717-275-2880

Medium Frame No. 1-2, 557/730 lbs. heifers 51.50-58.50. Medium Frame No. 1-2, 550/720 lbs. bulls 56.00-67.00.  
CALVES 107...Few Choice vealers 76.00-80.00, one Good 69.00, Standard & Good 85/130 lbs. 69.00-78, 65/80 lbs. 57.50-70, Utility 45/130 lbs. 27.00-52.00.  
Farm Calves: Holstein Bulls 85/120 lbs. 95.00-130, few 135.00, Hol. Heifers 80/100 lbs. 69.00-85; Beef cross bulls & heifers 70/130 lbs. 69.00-86.00.  
HOGS 155...US No. 1-2 220/260 lbs. barrows and gilts 58.75-59.75, two lots 60.25, 205/210 lbs. 57-57.50, few 1-3 195/265 lbs. 55.00-57.00. US No. 1-3 315/555 lbs. sows 42.00-48.00. Boars 38.00-41.50, few Stock 44.50-46.50.  
FEEDER PIGS 10...Two Lots US No. 1-3 25/30 lbs. feeder pigs 26.00 & 29.00 --- per head.  
SHEEP 44. High Choice & Prime 70/140 lbs. spring slaughter lambs 65.00-86.00, Good 40/70 lbs. feeder lambs 57.00-77.00. Few Slaughter ewes 21.00-30.00.  
GOATS 3...Two Medium 23.00 & 25.00, one Kid 20.00 --- per head.

### Belknap Livestock Auction

Dayton, Pa.

Wednesday, August 26, 1987

Report Supplied by PDA

CATTLE 70...PDA...(Supply included 50% Feeder Cattle)...Compared with last weeks market: Few Choice slaughter steers 61.10-64.50, few Good 58.70-60.20, couple Standard 49&50.25. Choice sl. heifer, individual 60.10, one Good 55.50, one Standard 47.00. Few Commercial sl. cows

yield grade 4.5, 4.5-4.6, 4.6-4.7, 4.7-4.8, 4.8-4.9, 4.9-5.0, 5.0-5.1, 5.1-5.2, 5.2-5.3, 5.3-5.4, 5.4-5.5, 5.5-5.6, 5.6-5.7, 5.7-5.8, 5.8-5.9, 5.9-6.0, 6.0-6.1, 6.1-6.2, 6.2-6.3, 6.3-6.4, 6.4-6.5, 6.5-6.6, 6.6-6.7, 6.7-6.8, 6.8-6.9, 6.9-7.0, 7.0-7.1, 7.1-7.2, 7.2-7.3, 7.3-7.4, 7.4-7.5, 7.5-7.6, 7.6-7.7, 7.7-7.8, 7.8-7.9, 7.9-8.0, 8.0-8.1, 8.1-8.2, 8.2-8.3, 8.3-8.4, 8.4-8.5, 8.5-8.6, 8.6-8.7, 8.7-8.8, 8.8-8.9, 8.9-9.0, 9.0-9.1, 9.1-9.2, 9.2-9.3, 9.3-9.4, 9.4-9.5, 9.5-9.6, 9.6-9.7, 9.7-9.8, 9.8-9.9, 9.9-10.0, 10.0-10.1, 10.1-10.2, 10.2-10.3, 10.3-10.4, 10.4-10.5, 10.5-10.6, 10.6-10.7, 10.7-10.8, 10.8-10.9, 10.9-11.0, 11.0-11.1, 11.1-11.2, 11.2-11.3, 11.3-11.4, 11.4-11.5, 11.5-11.6, 11.6-11.7, 11.7-11.8, 11.8-11.9, 11.9-12.0, 12.0-12.1, 12.1-12.2, 12.2-12.3, 12.3-12.4, 12.4-12.5, 12.5-12.6, 12.6-12.7, 12.7-12.8, 12.8-12.9, 12.9-13.0, 13.0-13.1, 13.1-13.2, 13.2-13.3, 13.3-13.4, 13.4-13.5, 13.5-13.6, 13.6-13.7, 13.7-13.8, 13.8-13.9, 13.9-14.0, 14.0-14.1, 14.1-14.2, 14.2-14.3, 14.3-14.4, 14.4-14.5, 14.5-14.6, 14.6-14.7, 14.7-14.8, 14.8-14.9, 14.9-15.0, 15.0-15.1, 15.1-15.2, 15.2-15.3, 15.3-15.4, 15.4-15.5, 15.5-15.6, 15.6-15.7, 15.7-15.8, 15.8-15.9, 15.9-16.0, 16.0-16.1, 16.1-16.2, 16.2-16.3, 16.3-16.4, 16.4-16.5, 16.5-16.6, 16.6-16.7, 16.7-16.8, 16.8-16.9, 16.9-17.0, 17.0-17.1, 17.1-17.2, 17.2-17.3, 17.3-17.4, 17.4-17.5, 17.5-17.6, 17.6-17.7, 17.7-17.8, 17.8-17.9, 17.9-18.0, 18.0-18.1, 18.1-18.2, 18.2-18.3, 18.3-18.4, 18.4-18.5, 18.5-18.6, 18.6-18.7, 18.7-18.8, 18.8-18.9, 18.9-19.0, 19.0-19.1, 19.1-19.2, 19.2-19.3, 19.3-19.4, 19.4-19.5, 19.5-19.6, 19.6-19.7, 19.7-19.8, 19.8-19.9, 19.9-20.0, 20.0-20.1, 20.1-20.2, 20.2-20.3, 20.3-20.4, 20.4-20.5, 20.5-20.6, 20.6-20.7, 20.7-20.8, 20.8-20.9, 20.9-21.0, 21.0-21.1, 21.1-21.2, 21.2-21.3, 21.3-21.4, 21.4-21.5, 21.5-21.6, 21.6-21.7, 21.7-21.8, 21.8-21.9, 21.9-22.0, 22.0-22.1, 22.1-22.2, 22.2-22.3, 22.3-22.4, 22.4-22.5, 22.5-22.6, 22.6-22.7, 22.7-22.8, 22.8-22.9, 22.9-23.0, 23.0-23.1, 23.1-23.2, 23.2-23.3, 23.3-23.4, 23.4-23.5, 23.5-23.6, 23.6-23.7, 23.7-23.8, 23.8-23.9, 23.9-24.0, 24.0-24.1, 24.1-24.2, 24.2-24.3, 24.3-24.4, 24.4-24.5, 24.5-24.6, 24.6-24.7, 24.7-24.8, 24.8-24.9, 24.9-25.0, 25.0-25.1, 25.1-25.2, 25.2-25.3, 25.3-25.4, 25.4-25.5, 25.5-25.6, 25.6-25.7, 25.7-25.8, 25.8-25.9, 25.9-26.0, 26.0-26.1, 26.1-26.2, 26.2-26.3, 26.3-26.4, 26.4-26.5, 26.5-26.6, 26.6-26.7, 26.7-26.8, 26.8-26.9, 26.9-27.0, 27.0-27.1, 27.1-27.2, 27.2-27.3, 27.3-27.4, 27.4-27.5, 27.5-27.6, 27.6-27.7, 27.7-27.8, 27.8-27.9, 27.9-28.0, 28.0-28.1, 28.1-28.2, 28.2-28.3, 28.3-28.4, 28.4-28.5, 28.5-28.6, 28.6-28.7, 28.7-28.8, 28.8-28.9, 28.9-29.0, 29.0-29.1, 29.1-29.2, 29.2-29.3, 29.3-29.4, 29.4-29.5, 29.5-29.6, 29.6-29.7, 29.7-29.8, 29.8-29.9, 29.9-30.0, 30.0-30.1, 30.1-30.2, 30.2-30.3, 30.3-30.4, 30.4-30.5, 30.5-30.6, 30.6-30.7, 30.7-30.8, 30.8-30.9, 30.9-31.0, 31.0-31.1, 31.1-31.2, 31.2-31.3, 31.3-31.4, 31.4-31.5, 31.5-31.6, 31.6-31.7, 31.7-31.8, 31.8-31.9, 31.9-32.0, 32.0-32.1, 32.1-32.2, 32.2-32.3, 32.3-32.4, 32.4-32.5, 32.5-32.6, 32.6-32.7, 32.7-32.8, 32.8-32.9, 32.9-33.0, 33.0-33.1, 33.1-33.2, 33.2-33.3, 33.3-33.4, 33.4-33.5, 33.5-33.6, 33.6-33.7, 33.7-33.8, 33.8-33.9, 33.9-34.0, 34.0-34.1, 34.1-34.2, 34.2-34.3, 34.3-34.4, 34.4-34.5, 34.5-34.6, 34.6-34.7, 34.7-34.8, 34.8-34.9, 34.9-35.0, 35.0-35.1, 35.1-35.2, 35.2-35.3, 35.3-35.4, 35.4-35.5, 35.5-35.6, 35.6-35.7, 35.7-35.8, 35.8-35.9, 35.9-36.0, 36.0-36.1, 36.1-36.2, 36.2-36.3, 36.3-36.4, 36.4-36.5, 36.5-36.6, 36.6-36.7, 36.7-36.8, 36.8-36.9, 36.9-37.0, 37.0-37.1, 37.1-37.2, 37.2-37.3, 37.3-37.4, 37.4-37.5, 37.5-37.6, 37.6-37.7, 37.7-37.8, 37.8-37.9, 37.9-38.0, 38.0-38.1, 38.1-38.2, 38.2-38.3, 38.3-38.4, 38.4-38.5, 38.5-38.6, 38.6-38.7, 38.7-38.8, 38.8-38.9, 38.9-39.0, 39.0-39.1, 39.1-39.2, 39.2-39.3, 39.3-39.4, 39.4-39.5, 39.5-39.6, 39.6-39.7, 39.7-39.8, 39.8-39.9, 39.9-40.0, 40.0-40.1, 40.1-40.2, 40.2-40.3, 40.3-40.4, 40.4-40.5, 40.5-40.6, 40.6-40.7, 40.7-40.8, 40.8-40.9, 40.9-41.0, 41.0-41.1, 41.1-41.2, 41.2-41.3, 41.3-41.4, 41.4-41.5, 41.5-41.6, 41.6-41.7, 41.7-41.8, 41.8-41.9, 41.9-42.0, 42.0-42.1, 42.1-42.2, 42.2-42.3, 42.3-42.4, 42.4-42.5, 42.5-42.6, 42.6-42.7, 42.7-42.8, 42.8-42.9, 42.9-43.0, 43.0-43.1, 43.1-43.2, 43.2-43.3, 43.3-43.4, 43.4-43.5, 43.5-43.6, 43.6-43.7, 43.7-43.8, 43.8-43.9, 43.9-44.0, 44.0-44.1, 44.1-44.2, 44.2-44.3, 44.3-44.4, 44.4-44.5, 44.5-44.6, 44.6-44.7, 44.7-44.8, 44.8-44.9, 44.9-45.0, 45.0-45.1, 45.1-45.2, 45.2-45.3, 45.3-45.4, 45.4-45.5, 45.5-45.6, 45.6-45.7, 45.7-45.8, 45.8-45.9, 45.9-46.0, 46.0-46.1, 46.1-46.2, 46.2-46.3, 46.3-46.4, 46.4-46.5, 46.5-46.6, 46.6-46.7, 46.7-46.8, 46.8-46.9, 46.9-47.0, 47.0-47.1, 47.1-47.2, 47.2-47.3, 47.3-47.4, 47.4-47.5, 47.5-47.6, 47.6-47.7, 47.7-47.8, 47.8-47.9, 47.9-48.0, 48.0-48.1, 48.1-48.2, 48.2-48.3, 48.3-48.4, 48.4-48.5, 48.5-48.6, 48.6-48.7, 48.7-48.8, 48.8-48.9, 48.9-49.0, 49.0-49.1, 49.1-49.2, 49.2-49.3, 49.3-49.4, 49.4-49.5, 49.5-49.6, 49.6-49.7, 49.7-49.8, 49.8-49.9, 49.9-50.0, 50.0-50.1, 50.1-50.2, 50.2-50.3, 50.3-50.4, 50.4-50.5, 50.5-50.6, 50.6-50.7, 50.7-50.8, 50.8-50.9, 50.9-51.0, 51.0-51.1, 51.1-51.2, 51.2-51.3, 51.3-51.4, 51.4-51.5, 51.5-51.6, 51.6-51.7, 51.7-51.8, 51.8-51.9, 51.9-52.0, 52.0-52.1, 52.1-52.2, 52.2-52.3, 52.3-52.4, 52.4-52.5, 52.5-52.6, 52.6-52.7, 52.7-52.8, 52.8-52.9, 52.9-53.0, 53.0-53.1, 53.1-53.2, 53.2-53.3, 53.3-53.4, 53.4-53.5, 53.5-53.6, 53.6-53.7, 53.7-53.8, 53.8-53.9, 53.9-54.0, 54.0-54.1, 54.1-54.2, 54.2-54.3, 54.3-54.4, 54.4-54.5, 54.5-54.6, 54.6-54.7, 54.7-54.8, 54.8-54.9, 54.9-55.0, 55.0-55.1, 55.1-55.2, 55.2-55.3, 55.3-55.4, 55.4-55.5, 55.5-55.6, 55.6-55.7, 55.7-55.8, 55.8-55.9, 55.9-56.0, 56.0-56.1, 56.1-56.2, 56.2-56.3, 56.3-56.4, 56.4-56.5, 56.5-56.6, 56.6-56.7, 56.7-56.8, 56.8-56.9, 56.9-57.0, 57.0-57.1, 57.1-57.2, 57.2-57.3, 57.3-57.4, 57.4-57.5, 57.5-57.6, 57.6-57.7, 57.7-57.8, 57.8-57.9, 57.9-58.0, 58.0-58.1, 58.1-58.2, 58.2-58.3, 58.3-58.4, 58.4-58.5, 58.5-58.6, 58.6-58.7, 58.7-58.8, 58.8-58.9, 58.9-59.0, 59.0-59.1, 59.1-59.2, 59.2-59.3, 59.3-59.4, 59.4-59.5, 59.5-59.6, 59.6-59.7, 59.7-59.8, 59.8-59.9, 59.9-60.0, 60.0-60.1, 60.1-60.2, 60.2-60.3, 60.3-60.4, 60.4-60.5, 60.5-60.6, 60.6-60.7, 60.7-60.8, 60.8-60.9, 60.9-61.0, 61.0-61.1, 61.1-61.2, 61.2-61.3, 61.3-61.4, 61.4-61.5, 61.5-61.6, 61.6-61.7, 61.7-61.8, 61.8-61.9, 61.9-62.0, 62.0-62.1, 62.1-62.2, 62.2-62.3, 62.3-62.4, 62.4-62.5, 62.5-62.6, 62.6-62.7, 62.7-62.8, 62.8-62.9, 62.9-63.0, 63.0-63.1, 63.1-63.2, 63.2-63.3, 63.3-63.4, 63.4-63.5, 63.5-63.6, 63.6-63.7, 63.7-63.8, 63.8-63.9, 63.9-64.0, 64.0-64.1, 64.1-64.2, 64.2-64.3, 64.3-64.4, 64.4-64.5, 64.5-64.6, 64.6-64.7, 64.7-64.8, 64.8-64.9, 64.9-65.0, 65.0-65.1, 65.1-65.2, 65.2-65.3, 65.3-65.4, 65.4-65.5, 65.5-65.6, 65.6-65.7, 65.7-65.8, 65.8-65.9, 65.9-66.0, 66.0-66.1, 66.1-66.2, 66.2-66.3, 66.3-66.4, 66.4-66.5, 66.5-66.6, 66.6-66.7, 66.7-66.8, 66.8-66.9, 66.9-67.0, 67.0-67.1, 67.1-67.2, 67.2-67.3, 67.3-67.4, 67.4-67.5, 67.5-67.6, 67.6-67.7, 67.7-67.8, 67.8-67.9, 67.9-68.0, 68.0-68.1, 68.1-68.2, 68.2-68.3, 68.3-68.4, 68.4-68.5, 68.5-68.6, 68.6-68.7, 68.7-68.8, 68.8-68.9, 68.9-69.0, 69.0-69.1, 69.1-69.2, 69.2-69.3, 69.3-69.4, 69.4-69.5, 69.5-69.6, 69.6-69.7, 69.7-69.8, 69.8-69.9, 69.9-70.0, 70.0-70.1, 70.1-70.2, 70.2-70.3, 70.3-70.4, 70.4-70.5, 70.5-70.6, 70.6-70.7, 70.7-70.8, 70.8-70.9, 70.9-71.0, 71.0-71.1, 71.1-71.2, 71.2-71.3, 71.3-71.4, 71.4-71.5, 71.5-71.6, 71.6-71.7, 71.7-71.8, 71.8-71.9, 71.9-72.0, 72.0-72.1, 72.1-72.2, 72.2-72.3, 72.3-72.4, 72.4-72.5, 72.5-72.6, 72.6-72.7, 72.7-72.8, 72.8-72.9, 72.9-73.0, 73.0-73.1, 73.1-73.2, 73.2-73.3, 73.3-73.4, 73.4-73.5, 73.5-73.6, 73.6-73.7, 73.7-73.8, 73.8-73.9, 73.9-74.0, 74.0-74.1, 74.1-74.2, 74.2-74.3, 74.3-74.4, 74.4-74.5, 74.5-74.6, 74.6-74.7, 74.7-74.8, 74.8-74.9, 74.9-75.0, 75.0-75.1, 75.1-75.2, 75.2-75.3, 75.3-75.4, 75.4-75.5, 75.5-75.6, 75.6-75.7, 75.7-75.8, 75.8-75.9, 75.9-76.0, 76.0-76.1, 76.1-76.2, 76.2-76.3, 76.3-76.4, 76.4-76.5, 76.5-76.6, 76.6-76.7, 76.7-76.8, 76.8-76.9, 76.9-77.0, 77.0-77.1, 77.1-77.2, 77.2-77.3, 77.3-77.4, 77.4-77.5, 77.5-77.6, 77.6-77.7, 77.7-77.8, 77.8-77.9, 77.9-78.0, 78.0-78.1, 78.1-78.2, 78.2-78.3, 78.3-78.4, 78.4-78.5, 78.5-78.6, 78.6-78.7, 78.7-78.8, 78.8-78.9, 78.9-79.0, 79.0-79.1, 79.1-79.2, 79.2-79.3, 79.3-79.4, 79.4-79.5, 79.5-79.6, 79.6-79.7, 79.7-79.8, 79.8-79.9, 79.9-80.0, 80.0-80.1, 80.1-80.2, 80.2-80.3, 80.3-80.4, 80.4-80.5, 80.5-80.6, 80.6-80.7, 80.7-80.8, 80.8-80.9, 80.9-81.0, 81.0-81.1, 81.1-81.2, 81.2-81.3, 81.3-81.4, 81.4-81.5, 81.5-81.6, 81.6-81.7, 81.7-81.8, 81.8-81.9, 81.9-82.0, 82.0-82.1, 82.1-82.2, 82.2-82.3, 82.3-82.4, 82.4-82.5, 82.5-82.6, 82.6-82.7, 82.7-82.8, 82.8-82.9, 82.9-83.0, 83.0-83.1, 83.1-83.2, 83.2-83.3, 83.3-83.4, 83.4-83.5, 83.5-83.6, 83.6-83.7, 83.7-83.8, 83.8-83.9, 83.9-84.0, 84.0-84.1, 84.1-84.2, 84.2-84.3, 84.3-84.4, 84.4-84.5, 84.5-84.6, 84.6-84.7, 84.7-84.8, 84.8-84.9, 84.9-85.0, 85.0-85.1, 85.1-85.2, 85.2-85.3, 85.3-85.4, 85.4-85.5, 85.5-85.6, 85.6-85.7, 85.7-85.8, 85.8-85.9, 85.9-86.0, 86.0-86.1, 86.1-86.2, 86.2-86.3, 86.3-86.4, 86.4-86.5, 86.5-86.6, 86.6-86.7, 86.7-86.8, 86.8-86.9, 86.9-87.0, 87.0-87.1, 87.1-87.2, 87.2-87.3, 87.3-87.4, 87.4-87.5, 87.5-87.6, 87.6-87.7, 87.7-87.8, 87.8-87.9, 87.9-88.0, 88.0-88.1, 88.1-88.2, 88.2-88.3, 88.3-88.4, 88.4-88.5, 88.5-88.6, 88.6-88.7, 88.7-88.8, 88.8-88.9, 88.9-89.0, 89.