

Versatile Tomatoes

(Continued from Page B6)

Sprinkle tomatoes with salt. Let stand one hour. Drain, cover tomatoes with boiling water. Let stand 5 minutes. Drain.

Add grated rind and pulp of orange. Mix all ingredients and simmer until thickened. Pack in jars and process 20 minutes or freeze. If the mincemeat is used for pie, dot with butter when ready to bake in pie crust.

Mary Gagovitz
Leighton

TOMATO BREAD

1 package active dry yeast
¼ cup warm water (105-115 degrees)
¼ teaspoon sugar
2 cups tomato juice, fresh or canned

2 tablespoons butter
2 teaspoons salt
2 tablespoons sugar
6-6½ cups flour

Combine yeast with warm water and ¼ teaspoon sugar in small bowl. Let sit until foamy, about 10 minutes. Heat tomato juice and butter in a saucepan just until warm. Butter does not need to melt. In large bowl, combine salt; 2 tablespoons sugar and 2 cups flour. Blend well. Add tomato juice mixture and yeast mixture to flour mixture and beat 50 strokes. With wooden spoon, gradually stir in remainder of flour, ½ cup at a time to make a stiff dough.

Dough is ready when it begins to pull away from sides of the bowl. Don't add more flour than neces-

sary. Turn out on a floured surface and knead, adding only enough flour as needed until dough is smooth and satiny—about 10 minutes. Put dough in greased bowl, turning once to grease top. Cover bowl with a towel and set in warm place to rise until double in bulk. Takes about 1½ hours.

Punch down; turn out on lightly floured board and knead to remove air bubbles. Divide in 2 portions. Shape into smooth ovals. Pinch bottom seam, turn ends under and seal.

Put in lightly greased pans; seam side down; cover and let rise again in a warm place until almost double (about 45 minutes). Bake in 350 degree oven about 45 minutes until nicely browned. Makes 2 loaves.

Genevieve Voneida
Muncy

Sewing Pile Knits, Knitted Terry Cloth, Velour Or Chenille

The rich texture and stretch of pile knits, terry cloth and chenille — while great for comfort and good looks — can make sewing a little tricky. Following are some tips for best results, suggests Maryetta Dorricott, Delaware County Cooperative Extension Home Economist. . .

Because these fabrics lend themselves to soft shapes rather than tailored lines, look for a pattern with simple, uncluttered construction — few pattern pieces, darts or seams. Unpressed pleats, gathers and soft folds all work well.

Choose styles with wrap, drawstring or elasticized details

instead of a zipper and button-holes, which may pull or distort the pile. Check your fabric with the 'stretch guide' for knits on the pattern. Before you sew, make any alterations in the pattern before you cut; removing stitches from pile fabric can be difficult.

Use a "with nap" fabric layout to insure consistency of shading. To make cutting easier and ensure that cutting lines are followed accurately, cut with the pile, a single layer at a time. Use ballpoint pins or tailor's tacks to transfer pattern markings to fabric. A tracing wheel may mar the pile or stretch the fabric, and pencil or chalk markings will get lost in the pile.

ARMSTRONG

FARM MUSCLE



All Orders
Over \$250
Delivered Free
To Your Farm!
(Orders Under \$250...
Only A Small Extra Fee)

We Install Tires On Your Farm

- Centre Hall • Williamsport
- Sunbury • Allentown
- North Penna. • New Jersey
- Northern Maryland

Ask About Our 5 Year Guarantee On Rear Tires

Strongest In The Country

OFFER EXTENDED...

FREE MOUNTING ON PAIRS Super Hi-Power Lug Radials

New!
**5-Year
Warranty**

14 9R28 10 Ply	\$325.00
16 9R28 10 Ply	\$399.00
18 4R34 6 Ply	\$399.00
16R38 6 Ply	\$429.00
18 4R38 6 Ply	\$459.00
18 4R38 8 Ply	\$489.00
18 4R26 10 Ply	\$449.00
20R34 8 Ply	\$639.00
20 8R38 8 Ply	\$649.00
20 8R38 10 Ply	\$699.00

ARMSTRONG

FARM MUSCLE

ARMSTRONG FARM TIRES

Hi Power Lug



New!
**5-Year
Warranty**

11 2x2- 4 Ply	\$106.00
11 2x24 6 Ply	\$125.00
14 9x24 4 Ply	\$161.00
14 9x24 6 Ply	\$172.00
14 9x24 8 Ply	\$200.00
16 9x24 6 Ply	\$200.00
16 9x24 8 Ply	\$220.00
14 9x26 6 Ply	\$180.00
18 4x26 6 Ply	\$247.00
23 1x26 8 Ply	\$525.00
11 2x28 4 Ply	\$120.00
12 4x28 4 Ply	\$137.00
13 6x28 4 Ply	\$150.00
13 6x28 6 Ply	\$165.00
13 6x28 8 Ply	\$195.00
14 9x28 4 Ply	\$165.00
14 9x28 6 Ply	\$185.00
16 9x28 6 Ply	\$225.00
16 9x28 8 Ply	\$245.00
16 9x30 6 Ply	\$240.00
18 4x28 6 Ply	\$300.00
18 4x30 6 Ply	\$270.00
23 1x30 8 Ply	\$650.00
24 5x32 10 Ply	\$775.00
16 9x34 6 Ply	\$270.00
18 4x34 6 Ply	\$310.00
18 4x34 8 Ply	\$335.00
20 8x34 6 Ply	\$479.00
20 8x34 8 Ply	\$510.00
23 1x26 10 Ply	\$600.00
23 1x34 8 Ply	\$689.00
11 2x38 4 Ply	\$147.00
12 4x38 4 Ply	\$175.00
13 6x38 4 Ply	\$185.00
13 6x38 6 Ply	\$205.00
14 9x38 6 Ply	\$224.00
15 5x38 6 Ply	\$235.00
15 5x38 8 Ply	\$260.00
16 9x38 6 Ply	\$295.00
16 9x38 8 Ply	\$325.00
18 4x38 6 Ply	\$340.00
18 4x38 8 Ply	\$380.00
20 8x38 8 Ply	\$520.00

Service Available....
Call For Quote!

ARMSTRONG

Loader- Dozer



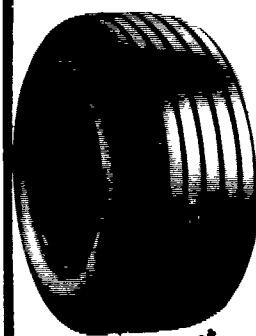
★ TUBELESS ★	
16 9x24 8 Ply	\$265.00
16 9x24 10 Ply	\$330.00
17 5Lx24 6 Ply	\$245.00
17 5x24 8 Ply	\$270.00
15 5x25 12 Ply	\$310.00
17 5x25 12 Ply	\$440.00
19 5Lx24 10 Ply	\$390.00
19 5Lx24 12 Ply	\$430.00
12Lx24 12 Ply	\$500.00
20 5x25 12 Ply	\$643.00
23 5x25 12 Ply	\$960.00
23 5x25 16 Ply	\$1 000.00

ARMSTRONG

★ TUBE TYPE ★	
14 9x24 6 Ply	\$200.00
14 9x24 8 Ply	\$220.00
16 9x24 6 Ply	\$220.00
16 9x24 8 Ply	\$235.00
16 9x24 10 Ply	\$280.00
17 5Lx24 8 Ply	\$240.00
16 9x28 8 Ply	\$260.00
18 4x28 10 Ply	\$340.00
20 5x25 12 Ply	\$340.00
23 5x25 16 Ply	\$425.00
1300x24 10 Ply	\$225.00
1300x24 12 Ply	\$245.00
1400x24 10 Ply	\$255.00
1400x24 12 Ply	\$280.00

ARMSTRONG

WAGON TIRES



Special Discount
\$5.00
OFF These Prices

26 1200x12 4 Ply	\$49.00
8 5Lx14 6 Ply	\$41.00
9 5Lx14 6 Ply	\$44.00
9 5Lx14 8 Ply	\$49.50
9 5Lx15 6 Ply	\$42.00
9 5Lx15 8 Ply	\$44.00
11Lx14 6 Ply	\$49.00
11Lx15 6 Ply	\$43.00
11Lx15 8 Ply	\$47.00
11Lx15 10 Ply	\$60.00
1000x15 8 Ply Tubeless	\$50.00
11Lx16 8 Ply	\$58.00
11Lx16 10 Ply Tubeless	\$74.00
12 5Lx15 10 Ply	\$75.00
12 5Lx16 14 Ply	\$85.00
12 5Lx15 12 Ply	\$87.00
14Lx16 1 12 Ply	\$140.00
16 5Lx16 1 10 Ply Tubeless	\$160.00
25x7 50x15 4 Ply Tubeless	\$44.00
25x7 50x15 6 Ply Tubeless	\$49.00
27x9 50x15 4 Ply Tubeless	\$53.00
27x9 50x15 6 Ply Tubeless	\$60.00
27x9 50x15 8 Ply Tubeless	\$65.00
31x13 50x15 6 Ply Tubeless	\$88.00
31x13 50x15 8 Ply Tubeless	\$99.00

• WAGON TIRES SHIPPED UPS - NO CHARGE! •

CONTRACTOR F-3

11Lx15 8 Ply	\$80.00
11Lx16 8 Ply	\$92.00
11Lx16 10 Ply	\$98.00
750 800x16 10 Ply	\$80.00
11Lx16 12 Ply	\$130.00
145 75 16 1 10 Ply	\$225.00

3 WHEELER TIRES

20x7 00-8	\$35.00
21x7 00-8	\$33.50
22x11 00-8	\$38.01
22x8 00-10	\$40.75
22x11 00 10	\$45.95
25x12-9	\$54.71
18x950-8	\$30.65

ARMSTRONG

**USED
GRASS
TIRES
IN
STOCK!**

8 3x24	\$100.00
9 5x24	\$112.00
14 9x24 6 Ply	\$200.00
16 9x24 6 Ply	\$210.00
18 4x16 1 6 Ply	\$245.00
18 4x26 6 Ply	\$360.00
13 6x28 6 Ply	\$225.00

SKID LOADER TIRES

570x12 4 Ply	\$40.00
23 850x12 4 Ply	\$47.00
27 850x15 4 Ply	\$51.00
27 850x15 6 Ply	\$65.00
27 1050x15 6 Ply	\$70.00
700x15 6 Ply	\$65.00
750x15 6 Ply	\$68.00
10 16 5 6 Ply	\$80.00
12 16 5 8 Ply	\$120.00
Steel Shield 10 16 5 6 Ply	\$95.00

Above Tires Shipped
To You FREE

Small Rear Farm Tires



750x20 4 Ply	\$59.95
750x24 4 Ply	\$64.95
8 3x24 4 Ply	\$82.00
9 5x24 4 Ply	\$92.00
11 2x34 4 Ply	\$142.00
11 2x36 4 Ply	\$144.00
12 4x24 4 Ply	\$123.00
12 4x36 4 Ply	\$190.00
13 9x36 6 Ply	\$200.00

Central Warehouse
Mt. Joy, Pa.
717-653-1260

Serving Farmers In
Penna., New Jersey, Northern
Maryland and Delaware

Branch Warehouse
Northumberland, Pa.
717-473-3974

MUMMAU TIRE

For Service And Out-of-State, Call: 717-653-1260
In Pa., Call Toll Free: 1-800-222-1729