

Dairy and Livestock Sales

Public Auction Register

Closing Date Monday, 5:00 P.M. of each week's publication

FRI. & SAT. OCT. 16 & 17 - Associated Builders & Contractors, (Keystone Chapter), Middletown, PA. Construction Equipment, Trucks & Trailers. Consignments now being accepted. Vilsmeier Auction Co., Inc. SAT. OCT. 17 - HH, Antiques. For: Charles Shertzer, RD1, Millersville, PA. Paul E. Martin & John D. Stauffer, Aucts.

Kurtz, Elton Homing Farm Agy. SAT. OCT. 24 - Consignment Farm Toy Auction at 5PM at Lancaster Mennonite High School Gym. Toy Show on Fri. evening and Sat. from 8:30 a.m. Dale Stoltzfus, Auct. Dave Nolt, Mgr., 717-768-3554.

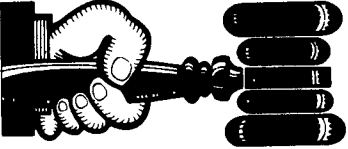
SAT. OCT. 17 - 10AM 20 Acre Farm, Stone House & Barn, 4 mis. N. of Morgantown just off Rt. 10. Terms by: Harold L. & Marjorie D.

SALE EVERY TUESDAY
Graded Sale
1st Tuesday each month
2 P.M.
Horse Auction
2nd Saturday each month
1 P.M.

FAUQUIER LIVESTOCK EXCHANGE
Marshall, Va
703-364-1566

NOTICE

To assure that your Public Sale appears in the Public Sale Section we must have your advertisement by 4 P.M. Tuesday of each week's publication.



AUCTIONEER'S DIRECTORY

PROFESSIONAL Auctioneering

PAULE MARTIN R.D. 1, Box 553 Stevens, Pa 17578
JOHN D STAUFFER 217 Andrea Dr. Littitz, Pa. 17543

Complete Auction Service We assist you and advise you from the planning stages of your auction to the completion of your auction

For A Consultation In Your Home Call Paul (717) 733 3511 - John (717) 665-5099 Licensed and Bonded



KREIDER & KLINE AUCTIONEERS

COMPLETE PROFESSIONAL AUCTION SERVICE
REAL ESTATE - FARMS & RESIDENTIAL
PERSONAL PROPERTY - ANTIQUES -
FARM STOCK SALES - LIQUIDATIONS

RANDAL V. KLINE AUCTIONEER REALTOR
717 733 1006
717 569 8701
LLOYD H. KREIDER AUCTIONEER
717 786 3394

ROY E. GOOD, JR.
RD 1 BOX 151 A
DENVER PA 17517
215 445 4309

Auctioneer:
Steve Petersheim:
Steve Jr.



COMPLETE AUCTION SERVICE

Antiques
Household Goods
Farm Equipment
Real Estate

Take Note - Our New Phone Number
215-593-2828

Horst & Kling, Aucts.

SAT. OCT. 31 - 65 Acre Limestone Farm, Farm Machinery & Personal Property. Located along Camp Rodgers Road, Ephrata, PA. For: Fred A. & Naomi W. Brubaker, Kline & Kreiders Auctioneers 717-733-1006.

NOVEMBER

SAT. NOV. 7 - Real Estate, Personal Property, Farm Mach. & Tools. Rt. 625 to

town of Bowmansville, turn east on Maple Grove Road, continue across turnpike bridge first lane left. Terms by: William G. Musser, Rog Good Jr., Randall Kline & Lloyd Kreider, Aucts.

John D. Stauffer, Aucts. WED. NOV. 11 - 11:30AM 140 Acre Dairy Farm, 120 Head Hi Grade Reg. Holsteins. Salsbury Twp., Lanc. Co., PA. 5 mis. SE of New

Holland on Gault Rd., from Rt. 322 go S. on Rt. 897 to Gault Rd. left. John E. & Lydia Fisher, Owners. Steve Petersheim & Steve Jr., Aucts.

SAT. NOV. 7 - Farm Eq., Tools, Antiques & HH. RD 3, Mount Joy, PA. Moses N. and Lizzie Mae Good. Paul E. Martin & John D. Stauffer, Aucts.

MON. NOV. 9 - 2PM 72 Acre Limestone Farm in West Earl Twp. Between Farmersville and Browns-town. Phares W. & Anna Mae Hurst. Paul E. Martin &

LIVESTOCK HAULING

By
CHEYENNES LIL' ACRES
Local or Long Distance
Phone Glen Rock, PA
717-235-1003

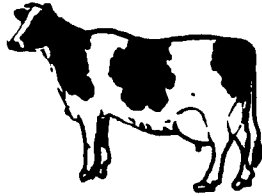
PUBLIC AUCTION

DAIRY CATTLE- DAIRY EQUIPMENT-
SOME MACHINERY

THURSDAY, SEPTEMBER 3,
AT 11:00 A.M.

LOCATED IN SNYDER CO., 2 MILES SOUTH OF MT. PLEASANT MILLS, PA., TURN SOUTH OFF ROUTE 35 AT BLINKER LIGHT ONTO ROUTE 104, ABOUT 1 1/2 MILES TURN EAST (AT D. & D. AUTO SALES), TRAVEL 1 MILE, TURN RIGHT (YELLOW HOUSE), 1/2 MILE TO FARM.

90 HEAD
TOP HOLSTEINS
(4 REG.)



66 milk cows, 16 bred heifers and 8 heifer calves, 33 due to freshen Aug., Sept., Oct. (10 are bred heifers), and 6 heifers due Dec. and Jan. 23 in the herd are milking as 2 yrs. olds w/R.H.A. 16558 M.- 3.6- 597 F. A good herd of typey cows milked in regular stahls. A FEW FEATURES SELLING. A big strong reg. Canadian Jetstar due before sale. Creek dtr. proj. at 25,233M., 764F., a beautiful Jemini dtr. making 20,000 M., 700 F., 2 yrs. old. Old Kernal E.T. making 16,000M., big strong fancy 2 yrs. old Elevate dtr. making over 15,000 M., 2 yrs. old Lennon E.T. dtr. w/beautiful udder making over 15,000 M., 3 full sisters by Spirit sell, red and white bred heifer by Rory Red E.T. and other good record animals. SIRES REPRESENTED- Spirit, Jemini, Creek, Elevate, Lone Ranger, Neutron E.T., Kernal E.T., and Lennon E.T. SERVICE SIRES: Chairman, Count, Sammy E.T., Nite Train, Helios, Potts, plus sample sires.

CERTIFIED- ACCREDITED-
CALFHOOD VACC.-
PREGNANCY CHECKED-
D.H.I. RECORDS- CATALOGS- TENT
DAIRY EQUIPMENT-
SOME MACHINERY

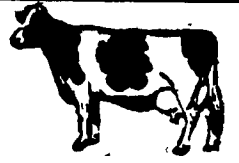
Mueller 1000 gals. tank w/2-3 H.P. compressors, Mueller 10 gals. free-heater, Schluter dumping station, 2 DeLaval 55 lbs. milkers and 3 Surge 50 lbs. milkers. N.H. no. 352 grinder mixer, N.H. no. 770 harvester w/pickup and 2 row narrow corn heads, 2 Lamco forage wagons (1 w/roof), Owatona 34 ft. grain and bale elevator, J.D. no. 148 hyd. loader w/8 ft. material bucket.

NO SMALL ITEMS; SALE WILL START W/MACHINERY AND MILK EQUIPMENT
TERMS- CASH OR GOOD CHECK
JAMES M. HUNSBERGER
Mt. Pleasant Mills, Pa.
717-539-8493

Mark Glick- Auctioneer
AU-349-L
Reedsville, Pa. Food Stand

Alan Narehood- Pedigrees
Beavertown, Pa.
717-658-7496

NEW HOLLAND SALES STABLES, INC.



Located 12 Miles East of Lancaster, Pa, just off Rt. 23, New Holland.

SPECIAL DAIRY SALE CONSIGNMENTS For WEDNESDAY, SEPTEMBER 2, 1987

Helper Sale Starts At 11:00 A.M.

1 LOAD PUREBRED AND GRADE CANADIAN COWS, FRESH AND SPRINGERS, CONSIGNED BY LEROY SMUCKER.

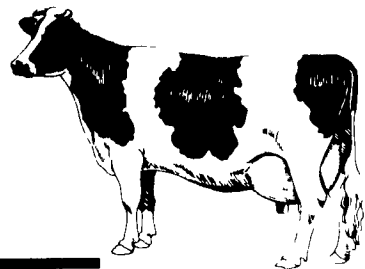
ALSO SELLING

- 1 load fresh and springer cows consigned by Norman and David Kolb.
- 1 load fresh and springer cows consigned by Merle Brenneman.
- 1 load fresh and springer cows consigned by Marvin Eshleman.
- 1 load fresh and springer cows consigned by Raymond Smucker.
- 1 load fresh cows consigned by Dale Hostetter.
- 1 load fresh cows consigned by Alfred Albright.
- 1 load Canadian cows, fresh and springers, (half registered - half grade), including a very good Sheak daughter, consigned by Roy Johncox.

For More Information Contact:

Abe Diffenbach
717-354-4341

Norman Kolb
717-397-5538



CUMBERLAND VALLEY DAIRY SALE

120+ REG. AND HI-GRADE HOLSTEINS
AND COLORED BREEDS

FRIDAY EVENING, SEPT. 4TH-7:30 P.M.
AT THE FORMER CHAMBERSBURG LIVESTOCK
LOCATED 1/4 MILE WEST OF INTERSTATE 81-EXIT 5

FEATURING: Mr. and Mrs. Jason Petri's complete Holstein herd due to Labor Problems. This "GMS" HERD OF HI-GRADE HOLSTEINS CONSIST OF 54 FANCY MILK COWS WITH A 17,189# 583# FAT AVERAGE AND 38 SHARP "GMS" HEIFERS MAJORITY OPEN FROM 200-700# AND CALFHOOD VACCINATED. 50% OF THIS YOUNG HERD HAS BEEN FRESH SINCE MAY AND 25% WILL FRESHEN BEFORE THE END OF NOV. SIRES OF THIS FANCY HERD ARE MILKMASTER, CHEF, FROSTY, PETE, MERIT, MONITOR, ASTRO, MINUTEMAN, SUGARDADDY, APPOLLA J, SATURN, KING, POLAN AND OTHERS.

Another load of big fancy recently fresh Reg. and Hi-Grade Holsteins milking 80#-90# from a top Virginia herd. A-I sired Holstein Springers from plus sires and top producing Franklin County herds. Several loads of 1st, 2nd, 3rd and 4th calf cows recently fresh and soon to freshen from Cumberland, Fulton, Adams and Washington County, Maryland. Short bred Holstein heifers, open heifers, a few colored breed dairy cows and a load of Holstein springing heifers and cows plus 2 Reg. bulls from 20,000 + Dams & Plus Sires. Dairyman here is a monthly dairy sale where you can purchase high producing AI Sire cattle at fair market prices.

We have a real demand for dairy cattle and reasonable commission rates! Call now to consign your cattle along with records and pedigrees so they can be properly advertised for our Oct. 2. Sale and every list Friday evening of the following months.

CALL (717) 263-5702

FREE Ice Cream - Come spend the evening with your friends - the dairy cattlemen!

AUCTIONEER-J. Rodger Wildeson
AU1012-L
Phone: (717) 263-5702