

## 200-300 HEAD SPECIAL HORSE SALE WORK HORSES & DRIVING HORSES

FRIDAY EVE., SEPT. 11, 1987

AT NEW HOLLAND  
SALES STABLES, INC.

12 Miles East of Lancaster, Pa.  
just off Rt. 23,  
New Holland, Pa.

Tack 6:00 P.M.  
Sale 7:00 P.M.



Horses Hitched  
at 12 Noon

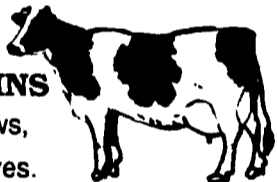
- \* 1 Load Work Horses and Driving Horses consigned by Ward Wright.
- \* 1 Load Driving Horses consigned by Bud Leonard.
- \* 1 Load Driving Horses consigned by Clayton Waterbury.
- \* 1 Load Driving Horses consigned by Jonas Beiler
- \* 1 Load Driving Horses consigned by Reuben G. Stoltzfus
- \* 1 Load Driving Horses consigned by Elam B. Stoltzfus.
- \* 7 Driving Horses From Iowa
- \* 4 Year Old Morgan, 2 Year Old Morgan, (2) 3 Year Old Saddlebreds, (3) Standardbreds.

Plus many more consignments by sale time.  
For more information contact:  
Abe Diffenbach, Mgr. Norman Kolb  
717-354-4341 717-397-5538

## COMPLETE DISPERSAL

SAT., SEPT. 5 - 11:30 AM  
On the Windham to Athens Road about  
halfway between. Formerly Johnson  
Farm. Bradford Co., Pa.

46 HOLSTEINS  
44 Mature Cows,  
2 Started Calves.



Many due Sept. & Oct., more on thru the fall  
to freshen. Many have freshened in the last  
6-7 weeks. Milking many 1st & 2nd calf  
hfrs. Vet examined & interstate charts.

### MACHINERY 4 JD TRACTORS

JD 4010 W/F Diesel Tractor, Good Rubber;  
JD 4020 W/F Tractor, Very Good Rubber;  
JD 3020 W/F Gas (Needs An Engine); JD  
70 W/F Gas V. Good Rubber. All Tractors  
Manual Shift. NH #269 Baler & Thrower;  
NH #55 Rake; NH Blower, PTO; Oliver 4  
Bottom Plow; NI Tandem Axle Spreader  
with Hydraulic Gate; JD Transport Disc;  
12'x16' Harrows; Mulkey Bale & Grain Ele-  
vator; Gehl #600 Chopper with PU & 2 Row  
Heads; Gehl on 10 Ton Wagon; Lamco  
Forage Box on 10 Ton Wagon, 3 Beaters &  
Roof; 1 Bale Box (Steel Floor) and Wagon;  
Wood Trailer; Lime Sower; 15.9x38  
Chains.

### MISC.

Big Floor Fan on Wheels, Agway Fencer, 3  
Feed Carts, 2 Gates, Ton Fertilizer, Etc.,  
Etc.

### PRODUCE

Approx. 5000 Bales Hay, About 1000  
Bales 2nd Cut Alfalfa Now, Should Be 2000  
By Sale Time. Really Nice! 1st Cutting To  
Sell In 1 Lot. 2nd Cutting To Sell In 1 Lot.  
Approx. 80 Acres Standing Corn To Sell In  
7-8 Lots. Some Of This Corn Well Eared  
And Getting Mature. If Going Early To  
Inspect, Be Sure To See It All.

Owner- TIM WATKINS

TERMS - CASH OR GOOD CHECK.

Jim Adriance, Auctioneer  
AU4L  
Montrose, Pa. 717-278-1574

## Dairy and Livestock Sales

SAT SEPT 26 - 9AM Hos-  
tetter's Livestock Hauling  
Eq & Tools, Antiques, HH,  
For Melvin Hostetter, 1530  
Manheim Pike, Lancaster,  
PA At Rt 72 Exit, N of Rt  
283 J H David & R M Vito,  
Aucts

## PUBLIC SALE JUNIATA CO. COUNTRY DWELLING FRIDAY EVE., SEPT. 25 7:00 P.M.

Located central Juniata Co., near Port  
Royal, Pa.

2 sty, 3 bdrm. dwelling on 3.7 acres. Beauti-  
ful, quiet country setting w/deer crossing seen  
from property.

For info or brochure w/picture, contact:

Long's Auction Service  
R.D.1, Port Royal, Pa.  
Ph. 717-527-4458 or 2405  
AU 001702 L

## SPECIAL HY-GRADE HOLSTEIN AUCTION

Hull-O-Farm

Since 1779-Over 6 Generations  
20 miles northwest of Catskill, 16 miles  
southeast of Middleburg. Arrows will be  
posted from Route 145 to the farm in  
Durham, New York.

Saturday, September 5, 1987

10:30 a.m. RAIN OR SHINE 10:30 a.m.  
135± HY-GRADE HOLSTEIN COWS  
and OPEN HEIFERS

No commercial protein fed. All cattle home  
raised out of Elevation and other quality  
sires. Most calfhood vaccinated, inocu-  
lated and pregnancy checked.

Terms of Sale: Cash or good check day  
of sale. New buyers must have a bank  
letter.

Sale by Order of  
Hull-O Farm  
Frank & Sherry Hull  
Austin & Ethel Hull  
Owners



D. LUTHER  
Auctioneer-Sales Manager  
Amenia, New York 12501  
914-373-9900/8215

NYS Toll Free 1-800-D. LUTHER  
USA Toll Free 1-800-372-0099

## TOP-OF-THE-RIDGE FARM MILKING HERD AND BRED HEIFER SALE THURSDAY, OCT. 8

-11:00 A.M.

70 HOLSTEINS- 67 Cows- 3 Bred Heifers  
66 Registered- 4 Grades  
1986 DHIR Lac. Avg.- 18,110 3.8 683

### Selling:

2 EXCELLENT- 20 VERY GOOD- 20 GOOD PLUS  
24 First-Calf Heifers- 11 Fresh Aug. & Sept.  
18 Sell From 22,000M to 26,311M  
25 Sell From 700F to 1056F  
40 Sell From VG or EX Dams

Farm located in Hunderdon Co., New  
Jersey, approx. ½ mile east of Ringoes  
and 6 miles south of Flemington on Co.  
Rd. 514.

OWNERS

FLOYD AND MARIE SCHWAB  
Route 1, Box 279  
Ringoes, NJ 08551  
Ph. 201-782-7317

SALE MANAGER  
REMSBURG SALE SERVICE  
P.O. Box 177  
Jefferson, MD 21755  
Ph. 301-473-8214

REMSBURG

Sale Service

## ADVANCE NOTICE RON-LIN FARMS DISPERSAL

FRIDAY, SEPT. 11, 1987  
At 11 A.M.

Located 2½ miles off I-81, exit 67 at  
New Milford, PA Farm is on Rt. 429.

145 REGISTERED HOLSTEINS 145  
IH 1086 & FORD 7700 TRACTORS  
COMPLETE LINE OF MODERN  
MACHINERY  
1 P.M. 150 Acre Farm To Be  
Sold At Auction

If not sold before, subject to confirmation.  
112 ties on pipeline, 50 heifer barn plus free  
stall heifer barn, 40x100 machine shed, all barn  
equipment including 1400 gal. tanks to stay  
with farm, 3 silos, excellent 5 BR ranch home  
with inground pool.

Call auctioneers for appt. to inspect.

Owners:

RONALD & LINDA KAYS

Watch next week for complete listing

Auctioneers:

Jim Adriance, AU4L

Montrose, PA 717-278-1574

and Mel Manasse, AU571L

Whitney Point, N.Y. 607-692-4540

SAT SEPT 26 - 10AM Fall  
Heifer Sale at New Holland  
Sales Stables, Inc., New  
Holland, PA

SAT SEPT 26 - 10AM  
Antiques, Furniture, China,  
Gun, etc 13 mis N of Get-  
tysburg on business Rt 15  
to York Springs, thence  
turning W onto Rt 94 in  
borough 2 blocks at 232 W  
Main St., Adams Co., PA  
R.L. Pittenturf, Owner Clair  
R Slaybaugh, Auct

SAT SEPT 26 - 2PM Les-  
ter T and Kathryn Good,  
730 Flintstone Rd., Clay  
Township, Ephrata, PA 59  
Acre limestone hog farm  
Paul E Martin, John D  
Stauffer, Auctioneers

MON SEPT 28 - Annual  
Fall Auction for Capital  
Tractor of Troy, NY By  
Goodrich Auct Serv., Inc

MON SEPT 28 - 61 Acre  
Limestone Farm and Farm  
Mach Located along  
Indiantown Road, West  
Cocalico Twp Abram W  
Eberly Estate Paul E Mar-  
tin & John D Stauffer,  
Aucts

TUES SEPT 29 - Franklin  
Co Holstein Breeders Sale  
at Fairgrounds located 7  
mis SW of Chambersburg,  
PA, along Rt 995 Ralph W  
Horst, Sale Mgr

## ELDA-CHROSS FARM PRODUCTION SALE

MONDAY, SEPTEMBER 7, 1987  
11:00 A.M.

(Lunch will be served)

Located in Bedford Co., 1½ miles North East of Woodbury,  
Pa., off route 36 on Hickory Bottom Road (watch for sale  
signs).



### SELLING 50 DAIRY CATTLE

45 Holstein Milking Animals Sell  
(Over ½ Registered -

Balance Top Grades) 6 Registered Jerseys!

All Animals selling are in full flow of Milk - Recently fresh or spr-  
ing close! Approx. ¼ Selling are milking with 1st-Calf;  
Balance are 2nd & 3rd Calf.

Sires Include - Sexation, Pete, Cavalier, Wiseman, Mars  
Tony, Superior, Burket Falls Grandee, Plushanski Butter-  
fat and More.

A Few Features include -

A Fancy Sexation - Fresh with 1st-Calf; Dam & Granddam both  
over 20,000m.

2 Astronaut Granddaughters - both scored Very Good - both just  
fresh and milking 80 lbs. Both test 4% - You will like this  
Pair!

An 84 pt. Le-Del Ideal Superior with 18,000 as a 3 yr. old - due  
shortly after sale to Board Chairman.

A dozen Heifers either recently fresh or springing close.  
A Service-Age Bull - Sired by Gold - Dam by Pete with 24,000 and  
950f (+1006 Cow Index); 2nd Dam 87 pts. with 29,000m  
1100f; Next 6 Generations ALL EX or VG.

A Red/White Service-Age Registered Bull by Hi-De-Ho Sunset  
Kid-Red.

5 Registered Jerseys Sell - 3 Milking and 2 Heifers - 2 Sired by  
Top Brass - Good Records and High Test!

Auctioneer's Note - Reason for Sale - To reduce the workload on  
the farm to a more manageable level. Elda-Chross cattle have  
created satisfied customers wherever they have gone. This is a  
real nice Group of Young Cattle selling with exceptional udders.  
Elda-Chross Farms have shown numerous Grand Champions  
at Local Dairy Shows and placed First at both District and State  
Shows all with homebred animals from homebred Bulls. If you  
want or need milk for quota, Labor Day, 1987, at Elda-Chross  
Farm Production Sale is Your Golden Opportunity!

Rolling Herd Average on 165 Head is 17247m 3.90 675f (Cattle  
selling are a cross-section of the Herd.) 30 Day Test - All preg.  
Checked - Contact Owners or Sale Mgrs. for Catalog.

Owners -

CHARLES & ROSS HERSHBERGER

R.D. 1, Box 147, Martinsburg, PA

(814) 793-2583

Sale Managed By -  
KLING'S AUCTION SERVICE  
Landisburg, Pa. Lic. #500  
(717) 789-3883



Oren Bender & Ross Hershberger, Pedigrees