

Dairy and Livestock Sales

SAT SEPT 19 - 9:30AM
Antiques, Collectibles, HH, Farm Eq & Tools 1st farm on Maplewood Dr, N of the Barry Elementary School in Deep Creek Valley, 4 mis SW of Lavelle, 8 mis NE of Hegins between Rt 901 and Rt 125 Estate of Luther V Wedde Mike & George Deibert, Aucts

SAT SEPT 19 - 10AM
Farm Machinery, Antiques & Collectibles, Car & Truck, Guns, Musical Instruments, HH Approx 7 mis E of Millersburg or 3 mis W of Berksburg along Rt 25, in village of Curtin Turn S onto Matterstown Rd then W on Troup Rd Loretta A Troup, Owner David D Deibler & Edwin Shoop, Aucts

SAT SEPT 19 - 12:30PM
The Pride of York Co All Breed Sale York Fairgrounds, Swine Barn Show Ring In conjunction with York Interstate Fair and in cooperating with York Co Pork Producers

SAT SEPT 19 - 1PM Real Estate from John E Bare Estate along the Stoverstown Rd Between York

New Salem and Stoverstown, York Co, PA North Codorus Twp Charles L Wehrly, Auct

SAT AUG 22 - 10:30AM
Auto Repair Eq Clarence Naabe, HiWay Garage, Rt 40, Elmer, NJ Bob Brooks, Auct

TUES SEPT 22 - 5PM
Real Estate Estate of Harry A Kreiser RD2, Jones-town, PA From I-81 take

72N turn left onto 443 then look for signs Michael R Fortna, CAI Auct

THURS SEPT 24 - 9AM
Antiques, HH, Tools, Car 3600 Marietta Ave (Rt 23), corner of Summit Drive & Marietta Ave, Silver Spring, Lanc Co, PA By Edith Divet T Glenn & Timothy G Horst, Aucts

FRI SEPT 25 - Landisburg, PA, Complete Dairy

Herd Dispersal Jan Dobbis, Owner Kling's Auct Serv, Sale Mgrs

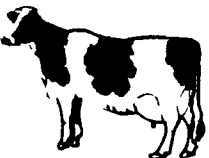
FRI SEPT 25 - 7PM Junia-ta Co Country Dwelling Central Juniata Co, near Port Royal, PA Long's Auct Serv

SAT SEPT 26 - Henkels & McCoy, Strinestown, PA Construction & Line Equip-ment Vilsmeier Auction Co, Inc

SAT SEPT 26 - Fraley's Fall Consignment Machinery Sale, 3 mis E of Muncy, PA, Lycoming Co Fraley Auct Co

SAT SEPT 26 - 9AM Real Estate, Farm Items, Auto-moblie, Personal Property 229 North Main St., Jacobus, PA, In York Co The Harry D Leader Estate Brian L & Jacob A Gilbert, Aucts

GREGORY DAIRY DISPERSAL



THURSDAY, SEPTEMBER 3rd, 1987
AT 11:30 A.M.

At Jim Adriance Farm, Turn Off Rt.#706 Just East Of Montrose, Pa. (Above Ames Store), **Follow Arrows!** Susq. Co.

40 Reg. & Hi Grade Holsteins

33 Are Mature Cows & 6 Bred Hfns., 16 Reg. Cows. A Sea Gem Fresh Aug. 6th, A Birch Hollow Royalty Fresh Aug. 5, Willitta Citation R Fresh July 15th. A Roy Brook Temptation And A Birch Hollow Royalty Both Bred To Astronaut, A Lake Louise Star Chief Due Sept. 15. Also An Emma Dean Star Bright Due In Jan. 9 Cows Fresh In Last 40 Days, More Right Ready To Freshen. Many Cows & The Heifer's Due Sept. Thru Jan. Some Really Outstanding Individuals. All CalfhooD Vaccinated And A.I. Bred & Sired. A Young, Good Milking Dairy With Type & Condition That Freshen Year Around. Vet Examined. Interstate Charts. Note-Labor Shortage The Reason For This Auction.

Terms- Cash Or Good Check

Owners-

ROBERT & DONALD GREGORY
R.D.#2, Dallas, Pa.

Jim Adriance Auctioneer AU4L
Montrose, Pa. 717-278-1574

PUBLIC SALE

WOOD-ANN FARM
COMPLETE DAIRY DISPERSAL

Friday, September 11, 1987- 11:00 A.M. Sharp!
Located in Union County, Pa., 6 miles West of Lewisburg, off Route 192 at Buffalo Crossroads, north 1 mile to the Farm (Mazepa)

50 HEAD OF HOLSTEINS 50
30 Registered Animals - 20 I.D. Grades

Herd Consists of 30 Milking and Mature Animals, 10 Heifers bred for late Fall, 10 Yearlings and Calves.

5 Recently fresh, 7 due for September and October, Balance of Herd in Different Stages of Lactation.

This Dairy is 100% CalfhooD Vaccinated - Certified & Accredited.

Free-Stall Broke and Milked in Tie Stalls.

D.H.I.A. Rolling Herd Average - 18,464 3.90 718f.
Selling Animals with records over 25,000m and 800f.

Featuring—

A Fancy 2 yr. old Citamatt projected at 18,500 of 3.90 milk-over 700f. Sells with her Heifer Calf by Reckers Ace- Bred to RORAE and due in October.

Citamatt's Dam by Persuader also sells with over 19,000 or 4% milk. 2nd Dam by Coldsprings Style Master Wizard with 25,000 and 1000f. (This is a Large Family with many more great individuals selling)

5 Sell sired by Astronaut; 2 by Mandingo; Others by Jet Stream, East Star, Bell, Very, Boot-Nick, Trump, Job, Persuader and Others.

Service Sires include—

Mandingo-4; Memorial-2; Valor-3; RORAE, Stewart and others.

Auctioneer's Note— This is a good, young Dairy selling. Lots of Potential— The Kind that anyone would like! Don't Miss this Sale for Your Fall Replacements. V. Art Kling.

Sale By:

WOOD-ANN FARM, INC.,

Owner

717 524-4505/717 966-9441



R.D. 1, Landisburg, PA 17040
tel. (717) 789-3883
License No. AU-000500-E



A Great 93 ACRE Lancaster County Limestone Farm

Penn Township

PUBLIC AUCTION

SATURDAY, SEPTEMBER 5, 1987 10:00 A.M.

Small Items and Farm Machinery

11:00 A.M. — Real Estate

12:00 noon — Standing Corn and Crops

Located at 695 West Lexington Road, Lititz, Pa.

From Lancaster, Pa. Take Route 501 North To Lititz To West Lincoln Ave. (Last Traffic Signal On 501). Turn Left And Continue Approx. 2 1/2 Miles To Lexington Road (At Erb's Mennonite Church) Continue To Auction Site.

93 ACRES Of Limestone Land, In A High State Of Cultivation With Approximately 1/2 Mile Road Frontage.

OPEN HOUSE DATES

Sat. Aug. 1,8 1-3

Or Call For Appointment

717-626-7076 Or 717-626-1383

"Real Estate Features"

Large Frame Bank Barn; 3 Drive-In Mows; 140 Head Steer Operation; Approximately 2 Acres Tobacco Hanging Area; Silos; 20'x80' Star Concrete Silo w/Feed Easy Unloader w/70' Bunk Feeder w/Roof; 13'x50' Stave Silo; 10'x50' Tile Silo; Large 2 1/2 Story Brick Farm House Converted Into 2 Apartments w/ Large Open Porches, Basement And Attic.

Side #1: 4 Bedrooms, Modern Kitchen, Full Bath, Spiral Stair Case, Family And Living Rooms, Enclosed Laundry Porch Area, Separate Oil Heat, Some Rooms w/Wall To Wall Carpet.

Side #2: 2 Bedrooms, Modern Kitchen w/Laundry Area, Full Bath, Living And Dining Rooms, Separate Oil Heating, Large Connected Wash House For Storage Area.

*Summer House

Newly Remodeled. Full Bath, Modern Kitchen w/Carpeted Family Room, Electric Heat And Wood Stove, 1 Bedroom, Wall To Wall Carpet.

*The White House

2 1/2 Story Frame Dwelling w/Frame, 1 Car Garage, 3 Bedrooms, Full Bath, Kitchen w/Cabinets, Living and Dining and Parlor Rooms, Enclosed Sun Porch, Basement And Attic, Oil Heat, House Neatly & Well Built, Nicely Decorated.

*Large Frame Tobacco Barn

w/Approximately 4 Acre Hanging Capacity With Damp Cellar And Stripping Area.

*Large Frame Drive Through

Corn Barn

3 Bay Frame Garage

2 Bay Frame Garage

2 Story Frame Chicken House

*Hog Operation

Approximately 30'x190' Fattening Hog House w/Capacity For 600 Hogs, Automatic-Feeding System w/12 & 8-Ton Feed Bins, Farrowing House Being "L" Shaped, Each Wing Measuring Approximately 40'x80' Capacity, 120-140 Sows, Complete w/Gestation, Farrowing, Nursery Areas, w/3 To 5 Ton Reed Feed Bins.

Terms: 10% Down- Day Of Auction Balance- By January 15, 1988.

"OWNER WILL FINANCE TO QUALIFIED BUYERS"

All Buyers Interested In Financing Must Contact Auction Firm 10 Days Prior To Auction Date.

"Financing By Seller"

10% Down- Day Of Auction. Additional 15% Down At Settlement On Or Before January 15, 1988.

For A Period Of 10 Years

Interest Rate For The First 4 Years Shall Be At 8% %. After That Interest Shall Be Negotiable.

Buyer Is Required To Pay 1/10 Of Remaining Balance Plus Interest Quarterly Each Year.

*Auction Is Subject To Existing Lease And Rights Regarding The Summer House, The White House And Hog Operating Houses.

For Information Regarding Lease And rights, Call Auction Firm.

Auction At 12:00 Noon Crops And Standing Corn

Lot #1 Approx. 22 Acres Standing Corn; #3378, #3320 Pioneer; #M-F-8 Silo King In Front Of Brick House, Along Lexington Road.

Lot #2 Approx. 10 Acres Standing Corn; #3378 Pioneer; West Of Brick House.

Lot #3 Approx. 5 Acres Standing Corn; #HT 650-A Sanford Seed; West of Hog House.

Lot #4 Approx. 24 Acres Standing Corn; #3358 and 3352 Pioneer; East of White House, Along Lexington Road.

Lot #5 Approx. 15 Acres Late Standing Corn; #3475 Pioneer; Directly Behind Brick House.

Lot #6 Approx. 15-20 Ton Ear Corn.

Lot #7 Approx. 25-30 Ton Straw.

Lot #8 Approx. 150 Ton Corn Silage.

FARM MACHINERY

Auction at 10:00

#2- 65 White Diesel Farm Tractor With 587 Hours, Good Rubber; Farmall Super MTA Gas Tractor, Good Rubber; #2-88 White Diesel Farm Tractor With 1161 Hours, Good Rubber; #550 Oliver Gas Tractor With Hydraulic Loader; 1979 Chevy #10, Scottsdale Pickup Truck With 47,785 Miles, AM/FM Radio, Automatic, Heater; #548 Oliver 4 Bottom 3 Point Hitch Snapper Blade; #519 New Holland Manure Spreader; #252 Oliver Transport Disk; Oliver 10' Disk; #99 Gehl Silage Blower; 5 Wheel Farmhand Hay Rake; (2) 16' Arts-Way Silage Wagons (Like New); (2) Farm Wagons; 24' New Holland Bale Elevator; #718 New Holland 2 Row Corn Harvester; #311 New Holland Baler (Like New); #312 Oliver 2 Row Corn Planter 3 Pt.; Century 3 Pt. Sprayer; Grain Drill; Bunk Type Feeder Wagon; Ford 3 Pt. Hoke; Cultivator; Extension Cords; Scorer; Wiard Walking Plow; Oliver Sickle Bar Mower; *Like New- Portable Kato Light Generator 120/240, KVA 25, Amp. Per Term 104; Feed Cart; Platform Scales; Air Compressor; Triple, Double, Single Trees; (2) Wheel Barrows; (10) Bales of Baler Twine; Ox Yoke; Bag Wagon; One Horse Sleigh Made By Snavey And Son, Manheim, Pa., Good Condition; Bob Sleigh; Florin Pot Belly Stove; Wagon Wheels; Tobacco Hoers; Tobacco Shears; Old Bath Tubs; Milk Cans; Meat Bench; Apple Butter Stirrer; Scalding Trough; Spring Wagon Seat; Walnut Logs; Lumber; Farm Related Tools; Bicycles; Chicken Feeders And Nests; Many Other Items.

Terms: Cash or Approved Check

Auction Conducted By The
J. Omar Landis Auction Service
Jay M. Witman AU001127-L
Apple & Roberts Streets, Box 501
Ephrata, Pa. 17522
(717) 627-0789 or 665-5735

Auction For
ABRAM K. LONGENECKER
717-626-7076
GLENN S. LONGENECKER
717-626-1383

Food By:
Manheim Christian Day School