

**Public Auction Register**

Closing Date - Monday, 5 00 P M  
of each week's publication

SAT SEPT 5 10AM 93 Acre Lanc Co Limestone Farm, Penn Twp Small Items, Farm Mach 695 W Lexington Rd., Lititz, PA For Abram K & Glenn S Longenecker J Omar Landis Auct Serv Jay M Witman

SAT SEPT 5 - 10 30AM Antique Engine & Tractor Auction, Wolfsville Ruritan Community Park, Wolfsville, MD Take Myersville Exit 42 off I-70, 7 mis N of Myersville, MD, on Rt 17 N to Wolfsville, MD Annabelle L Martin, Owner Robert C Mulendore, Auct

SAT SEPT 5 - 10 30AM Hy-Grade Holstein Auction, 20 mis NW of Catskill, 16 mis SE of Middleburg Hull-O Farm, Frank & Sherry Hull, Austin & Ethel Hull, Owners D Luther, Auct

MON SEPT 7 RD 1, Martinsburg, PA 50 Head Reg

& Grade Holsteins (all fresh or springing close) Charles & Ross Hershberger, Owners Kling's Auct Serv, Sale Mgrs

MON SEPT 7 - 8AM Antiques & Collectibles Farmersville Auction in Farmersville, 3 mis E of Brownstown, Lanc Co., PA Larry Rutt, Auct

MON SEPT 7 - 9AM Consignment Sale of Tractors & Eq From I-81 S of Martinsburg, WV, take exit #5 (Inwood), WV, Rt 51 E approx 3 1/2 mis to Shutts Cash Grocery (Formerly Haines'), turn right, 2 of mile to sale Edgar A Bohrer, Sale Mgr

MON SEPT 7 - 9AM Real Estate & Antiques of Jennie A Plank 302 N Main St (Rt 94), York Springs, Adams Co., PA Just off Rt 15 Clair R Slaybaugh,

Auct. Avenue, RD1, Ephrata, Lanc Co., PA, near the Turkey Farm By Everett Reich H H Leid Auct Serv

**Selling at  
New Holland Sales Stables  
FRIDAY, SEPTEMBER 11, 1987**



Pair Belgian mares, complete harness, authentic Gruber wagon. Also car trailer w/hand winch & draft horse cart.

**SPAHR'S AUCTION**

**LABOR DAY, MONDAY, SEPT. 7, 1987  
TIME: 9:00 A.M.**

From Cathy Shelly, R.D. 4 Carlisle; Ross Gardner, Lewisberry R.D. and Neville Rd., removed to 44 N. Bedford St., Carlisle, PA, directly behind the old jail. Mostly fine antiques sold without reserve.

**2 TALL CASE CLOCKS - GUNS - MUSIC BOXES  
BASS VIOLIN SOLD AT 12:00 NOON**

Jacob Gorgas walnut tall case clock with broken arch top, rosettes, quarter columns and OG feet, 8'3" H; German chime clock; mahogany tall case clock with moon dial and semi-carved case, 8'2" H; all in running condition; 2 cylinder music boxes in 25" and 16" cases; concert roller organ with 74 rolls. **HANDGUNS:** Old percussion 31 cal. signed Sam Colt #300709; Colt 38 Special with holster; Colt 32 cal. auto., #507158; Hi Standard Supermatic 22, #9569; 25 cal. auto. model 1921 Defender, #1439; 32 cal. U.S. revolver, #68876; 32 model American Bull Dog. **RIFLES AND SHOTGUNS:** 30-06 with scope; 22 bolt action with Weaver scope; Savage 250-3000, #2704; Mossberg 20 gauge; L.C. Smith double barrel; Winchester single shot 22 model 67; old 10 gauge with ammo and cleaning tools.

**FURNITURE SOLD THROUGHOUT SALE**

Walnut Chippendale desk with 4 lip drawers, dovetailed case, bracket feet, fine interior, 29" to writing board; early pine Dutch cup. w/glass doors, spoonslots, 3 drawer base & dovetailed feet; hutch table; candle box; pair cherry banquet tables with rope twist legs and tiger maple apron; **Henry Miller baby grand piano;** small cherry dutch cupboard with heavy raised panel door, 3 drawers in base, quarter columns, dovetailed top and bottom with OG feet (some restoration); pine chest-on-chest; 1920's mahogany comb back Windsor arm chair; needlepoint fireplace screen; one drawer stand with towel bars; mahogany lady's desk; oak washstand; 2 fine blanket chests, one small with milk red under paint and strap hinges; fine small cherry Sheraton plank end chest with original oval brass; flat top pine desk with 3 drawers; small dovetailed box with drawer; mahogany sewing stand; muffin stands; child's chairs; child's iron stove; old wagon; large Victorian walnut tilt top table; oak commode; plank and Victorian chairs; Victorian walnut bedroom suite; mahogany stand; spool stand; gun case; platform rocker; Victorian walnut highchair; Windsor chair; cherry dropleaf table; marble top stand.

**COLLECTIBLES**

Collection of old tools; matching pair of coverlets, signed Seifert Mechbg., Pa.; 4 quilts; old games; bisque figurines; sterling, silver plate; soft paste including King's Rose cup and saucer; 4 antique bisque and porcelain dolls in original clothes and boxes; coffee grinders; old pictures and frames; kerosene lights; candle mold and snuffers; old ladles, some brass; flat irons; early Christmas ornaments; Roseville; pressed, pattern, cut, opalescent, carnival glass; pewter; 6 early silver teaspoons signed L. Boehn; Majolica; butter churn with old blue paint; OG mirror; Godey's Fashions 1865; walnut frames; Carrier & Ives ("The Sailor's Adieu") in original frame; old photos and lithos; old money boxes; iron trivets; scales; sugar bucket; crock; iron bank with original paint; large graduated sleigh bells, WWI flare gun; helmet, shell belt, compass, canteen; top hat; Planter peanut jar; Oriental items; cookie cutters; basket; linens; Sheridan mirror, hooked rug; 2 old brass telephones; paper dolls; candle holder, Victorian hanging shelves; coachman's horn; iron stove; wash bowl and pitcher set; mocha cup; old wind up papier mache rabbit, paisley shawls; old hand blown bottles, one Union; hand blown glass; large selection of stippled rosette pattern glass, etc.

**TERMS: Cash. Personal checks accepted from persons known to me.**

**EXCELLENT SALE.**

**No children.**

**PREVIEW: Sunday, September 6, 1:00 to 3:00 p.m.**

**CHARLES SPAHR, AUCTIONEER  
AU-001775-L  
Phone: 243-5010**

**PUBLIC AUCTION**



**Val. Household Goods, Antiques, Collectors Items, Tools, Etc.**

(Owner sold property - makes sale necessary). 1 1/2 miles W of Montgomery, Pa. along Rt. 54 near Mowery's Farm.

**SATURDAY, SEPT. 5, 1987  
10 A.M.**

**Brief listing follows:**

Lovely 2 pc. popular blind door corner cupboard; Pine 2 pc. wall cupboard w/ dropleaf desk; 5 leg dropleaf table; 1 drawer stand; 3 pc. victorian parlor suite; 2 solid end fruit cupboards; hutch table base; crocks; jars; 6 matching arrow back chairs; other chairs; etc. etc. 4 pocket watches; **Service for 12 Nortake dishes w/extras;** GE 2 door refrig; GE 30" elec. stove; 18 cu. ft. chest freezer; 2-5 pc. bedroom suites; Philco colored TV; Conn double keyboard elec. organ- loaded; Burini accordian; electrolux & compact sweepers; other small items; glassware - dishes; pots - pans; lots more. **TOOLS:** Alum Craft 14' alum V bottom boat and trailer; Johnson 9.5 hp outboard motor; MinnKota 55 elec. boat motor; 6" jointer; 10" table saw; 36" wood lathe - 12" swing; lathe tools; router; Agway 220V 2 hp port. air compressor; battery charger; Echo 351V & Homelite chainsaws; stanly mitre saw; skilsaw; belt sanders; sabre saw; elec. drills; Sears paint gun; hyd jack; many other small tool items; etc. lots more.

**TERMS: CASH.**

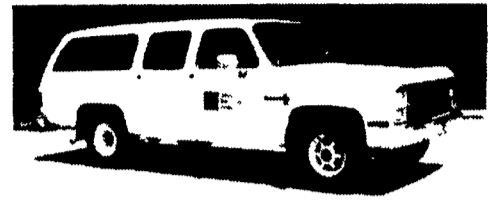
**Owner, ROBERT LOWE  
Conducted by  
FRALEY AUCTION CO.  
546-6907 AU1194L**

**Lunch - Tent**

**ABSOLUTE AUCTION**

**UNITED TELEPHONE & BELL TELEPHONE**

**SAT., SEPT. 12 - 9:30 A.M.  
CARLISLE, PA**



- (18) '83 - '81 Chev. Chevettes, 4 cyl., 4 spd.;
- (12) '82 - '80 Chev. Citations, 6 cyl., auto., w/a/c;
- (2) '80 - '79 Chev. Malibus, 6 cyl., auto.;
- (5) '80 - '79 Ford Fairmonts, 6 cyl., auto.;
- '84 Chev. C20 Suburban, 6.2 litre dsl., auto., w/a/c, AM/FM, cruise, p/w, p/l;
- '82 Chev. C20 Pickup, 8 cyl., 4 spd.;
- (9) '82 Chev. S10 Pickups, 6 cyl., 4 spd., w/service caps;
- (10) '81 - '80 Chev. Luv Pickups, 4 cyl., 4 spd., some w/service caps;
- (22) '80 - '77 Chev. Display Vans, 8 & 6 cyl., auto. & 3 spd.;
- (4) Pitman Hyd. Digger Dericks;
- (14) Telsta, Versalift, & UEC Bucket Trucks;
- (2) '85 - '84 Chev. Hi Cube Vans;
- (2) '79 Ford Cab & Chassis;
- (20) '79 - '77 Chev. Cab & Chassis.

**EVERYTHING SELLS AS-IS WHERE-IS TO THE HIGHEST BIDDER.**

**At United Telephone's facility at 1430 Trindle Rd. in Carlisle, PA. TERMS: COMPLETE PAYMENT SALE DAY IN CASH OR GUARANTEED ONLY WITH \$200 CASH REQUIRED AFTER FIRST ITEM PURCHASED AND \$100 CASH REQUIRED AFTER EACH ITEM PURCHASED THEREAFTER.**

**Vilsmeler Auction Co.  
PA Auctioneer Lic. No.: AY-000958-L  
For More Info., Call (215) 699-5833,  
Vilsmeler Auction Co., Inc.,  
Rt. 309, Montgomeryville, PA 18936. (87U057)**

**AUCTION  
CARRIAGES, SLEIGHS, TACK  
PRIMITIVE FARM EQUIPMENT  
HORSE RELATED ITEMS**



**FOR: JACOB MOYER  
AT: Alderfer Auction Center, 501 Fairgrounds Rd., Hatfield, PA (2 miles from Lansdale Exit of PA Turnpike NE Ext.)**

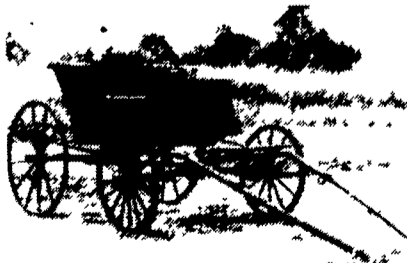
**TUESDAY, SEPTEMBER 8, 1987 6:00 P.M.**

**CARRIAGE & SLEIGHS - Doctors Carriage, wicker pony Pheaton on Rubber; Pony Farm Wagon (orig. paint), goat cart (ready for your living room), farm wagon, 4 passenger sleigh, Groton Carriage Co., Groton, NY; 2 passenger sleigh on springs, excellent condition.**

**FARM EQUIPMENT - Running gears for hay wagon, sm. brass walking plow; Leroy wooden beam plow; early 1-row corn planters (orig. decoration); early cultivators, straw & fodder cutters, wooden wheels, carriage lamps, buggy jacks.**

**TACK - 2 sets of new horse & pony harness, saddles, lines, sleigh bells, misc. saddle rack, harness hooks, buckets, show equipment & show boxes, blankets.**

**DECORATIVE ITEMS - Round lamp w/work hames base, collars w/mirrors, cement horse hoof, wooden horse head w/harness, various single & dbl. trees, early farm tools.**



**TERMS -  
CASH  
LUNCH  
SANFORD  
ALDERFER  
AUCTION  
CENTER**



**SANFORD  
ALDERFER AUCTION COMPANY**

501 Fairgrounds Road • Hatfield, PA • (215) 368-5477

Box 1 • Harleysville, PA • (215) 723-1171

PA NO. AU-001117-L