

Deutz Air-Cooled Diesel Engines

Deutz diesel engines cooled by a direct air flow offer the maximum in fuel economy, low maintenance and compactness, says J.R. "Russ" Green, tractor marketing manager.

State-of-the-art Deutz air-cooled diesel engines match the power output of larger, less fuel-efficient liquid-cooled engines while maintaining good horsepower-to-weight ratio. Unit cylinder design permits the quick removal and replacement of individual cylinders, Green says. Most parts are completely interchangeable within engine series.

able within engine series.

Deutz air-cooled engines are an exclusive feature of Deutz-Allis tractors and combines. The new Deutz-Allis tractor lines equipped with air-cooled engines include the 6200 series, ranging from 43 to 73 PTO hp., and the 7100 Series, from 85 to 145 PTO hp. R-Series rotary Gleaner combines, now ranging from the 190-hp. R50 to the 270-hp. R70, also rely on air-cooled diesel engines.

Direct air cooling eliminates a major source of equipment break-

down: liquid cooling hardware such as radiators, water pumps and hoses. Cooling system maintenance usually consists of little more than checking fan belt tension, Green says.

In addition to exceptional reliability, air-cooled diesel engines are characterized by long service life. This is because air-cooled engines reach operating temperature much faster than liquid-cooled engines. Most engine wear occurs during startup, so shortening this critical period extends engine life.



Air-cooled engines typically use 20 percent less diesel fuel than liquid-cooled engines. Direct fuel injection ensures smooth, quiet operation and improves fuel efficiency as well. Aerodynamic intake ports in Deutz engines impart a swirling motion to incoming air, so it mixes thoroughly with fuel in the combustion chamber. Fuel is injected through four-hole nozzles to promote mixing and complete combustion.

Before shipping, every Deutz engine is rigorously tested under extreme conditions, Green adds. This means there's always ample reserves of power for actual field use.

Klockner-Humboldt-Deutz, parent company of Deutz-Allis, manufactures more than 200,000 air-cooled diesel engines each year, ranging from 4 to 525 horsepower. Deutz engines power trenching machines, industrial forklift trucks, soil compaction equipment, portable air compressors, water pumps and other machinery used in the marine, mining, transportation, manufacturing and construction industries, Green says. A special transporter built to carry the U.S. space shuttle from its maintenance and testing facility to the launch pad at Vandenberg Air Force Base, Calif., is driven by a Deutz V-12 engine.

New Case IH Drill

(Continued from Page D6)

limeter) adjustable depth/press wheels control seeding depth and firm the soil over the seed for fast, uniform plant emergence.

Additionally, the toolbar frame is divided into three 10-foot (3.1 meter) sections. The frame wing sections flex in excess of 20 degrees above or 10 degrees below horizontal to assure proper seed placement on uneven terrain.

Convenience Features

Other time and labor saving features designed into the Model 8600 air disk drill include:

- easy transportability as the unit folds hydraulically to a transport width of 14 feet 1 inch (4.3 meters), narrow enough for most farm gates and county road bridges;

- a seed delivery system with fewer parts than competitive systems for lower maintenance costs and reduced downtime potential;

- a wide, sturdy catwalk around the hopper for quick and easy

filling;

- easy-open slide panels for seed and drop bottoms for fertilizer to simplify cleanout;

- single levers for adjusting fertilizer and grain settings;

- a large hopper lid that swings open for easy seed and fertilizer filling with commonly used aguer equipment; and

- an easy-to-adjust "flip-flop" lid inside the hopper to load seed and fertilizer without spillage or intermixing.

Headquartered in Racine, Wisconsin, Case IH is a worldwide manufacturer and marketer of Case IH agricultural and Case construction equipment. Case IH is an affiliate of Tenneco Inc.

Headquartered in Houston, Texas, Tenneco Inc. is a diversified company with major business interests in oil, natural gas pipelines, agricultural and construction equipment, shipbuilding, automotive parts, chemicals, packaging, agriculture, land management and minerals.

SANDBLASTING AND SPRAY PAINTING

Aerial Ladder Equipment
Farm Buildings
Feed Mills
Commercial-Industrial
Repainting
Interior/Exterior



HENRY K. FISHER INC.

667 Hartman Station Rd.
Lancaster, PA

717-393-6530

G & G High Pressure (Agricultural High Pressure Washing) Disinfecting/White Washing

If you would like to reduce the cost of cleaning and disinfecting your farm, give us a call, we have a way.

Specialize in keeping the poultry industry clean and disease free.

Barry Garber
1821 Maytown, Pa.
Elizabethtown, PA 17022
717-367-3649

MUSSER & ASSOCIATES, INC.



R.D. 2 • BOX 2881

Rt. 322 & Fetterville Road
(717) 354-7561

EAST EARL, PA 17519

We Sell Complete Pole Barn Packages Designed To Your Needs:

- HORSE BARNs
- GARAGES
- STORAGE SHEDS
- POLE BARNs

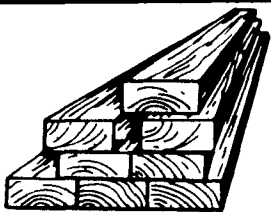
Erected On Your Site

Or

Material Packages Only (Your Preference)

ROOFING AND SIDING

- 29 Ga. Steel In 9 Colors
- Full Line Of Steel Trimming
- Full Line Of Vinyl Siding
- Aluminum Roofing And Ceiling Material
- Shingles And T-111



Buy Spruce & Treated Lumber Direct From The Mill Through Us

SQUARE & TRUSSES
BARN POLES
Pressure Treated



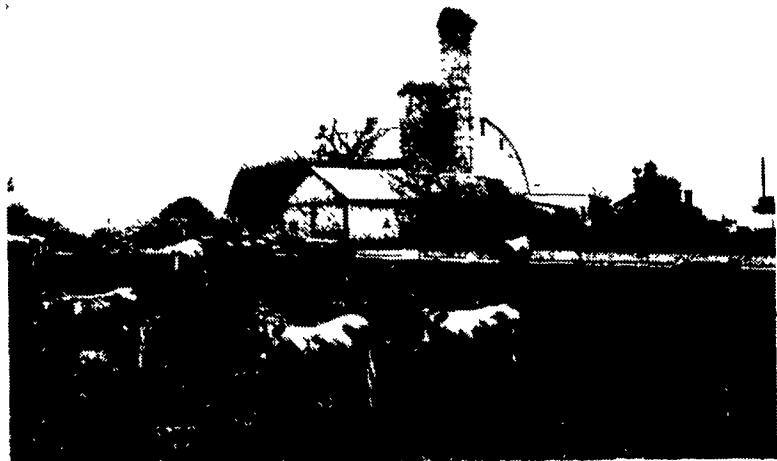
2x6 CENTER MATCH TREATED BOARDS



Complete Pole And Other Buildings

INCREASE YOUR INCOME

Bad water will lower your Income



By removing nitrates, bacteria & sulfates from your water you will have a healthier herd. Acid in water increases herd health problems.

Reduce Reproduction Problems

Reduce Herd Health Problems

Produce More Milk

We can remove these nitrates, bacteria & sulfates and put your PH to near neutral.

Call Us Before You Buy
And See Our Many Happy Users

We have competitive prices.

OREGON WATER SALES

Leola, PA 717-656-8380

If no answer, call early in the morning or evenings.