

Shenandoah Valley Livestock

Harrisonburg, Va.

Saturday, August 15, 1987

Report supplied by auction

FEEDER CATTLE TREND: STEERS 3-500 \$4 HIGHER; OTHER STEADY. M&L-1 200-300 LBS. 90.00-104.00, 300-500 LBS. 78.00-92.00, 500-700 LBS. 66.00-76.00; 700-1000 LBS. 64.00-70.50. S-L&M&L-2 300-500 LBS. 69.00-73.00; 500-700 LBS. 63.00-68.00; 700-1000 LBS. 62.00; HOLSTEIN 300-1000 LBS. 54.00-67.00.

FEEDER BULLS: M&L-1 300-500 LBS. 73.00; 500-700 LBS. 69.00-76.50. S-L&M&L-2 300-500 LBS. 75.50.

HEIFERS: M&L-1 300-500 LBS. 69.00-73.50; 500-700 LBS. 67.00-71.00; 700-800 LBS. 64.00-65.75. S-L&M&L-2

300-500 LBS. 64.00-66.00; 500-700 LBS. 61.00-65.00; 700-800 LBS. 61.00.

STOCK COWS: BEEF: SMALL FRAME COWS WITH BABY CALVES \$350-450/PAIR, MEDIUM FRAME COWS BRED 900-1050 LBS. \$40-43/CWT; BABY CALVES: 22.00-109.00.

SLAUGHTER COWS: TREND STEADY TO \$1 HIGHER. UTILITY & COMMERCIAL 2-4 38.00-45.25; CANNER & CUTTERS 1-3 34.00-39.50.

SLAUGHTER BULLS: 1&2 47.00-54.25.

LAMBS: TREND \$5 LOWER. BLUE O HIGH CHOICE & PRIME 67.75; RED O CHOICE 68.10; FEEDER LAMBS CHOICE 79.85-80.50; SLAUGHTER EWES 25.50-31.00.

HOGS: US 1-3 200-240 LBS. 57.50; BOARS 42.25.

VEALS: CHOICE & PRIME 85.00; GOOD 72.00-73.50.

Four States Livestock

Hagerstown, Md.

Wednesday, August 19

Report supplied by Auction

SLAUGHTER: FED STEERS: NONE OFFERED. FED HEIFERS: DAIRY CULLS 47.00-49.25. COWS: STEADY PRICES. HIGH YIELD 46.00-47.75; UTILITY & COMM. 42.00-45.00; BONING UTILITY 39.00-42.00; CANNER-CUTTER 37.00-40.00; SHELLY 37.00 DOWN. BULLS: STEADY PRICES GOOD 53.00-55.75; MEDIUM 49.00-52.00. VEAL CALVES: \$3.00 LOWER. CHOICE 80.00-84.00; GOOD 73.00-79.00; MEDIUM 65.00-72.00; KILLERS 80.00-80-100 LBS. 73.00-81.00.

60-80 LB. 68.00-72.00; WEAK & THIN 67.00 DOWN. RETURN TO FARM CALVES STRONG DEAMDN 2.00-5.00 HIGHER. HOLSTEIN HFRS. 90.00-107.00; HOLSTEIN BULLS 100.00-130.00; BEEF BULLS 80.00-100.00; LAMBS FEW OFFERED, GOOD 63.00-65.50; MEDIUM 60.00-63.00. SHEEP 25.00-29.50. GOATS 27.00-45.00.

STOCKER: STEERS: 300-600 LB. MOSTLY STEADY. CHOICE 72.00-78.00; GOOD 65.00-71.00; MEDIUM 58.00-64.00; STEERS 600-850 LB. CHOICE 64.00-70.00; GOOD 58.00-63.00; MEDIUM 52.00-57.00. HEIFERS: CHOICE 62.00-68.00; GOOD 57.00-61.00; MEDIUM 51.00-56.00. BULLS: CHOICE 65.00-71.00; GOOD 60.00-64.00; MEDIUM 55.00-59.00. DAIRY REPLACEMENTS GOOD RUN SPRINGING HEIFERS 700.00-875.00; FRESH 550.00-650.00; OPEN HEIFERS 550-750 LB. 67.00-68.00; SERVICE BULLS 775.00. PIGS, HD. \$2 LOWER. 20-30 LB. 17.00-31.00; 30-45 LB. 32.00-40.50. SHOATS BY LB. 150-165 LB. 55.00-57.00. STOCK BOARS 190-285 LB. 43.50-49.00; SLAUGHTER HOGS, STEADY. 220-250 LB. 57.50-58.50; 260-270 LB. 54.00-57.00. SOWS 500-600 LB. 46.50-49.00; 300-400 LBS. 45.00-47.50. BOARS 400-600 LBS. 42.00-42.50.

NEXT WEEK, AUGUST 26 WE WILL HAVE 10 HEAD OF CROSSBRED COWS & 7 CALVES OUT OF A SIMMENTAL BULL, ALSO (1) SIMMENTAL BULL.

Grantsville Livestock

Grantsville, Maryland

Saturday, August 15, 1987

LARGE: 40-45; MEDIUM: 25-38. HOGS: TOP BARROWS & GILTS 59.00-61.50; HEAVY BUTCHER 58.00-60.50; LIGHT BUTCHER 45.00-59.00; BUTCHER SOWS 40.00-46.50; FEEDER SHOATS 20.00-52.00.

VEAL: GOOD 85.00-89.00; STANDARD 70.00-80.00; UTILITY 55.00-60.00; BULL 90.00-125.00.

SHEEP & LAMBS: GOOD 62.00-73.00; UTILITY 50.00-58.00; SLAUGHTER EWES 18.00-30.00.

SLAUGHTER CATTLE: STEERS GOOD 62.00-65.00; STANDARD 58.00-60.00; UTILITY 45.00-52.00.

HEIFERS: GOOD 58.00-60.50; STANDARD 52.00-55.00; UTILITY 40.00-48.00.

COWS: COMMERCIAL 39.00-48.00; UTILITY 35.00-38.00; CANNER AND CUTTER 30.00-32.00.

BULLS: COMMERCIAL & GOOD 50.00-55.00; CUTTER & UTILITY 45.00-48.00.

STOCK-FEEDER CATTLE: (YEARLING STEERS) GOOD 70.00-78.00; MEDIUM 52.00-65.00.

STEER CALVES: GOOD 80.00-89.00;

MEDIUM 60.00-70.00.

HEIFER CALVES: GOOD 65.00-75.00; MEDIUM 43.00-60.00.

Greencastle Livestock

Greencastle, Pa.

Monday, August 17, 1987

CATTLE 537. SLAUGHTER STEERS: CHOICE & PRIME 64.00-68.00; GOOD & CHOICE 59.00-65.50; GOOD & CHOICE - HOLSTEIN 54.00-59.50; STANDARD & GOOD - HOLSTEIN 49.00-54.50. SLAUGHTER HEIFERS: CHOICE 62.50-66.00, INDIVIDUAL AT 70.50; GOOD & CHOICE 59.00-64.50; STANDARD & GOOD 52.00-59.00. COWS: UTILITY & COMMERCIAL 44.00-48.50, FEW TO 50.50; CUTTER & BONING UTILITY 42.00-46.50; CANNER & LOW CUTTER 42.75 & DOWN. BULLS - ALL WEIGHTS: YIELD GRADE 1 54.50-58.50, FEW TO 60.75; YIELD GRADE 2 48.00-55.00. STOCKER CATTLE - ALL WEIGHTS: STEERS - MEDIUM & GOOD 65.00-90.00; HEIFERS - MEDIUM & GOOD 59.00-75.00; BULLS - MEDIUM & GOOD 57.00-70.00; STEERS - HOLSTEIN 52.00-60.00.

CALVES 511. GOOD & CHOICE 125-250 LBS. 88.00-102.00; MEDIUM & GOOD 125-250 LBS. 78.00-90.00; MEDIUM & GOOD 80-120 LBS. 75.00-90.00; LIGHT & CULL - ALL WEIGHTS 75.00 & DOWN; HOLSTEIN BULLS - RETURN TO FARM UP TO 121.00; HOLSTEIN HEIFERS - RETURN TO FARM UP TO 110.00.

LAMBS, SHEEP & GOATS 71. CHOICE LAMBS 70.00-74.50; MEDIUM & GOOD LAMBS 62.00-70.00; LIGHT & CULL LAMBS 55.00-64.00; SHEEP, EWES & BUCKS 20.00-29.00; GOATS - ALL SIZES (BY HEAD) SMALL 9.00-20.00, BIG 20.00-50.00.

HOGS 160. NO. 1-3 BUTCHER HOGS - 190-225 LBS. 55.00-59.00; NO. 1-3 BUTCHER HOGS - 225-250 LBS. 58.00-60.10; NO. 1-3 BUTCHER HOGS - 250-300 LBS. 52.00-58.00; GOOD BUTCHER SOWS - 400 LBS. DOWN 44.00-48.50; GOOD BUTCHER SOWS - 400 LBS. UP 45.00-49.00; HEAVY BOARS - OVER 300 LBS. 42.00-43.25, LIGHT 45.00-48.00; PIGS - ALL SIZES (BY HEAD) 29.00-49.00.

SALE EVERY MONDAY AFTERNOON AT 3:30 P.M. & THURS. AT 1:00 P.M. HAY & STRAW SALE EVERY MONDAY & THURS. AT 11:30 A.M.

THE GOOEY BUSTERS

Who are you going to call when your lagoon is full of immovable solids? Who are you going to call when your equipment isn't capable of handling your manure management needs? Who are you going to call when you're uncertain if the free advice and free money available will solve your problems?

You're going to call The Goopy Busters at U S Agri-Systems.

At U S Agri-Systems you'll find state of the art equipment and people with the knowledge and experience to handle the goopy problems. Call U S Agri-Systems and get rid of the Goopy.

1-800-222-2948



FINEST QUALITY SEEDS AT COMPETITIVE PRICES

Alfalfa

WL 316, WL 320, Big Ten, Edge

Cert. Wheat

Tyler, Saluda, Scotty

Cert. Barley

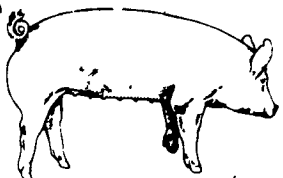
Barsoy, Maury, Pennco, Wysor

Timothy Seed

Turf Seeds

REIST SEED COMPANY

Finest Seeds (Since 1925)
Mount Joy, PA (717) 653-4121



EMERY'S BUYING STATION

OPEN TO RECEIVE YOUR MARKET HOGS

AT THE GREEN DRAGON MARKET
RD 4, EPHRATA, PA 17522
1 MILE NORTH OF EPHRATA
ON NORTH STATE STREET.

HOURS: MONDAY, TUESDAY, and
WEDNESDAY 7:00 A.M. to 11:30 A.M.
215-458-5677 Residence
717-733-9648 Office

215-458-5677 Residence
717-733-9648 Office

YOU ARE PAID FOR YOUR
HOGS IMMEDIATELY

Ken & Lois Emery, Proprietors

Green Dragon Livestock Sales



Location: Ephrata RD 4. 1
mile N. on North State St.,
Ephrata.

COWS COWS COWS SALE EVERY FRIDAY

Lots of good Northern Feeder
& Stockers. Slaughter Cows
- Bull Steer, Veal-lamb.

11:00 A.M.-Beef Sale 200-300 each week.
1:00 P.M.-Dairy Sale.
7:00 P.M.-Small Animal Sale.

For Special Sales and Herd Dispersals
on farm or at our barn or other market
information call: Office 717-733-2444,
Home 717-838-4318.

WALTER H. RISSER, Proprietor

All out of state and new buyers must have
cash or certified check or current letter of
credit from bank.

SWINE PRODUCTION SALES AND SERVICE

Feeding Programs
And Services To
Meet Your Individual
Needs

Computerized
Record Keeping
System

Grain Purchasing
And Exchange

Developing Individual
Financial Programs



Supplying Farm Fresh
Feeder Pigs

Marketing and Hedging
Services

Marketing of Genesis
Breeding Stock

Quality Products And Services - Working For YOU

419 West High Street
Elizabethtown, PA 17022

Elizabethtown
(717) 367-1525

PA Toll Free
1-800-468-5524

Shippensburg
(717) 532-7845

HAY & STRAW SALE

12:00 Noon
Every Wednesday
Westend of Avondale
at the intersection of
Baltimore Pike and
Route 41.

Harvey Z. Martin
215-268-3604
(Office)
215-445-5303
(Residence)

KING'S AUCTION KIRKWOOD Hay, Straw and Grain Auction EVERY TUESDAY

12:00
Located Rt. 472 5 miles south
of Quarryville or 8 miles north
of Oxford corner of Rt. 472 and
Noble Road at Rouse Tobacco
Station.

Lloyd H. Kreider,
Auctioneer
AU-000513L

No out of state checks
ALL TRUCKERS AND
FARMERS WELCOME



ATTENTION CATTLE FEEDERS

SPECIAL GRADED SALE

Friday, August 28
11 AM

• 150 Head Local Acclimated Cattle
All Weights

Walter M. Dunlap and Sons

Lancaster Stockyards Tel. (717) 397-5136

An Old Line Commission Firm Keeping Abreast With The Times

