

TRUCKS AND TRAILERS

22' dry van box w/side door & rear roll up door; 22' dry van box w/side door, swing rear doors, high clearance. Price reduced \$1,000 each. 717-872-7443

(2) new 10.00x20 Bridgestone radials, mounted. Two electric hyd Tuckaway lift gates, one 2,500 lb, one 2,000 lb. Call 717-367-0321

1980 Ford cattle truck, model F700, 17' wooden body, 5 spd. trans., 2 spd axle, very good shape; 1970 Fruehauf stock trailer, 40' long aluminum, good shape; 1969 Wilson possum stock trailer, needs work. 215-488-1567 after 7 p.m.

1980 Kenworth COE tractor, 445HP Detroit w/jake, 123SP trans., 8 bag air ride, polished alum. wheels all around, 11.00x24.5 radial tires. Excellent cond. Asking \$22,900. 717-367-1252.

1981 GMC 6500 stake body, 16' body, 8.2 liter diesel, lift gate, power steering, new front tires, 80,000 original miles, \$11,000. 215-584-0494

1981 IH S1854, DT466, 5+2, new paint, 90% rubber, 26' flatbed, truck is in excellent condition, \$10,000. 216-837-9004.

1982 Chevy dsl. 4WD pickup, automatic, air, cruise. 215-286-5239.

1984 Nissan 4x4 sport truck, AC, 5SP, sun roof, extras \$6,995. Stock trailer 16' \$1295. 703-869-1187.

1985 Timpte hopper bottom, 42'8" long \$14,500. 215-856-7817.

1986 C30 Chevrolet, 6,000 miles, 350 engine, 4SP trans., new Snyder box dump body. Will sell body separately. \$12,500. 301-822-7578.

1986 utility reefer 48'x13'6"x96" stainless front, back panels, Thermo King sentry unit, 11'00x24.5 Bridgestone 290 radials, sliding tandems, side door plywood-lined, 18" scuff bond. Asking \$32,900 717-367-1252.

'83 Chev. C-80 cattle truck, has new 12' wood bed. Asking \$900. OBO. 717-259-9846

'69 GMC rollback, 24' bed, V6 53 Series Detroit, 5+2, air brakes \$7,000. Berks Co. 215-286-5311.

1970 CJ5 Jeep \$1,200

717-665-6756

1984 GMC pickup, 86,000 GVW, auto., brown, 54,000 miles.
1984 Ford F150, 4 spd., 4x4, blue & white, 46,000 miles
1982 Datsun 4x4 pickup, 47,000 miles, silver w/cap
1982 GMC Suburban, diesel, 48,000 miles, 3 seats, loaded
1983 GMC Window Van, V8 auto.

Bill's Auto Sales
Route 322
Hinkletown, Pa.
717-354-8840

- AM/FM/MPX
- Stereo Cassette Player
- Special Short Chassis
- LO/DX Switch
- Fast Forward
- 24 Watts
- LED Indicators
- Stereo/Mono Switch
- Separate Balance and Tone Control



3-WAY
ONLY
\$34.95
16.95 pair
5-WAY
\$19.95 pair

CAR STEREO, CBS

CALL or WRITE



MIG WELDERS
115 Volt/220 Volt
Call For Details
Starting At
\$299

"FREE CATALOG"
PHONE 717-944-0318

CAR & UTILITY TRAILERS-\$1,195

19' Length, 16'x6'4" Deck, Steel Frame & Ramps, 2x12 Wood Deck, Weights 1,300 Lbs, Empty With 5,000 to 7,000 Gross, 2 Axel, 4 Wheel Electric Brakes, Lights, Etc
ALSO AVAILABLE - SINGLE AXEL MODELS, 6-TON AND 9-TON EQUIPMENT MODELS!

FREE SHIPPING
40 TO 100
CONTINENTAL
48 STATES



SANDBLASTERS MODEL 100 (PICTURED)

Our heavy duty Blaster model is sized to fit most larger jobs Its larger capacity allows you the flexibility to handle all types of jobs THIS UNIT FEATURES 10 ft. of sandblast hose * Holds 100 lbs of No 1 or No 2 silica sand or any dry sifted abrasives * 6 ceramic tips (2 each 3/32 1/8 5/32) * Deluxe hood and funnel * 6 in wheels for easy mobility * Moisture separator pressure gauge and convenient gun valve * Working pressure 40 to 150 PSI using 7 cu ft of air per minute at 80 P S I

#100 \$249 #70 \$199 #40 \$139
"All Models Are Pressure Type"

AIR COMPRESSORS

* 5 HP, 60 Gal. Vert. Tank
Light Industrial Duty, Single Stage, U.S Made

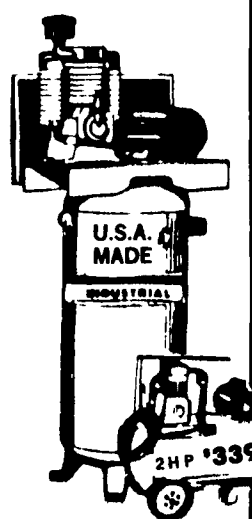
ONLY \$599

* 5 HP, 60 Gal. Vert. Tank
Med Industrial, Two-Stage Pump, 175 PSI, U.S Made

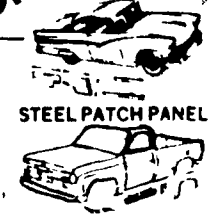
ONLY \$799

***"The King" 5 HP Full Industrial 80 Gal. Vert., Two-Stage 775 R P M Pump All Cast Iron Cyls, With Magnetic Starter All Tanks A.S.M.E Coded "This is not a misprint"

ONLY \$999



"AUTO BODY PARTS"
"PAINT & SUPPLIES"
CHECK OUR LOW PRICES ON "1st LINE NEW" PARTS
FENDERS - 73-80 Chevy Tk., 73-79 Ford Tk., 72-85 Datsun Tk., 72-83 Toyota Tk., 77-82 Courier Tk., 76-82 Chevette
Choice \$39.95 each
DOORS - 73-85 Chevy Tk. Choice \$89.95 each
ALSO AVAILABLE - BUMPERS, HOODS FOR ABOVE & MANY OTHER CARS & TRUCKS



STEEL PATCH PANELS



TOOL SHED OF AMERICA
DEPARTMENT 002
4294 EAST HARRISBURG PIKE,
MIDDLETOWN, PA 17057
LOCATED ON RT. 230 MIDWAY BETWEEN ELIZABETHTOWN & MIDDLETOWN, BLUE BUILDING

Mark VII - Pickups - Broncos - Bronco II - Stake Body - Crew Cab -

SHEEHY FORD LINCOLN MERCURY INC.
For All Your Farming Transportation Needs Through The F800 Series

BRONCOS DIESEL PICKUPS CHASSIS CAB CARGO VANS 4x4 RANGERS PICKUPS
BRONCO II SUPER CAB CREW CAB STAKE BODY BOX VANS XLT CUSTOM VANS

SHEEHY HOTLINE 717-272-7671

Unless This Emblem Is On Your Car Or Truck You Probably Paid Too Much



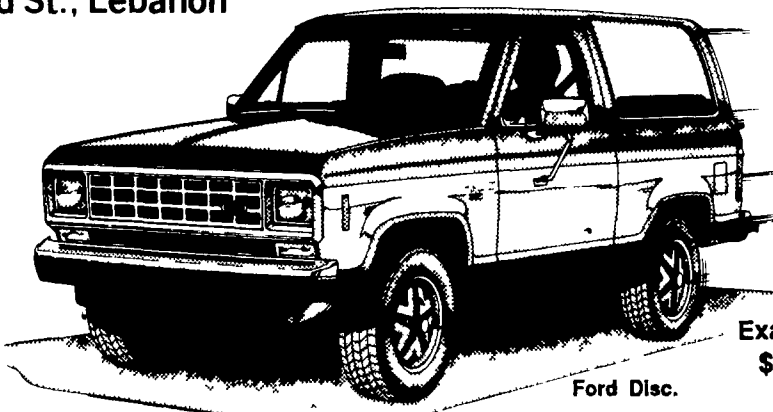
9-9 Daily
9-5 Sat.
717-272-7671

SHEEHY LEBANON

Parts Dept. Open
Daily 8-5
Sat. 8-12
717-273-8168*

20th & Cumberland St., Lebanon

Bronco II
Discounts & Rebates
Up To
\$3,000.00



Buy The Bronco II & Enjoy the Open Highway Or The Mountains

Example	\$18,083
Ford Disc.	1,000
	17,083
Sheehy Disc.	1,000
	16,083
Factory Rebate	1,000
	\$15,083
Total Discounts & Rebates Up To	\$3000.



4 WHEEL DRIVE RANGERS
HAVE REBATES UP TO \$1000.00
Buy Now And Save Like Never Before!

Tempo - Cougar - Continental - Town Car - 4x4 - Box Van - Rangers -

Custom Vans - XLT - Grand Marquis - Marquis -

Lynx - Topaz - Diesel Pickups - Mustang - T Bird