

**MARLBOROUGH MARKETS FOR SALE**  
Springer spanial purebred puppies, liver and white Ready to go. Wormed and shots 717-464-4395

JD model 50 backhoe attachment, \$1,000. Montour Co., 717-437-2778  
Black Burro, gentle, \$250/best offer Lanc. Co 717-684-3360

Ostrich chicks, silver pheasants, ruddy shelducks, paradise shelducks, young ferrets, Indian red jungle fowl, 5/8' boa constrictor Lanc Co 717-733-2425

Two 48" fans, key stoker, K-8 Modine heater, 180 BTU, greenhouse equip fanjet masterex groton controls York Co 717-938-8673

Firewood, ready cut or you cut; transfer pump, 5 HP, 2" outlet, used very little Chester Co 215-857-1303.

Registered border collie pups sire imported from Scotland, tri-colored and black and white, 6 weeks old, Aug 21 Lanc Co 717-859-2694

1 ton metal feed bin on skids, \$100, Short corn elevator Samuel S King, 1394 River Rd., Drumore, Pa 17518

NH 66 baler w/PTO Also has mount for engine, \$550 or Best Offer, York Co 717-235-6733

Ashley wood stove, in very good condition (like new), \$350 Christ M Fisher, 2114 Pequea Lane, Lancaster, Pa. 17602

'83 Datsun diesel pickup, King cab, AC, 5 spd., cap & liner, good reliable economical transportation Lanc Co 717-285-5869

Storm front carriage, good condition, new paint on wheels, \$1,450. Samuel Riehl, 415 Bartville Rd., Kirkwood, Pa 17536 Lanc Co

1 seated carriage, good condition w/lights, hyd brakes, but needs paint Lanc Co 717-859-1750

Steel wheels, power adjust fits small JD's 2240 etc 52" high, like new, \$175 or Best Offer Lanc Co 717-354-8126

708F Big Dutchman & Sheandoah waters w/legs, 12x60 mobile home, cheap Must move Lanc Co 717-665-3865

1,500 one qt glass milk bottles, 3 phase electric motors, one to 40 HP cheap! Somerset Co 814-629-6518 after 6pm

Windows, 2 double hung casements, \$15 each Pride of farm hog feeders Reasonable Bucks, 215-968-2649

1984 Chevette, dark blue, 2 door radio, one owner, inspected, good shape, 36,310 miles, \$2,875 York Co 717-755-8068.

NH 271 baler w/thrower, 2 bale wagons; mower rake conveyors; plow grinder 215-679-7325 after 7pm

1986 spring lamb, Suffolk and Southdown mix ram w/ most Suffolk features Hilltop Farm, R2, Box 2445, Gap, PA 17527

Jack Russell terrier, male, 8 weeks Mother, squirrel dog Fater, good vomit dog Shots and wormed Lycoming Co 717-326-6573, 717-437-2431

Apples, pick your own Minimum order of 50 bu., \$2 50/bu for McIntosh, Cortland and Red Delicious. Columbia Co 717-872-5263

Two row wide head for 770, NH harvester, good cond., \$400, old barn siding and barn hinges Berks Co 215-589-4308

NH 3 row snapper head, \$3,200, 50 free stalls, \$15 Chester Co 215-255-4359 or 215-268-8104

890 NH 3RN corn head, used very little, 200 gallon sprayer truck mounts Leb Co 717-949-2207

'75 Ford cabover, 20' steel flatbed with grain sides, twin telescope dump 5+2SP 391 V8, very good \$5,000 301-756-6992

AKC Cocker Spaniel puppies, 2 males, 14 mo old, 1 6 mo old buff colored, shots & wormed Cumberland Co 717-532-7288

Five Smidley hog feeders, top-adjust stainless steel bottoms, 12 holes, 1,000 lb pressure washer, 5 gal per minute Manheim, 717-665-6908.

1978 Ford F-150 pickup truck, 302, V-8, power steering, brakes, 112,000 miles Has body damage, \$100 Stewartstown, York Co 717-993-6232

AKC Boston terrier pups and windmill tour Jacob B Esh, R1, Box 428, Bird-in-Hand, PA 17505

Border collie pups, 8 weeks old, gentle, good herding instinct, very cute 215-273-3692

AC WD 45 steel wheels, pulley, 1,000 gal water tank w/ladder, \$800 Jacob M Fisher, 3302 Ashville Rd., Oxford, PA 19363

AC 60 combine, works O K, kept inside, PTO, bin, best offer Tioga Co 717-724-7362

Irrigation pump for water or manure, 500' soft hose traveler, 3,600' of pipe, 3"-6" Franklin Co 717-263-8091

Used ceiling circulating fans, 56", good condition, \$35 each 1-800-468-5524 or 717-367-1525

Arabian horses, top Polish bloodlines, excellent for race, show breeding or pleasure Special prices for loving homes 301-329-6751

3 pt box scraper 7' new, \$475, Farmall H, \$1,100 with/without loader, hay, straw Carroll Co, MD 301-848-5560

Wood-Mizer portable band sawmill, has all accessories, 70 hrs Shingle & siding attachment Col Co, Pa 717-458-6485

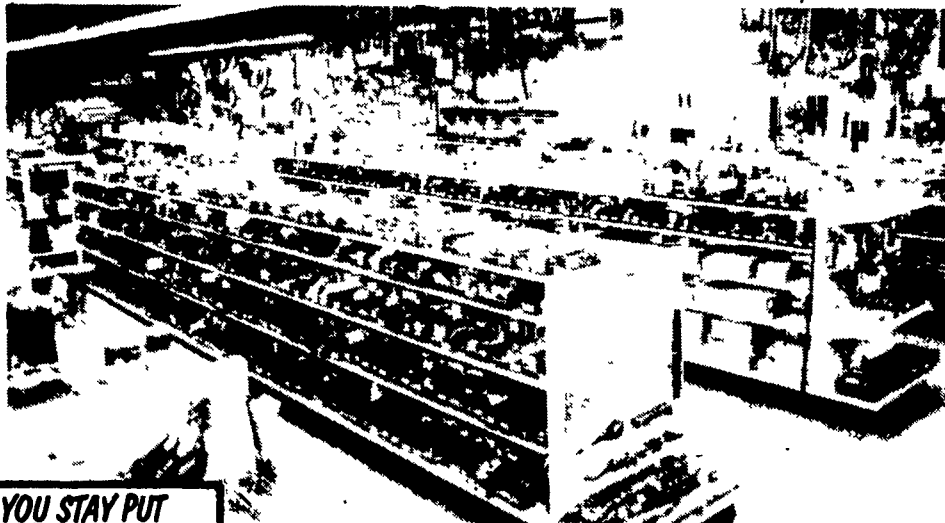
**C.B. HOOBER & SON, INC.**  
Intercourse, PA  
(717) 768-8231

**HOOBER**  
TWO LOCATIONS

**HOOBER EQUIPMENT, INC.**  
Middletown, DE  
(302) 378-9555

*The Saving Place*

**WE SHIP PARTS DAILY**  
Via UPS - PPSH - BUS - AIR FREIGHT, ETC.



**YOU STAY PUT**

Pick Up Your Phone And Place Your Parts Order With Us

**HOURS**  
Mon.-Fri.: 7 AM-5 PM; Sat.: 7 AM-Noon

**CALL US...**  
*It Could Be We Have It*

**Case**  
Authorized UPS Station

**LARGE ABSOLUTE AUCTION**  
SATURDAY, AUGUST 29th @ 10:30 A.M.

To be held in our yard at the corners of Rt. 38 & 38B Newark Valley, NY. (19 miles west of Binghamton; 7 miles north of Owego)

**TRACTORS**  
FORDS 7600 w/Cab & Loader; 5000 Major; 3600 w/1700 hrs.; 641; (4) 8N's; (2) 9N's.

MF (2) 135's (1 w/ltr.); 90; 95 (MM). IHC 1466; 1066; 706D; 560; 340; 300; 2505 Forklift; Super A; 450 LP; (2) Cubs w/Cults. JD: 4000 (2 Post); 4010; 4020; 720; 420; AR.

Also: AC G w/Mower; DB 1200, 990 w/Ldr.; Case 1030; Case 770; Case VA; Case 411; MF 1105; Belarus 420, 562 w/Cab & Loader; IHC 240 w/Ldr.; Long Tractor w/Forklift; Case 310 Dozer; Many More By Sale Time...

**1980 CHEV 1/2 TON SILVERADO DIESEL PICKUP**

Areas largest selection of new equipment will be offered at auction (10) 5' rotary mowers; (6) 6' rotary mowers; (4) 5' finish mowers; (5) 9" P.H. Diggers; (5) 12" P.H. Diggers; (10) Carryalls; (15) Boom Poles; (8) Stone Rakes; (10) Misc. Trailers; Much More!!!

Good selection also of used farm equipment. Consignments of farm machinery, tractors, industrial equipment will be accepted to this sale. No small items or junk will be accepted please.

Have consignments here by Friday @ 4:30 P.M.

Lunch Available  
4 Auctioneers  
Items subject to change due to daily business.

Sale by:

**GOODRICH AUCTION SERVICE INC.**

607-642-8688  
Rte. 38 & 38B  
Newark Valley, New York 13811

**PUBLIC AUCTION**

**MONDAY, AUG. 31**  
5:30 P.M.

RD #1 Pine Grove, Penna.

Turn off Rte. 443 on to Rte. 645 to Swopes Valley Rd., about 1 mile - Watch for auction arrow signs.

Farm sold - Equipment being sold - Family moved from area.

**Tractors - Impala Car - Farm Equipment - 3 Wheeler**  
Sale consists of: Farmall H tractor - M power pack kit; Farmall Super C tractor - tires like new; 1968 Chev. Impala Super Sport - low mileage - 46,000; Allis Chalmers 66 all crop harvester w/own engine; McCormick IH single row corn picker; IH hay baler Model 45, hay rake, 4 sets disc, 250 gal. skid tank & pump; New trailer wheels & axles for travel trailer w/12" elec. brakes; New tractor hitches, wheels & jacks, sliding door track & wheels; harrows; horse dbl. & single trees; horse plow; corn planter; 2 bottom trailer plow; 2 bottom 2 way plow; sm. horse cultivator; 2 bottom plow; butcher stove; cast iron butcher kettle; Bucket-a-day stove; garden tools; chest type freezer; plastic pipe; Honda 3 wheeler - 185; tow hooks, etc.

Sale ordered by **JACK MODESTO**

Francis (Pete) Schultz, Auctioneer  
AU-000813-L  
695-3222  
Thomas Maidenford, Auctioneer  
AU-001914-L

**TERMS:** Cash- Day of sale - Personal checks only if known by us - No out of state checks.

Short Sale - Don't Be Late!  
Clip & Save

**PUBLIC AUCTION**

Located 8 miles west of Frederick, Maryland, and 16 miles east of Hagerstown, Maryland, on Rt. 40, south on Hollow Road to first farm.

**Saturday, August 29, 1987**  
9 a.m.

**FOUR TRACTORS, COMBINE, FARM MACHINERY**

JD 3020 dsl. tractor, WF, p. steering, dual hydraulics, 500 and 1000 PTO, canvas canopy; JD 2510 dsl. tractor, WF, p. steering, dual hydraulics, 500 and 1000 PTO, selling w/JD 48 loader, 6' material bucket on manure fork; Farmall MD dsl. tractor, p. steering, remote hydraulics; Farmall B tractor; JD 55 gas combine, cab w/air, 12' grain head; 2WR and 3NR corn heads sold separately.

NH 477 haybine; NH 277 hayliner baler w/kicker; NI 270 cut/ditioner; NI 30 PTO mower w/6' sickle mower; Int. side rake; 3 rubber tire wagons w/hay sides, another w/grain sides; 28' elevator; 18' Mow conveyor; 3PT bale mover; JD #9 3PTH sickle bar mower; Fox FA forage harvester w/2RN corn head; grass head sells separately; 2 Grove silage wagons; Papec hopper blower; 40'8" pipe; NI PTO 1R corn picker w/rubber rollers; JD 494A, 4R corn planter w/fert. & gandy boxes; Kill Bros. 300 gravity wagon; Helix auger grain cart; JD 13/7 disk grain drill; JD 3PT 3/16 and 2/14 trip back plows; Int. 12' vibra shank; 2 Case 10' transport disk; MC D double cultipacker; 2 lever harrows; NI 206 and 14A manure spreaders; Gyro 3PT seeder; Long 3PT 5' rotary mower; 3PT 6' scraper blade; Danhauser post hole digger; Winco 1200 watt PTO portable generator; 12' alum. grain conveyor; Saw Mandrel; 3PT field sprayer w/150 gal. fiberglass tank; 2 wheel trailers; 12' metal hay rack; 2 feed carts; portable fuel tanks, one w/hand pump; horse drawn plows; tractor chains; lot of chains and binders; fencing boards; walnut and other dried lumber; American wire fence; snow fence; scrap metal and junk machinery; Foltz water trough; alum. and wooden ladders.

Echo 16" chain saw; anvil, forge, misc. blacksmith tools; air compressor; other shop, hand, garden and barn tools including some primitives.

JD 210 lawn tractor—JD 2 wheel lawn cart  
Simplicity 5HP rototiller

1968 Chevrolet 1/2 ton pickup truck  
1958 Chevrolet 60 truck w/14' 10T hydraulic body  
1946 Chevrolet 1 1/2 ton truck w/12' body

**TERMS:** Cash or approved check. Not responsible for accidents.

For: The Estate of **Maurice J. Schroyer and Flora E. Schroyer, co-owners**

Auctioneer: **Robert C. Mullendore**  
Boonsboro, MD  
301-582-0546  
Clerk: **C.L. Metz**

Lunch Reserved