

**SEE THE RHINO DISPLAY AT
AG PROGRESS DAYS**

**DON'T MISS YOUR OPPORTUNITY
TO SAVE!**

**Get Perfectly Level Seedbed Making
At Discount Prices**



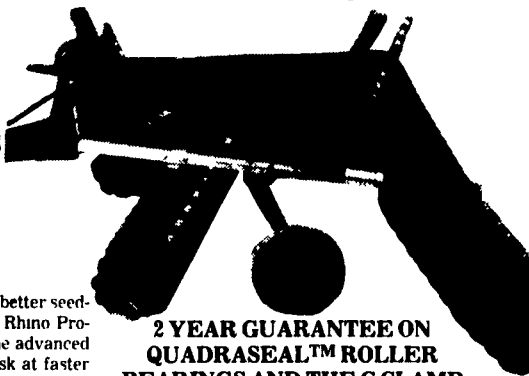
ONLY ONE LEFT IN MANY SIZES

The Do It All Cut And Finish

**RHINO 76 & 77 DOUBLE
OFFSET DISK**

**A Disk Harrow
That Is Self-
Leveling With A
Flex Frame And
C Clamp Flex
Bearing Hangers**

**A Do-It-All Cut
& Finish...And
Affordable!**



**2 YEAR GUARANTEE ON
QUADRASEAL™ ROLLER
BEARINGS AND THE C CLAMP
FLEX HANGER**

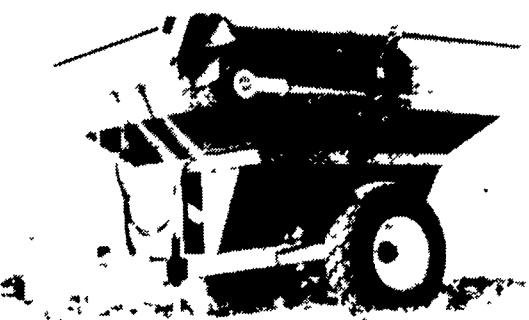
If you want faster incorporation, better seedbeds, and less time in the field, Rhino Products R76 is the disk for you. The advanced Double Offset design lets you disk at faster speeds, vary the field speed on-the-go, and still leave a uniform level seedbed behind.

All Price - Are With Hyd. Cylinders And Hoses

- **MODEL 76R2426737**, 8'10" Width Cut, 9" Spacing On Front & Rear Gangs, 22" Blades
List \$4,462 **DISCOUNT SALE PRICE...\$2,798**
 - **MODEL 76R2426767**, 8'10" Width Cut, 9" Spacing On Front & Rear Gangs, 24" Dia. Smooth-Type Blades Last One In Stock
List \$4,763 **DISCOUNT SALE PRICE...\$2,938**
 - **MODEL 76R2636737**, 8'10" Width Cut, 22" Blades, 9" Spacing On Front Gangs & 7 1/2" Spacing On Rear Gangs
List \$4,718 **DISCOUNT SALE PRICE...\$2,995**
 - **MODEL 76R2826767**, 10'3" Width Cut, 9" Spacing On Front & Rear Gangs w/Smooth-Type 24" Blades
List \$5,152 **DISCOUNT SALE PRICE...\$3,530**
 - **MODEL 76R3636737** 11'1" Width Cut, 9" Spacing On Front Gangs, 7 1/2" Spacing On Rear Gangs, 22" Blades
List \$5,725 **DISCOUNT SALE PRICE...\$4,190**
 - **MODEL 76R3226767**, 11'8" Width Cut, 9" Spacing On Front & Rear Gangs, 24" Dia. Blades
List \$5,783 **DISCOUNT SALE PRICE...\$4,190**
 - **MODEL 76R3626767**, 13'1" Width Cut, 9" Spacing On Front & Rear Gangs, 24" Dia. Blades
List \$6,363 **DISCOUNT SALE PRICE...\$4,568**
- MODEL 77...A Little Heavier Than The 76's**
- **MODEL 77R3626761**, 13'1" Width Cut, 9" Blade Spacing On Front & Rear Gangs, 24" Dia. Blades, Only One Left
List \$7,001 **DISCOUNT SALE PRICE...\$5,370**

**UNVERFERTH
GRAIN CART**
475 Bu. Cap.

**SPECIAL
\$5,695**



Compare these features:

• All Unverferth grain carts feature the following:

- Low-profile design
 - Slip Plate hopper coating
 - Hydraulic auger lock
 - Side-mounted, forward folding auger
 - Axle torque bars
 - Movable, 2 1/2" drop-leg jack with 7,000 lb capacity
 - Complete coat of primer, inside and out
 - Shear-pin equipped oscillating hitch
 - Non-skid safety steps
 - Heavy tube frame construction
 - Continuous, 1/4" auger flighting
 - Interchangeable, bolt-on axles
 - High speed unloading
 - Continuously welded auger tube
 - Weep hole in box members
 - Twelve-inch auger with adjustable damper
 - Center dump gate
 - Spring-loaded bearing in auger to assure precise inside alignment
 - Cast iron gearbox with precision-ground gears
 - Drive line slip clutch
 - Rigid 1/2" steel mating plates at auger hinge point
 - Hopper sight glass
 - Inside steps
 - Safety screen over auger pit
 - Durable, 3/8", high-pressure hydraulic tubing and hose to tractor
- Every Unverferth grain cart is fully tested before it leaves the factory to ensure top-flight performance every time out.

PTO DRIVE TRANSPORT GRAIN AUGERS

In Stock:

- 6"
- 8"
- 10"

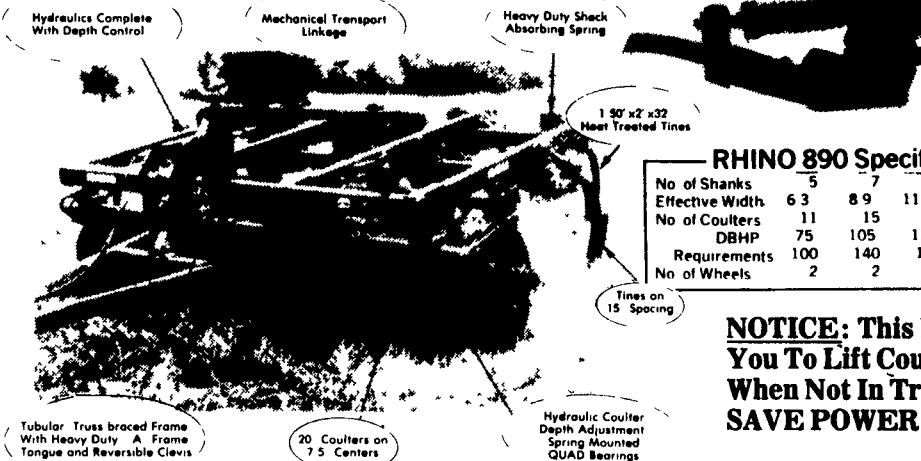
**Example:
6"x41'**

\$1,375



RHINO 890

- Features Hydraulic Raised and Lowered Coulters Gangs That Allow You to Raise Slicer Blades When Not In Trash That Saves Power, Fuel, Gives More Speed, Less Wear, Then When You Reach The Heavy Trash That Needs To Be Cut, You Lower Slicer Blades And Keep Right On Going!
- 1 1/2" Thick x 32" Tines Give You Heavy Duty High Clearance!

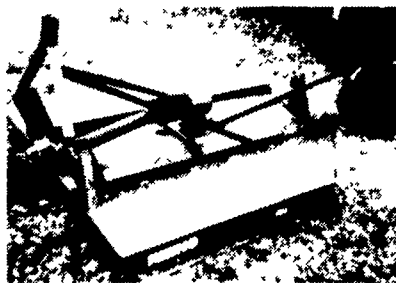


RHINO 890 Specifications

No of Shanks	5	7	9	11	13
Effective Width	6.3	8.9	11.3	13.9	16.3
No of Coulters	11	15	19	23	27
DBHP	75	105	135	165	195
Requirements	100	140	180	220	260
No of Wheels	2	2	2	4	4

**NOTICE: This Enables
You To Lift Coulters Out
When Not In Trash —
SAVE POWER & WEAR**

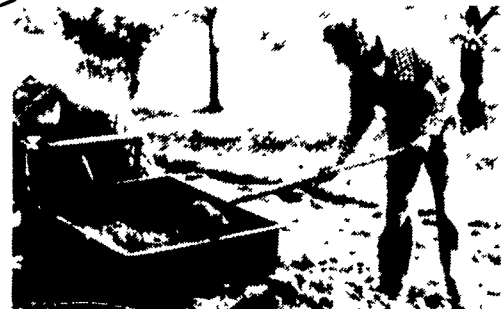
	Reg. Price	DISCOUNT SALE PRICE
• 5 Shank	\$5,321	\$4,150
• 7 Shank	\$7,851	\$5,350



RHINO SE SERIES ROTARY CUTTERS

- 5 Ft. Model SE5SPECIAL **\$550**
- 6 Ft. Model SE6, Shear Bolt Protection
List \$929 **\$720**
- 7 Ft. Model SE7 w/Slip Clutch
List \$1,495 **\$1,196**

**On Display At
AG PROGRESS DAYS
DUMP
&
CARRY**
\$295



- 3 Point Hitch Hookup (Cat. 1)
- 40x40x12 Inch Box
- 11 Cu. Ft. Capacity (500 lbs. max.)
- Lowers to Ground Level to Load
- Load Cargo at Ground Level

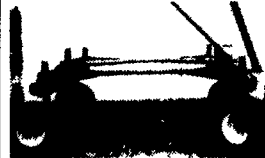
- 3 Position Tail Gate
- Raises to Level for Transport
- Easy Touch Gravity Dump
- No Hydraulic Hookup Problems



**We Are Your
Dealer For
ZIMMERMAN
BALE
ELEVATORS**

- New 36' Bale Elevator
\$1,835

SEE AT AG PROGRESS



**MARTIN
WAGON GEARS**
All Have
Extendable
Tongues

- 6 Ton Cap. w/Auto Tires..... **\$460**
- 8 Ton Cap. w/11Lx15 Tires **\$675**
- 10 Ton Cap. w/11Lx15 Tires **\$725**
- 12 Ton Cap. w/Double Pole &
12 S Tires **\$1,125**

BUY 3 OR MORE & SAVE MORE!



**SEE US FOR YOUR USED
TRACTOR NEEDS**

In Stock Now And More Coming!

All Machinery Subject To Prior Sale

- Case 430 Gas, Narrow Front End, Gear Trans., 8 Speed, 3 Pt. Hitch...~~\$2,500~~... Make Offer
- Case 970 White Tractor, 1975, ROPS w/Enclosure, Power Shift, 2800 Hrs., 18.4x38 - 80% Tread, Dual Remotes, Front Wts.....~~\$8,500~~...Make Offer
- Case 2090 w/Cab, Power Shift, 1600 Hrs., 18.4x38 Tires, 1979..... **\$12,800**
- Case 2090 w/Cab, Air, Heat, Radio, 10 Front Wts., Power Shift, 20.8x38 Firestone Tires**\$18,900**
- Case 1370 Fender Tractor, 1765 Actual Hrs., 20.8x38 Firestone Radial Tires, 14Lx16.1 Front Tires, 11 Front Wts., Power Shift, Dual Remotes, A Real Work Horse..... **\$10,200**
- IH 856 Year-Around Cab, 18.4x38 Tires, 10 Front Wts., New Clutch, Overhauled 1500 Hrs. Ago, Dual Remotes..... **\$6,500**
- JD 2950, Like New, 450 Hrs, Cab, Air, Heat, 18.4x38 Dual Remotes, Hi-Low Trans. **\$21,000 or Best Offer**
- Steiger PTA 325, Auto. Trans., Caterpillar Engine, 24.5x32 Tires w/Duals.....**Make Offer**

**BINKLEY-HURST
BROS. INC.**
SALES PARTS SERVICE

133 Rothsville Station Rd., Lititz, PA 17543
Located 1/2 Mile North of Rothsville

(717) 626-4705

Hours: Mon.-Fri. 7 AM - 5 PM; Sat. 7 AM - 11:30 AM
Sun. Closed - Lord's Day

PARTS DEPT. MON., TUES., THURS., FRIDAY til 8 pm
Emergency Parts Dept: 717-626-0885 717-933-4753 717-273-5673