

Public Auction Register

Closing Date Monday 5 00 P M
of each week's publication

TUES SEPT. 8 - 21 Acre Farm 512 Newswanger Rd., Ephrata Twp., Lanc. Co., PA. Rt. 322 E. of Ephrata, turn at Hinkletown Light, 2nd road left. Terms by Titus N & Mary L. Weaver T Glenn & Timothy G Horst, Aucts

FRI. SEPT 11 - RD 2, Lewisburg, PA Wood-Ann Inc. Complete Dairy Herd Dispersal. Kling's Auct Serv, Sale Mgrs

FRI SEPT 11 - 1:30PM State Graded Feeder Pig Sale Grading 7:30 until 11:30 a.m. Carlisle Livestock Market, Inc., Exit 12 off I-81 717-249-4511

FRI. SEPT 11-7PM Horse Sale. New Holland Sales Stables, Inc., New Holland, PA

Owner. Little IKE Eichelberger, Auct
SAT. SEPT. 12 - 9AM 64 Acre Farm, Farm Mach., Antiques, HH. Red Lion take Rt. 624 N to Bittersville, turn left onto Winters Rd go to stop sign, turn right to site. Beulah A. Olewiler, Owner. Melvin Haines & Ralph Brønneman, Aucts.

SAT SEPT 12 - 9AM Real Estate, Antiques & Collectibles, 1951 Pontiac Coupe, HH. Corner of Market & State Graded Feeder Pig Center Sts., in the borough of Gratz, PA Estate of Katie B Muth Dockey, Dockey & Deppen, Aucts

SAT SEPT 12 - 10AM Guns, Pistols & Rifles Southern Manheim Twp

Fire Hall, just N. of Lancaster along Fruitville Pike At Rt. 30 bypass take Fruitville Pike S to sale By Agent for owner Howard Shaub, Auct

SAT SEPT 12 - 11AM Purebred Polled Hereford Cattle Autumn Harvest Classic II, Spring Bottom Farm, Fairfield, PA Dale Stith, Auct

SAT SEPT. 12 - 1PM 12 A Farmette Plus 2 Additional Parcels East end of McAlisterville, Juniata Co Mr & Mrs Paul Hornberger, Owners Long's Auct Serv

MON SEPT 14 - Annual Fall Auction by Lebanon Valley Auct Co, Inc at Lebanon Area Fairgrounds,

Lebanon, PA Consignments Welcome 717-867-1809.

MON. SEPT 14 - 3PM Farmersville Eq., Farmersville, PA. Semi-Annual Lawn & Garden Consignment Auction. Paul E Marwin & John D Stauffer, Aucts

WED. SEPT 16 - 10AM Mercersburg, PA. Com-

plete line of Farm Machinery and Dairy Herd Dispersal. Alfred W. Zelger Estate Kling's Auct Serv, Sale Mgrs.

THURS. SEPT 17 - 12.30PM 336th Special Guernsey Sale at Shipensburg Fairgrounds. PA Guernsey Breeders Assoc The Merryman Co., John B Merryman, Auct.

Dairy and Livestock Sales

DAIRY DISPERSAL AUCTION

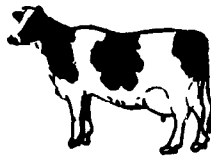
Thursday, August 20, 1987
11:30 a.m.

At the Jim Adriance Farm, turn off Rt. 706 just east of Montrose, PA. Follow yellow arrows. Montrose is Exit #67 off I-81, Susquehanna Co.

93 HOLSTEINS 93

All one dairy. Moved for convenience. 57 mature cows, 11 bred heifers, 11 open heifers, 14 yearlings and started heifers. Cows in all stages of lactation. Heifers due December and January. Some cows are due now through this fall. Many of them freshen late winter and early spring. Bred back three to four months. Mostly young with good udders, type, size and condition. A tie stall dairy with lots of potential for right now and later. Vet examined for pregnancy and health charts.

TERMS: Cash or good check.
Jim Adriance, Auctioneer
AU4-L
Montrose, PA
717-278-1574



SPECIAL DAIRY HEIFER SALE

AUGUST 21, 1987
7:00 P.M.

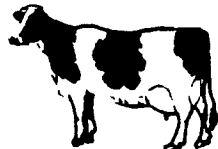
Located: Jersey Shore Livestock Auction, south of Jersey Shore, PA, on Rt. 44.

OVER 100 HEIFERS CONSIGNED!
Health Charts Required

Auctioneer: Harold Fraley
Lic. #AU1194L

Owners:
C.W. BIERLY & SON
814-349-8760
814-422-8907

Two Herd Dispersals



Belleville Livestock Market
WEDNESDAY, AUGUST 19, 1987
1:00 P.M.

Huntingdon County Herd
27 Head Holsteins

7 Recently Fresh (May, June & July); 4 Due Or Fresh August; Remainder In Various Stages Of Lactation.

Pregnancy Checked And Guaranteed.
Consigned by ALBERT MORGAN,

Shirleysburg, Pa.

Second Herd Also 26 Head

16 Holsteins
9 Brown Swiss
1 Jersey

A Lackawanna County Herd

SAT SEPT 12 - Brck Rancher, Antiques & HH, 1986 Car Located 525 Indiantown Road, Lanc. Co Also selling at same location 21 75 acres woodland located north of Blainsport just off Rt. 897 Abram W Eberly Estate Paul E Martin & John D Stauffer, Aucts

SAT SEPT 12 - 8:30AM Antiques, Furniture, Tools, Power Tools, Classic Automobile, PU, etc 1070 Highspire Rd., Harnsburg, PA I-83 N of Harnsburg keep right onto 283 bypass to Exit 1, 441 E., at stop sign turn right, to red light turn left onto Eisenhower Blvd. go to next red light turn left onto Highland St., turn right onto Highspire Rd., or 1 mi off PA Tpk Harrisburg E exit Mr Angelo I Bruscia,

LARGE ABSOLUTE AUCTION

SAT., AUG. 29, 1987
AT 10:30 A.M.

To be held in our yard on the corners of Rt. 38 & 38-B, Newark Valley, N.Y. (19 miles west of Binghamton; 7 miles north of Owego).

Farm & Industrial tractors, large selection of new & used equipment, trucks & more. Watch next weeks paper for listing.

Sale by:



GOODRICH AUCTION SERVICE INC. 407-642-8888



TWO COMPLETE HERD DISPERSALS

At Shady Lane Dairy Sales, Inc., 1/4 Mile West Of Quarryville, Pa. Off Rt. 372 On Oak Bottom Road.

Complete Registered & Grade Jersey Dispersal

For Bradley E. & Laura L. Emig, R.D. #12, York, Pa.
WEDNESDAY EVE., AUG. 19, 1987
at 7:30 P.M.

56 Head Of Outstanding Registered & Grade Jerseys

Sires Include: High Land Magic Duncan, Top Brass, State 78, Shadewell Fasinator, Magic of Auston & Favorite Saint.

Service Sires Include: Shadewell-Fascinator, Bernard, Top Brass, Early Settler, High Land Magic Duncan, Magic of Ogston, Soldier Boy & Several Young A.I. Sires.

Top Individuals Include:

"Twinkles" - A Fascinator Bred To Top Brass With 17,155M.
"Dorae" - A Magic Of Ogston, Just Fresh With 15,578M In & Up To 78 Lbs.
"Mindy" - A Colonel Just Fresh With 15,155M.

Special Mention: Of Service Age Bull Out Of A Holmes Survive Langdon Daughters With 19,155M. Sired By Top Brass.

Short Notice Susquehanna Herd Dispersal

WEDNESDAY NITE, AUG. 19th

Approx. 9 P.M.

Immediately Following Jersey Herd Dispersal

At 7:30 P.M.

75 Head Holstein Cows And Heifers 75

46 Head Holsteins, 10 recently fresh. A real top herd. Really a Fall base bred herd with 30 head due Aug., Sept., Oct., Nov. With milking cows ave. 60 lb. per day. This herd is in top shape, extra large cows. Ave. but on whole herd 1,400 lb. or better. Many cows have milked 80-100 lb. per day. Selling due to help problems. Please mark this date. A herd well worth seeing sold. A lot of fall milk. These Susquehanna cows are noted for lots of production. They really please.

Also 25 Head Close And Fresh Cows
And 1st Calf Heifers

1 Top Load Of Fresh And Close Cows And 1st Calf Heifer For Marvin Eshleman From Franklin County. 30 Day TB Blood Test

Consigned to

SHADY LANE DAIRY SALES INC.

Quarryville, PA

Glenn 1-717-786-2750

Dave 1-717-786-1725