

## Public Auction Register

Closing Date Monday 5 00 P M  
of each week's publication

# PUBLIC AUCTION

AT RUDNICK'S SALES  
ROUTE 213, GALENA, MD.  
SATURDAY, AUGUST 22, 1987  
AT 10:00 A.M.

ANTIQUENESS AND FURNISHINGS FROM WILMINGTON TO INCLUDE: TILT TOP TABLE WITH BIRD CAGE, CHERRY DOUBLE DROP LEAF TABLE, ANTIQUE PENNA. CHINA CLOSET 2 PC., VICTORIAN CHAIRS, EMPIRE CHEST, GILT MIRROR, (2) 22 RIFLES, 12 GA SHOTGUN, VICTORIAN MARBLE TOP TABLE, G W T W LAMP, ANTIQUE CANDLESTAND, FIREPLACE EQUIPMENT, REGINA MUSIC BOX WITH 15" DISCS, VICTORIAN OVAL TABLE, HALF SPINDLE BACK CHAIRS, ARROW BACK CHAIRS, CANE SEAT CHAIRS, OIL LAMPS, 5 PC. PITCHER AND BOWL SET, ORIGINAL OIL PAINTINGS BY (LEWIS MARTIN MILLER), WASH STAND, DRY SINK, CROCKS, SILVER PLATE, CHINA, STEMWARE, CAKE PLATES, FURS AND COATS, CANE SEAT ROCKERS, BLANKET CHEST, LINENS, JEWELRY AND MUCH MORE... PLUS A SELECTION OF ORIENTAL RUGS, RUNNERS AND THROWS... SALES HELD TWICE MONTHLY, THE SECOND AND FOURTH SATURDAY OF EACH MONTH... OUR NEXT SALE WILL BE SAT. SEPT. 12, 1987

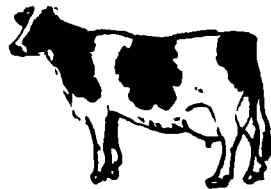
REASONABLE TRUCKING, FREE STORAGE AND ADVERTISING AT ALL TIMES, WE WILL COME TO YOUR PLACE WITHOUT COST OR OBLIGATION...

CONSIGNMENTS ACCEPTED DAILY  
HARRY RUDNICK & SONS, INC.  
Sales Manager, Auctioneers,  
Real Estate Broker  
Galena, Md. 21635 Phone: 301-648-5601

# AUCTION

At the HILES DAIRY FARM, R.D.#1, Dawson, Pa. From New Stanton Exit 8 of the Pa. Turnpike, take Rt. 119 south to Route 819 south. Five miles south of Scottdale, one mile north of Dawson, watch for auction arrows.  
**SAT., AUGUST 22, 1987**  
10:00 A.M.

**HOLSTEIN  
DAIRY  
CATTLE**



**40 HEAD MILK COWS:**  
7 registered Holsteins, 31 High Grade Holsteins, 1 Red-White Holstein, 1 Guernsey  
(5 fresh June, 5 fresh July, 5 due August, 2 due Sept., balance in good flow of milk)

**10 MATURE HOLSTEIN HEIFERS:**  
4 bred, due in Sept. & Oct.; 6 large open heifers, includes 1 Red-White Holstein

**5 REGISTERED HOLSTEIN HEIFERS:**  
6 months to 1 year old

TB and Bangs Accredited Herd. Tested for Interstate shipment. Atlantic Breeding and Tri-State Breeding. Pregnancy checked.  
A nice young herd. Well uddered, good producing, big strong dairy cows.

**HILES DAIRY FARM, owner**  
Phone: 412-529-7112

**TERMS: CASH** or check w/proper I.D.  
Lunch Available

**L.H. KUZNIK & J.L. HENRY**  
auctioneers  
AU-000524-L - AU-001681-L  
412-423-4631

MON. AUG. 17 - 4PM HH, Antiques, Riding Mower, Farm Eq., Shoe Eq. Between Pennsburg & Quakertown, turn S. off Rt 663 onto Gerryville Pike, approx. 2 mis., turn E onto Finland Rd for 1 mi to farm, Montg Co, PA For Linford F & Mary K. Nace Ralph W Zettlemoyer Auct Co Inc

TUES AUG 18 - 9AM Longenecker Farm Supply Going Out of Business

Sale, Rheems, Lanc. Co., PA. Just off Rt. 230 E. of Elizabethtown, 20 mis. W. of Lancaster, 20 mis. E. of Harrisburg, PA Wolgemuth Auct. Serv

TUES. AUG 18 - 10AM Construction Eq., Dump Trucks, Trailers, Light Vehicles, Contractors Tools Delaware Valley Contractors, Montgomeryville, PA Vilsmeier Auct Co, Inc.

TUES AUG 18 - 11AM 80 Head High Grade Holsteins 1 mi W of Mt Pleasant, MD, or 3/4 mi SE of

Frederick, MD, Rt. 26, 1/4 mi SE of Ceresville, MD, off Rt. 194 (opposite Glade Valley Horse Farm) Charles & Marian Main, Owners. Robt C. Mullendore, Auct

TUES AUG 18 - 5PM By Fred N Buch & Helen I Buch At 1419 W Main St., Ephrata, Lanc Co, PA Antique Millwork, Lumber, Hardware & Tools T Glenn Horst & Sons, Aucts

TUES AUG 18 - 5PM Masonry Eq, Trucks, New Wood Stoves, 1963 Impala Conv, Lawn Tractor 1155 Furnace St., Hellertown, PA Turn W off Main St at 7-Eleven then right on Furnace St 1 block off Main

Lancaster Farming, Saturday, August 15, 1987-F33

behind Theater By J.C. Kearns. Ralph W. Zettlemoyer Auct. Co Inc.  
WED. AUG. 19 - 10AM Bankruptcy Sale of Surendra P. Sinha d/b/a VMS Construction Co Ed & Sons Salvage Yard, 7th & D Street, Wilmington, DE Contractors Eq Rudnick Assoc, Aucts

WED AUG 19 - 3 30PM Butcher Eq, Antiques, etc RD 2, Orangeville, PA Follow Albertson's Meats and Auction signs off Rt 487, 3 mis N of Orangeville at Forks Seller Clyde Albertson, Jr Olen R Knecht, Auct

WED AUG 19 - 6PM PA's

10th Performance Tested Boar Sale at PA Dept. of Agriculture's Meat Animal Evaluation Center, 651 Fox Hollow Rd., State College, PA

WED AUG 19 - 7 30PM Reg & Grade Jersey Dispersal for Bradley E & Laura L Emig Also 75 Head Holsteins approx 9PM At Shady Lane Dairy Sales Inc 1/4 mi W of Quarryville, PA, off Rt 372 on Oak Bottom Road

WED AUG 19 - 8PM 57 Head Reg Jersey Mature Cows & Heifers At Shady Lane Dairy Sales, 1/4 mi W of Quarryville Consigned for Mr & Mrs Brad & Laura Emig.

THURS AUG 20 - 10AM C D T Fertilizer Eq 20 mis E of Rockford, IL 40 mis NW of Chicago, IL From Intersection of US 20 & 23 in Marengo, IL, go 1/4 mi. E on US 20 to East St (At Marengo Union Funeral Home), then N 8 mi to auction Jackson Farm Store Inc, Owner. Schrader Real Estate & Auct Co

THURS AUG 20 - 6 30PM Large Farm Mach, Irrigation, Milking Eq Oakfield, NY Western New York Dairies on Batavia-Elba Twp Rd, 2 mis W of Rt 98, 2 mi E of Rt 63, 2 mi N of NYS Thruway Exit 47 Wm Kent Inc, Aucts

THURS AUG 20 - 7PM 2 1/2 story brick home and 2 story barn & workshop Approx 10 mis E of Lancaster, PA, turn N on Belmont Rd in Leaman Place approx 1 mi N off Rt 30E Take W Pequea Lane off N Belmont to 3421 W Pequea Lane, Leacock Twp Enos E. & Anna Mary Beiler, Owners Ron Funks Auctions

FRI AUG 21 - 6 30PM Consignment Sale of Feeder Pigs & Feeder Cattle Keister's Middleburg Auct Sales, Inc, Rt 522, 3 mis E of Middleburg, PA, 5 mis W of Selinsgrove, PA Don & Walt Keister, Owners.

## PUBLIC AUCTION

SATURDAY, AUG. 22—  
10:00 A.M.

SALE TO BE HELD AT  
JERSEYTOWN COMMUNITY CENTER  
JERSEYTOWN, PA. ON RTE. 254  
WEST OF MILLVILLE

**Pine 12 pane 1 pc. corner cupboard;** Jelly cupboard, 3 drawer over 2 doors; dry sink; dining room suite (hutch, buffet, table, 6 chairs); **Solid chestnut desk, 2 drawers, 2 doors w/secret compartment (mid 1800's);** oak library table; old dough box w/legs; washstand; spool bed (nice); spoon carved dresser w/mirror; **large wood 3 drawer blanket chest signed and dated 1817 w/strap hinges;** Cottage style dresser; **Imperial chest of drawers; fancy side by side secretary desk;** old wood linen cabinet; 2 pc. bedroom suite; 5 pc. bedroom suite; 3 pc. living room suite; 4 pc. Waterfall bedroom suite; 2-9x12 carpets; **Service for 6 coffee set w/gold flower and leaf cluster w/handleless cups;** Service for 6 tea set w/gold banding wreath and star w/handleless cups; Service for 12 dishes w/gold edging; Coffee grinder; arrow back chairs; misc. crocks; wicker stand w/4 shelves; carnival bowl w/raised peacock; unusual mustache cup w/legs; ironstone bathroom set; crock w/blue flower design; small wood stool w/cast iron legs; Japanese tea set (nice); blue willow mush cup; kerosene lamp; hanging mirrors; wood stools; magazine racks; jardiniere w/stand; plank bottom rocker; many old picture frames; old pictures and postcards; 2 cane bottom chairs; costume jewelry; jewelry boxes; wicker plant stand; **old wooden purchase board;** many old bird cages; several hand-stitched quilts; **old hanging store lamp;** old cloth photo album w/pictures; lady's old hats and boxes; oak telephone stand; glass planetarium; old tin quilting patterns; sold rolling pin; dishes, pressed, Depression, milk glass; Sears Coldspot refrigerator/freezer; Maytag wringer washer (SS tub); alum. porch glider; table lamps; floor lamps; elec. heaters; Singer elec. sewing machine; elec. lawnmower; alum. stepladder; wood ext. ladder; odd wood chairs; many misc. pots & pans; **MANY ITEMS TOO NUMEROUS TO MENTION!**

**AUCTIONEER'S NOTE:** All of the above items have been moved to Jerseytown Community Center due to unavailability of auction and parking space. Some of the auction items have been in the family 5 to 8 generations. Statements made day of sale take precedence over all previously written material!

OWNER OR AUCTIONEER

**NOT RESPONSIBLE FOR ACCIDENTS!**  
TERMS: Cash or travelers checks. Complete payment auction day. Checks accepted with current bank letter of credit unless known by Auctioneer or Seller.

SELLER:  
**ALVIN J. MASTERS**  
**OLEN R. KNECHT, AUCTIONEER**  
AU-001765-L

R.D.#2, Box 15, Orangeville, PA 17859  
(717) 683-5955

ASSISTED BY: JOE KINN, AUCTIONEER

## PUBLIC AUCTION LYKENS VALLEY FARM MONDAY EVENING, AUGUST 24, 1987

At 7:00 P.M.

Located just off Route 25. Turn North at Riegels Car Lot, just before Crossroads Market. Go 1 mile, turn right to farm on right. Signs up.

\* 63.5 Acres Along Hard Road  
\* 4 Bedroom, 2 Story House, Bath, Kitchen, Living Room.  
\* Bank Barn, Storage Sheds, Outbuildings.  
\* Unlimited Potential for a Lovely Farm Setting.

TERMS: Deposit of \$10,000.00 in Cash, Cashier or Certified Check payable to Kerry Pae Auctioneer day of Auction. Balance due in 45 days at settlement. For additional information/inspection, call 717-236-3752 or 717-921-2332.

**SIDNEY & GERALDINE SHULTZ**  
Owners

AU 1367



**KERRY PAE**  
**AUCTIONEERS**  
Harrisburg, PA  
(717) 236-3752



## PUBLIC AUCTION SATURDAY, AUGUST 22, 1987

9:30 A.M.

RD 2- Pine Grove Along Sweet Arrow Road. Turn off Rte. 125 at Tidy Car onto Sweet Arrow Lake Rd., about 2 miles. Watch for auction arrows.

Contents of Thomas Walton Home:  
Household Goods, Antiques, Glassware,  
Furniture, Clocks, Misc. Items

Sale consists of furniture: 7 Pc. Birdseye Maple Bedroom Suite- Dresser w/Mirror, Vanity w/Chair, Rocker, Chair, Bed, Hi-Boy w/ Mirror, Sq. Center Table, Center Table, Oak Library Table, Copper-Lined Smoke Stand, Humidifier, Sm. China Closet, Desk, Windsor-Type Chairs, Victorian Drop-Leaf Table, Chair, 2 Fancy Rod-Iron Stools, Old Spindle Crib w/Pressed back, Fancy Wall Mirror, Childs Wicker Rocker, Slight Damage. **CLOCKS:** New Drop Calendar Clock w/Pendulum- Ingram Co., Mantle Clock, Typany Type Lamp, Parallel Table, Base for Typany Lite, Lamps, Floor Lamp w/ Alabaster, Picture Frame, Oval w/Curved Glass, Reverse Paintings, Lg. Prints, Print of Hunting Dogs. **GLASSWARE:** Cut Glass Bowl, Blue Carnival Pitcher w/5 Glasses, Orange Carnival, Blue Opalescent, 3 Leg Bowl, Ruby Red, Depression- Pork- Red & White-Green- Yellow, Adams Rose, Cake Compote, Copper Items, Approx. 47 PC. OF FIESTA WARE: Breakfast Plate Of Pres. Taft, Willowware, Royal Dalton Bowl, Creamers, Pitcher, Copper Lustre Cups Signed T.L. Rhoads, Physician To Pres. Taft, Checklostavic, Germany, Oriental Pcs., Imperial Austria Butter Pats, Holly Set, Misc. Dishes, Shirley Temple Creamer. **MISC. ITEMS:** Sm. Sad Irons, Lg. Presidential Coins, Sterling Silver, Candleholders, Silver Pcs., Lg. Solid Brass Urn Dated 1902, German Defender Gun, Hunting Knife, Adv. Pcs; Knick-Knacks, Sm. Gold Jewelry Box, Jugs, Many More Items To Numerous To List.

Sale Ordered By

**THEODORE B. BUTLER**

Francis (Pete) Schultz Auctioneer  
AU-000813-L  
695-3222

Thomas Maldenford Auctioneer  
AU-0001914-L

Bring A Chair— Refreshments By Church—  
Terms- Cash— Personal Check Only If Known by Us- NO OUT OF STATE CHECKS.

CLIP & SAVE AD