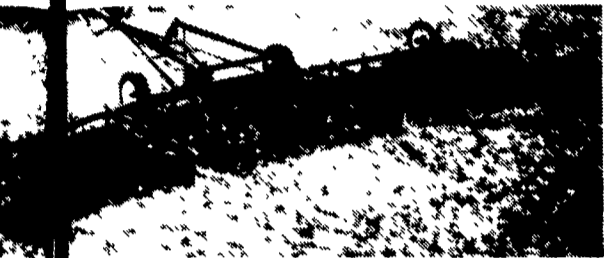


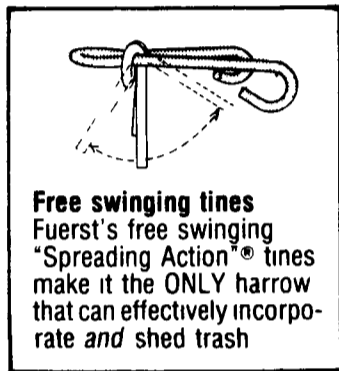
# It Won't Plug Up!

## Ridge and minimum till

The Fuerst harrow cleans ridge tops, creating excellent seedbed. Unique "Spreading Action"® tines hug the soil at faster speeds to shred and evenly spread no-till stalks in the spring.



believe harrow  
as a stalk  
adder, lifts and  
ers stalks and  
oes clear up the  
nd.  
er Bower--  
kville



**Free swinging tines**  
Fuerst's free swinging "Spreading Action"® tines make it the ONLY harrow that can effectively incorporate and shed trash

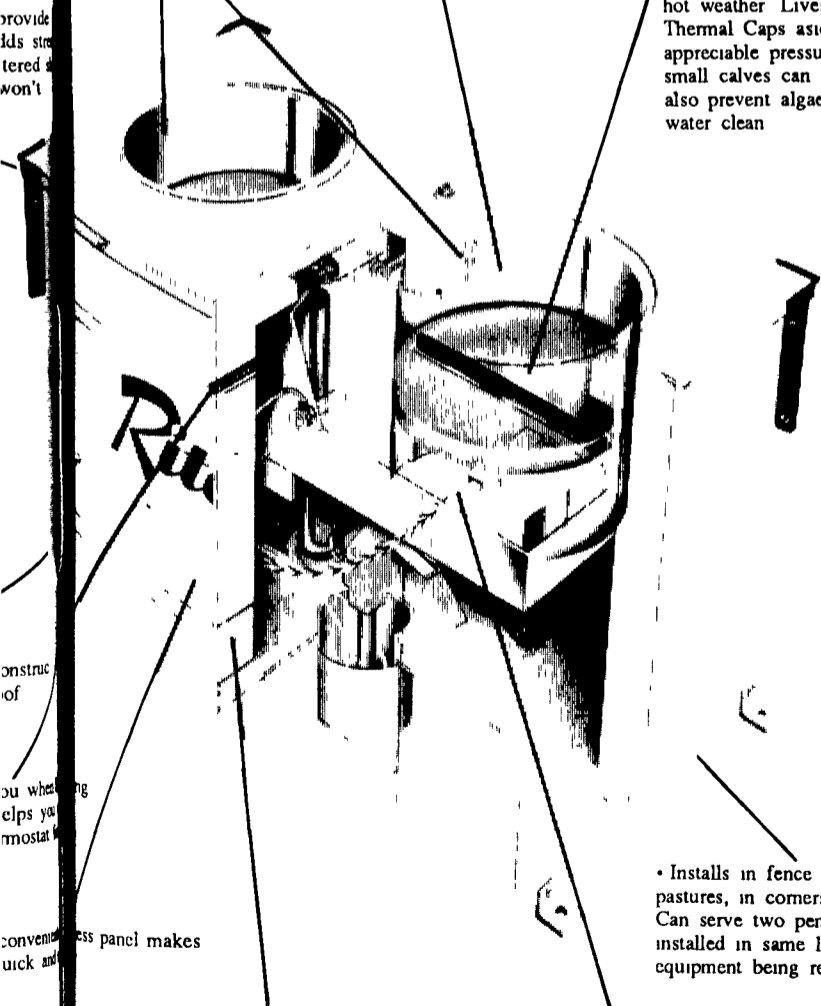
### Dozens of uses:

The harrow used behind a disc or cultivator, incorporates herbicides in one pass. Used alone, it covers broadcasted seed, renovates, maintains pastures and more. The harrow/cart (an optional harrow carrier as shown) follows tight turns, has folding wings for easy transport. Harrow and cart are available in 16 to 42 ft. widths.

Two design will water up to 5 head down cattle

• Deep drinking wells dip into big trough of fresh, clean water. Full-throated valve refills trough automatically on demand at rate of 15 gallons per minute. Cattle won't drink Challenger dry!

• Insulated, floating, removable Ritchie Thermal Cap in each well minimizes contact between water and air to prevent heat loss in cold weather and block out sunlight to keep water cool in hot weather. Livestock simply push Thermal Caps aside to drink. No appreciable pressure is required. Even small calves can drink. Thermal Caps also prevent algae from forming, keep water clean.



construction of

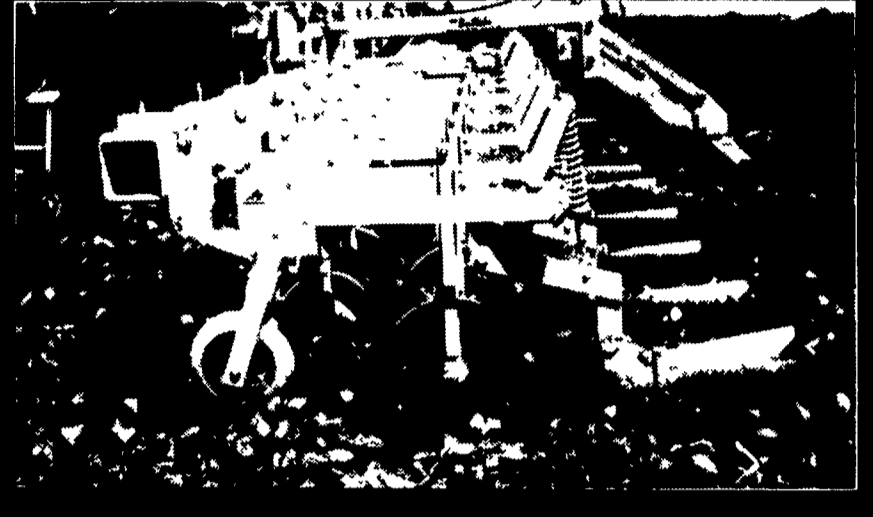
you when clips you most

convenient panel makes quick and

• Cabinet casing has foam insulation that's up to 3" thick. This extra thick insulation conserves heat in winter, keeps water cool and palatable in summer.

• Two 80-watt immersion heaters and a 36-watt supply line cable are all Challenger needs to keep water ice-free even in coldest weather. (Uses only pennies per day.)

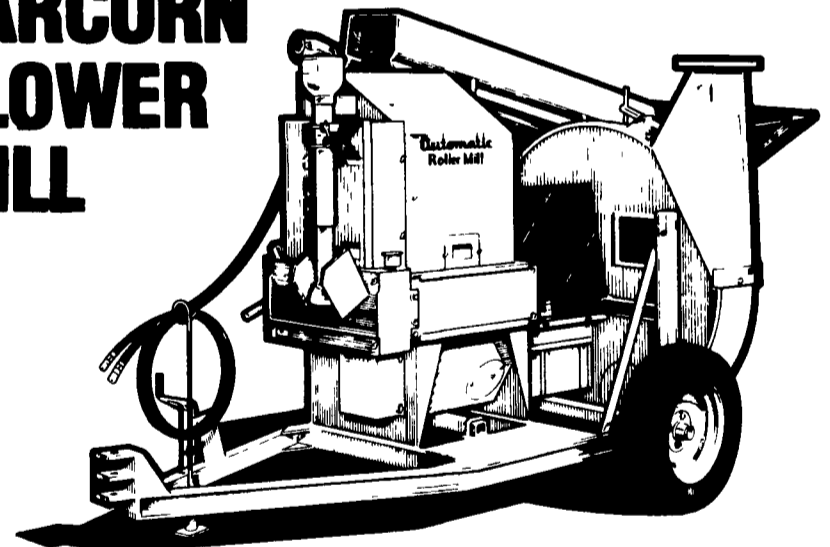
# Buffalo ALL-FLEX CULTIVATOR NO. 1 WEED KILLER



Buffalo is the first name in Conservation Tillage and the Buffalo All-Flex Cultivator is the No. 1 weed killer. Unique stabilizing disk gives positive depth control, row units flex to adapt to field contour. Use as regular cultivator, for ridging or ditching in 4, 6, 8 or 12 row units. Sweep spring trip available. Rugged construction for long, trouble-free service. The Buffalo All-Flex Cultivator from Fleischer Mfg. is the way to go!

## the one that keeps rolling when others quit!

# Automatic EARCORN BLOWER MILL



Automatic pioneered the development of the unique crusher unit which shells corn and shreds the cob ahead of the rollers which crack the kernels and reduce the cob further. No troublesome screens to change or slow down the capacity. It comes with 8-foot hydraulic intake auger and 54-inch blower. Also available with an 11-inch tilting discharge auger with 10-foot reach in place of the blower.

- **UNIQUE CRUSHER ROLLS** shell the corn, crush the cob ahead of the rolls, no screens to plug.
- **FATIGUE-PROOF DRIVE SHAFTS**, ground and polished.
- **CARBON STEEL ROLLS**, hardened to a 56 Rockwell "C", outperform other rolls in capacity and durability.
- **20-SPLINE**, 1 3/4-inch PTO shaft with shear pin protection.