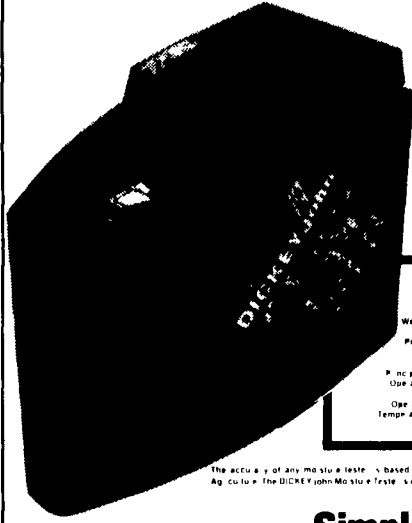


DICKEY-john DGMT Grain Moisture Tester



The DICKEY-john Grain Moisture Tester measures moisture content automatically. You don't have to preweigh the sample. There are no meters to read, no dials to set, and no thermometers to lose. As soon as you pour in the grain sample, the testing sequence begins. A digital readout is displayed when the proper weight of the sample has entered the test chamber. The readout is corrected for temperature at the touch of a pressure sensitive switch. Models are available with direct readouts for corn, soybeans or wheat, and adhesive conversion charts are provided for other grains.

SPECIFICATIONS	
Size	Repeatability
Weight	Display
Power	Language
Capacity of Cup	Weight
Operating Temperature	Temperature Correction

Simple, four-step operation

1 Place the tester on a steady level surface. Then lift the protective cover up and slide it down out of the way.

2 Use the sample cup to pour grain into the testing cell. Pour slowly and steadily taking about eight to ten seconds to empty the sample cup. A readout will appear automatically.

3 Wait at least fifteen seconds. Then press the temperature compensation switch for a direct readout of the moisture content of the grain listed on that switch. Refer to the appropriate chart for other grains.

4 Empty the tester by turning it over (if you should forget) to empty the test cell. The tester will shut itself off automatically after two minutes.

SPECIFICATIONS SUBJECT TO CHANGE WITHOUT NOTICE
PRINTED IN U.S.A.



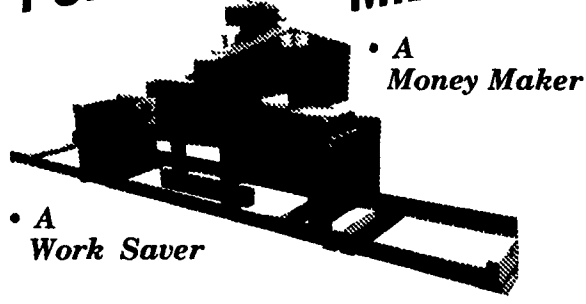
MODEL 872W WAGON GEAR



Capacity 16,000 pounds
 Axle Height 25 1/2"
 Tread Width 72"
 (Optional: 60" or 90")
 Tire Size 11L x 15
 Hub Bolts Six
 Adjustable tongue and long life tapered roller bearings are standard

See This Sawmill In Operation
 Penn State's Ag Progress Days
 at the R.J. Lee Exhibit

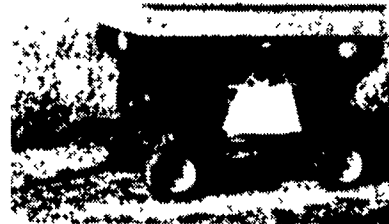
KASCO PORTABLE BANDSAW MILL



This rugged sawmill cuts boards any thickness from 1/4" to 9" • it will quarter saw • handles logs up to 24" diameter • cuts boards smooth and straight • Walnut, Oak, Cherry and other hardwoods are no problem to saw • saves you more usable lumber • low price makes this saw affordable for individual use.

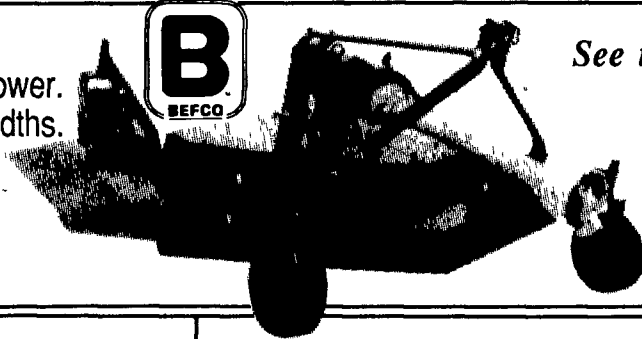


MODEL 220W GRAVITY WAGON



Width: 7' Length: 10'
 Bushel Capacity: 220+
 Single Door Width: 34 1/2"
 Chute Depth and Length: 8"x23"
 Overall Height: 95"
 Medium duty farm hauling

Solid, rugged design, versatile, inexpensive finishing mower. For tractors from 15 to 40 HP in 48", 60" and 72" working widths. BEFCO's THREE SPINDLE MOWER is ideally suited for parks, golf courses, athletic fields, highway maintenance and farming.



See the Entire Belco Line Of:
 Tillers
 3 Spindle Mowers
 Rotary Cutters
 Post Hole Diggers
 Fertilizer Spreaders
 Interrow Cultivators

McConnel PA 35 hedger Thoroughbred Design

The new McConnel PA35 has all the design features you need to make a great job of your hedges and grass verges:

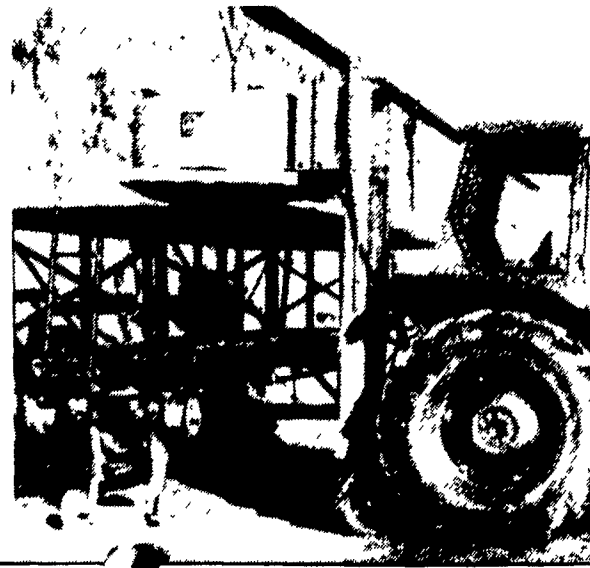
- **Interchangeable** left or right hand cut for convenience and safety
- **Three-point linkage** mounting for fast attachment and removal
- **Fully independent** hydraulics for powerful, consistent performance, all day, every day
- **Electric controls** for precise, effortless and instantaneous movement of the arms and flail head

All backed by years of McConnel know-how and engineering expertise



McConnel Forklifts Let The Wheels Take The Strain

- Models for 25 hp and up
- 6'6" to 10' lift height
- 2200 to 4400 lb. capacity
- Load bearing wheels allow more capacity on smaller tractors

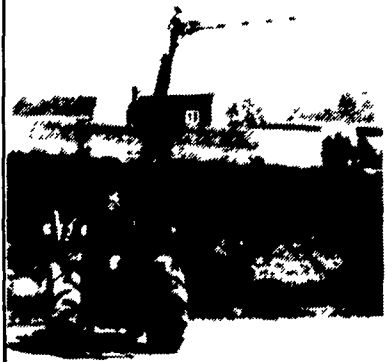


McConnel Mini-Trimmer

Bit Performance in a Small Package

3 Pt. Mounting Easy On And Off Sickle Bar By Hydraulic Motor.

- Cutting width — 4'
- Max Reach — Topping 11'4" from center line of tractor
- Max Height — Topping 10'2"
- Max Height — Siding 14'9"
- Reach Downward on 45° slope — 6'2"
- Machine Weight — 356 lbs.
- Minimum Recommended Tractor Weight — 1210 lbs
- Tractor Hydraulic Flow Required — 3.67 gal or more



McConnel Backhoes for your 17+ HP Compact Tractor



VISIT WITH US DURING AG PROGRESS DAYS



WESTERN PA MGR.
 FRANK WILBERT III
 P.O. Box 121
 Bakersburg, PA 15007
 412-443-3307

R.J. LEE, CO.

MANUFACTURERS REP
 RONALD REED
 RD 6, Box 108
 Shippensburg, PA 17257
 717-532-8297