



**BUSINESS NEWS...**



**ABS Is Recognized For Distinguished Service**

American Breeders Service, (ABS) DeForest, Wisconsin, was recently presented with the Distinguished Service Award by the Wisconsin FFA Association. The presentation was made during the 58th State FFA Convention in Green Lake, Wisconsin.

An engraved plaque inscribed "To American Breeders Service In Appreciation for Distinguished Service" was received by Dr.

Robert E. Walton, President and General Manager on behalf of ABS. Darren Kittleson, Mount Horeb, State FFA President, made the presentation during a special session of the three-day convention.

American Breeders Service, the nation's largest A.I. organization, has sponsored FFA and 4-H programs at state and national levels, for many years.

**Cassady Attends Agway School**

SYRACUSE, NY — Curt Cassady of Litzitz, joined over 200 other Agway farm enterprise and farm systems field staffers in Syracuse, NY, for a three-day farm enterprise school sponsored by Agway.

At the Agway Farm Research Center near Tully, NY, they observed the latest techniques and

equipment used in the management of high producing dairy herds. These include performance results of Agway's new naturally ventilated and insulated free-stall dairy barn, updates on new professional dairy equipment, use of forage preservatives, the latest in on-farm computers, and many subjects dealing with the nutritional well-being of livestock. Other new

farm technology was presented and explained.

Agway sponsors farm enterprise schools each summer for its field staff. They observe and learn about the latest innovations in farm management and technology which is passed on to farmers across the Northeast to help them farm more profitably.

**Unverferth Adds Grain Cart To Line**

A 475-bushel model is the newest addition to the line of heavy duty grain carts from Unverferth Manufacturing, Kalida, Ohio.

The new cart, Model GC4900, joins a popular selection of models with capacities from 335 to 600 bushels. The GC4900 offers the fast, complete unloading found in all Unverferth grain carts thanks to

its Slip Coat hopper coating, forward-folding 12" auger with adjustable damper, and sump-type pit.

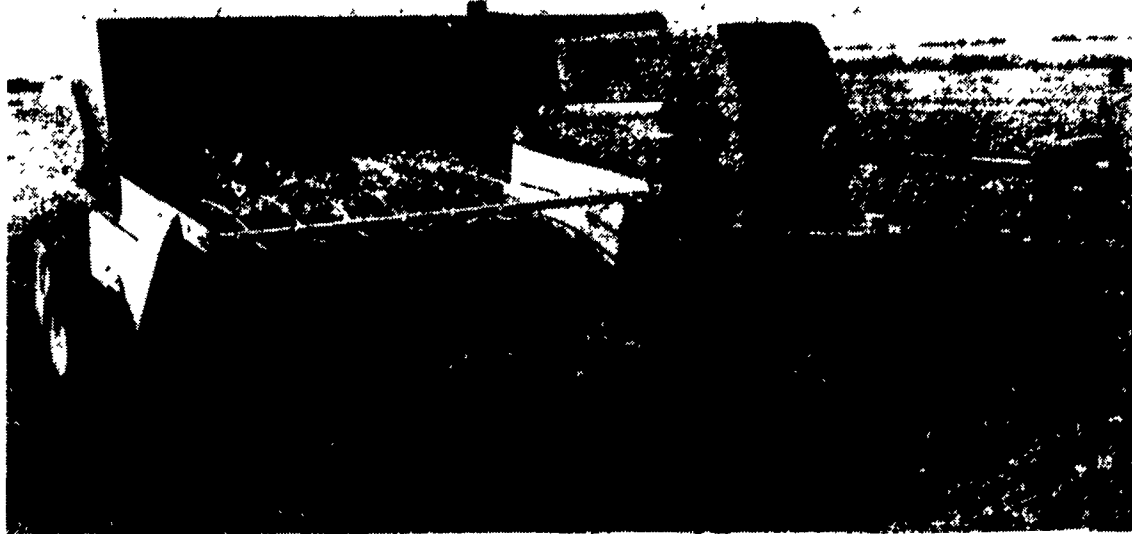
Unverferth grain carts feature center dump gate, hydraulic auger lock, interchangeable bolt-on axles with torque bars for easy conversion, shear-pin-equipped oscillating hitch, movable drop-

leg jack, precision-ground gears, and a drive line slip clutch. Unverferth engineers its carts for long life, and each unit is fully tested before it leaves the factory.

For literature, contact Unverferth Mfg. Co., Inc., P.O. Box 357, Kalida, OH 45853. Phone 800-322-6301 (419-532-3121). Telex 265026.



A 475-bushel model is the newest addition to the line of heavy duty grain carts from Unverferth Manufacturing, Kalida, Ohio.



THE JOHN DEERE 348 is one of four new rectangular balers with improved performance, reliability, ease of service and easier knotter adjustment. The 348, a high-capacity 14x18 baler, has a 93 SPM plungerhead, 30-inch stroke and 74 in. wide pickup.

**John Deere Introduces New Rectangular Balers**

John Deere has introduced four new rectangular balers with improved performance, reliability, ease of service and easier knotter adjustment.

The 8 Series balers are the 328 and 338, both with 80 SPM plungerhead, and the 348 and 468 and 93 SPM plungerhead (the 468 operates at 93-stroke plunger speed at 540 rpm for normal operation but can run as high as 100 SPM if conditions require). All four have a 30-inch stroke and 74 in. wide pickup.

The 328 has 104 teeth on four bars; the other three have 156 teeth

on six bars.

The 348 is a high-capacity 14x18 baler; the 468 has a 16x18 bale case with adjustable side doors, multi-lubrication, hydraulic bale tension and four-position feeder forks. In addition, the 468 has replaceable liners in the bottom of the bale case and in the pre-compression chamber of the auger housing for extended baler life, and the bale case has been reinforced for greater strength.

On all four 8 Series balers, the knotter has a larger-diameter needle lift shaft (on both twine and wire) for increased strength. The new split-design knotter frame enables easy removal to improve servicing of high-use balers. Other new features ensure ease of adjustment. Coil spring tension on the twine holder enables a wider range of adjustment and twine disk timing has been made easier.

Other improvements reduce the cost of repair; the billhook cam track, for instance, is now a separate hardened part.

The addition of a notch to the tucker finger assures accurate positioning of the twine on the billhook for every knot, improves

control of the twine for positive wiping action, and makes the knotter more dependable. Ball joint-style pull links assure easy and accurate adjustment.

A timing slot has been added to the bale case to make it easier to position the plungerhead accurately when timing the needles.

Features valued by hay farmers on earlier models have been retained, such as the equal-angle hitch, channel strippers with flanges to reduce tooth wear, an offset pickup to provide more usable area and keep tractor tires away from the windrow, a crank to adjust the pickup to accurate working height or for transport (hydraulic lift available), low-profile pickup to minimize lift and save leaves and short material, removable compressors that adjust to nine positions to match volume, an auger designed to reduce leaf loss and match incoming volume for high capacity, and a large feed opening that closes momentarily on compression strokes so each charge is precompressed before entering the bale chamber, resulting in uniform bale density.



**Badger Northland Combines Volume, Economy In Conveyor**

KAUKAUNA, WI — Built tough for maximum power and efficiency, the Badger BN7960 Bolt Conveyor has been specially designed for high volume, bulky feed delivery.

This heavy-duty belt conveyor features a 16" wide, high capacity design that allows it to move over 45,000 lbs. per hour. And a choice of three different belts - Smooth Surface for inclines of up to 10 degrees, Rough Textured for inclines of up to 20 degrees or Chevron for inclines of up to 35 degrees - make this Badger conveyor perfect for any type of operation. Each belt is PVC-coated to maintain flexibility and peak performance in all temperatures.

Economy is a big feature on the BN7960, with special designs built in to save your operation time and money over the life of the convey-

or. A drive unit with simple, double reduction design means low horsepower requirements of 1/2 to 5 hp depending on conveyor length. Also included on the conveyor are a trough system with greater strength and extra capacity and an idler unit which doesn't trap feed, reducing belt maintenance and increasing longevity.

These added "extras" are standard on the Badger BN7960 Belt Conveyor. Put them all together and they add up to an excellent choice for the conveying needs of any size operation. A specialized option package can also be created to suit specific conveying requirements.

For further information contact: Badger Northland, Inc., 1215 Hyland Avenue, P.O. Box 1215, Kaukauna, WI 54130-0912.