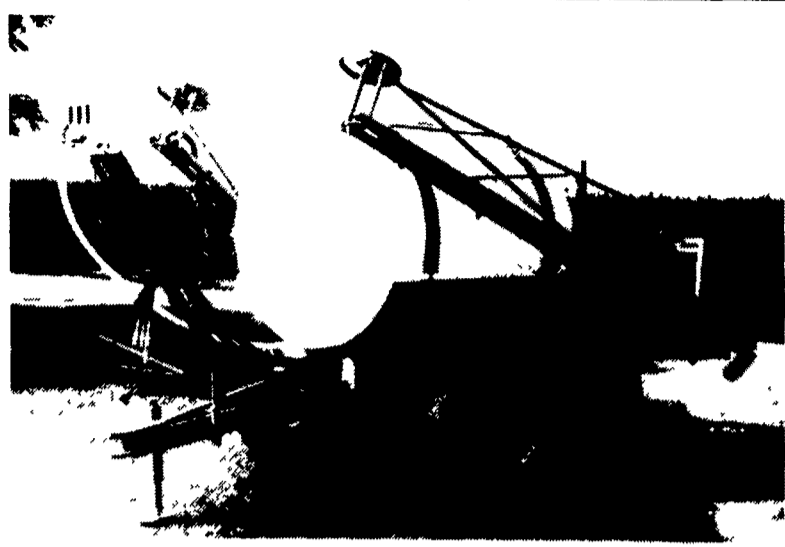


PAUL B. Zimmerman INC.

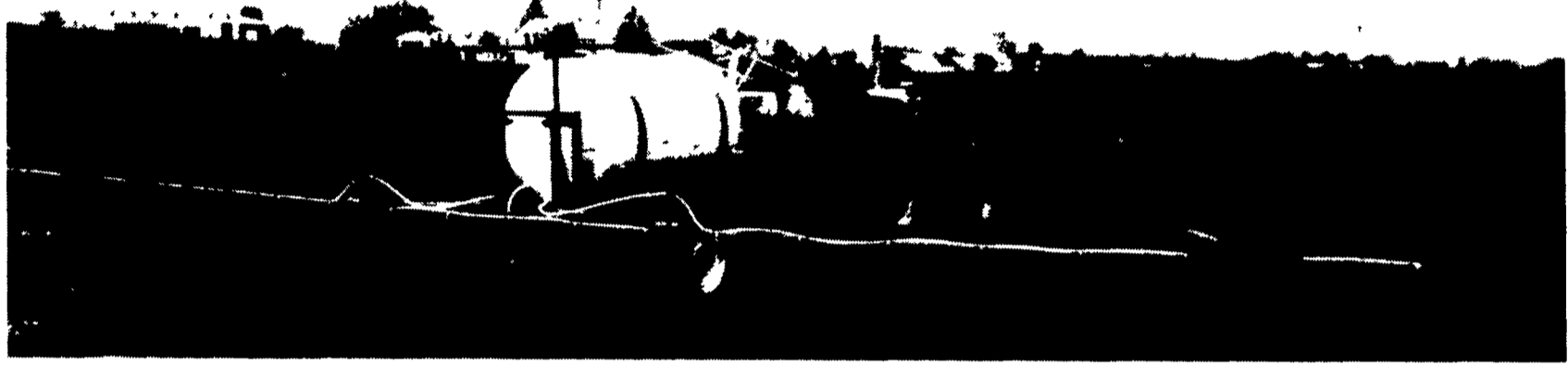
SPRAYING EQUIPMENT

200, 300 and 500 GALLON TRAILER SPRAYERS



STANDARD FEATURES ON TRAILER-TYPE SPRAYER

- All Welded Steel Main Frame
- Adjustable Width Wheel Spacing
- Hitch Jack
- High Crop Clearance
- Low Overall Height
- Poly Tank
- Selector Valve



RAVEN[®] POLY TANKS

25 To 1600 Gal. Vertical and Horizontal



ROUND BALE MOVERS

3-Point Single Prong

3-Point Double Prong

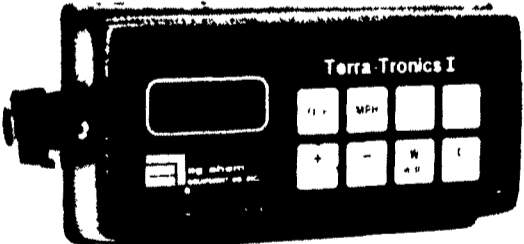
The Same Unit Can Be Used With One Prong For Center Of Bale Or Two Prongs For Under Bale.

2-Point

Front End Loader Forks

- Can be mounted on loader bucket in minutes
- No special attachment needed

TERRA-TRONICS I Electronic Monitor Measures Working Acres And Ground Speed



- Easy-to-see digital readout
- Easy-to-operate touch sensitive keys
- Easy-to-install
- Operates with any field implement requiring acre measurement - pulled, mounted, or self-propelled sprayers, combines, etc.

We Also Stock A Complete Line of **TeeJet** Sprayer Nozzles And Accessories

Hypro[®] Pumps And Accessories

- Sprayer Hose
- Ball Valves
- Nylon Fittings

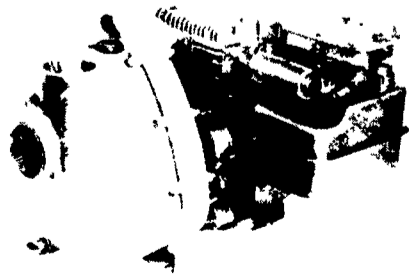
Pacer Self-Priming Centrifugal Pumps For Agriculture

- Features:**
- Self-priming to 20 feet (6.1 meters)
 - Total heads to 80 feet (24.4 meters)
 - Capacities to 166 U.S. GPM (628 liters per minute)

- Built in check valve
- Equipped with 2" female threaded connections, NPT

Ag Miser 3 HP

Ag Miser 5 HP



Visit Us During AG PROGRESS DAYS And See All This Equipment On Display
 Located On W. 9th Street