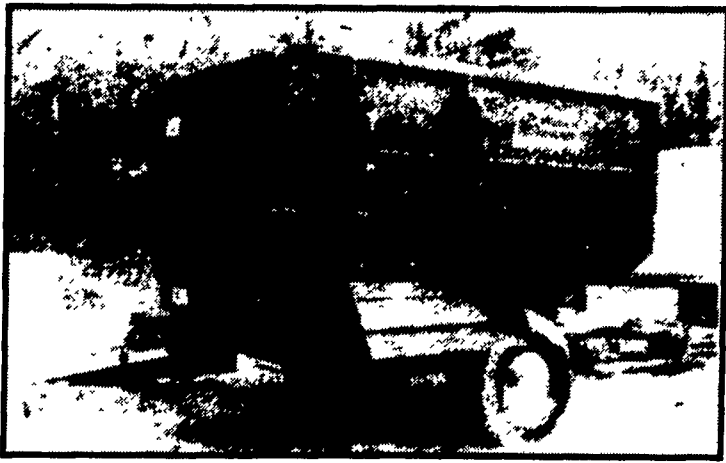


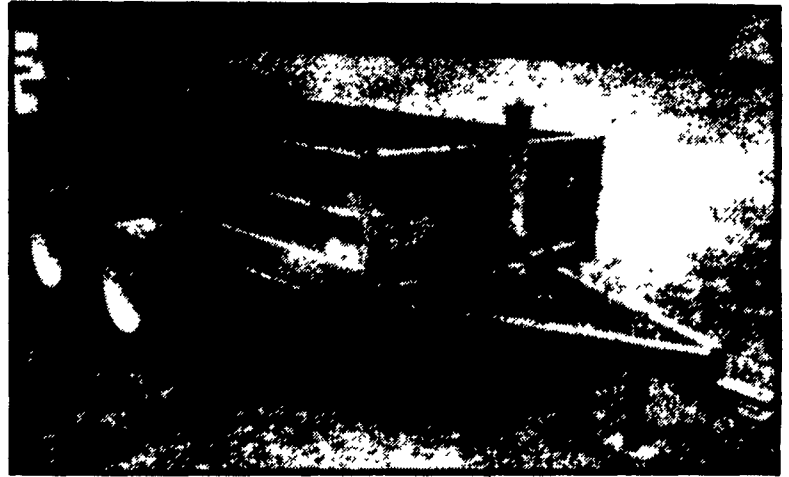
# STIRCO MIXER FEEDER



Since first introduced in June 1980 The Quick Mixer is feeding thousands of dairy and beef cattle every day. Its revolutionary rotar/auger mixer package is an engineering first. You get a faster, more even mix, no dead spots, takes less horsepower, eliminates numerous bearings, sprockets and chains, mixes all types of feeds and even waste materials and last but not least, less maintenance in time and dollars.

The Stirco Quick Mixer is made for today's farmer. Its ruggedness and simplicity is unmatched in the industry. If you are planning the purchase of a Mixer Feeder you owe it to yourself to look at the Stirco Feed Mixer.

# TANDEM HYDRAULIC DUMP TRAILER



No matter what the job is you can do it easier with a hydraulic operated dump trailer. Works off your tractor hydraulic system. Measures 5' wide x 10' long approx. 24" sides. Removable side plank for lower loading height.

**Rated For 7 Ton** Only one hose required for lifting. Weight of box lowers itself. Other sizes available.

## JOSEPH SWANTAK, INC.

Distributors

PH. 607/432-0891

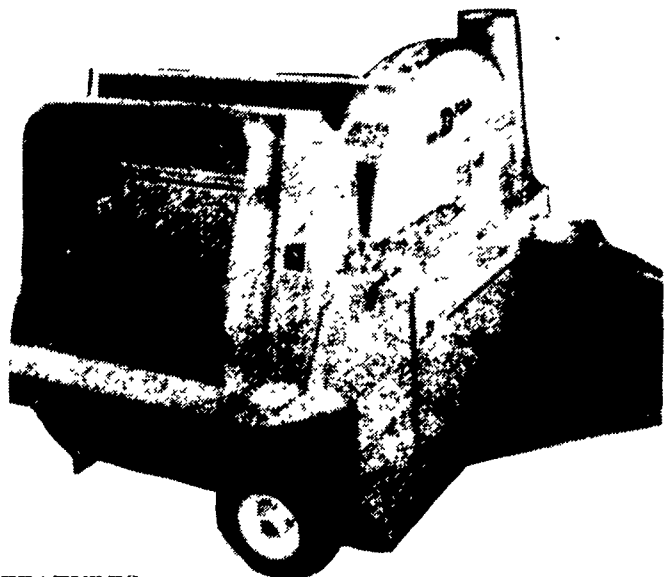
H.C. 64, Box 93, Delhi Stage

Oneonta, N.Y. 13820

Also Sales Representative For **DION** • FORAGE BOXES • FORAGE BLOWERS  
• RUNNING GEARS • MOBILE FEEDERS

Visit Us At AG PROGRESS DAYS Loc. At West 9th St.

# DION FORAGE BLOWER



### MAIN FEATURES:

- 8-BLADE GIANT 59" (150 cm) DIA. FAN
- 8-BLADE 32" (80 cm) DIA. INTERMEDIATE FAN
- ADJUSTABLE & ROTATING DRUM OUTLET
- LARGE SIZE WINDPROOF FORAGE HOPPER
- EFFICIENT HOPPER THROW-OUT CLUTCH SYSTEM
- NON-RETURN FLAP
- TWIN FEEDING AUGER SCREWS
- AIR-INTAKE CONTROLS
- HEAVY-DUTY POWER-TAKE-OFF
- DUAL WATER VALVE
- SYSTEM
- ONE-SCREW JACK WHEEL LIFTING SYSTEM
- POLE HEIGHT TURN-BUCKLE ADJUSTMENT
- HINGED PROTECTORS
- EASY ACCESS FAN COVER
- OUTLET REINFORCING BAND

# GRAZAWAGON



The Grazawagon is used for all forage crops and filled by a forage harvester with 'direct cut' or various ensiled feeds such as corn silage or haylage, or even just hay. Calves and young cattle can easily feed from the low pan... a distinct advantage over most other models.

### A PRIME MANAGEMENT TOOL

#### FEATURES:

- All Steel Construction
- Quick Hitch Tongue
- Low Pan For Easy Feeding Of Calves
- Slant Bar Sides To Prevent Feed Wastage

#### ALLOWS FOR:

1. More Productive Land Use
2. Higher Forage Intake
3. Close Observation & Heat Detection

#### SPECIFICATION

Length	20 ft.
Width	8 ft.
Height of Feeder	4 ft.
Height of Feeder from Ground	5 ft. 6 in.
Number of Feed Spaces	36
Wagon Capacity	8 ton
Tongue	Adjustable
Shipping Weight	Approx. 2,700 lbs.