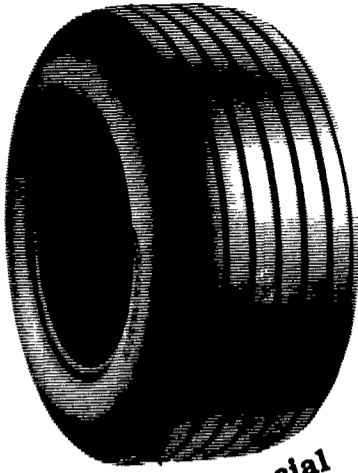


ARMSTRONG

FARM MUSCLE

See Us At Ag Progress Days

WAGON TIRES

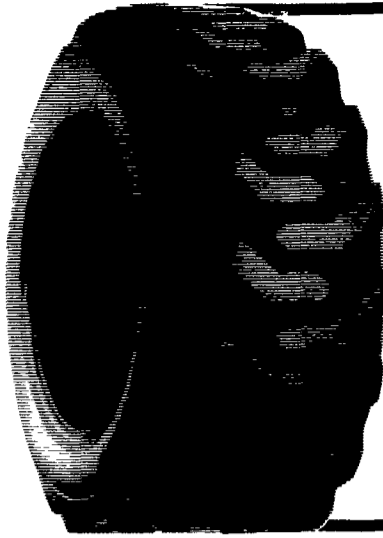


| | |
|-----------------------------|----------|
| 26 1200x12, 4 Ply | \$49.00 |
| 8 51x14, 6 Ply | \$41.00 |
| 9.5Lx14, 6 Ply | \$44.00 |
| 9 5Lx14, 8 Ply | \$49.50 |
| 9.5Lx15, 6 Ply | \$42.00 |
| 9.5Lx15, 8 Ply | \$44.00 |
| 11Lx14, 6 Ply | \$49.00 |
| 11Lx15, 6 Ply | \$43.00 |
| 11Lx15, 8 Ply | \$47.00 |
| 11Lx15, 10 Ply | \$60.00 |
| 1000x15, 8 Ply | \$60.00 |
| 11Lx15, 8 Ply Tubeless | \$50.00 |
| 11Lx16, 8 Ply | \$58.00 |
| 11Lx16, 10 Ply Tubeless | \$74.00 |
| 12 5Lx15, 10 Ply | \$75.00 |
| 12 5Lx16, 14 Ply | \$85.00 |
| 12 5Lx15, 12 Ply | \$87.00 |
| 14Lx16 1, 12 Ply | \$140.00 |
| 16 5Lx16 1, 10 Ply Tubeless | \$160.00 |
| 25x7 50x15, 4 Ply Tubeless | \$44.00 |
| 25x7 50x15, 6 Ply Tubeless | \$49.00 |
| 27x9 50x15, 4 Ply Tubeless | \$53.00 |
| 27x9 50x15, 6 Ply Tubeless | \$60.00 |
| 27x9.50x15, 8 Ply Tubeless | \$65.00 |
| 31x13 50x15, 6 Ply Tubeless | \$88.00 |
| 31x13 50x15, 8 Ply Tubeless | \$99.00 |

Ag Progress Special
\$5.00
OFF These Prices

• WAGON TIRES SHIPPED UPS - NO CHARGE! •

SKID LOADER TIRES



| | |
|--------------------------------|----------|
| 570x12, 4 Ply | \$40.00 |
| 23 850x12, 4 Ply | \$47.00 |
| 27 850x15, 4 Ply | \$51.00 |
| 27 850x15, 6 Ply | \$65.00 |
| 27 1050x15, 6 Ply | \$70.00 |
| 700x15, 6 Ply | \$65.00 |
| 750x15, 6 Ply | \$68.00 |
| 10-16 5, 6 Ply | \$80.00 |
| 12-16 5, 8 Ply | \$120.00 |
| Steel Shield 10-16 5, 6 Ply | \$95.00 |

Above Tires Shipped
To You FREE

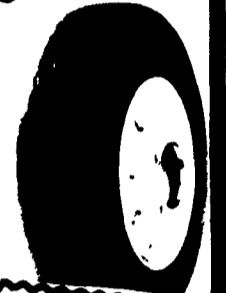
ARMSTRONG RADIAL TRUCK TIRES

\$20.00
OFF
During
Ag Progress
Days

ARMSTRONG RTX

| | |
|-------------------|----------|
| 9 00R-20, 14 Ply | \$210 |
| 1000R-20, 14 Ply | \$240.00 |
| 1000R-22, 14 Ply | \$260.00 |
| 11R-22 5, 14 Ply | \$270.00 |
| 11R-24 5, 14 Ply | \$280.00 |
| 11 00R-20, 16 Ply | \$290.00 |

Plus Taxes



ARMSTRONG STR TRACTION

| | |
|-------------------|----------|
| 1000R-20, 14 Ply | \$250.00 |
| 1000R-22, 14 Ply | \$265.00 |
| 11R-22 5, 14 Ply | \$275.00 |
| 11R-24 5, 14 Ply | \$285.00 |
| 11 00R-20, 16 Ply | \$300.00 |

Plus Taxes

\$20.00
OFF
During
Ag Progress
Days

ARMSTRONG STR-200

| | |
|------------------|----------|
| 1000R-20, 14 Ply | \$235.00 |
| 1000R-22, 14 Ply | \$250.00 |
| 11R-22 5, 14 Ply | \$260.00 |
| 11R-24 5, 14 Ply | \$270.00 |

Plus Taxes



ARMSTRONG LIGHT TRUCK RADIALS

| | |
|-----------------------|----------|
| 27x8 50Rx14, 6 Ply | \$85.00 |
| 30x9 50Rx15, 6 Ply | \$105.00 |
| 31x10 50Rx15, 6 Ply | \$112.00 |
| 32x11 50Rx15, 6 Ply | \$120.00 |
| 33x12 50Rx15, 6 Ply | \$130.00 |
| 33x12 50Rx16 5, 6 Ply | \$145.00 |

Plus Tax

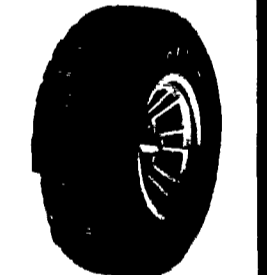
OUTLINED WHITE LETTERS

| | |
|--------------------|----------|
| 30x9 50R-15, 6 Ply | \$105.00 |
| 31x1050R-15, 6 Ply | \$115.00 |
| 33x1250R-15, 6 Ply | \$120.00 |

BLACKWALL

| | |
|-------------------|----------|
| 750R-16, 8 Ply | \$105.00 |
| 875R-16 5, 8 Ply | \$102.00 |
| 950R-16 5, 8 Ply | \$113.00 |
| 21585R-16, 8 Ply | \$105.00 |
| 23585R-16, 10 Ply | \$116.00 |
| 19575R-14, 6 Ply | \$85.00 |
| 21575R-15, 6 Ply | \$75.00 |
| 23575R-15, 6 Ply | \$85.00 |

Plus Taxes



ARMSTRONG

★ TUBELESS ★

| | |
|------------------|------------|
| 16 9x24, 8 Ply | \$265.00 |
| 16 9x24, 10 Ply | \$330.00 |
| 17 5Lx24, 6 Ply | \$245.00 |
| 17 5x24, 8 Ply | \$270.00 |
| 15 5x25, 12 Ply | \$310.00 |
| 17 5x25, 12 Ply | \$440.00 |
| 19 5Lx24, 10 Ply | \$390.00 |
| 19 5Lx24, 12 Ply | \$430.00 |
| 12Lx24, 12 Ply | \$500.00 |
| 20 5x25, 12 Ply | \$643.00 |
| 23 5x25, 12 Ply | \$960.00 |
| 23 5x25, 16 Ply | \$1,000.00 |

Loader- Dozer



ARMSTRONG

★ TUBE TYPE ★

| | |
|-----------------|-------------------|
| 14 9x24, 6 Ply | \$200.00 |
| 14 9x24, 8 Ply | \$220.00 |
| 16 9x24, 6 Ply | \$220.00 |
| 16 9x24, 8 Ply | \$235.00 |
| 16 9x24, 10 Ply | \$280.00 |
| 17 5Lx24, 8 Ply | \$240.00 |
| 16 9x28, 8 Ply | \$260.00 |
| 18 4x28, 10 Ply | \$340.00 |
| 20 5x25, 12 Ply | Call For Quote |
| 23 5x25, 16 Ply | \$225.00 |
| 1300x24, 10 Ply | \$245.00 |
| 1300x24, 12 Ply | \$255.00 |
| 1400x24, 10 Ply | \$280.00 |
| 1400x24, 12 Ply | \$280.00 |

ARMSTRONG



\$20.00
OFF
During
Ag Progress
Days

NORSEMAN "TRED LOC" OUTLINED WHITE LETTERS

Armstrong
All
Season

| | |
|--------------------|----------|
| 30x9 50R-15, 6 Ply | \$105.00 |
| 31x1050R-15, 6 Ply | \$115.00 |
| 33x1250R-15, 6 Ply | \$120.00 |

Plus Taxes

\$10.00 OFF ABOVE PRICES
During Ag Progress Days

Spring Loaded
TRUCK BUMPER
Special Price During
AG PROGRESS DAYS!



Central Warehouse
Mt. Joy, Pa.
717-653-1260

Serving Farmers In
Penna., New Jersey, Northern
Maryland and Delaware

Branch Warehouse
Northumberland, Pa.
717-473-3974

MUMMAU TIRE

For Service And Out-of-State, Call: 717-653-1260
In Pa., Call Toll Free: 1-800-222-1729

★ Hubs Avail.
For Wagons!

★ We
Stock
Wheels!

