



Livestock market and auction news

Shenandoah Valley Livestock

Harrisonburg, Va.

Saturday, July 25, 1987

Report supplied by auction

FEEDER CATTLE TREND: STEERS & BULLS STEADY; HEIFERS 3.00 LOWER. STEERS 300-500 LBS. M&L-1 68.00-85.00, 500-700 LBS. 63.00-74.00; 700-1000 LBS. 57.00-70.25. S-L&M&L-2 300-500 LBS. 62.00-81.00; 500-700 LBS. 56.00-67.00; 700-1000 LBS. 57.00-63.00; HOLSTEIN 300-1000 LBS. 49.00-63.50. FEEDER BULLS: M&L-1 300-500 LBS. 72.00-82.00; 500-700 LBS. 52.00-58.00; 700-800 LBS. 54.00-58.00; S-L&M&L-2 300-500 LBS. 62.00-66.00. HEIFERS: M&L-1 300-500 LBS. 65.00-70.00; 500-700 LBS. 61.00-68.00; 700-1000 LBS. 57.00-70.25; S-L&M&L-2 300-500 LBS. 62.00-66.00; 500-700 LBS. 63.00-66.00.

STOCK COWS: BEEF 490.00-570.00; DAIRY 400.00-460.00; BABY CALVES: SMALLS 45.00-80.00; LARGE 90.00-129.00.

SLAUGHTER CATTLE: HEIFERS CHOICE 2-4 63.00-65.00.

SLAUGHTER COWS TREND: STEADY, UTILITY & COMMERCIAL 2-4 37.00-44.00; CANNER & CUTTERS 1-3 35.00-41.00.

SLAUGHTER BULLS: 1&2 49.25-54.25.

LAMBS: TREND 6.00 LOWER. BLUE O HIGH CHOICE & PRIME 75.40; RED O CHOICE 72.25; FEEDER LAMBS CHOICE 75.00-76.00; SLAUGHTER EWES 13.50-25.75.

HOGS: SOWS 1-3 200-240 LBS. 58.25; SOWS 1-3 40.00-44.50; BOARS 35.00.

VEALS: CHOICE & PRIME 81.00-86.00; GOOD 75.00-79.00.

SLAUGHTER CALVES: GOOD & CHOICE 69.00-76.00.

Virginia Weekly Livestock

Thursday, July 30, 1987

WEEKLY REVIEW IN VIRGINIA MARKETS IN REVIEW; JULY 23-29, 1987. FEEDER STEERS AND HEIFERS IN VIRGINIA AUCTIONS WERE STEADY TO WEAK WHILE MIDWEST PRICES WERE FIRM TO \$1.00 HIGHER. SLAUGHTER CATTLE IN VIRGINIA AUCTIONS WERE STEADY TO \$1.00 LOWER WHILE THE MIDWEST WERE STEADY TO 50 CENT LOWER. BOXED BEEF CUT-OUT VALUE ON TUESDAY WAS \$100.02/CWT WHICH WAS \$2.77 LOWER THAN LAST WEEK. BEEF PRODUCTION WAS THE SAME AS THE PREVIOUS WEEK BUT

7 PERCENT BELOW A YEAR AGO AND AVERAGE LIVE WEIGHTS WERE 4 LBS. LIGHTER THAN LAST YEAR. COWS AND BULLS IN VIRGINIA AUCTIONS WERE STEADY TO \$1.00 LOWER WHILE THE MIDWEST WAS STEADY TO \$1.00 HIGHER. CALF AND VEAL PRICES IN VIRGINIA AUCTIONS WERE STEADY TO \$4.00 LOWER WHILE EAST COAST CARCASS PRICES WERE FIRM TO \$1.00 LOWER. SLAUGHTER LAST WEEK WAS THE SAME AS THE PREVIOUS WEEK, BUT 15% BELOW A YEAR AGO. LIVE WEIGHTS WERE THE SAME AS LAST WEEK. LAMB PRICES IN VIRGINIA AUCTIONS WERE AS MUCH AS \$6.00 LOWER. MIDWEST PRICES WERE \$2.00 LOWER AT THE START OF THE WEEK BUT HAD GAINED THEIR \$2.00 BACK BY THE END OF THE WEEK. EAST COAST CARCASS PRICES REMAINED STEADY. SLAUGHTER WAS THE SAME AS THE PREVIOUS WEEK BUT 15% BELOW A YEAR AGO. HOG PRICES AT VIRGINIA AUCTIONS WERE STEADY DURING THE WEEK AS MIDWEST PRICES REMAINED STEADY WITH FLUCTUATIONS. PORK PRODUCT PRICES WERE UNEVEN DURING THE WEEK. PORK PRODUCTION LAST WEEK WAS 2 PERCENT

ABOVE A WEEK AGO BUT AVERAGE LIVE WEIGHTS WERE 6 LBS HEAVIER THAN LAST YEAR. THE RICHMOND HOG MARKET LAST WEDNESDAY WITH BARROWS AND GILTS US 1-4, 200-240 LBS AT \$58.00-58.50 PER CWT. TOTAL RECEIPTS FOR THE WEEK 333 HEAD. THE SOUTHEAST VIRGINIA HOG MARKET CLOSED \$1.50 LOWER THAN LAST WEDNESDAY WITH BARROWS AND GILTS US 1-4, 200-240 LBS AT \$58.00-58.50 PER CWT. TOTAL RECEIPTS FOR THE WEEK 11,480 HEAD. AT HARRISONBURG, LYNCHBURG AND TAPPANNOCK HOG PRICES WERE STEADY TO 50 CENT LOWER THAN LAST WEDNESDAY AT \$56.00-59.50. SOWS RANGED \$38.00-41.00 AND BOARS \$30.00-32.00 PER CWT. SLAUGHTER STEERS & HEIFERS 2%; SLAUGHTER COWS 18%; SLAUGHTER BULLS 2%; SLAUGHTER CALVES AND VEALERS 4%; FEEDERS OVER 600 LBS 20% UNDER 600 LBS 54%.

PRICE RANGES FOR VIRGINIA AUCTIONS SLAUGHTER CATTLE CHOICE STEERS 2-3 1000-1150 LBS 62.25-63.50 CHOICE STEERS 2-3 1150-1300 LBS 63.25 CHOICE HEIFERS 2-3 900-1000 LBS 59.75-62.00 CHOICE HEIFERS 2-3 1000-1150 LBS 60.00-61.50 UTILITY & COMMERCIAL COWS 39.00-47.75 BULLS 1-2 900-1300 LBS 46.00-54.00; 1-2 1300-1600 LBS 48.00-59.00 1-2 1600 LBS & OVER 48.50-61.00 SLAUGHTER CALVES AND VEALERS VEALERS - HIGH CHOICE & PRIME 100-250 LBS 88.00-105.00 GOOD AND CHOICE 100-250 LBS 83.00-93.00 FEW 74.00 CALVES - GOOD & CHOICE 250-500 LB 88.00-99.00 FEW 65.00-75.00 SLAUGHTER LAMBS HIGH CHOICE & PRIME 95-125 LBS SPRING 71.00-75.40; BUCK 68.00 SLAUGHTER HOGS US 2-4 200-250 LBS 57.00-59.50 SOWS US 1-3 300-500 LBS 40.00-49.50; 500 LB & OVER 43.00-48.00 FEEDER CATTLE STEERS; MEDIUM 1 300-500 LBS 78.00-90.00 FEW 68.00 500-700 LBS 69.00-80.00 HEIFERS; MEDIUM 1 300-500 LBS 64.00-78.00 500-700 LBS 60.00-70.00.

Grantsville Livestock

Grantsville, Maryland Saturday, July 25, 1987

LARGE: 37-42; MEDIUM: 25-30. HOGS: TOP BARROWS & GILTS 61.00-63.00; HEAVY BUTCHER 55.00-62.50; LIGHT BUTCHER 42.00-60.00; BUTCHER SOWS 38.50-47.50; FEEDER SHOATS 20.00-53.00

VEAL: GOOD 70.00-87.50; STANDARD 60.00-68.00; UTILITY 48.00-58.00; BULL 90.00-112.00.

SHEEP & LAMBS: GOOD 68.50-73.00; UTILITY 58.00-65.00.

SLAUGHTER CATTLE: STEERS GOOD 59.00-64.50; STANDARD 55.00-58.00; UTILITY 45.00-50.00.

HEIFERS: GOOD 56.50-61.75; STANDARD 52.00-54.00; UTILITY 35.00-48.00.

COWS: COMMERCIAL 42.00-49.50; UTILITY 40.00-41.00; CANNER AND CUTTER 35.00-38.00.

BULLS: COMMERCIAL & GOOD 50.00-61.50; CUTTER & UTILITY 42.00-48.00.

STOCK-FEEDER CATTLE: (YEARLING STEERS) GOOD 60.00-65.00; MEDIUM 45.00-55.00.

STEER CALVES: GOOD 65.00-70.00; MEDIUM 48.00-60.00.

HEIFER CALVES: GOOD 55.00-65.00; MEDIUM 40.00-50.00.

Jersey Shore Livestock Market, Inc.

Auction every Thursday at 4:00 p.m.

Jersey Shore, Pa.

Report supplied by Auction Thursday, July 30, 1987

RETURN TO FARM CALVES 85.00-119.00.

GOOD VEAL 75.00-85.00. COMMON VEAL 55.00-74.00. CHOICE STEERS 63.00-67.00. GOOD STEERS 58.00-62.00. COMMON STEERS 49.00-57.00. COMMERCIAL COWS 44.00-49.50. CANNERS-CUTTERS 38.00-46.00. SHELLS 29.00-37.00. CHOICE HEIFERS 59.00-63.00. GOOD HEIFERS 54.00-61.00. COMMON HEIFERS 43.00-53.00. GOOD FEEDERS 60.00-69.00. COMMON FEEDERS 42.00-59.00. BULLS 44.00-58.25. GOOD HOGS 54.00-59.85. ROUGHS 36.50.

York County Livestock Sales Ltd.

P.O. BOX 243 • FAWN GROVE, PA 17321 (717) 993-2564

York County's Only Livestock Auction On PA Route #24 between Stewartstown and New Park

All Kinds of Livestock Sold on Commission GWALTNEY OF SMITHFIELD Open Every Monday - Hogs - 6:00 a.m. - 12 noon Auction - 7:00 p.m. - 7

Buyers - Livestock Producers - Farmers We Need & Appreciate Your Patronage

Martin Heaps, Mgr. 717-382-4725

Stan & Mary Nagle - Owners Home Phone: (215) 566-3239

SPECIAL NOTICE

of

Vintage Sales Stables Inc.

of Paradise, PA

Will discontinue hog auction every Saturday after August 15, 1987, 'til further notice.

For future auction day and time, contact:

Vintage Sales Stables, Inc.

L. Robert Frame, Manager 717-768-8204

DID ANYBODY EVER TELL YOU YOU'RE FULL OF...

Nobody has to tell you. When your lagoon is full of what seems to be immovable solids, you'll know. Your next job is to call US Agri-Systems. You'll find people who have the knowledge and experience as well

as the equipment to handle your manure management problems.

At US Agri-Systems, you'll find ability. The ability to find the right solutions to your problems. Call them toll free 1-800-222-2948.

CRIPPLED AND DISABLED

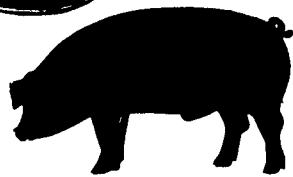
Cows, Steers & Bulls For Slaughter Under USDA Inspection

Call Wayne Taylor

717-866-6289
215-286-9400

Lebanon, Berks, Lancaster & Chester Counties

Gwaltney of SMITHFIELD, LTD.



RECEIVING HOGS: LANCASTER COUNTY FARMERS

MONDAYS: McCoy's Branch Office, Bareville
WEDNESDAYS: (Next to Bawells Butcher Shop)
& FRIDAYS: on Butler Rd. 717-656-9668

TUESDAYS: B & R Cattle
THURSDAYS: Marietta 717-426-3258

YORK COUNTY FARMERS

MONDAYS: Stewartstown 717-993-2564

TUESDAYS: Thomasville 717-792-2248 or 9836

Contact for information:

Ed Herrmann, 717-284-3203
or Charlie Kauffman, 215-593-5674
Future forward contracts available

KING'S AUCTION KIRKWOOD

Hay, Straw and Grain Auction EVERY TUESDAY 12:00

Located Rt. 472.5 miles south of Quarryville or 6 miles north of Oxford corner of Rt. 472 and Noble Road at Rouse Tobacco Station.

Lloyd H. Kreider, Auctioneer AU-000513L

No out of state checks ALL TRUCKERS AND FARMERS WELCOME

HAY & STRAW SALE

12:00 Noon Every Wednesday Westend of Avondale at the intersection of Baltimore Pike and Route 41.

Harvey Z. Martin 215-268-3604 (Office) 215-445-5303 (Residence)

SWINE PRODUCTION SALES AND SERVICE

Feeding Programs And Services To Meet Your Individual Needs

Computerized Record Keeping System

Grain Purchasing And Exchange



Supplying Farm Fresh Feeder Pigs

Marketing and Hedging Services

Marketing of Genesis Breeding Stock

Developing Individual Financial Programs

Quality Products And Services - Working For YOU

419 West High Street Elizabethtown, PA 17022

Elizabethtown (717) 367-1525

PA Toll Free 1-800-468-5524

Shippensburg (717) 532-7845

TIMBER '87

See the East's Finest Display of these Products:

SAWMILL EQUIPMENT • TRUCKS • TRAILERS
PALLET MILL EQUIPMENT • HYDRAULICS
SAFETY CLOTHING
SECONDARY PROCESSING EQUIPMENT
and more!

AUGUST 7-8, 1987
Bloomsburg Fairgrounds
Bloomsburg, PA
(EXIT 34 INTERSTATE 80)

For further information contact HLMA of PA • (717) 652-0344