

35

**TRUCKS AND TRAILERS**

1982 horse trailer, 20' gooseneck, \$2,000 215-267-7311 after 8 p.m.

Professionally rebuilt Chevy motors. 454, 427, 366 & 350 truck & car. Also high performance 427, 350 & 327. **717-762-7940**

**YES!! ENGLE FORD DOES MAKE IT EASIER!!**  
Over 100 New & Used Trucks, Vans & 4x4's

- 86 Dodge Caravan, All Power Options
- 86 Ford F150 Pickup, V8, AOD, PS, PB, AC, XLT Lariat, Loaded, 1 Owner
- 85 Ford Ranger 4x4 Pickup, V6, 5 spd., PS, PB, 2 Tone, Real Sharp
- 85 Ford Bronco XLT, Air
- 85 Jeep CJ 74cl, 6Cyl, 4 Spd, PS, PB, Towner, only 25,000 miles
- 85 Ford Club Wagon Van V8, AOD, PS, PB, AC, Power Windows and Locks, Cruise Control, Tilt Wheel, 5 Pass., Only 26,000 Miles
- 84 Chev Suburban 4x4
- 79 Ford LN 7000 Diesel, 5 Spd, 2 Spd. Axle, Cube Body, Heavy Hauler
- 78 Ford LN 8000, Cab & Chassis, 3208 Dsl, 5 Spd., 2 Spd. Axle, Low Miles

**ENGLE FORD, INC.**  
Rt. 147 North  
Millersburg, PA 17061  
In PA The Call's On Us 1-800-242-8075  
Out of State Call 1-717-692-4841

**TRAILERS**

**UTILITY**  
Single Axle, 2" Flooring  
3500 G.V.W., Tilt Bed,  
Gates + \$150  
5x8 .....\$675  
5x10 .....\$700  
6 1/2 x10.....\$750  
6 1/2 x12.....\$950

**GOOSENECK**  
7x20 .....\$2,500  
8x20 .....\$3,500  
(12,000 G.V.W.)  
8x24 .....\$3,500  
8x28 .....\$4,300  
(18,000 G.V.W.)

**UTILITY**  
Double Axle, 2"  
Flooring, 7000 G.V.W.,  
Electric Brakes,  
Landscape Gates  
Included  
6 1/2 x12.....\$1,500  
6 1/2 x14.....\$1,650  
6 1/2 x16.....\$1,750  
7x18 .....\$2,000  
7x20 .....\$2,400  
(12,000 G.V.W.)

**HORSE TRAILERS**  
Full Size "Deluxe",  
Matting And Carpeting,  
Steel Curtains  
Side Windows & Vents  
Elec. Brakes  
10' .....\$3,500

**CAR CARRIERS - ALL PURPOSE**  
6 1/2 x16.....\$1,700  
7x18 .....\$1,900

**LIVESTOCK TRAILERS**  
Features: 7 Ft., Tall,  
7 Ft. Wide, Escape  
Gate, Wood Panelling,  
Brakes On Both Axles,  
Center Divided  
(Removable), Swing/  
Slide Gate,  
Heavy Duty  
Gooseneck  
16 ft. ....\$3,900  
20 Ft. ....\$4,750  
24 Ft. ....\$6,450  
Utility, 10 Ft. ....\$2,400  
12 Ft. ....\$2,500  
16 Ft. ....\$2,860

**CONSTRUCTION**  
Double Axle,  
2" Flooring  
Electric Brakes,  
Loading Ramps,  
12,000 G.V.W.  
6 1/2 x16.....\$2,200  
7x18 .....\$2,400

**TRUCKS - NEW & USED**  
1985 Chevy Dump  
Truck, Contractor  
Sides, 10,000 GVW,  
never  
tilted .....\$15,000  
1981 GMC Dump Truck,  
Contractor Sides,  
10,000 GVW, New  
Bed, Low  
Mileage .....\$9,000

**ACCESSORIES**  
Hitches, Hitch And  
Brake Control  
Installation  
Electric Brake Controls  
Pintle Hitches  
Hitch Balls  
Truck Bodies  
Chains & Binders  
**CONSTRUCTION DECK OVER**  
8x20 (2 Axle)....\$2,950  
(12,000 G.V.W.)  
8x20 (3 Axle) ...\$3,400  
(18,000 G.V.W.)  
8x24 (3 Axle) ...\$3,800  
(18,000 G.V.W.)  
3x24 (4 Axle) ...\$4,400  
(24,000 G.V.W.)

**CHRISTMAS TREE PLANTER**  
Heavy Duty Commercial Unit Automatically Plants  
1000 Trees Per Hour 3" or 18". Price Adjustable  
Spacing 2 Ft. to 12 Ft. Now In Stock \$1,750

**RINGO HILL FARMS**  
Pleasant Valley Rd., Quakertown, PA 18951  
**215-346-7340**

80 Chevy C-30, 350, 4-speed, PS, PB, w/11' aluminum dump body, removable grain sides. 215-670-1503.

1985 20' Big Valley Gooseneck trailer, excellent condition, \$3,000. 301-371-6898.

1975 Mack, 237 engine w/wet line & 1972 28' Hill aluminum dump trailer. 215-689-9141

1975 Ford F350, 4WD, rebuilt engine, body fair, \$2,000. Sussex Co., NJ. 201-827-7555.

1972 Ford F600 Hay truck, 16 foot bed, 21,000 gross, two speed rear, 460 engine, good condition, \$2400. Cumberland Co., 717-776-7858.

1975 Ford "C" Model truck with excellent 3,250 gallon Porterville stainless tank \$6,400 or Best Offer 814-362-3482

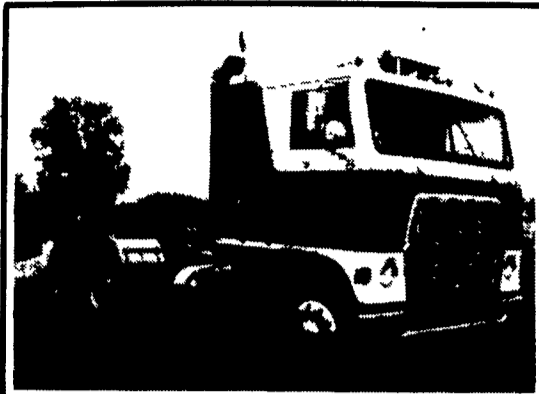
**FOR SALE**  
1981 Used Barrett 45' all aluminum cattle pot, excellent condition  
**802-728-4421**

**18 OZ. BLACK NYLON CANVAS**  
5' drop, steel lid at 3', 46'8" SIN, 18' finish width, reinforced grom nose, grom on 30" CTRS, square nose, 42' box rear reinforcement, brand new.  
**215-267-5688.**

40' Flatbed trailer, spread axle, needs floor, \$1500 cash GMC V6 478M engine w/new rings, bearings, reconditioned heads, \$900 cash 717-862-3466

1977 Int 1700 Loadstar D170 engine, 30,000 GVW, 18' dump stake bed, good condition, 200,000 miles \$5,700 Call Bob days 717-599-5656, nights 717-732-5916

1975 Int. 1950 Cat, 3208 Dsl., 5&2, air brakes, 33,000 GVW, (2) Int. 1977, 1800, 5&2, p steering, air brakes, 446 V8, 32,000 GVW 301-877-9889



1974 Ford W9000 350 Cummins, S.C., 13 spd., PS, AC, 10.00x22 radial tires, aluminum Budd wheels, wet line, aluminum cab, low mileage tractor (380,000 miles)  
**\*7,500 or Best Offer 215-273-3211**



**1986 FORD F250 XLT LARIAT**  
8600 GVW, 6.9 Diesel, AT, PS, PB, A/C, PW, PL  
LIKE NEW, Only 11,000 Miles

**FOUR WAY AUTO SALES**  
P.O. Box 444, R.D. #3  
New Holland, PA 17557  
**(717) 354-3199**



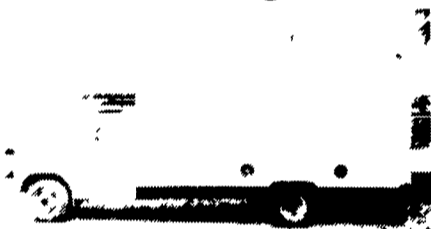
**Over 400 New and Used Trucks In Stock For Immediate Delivery**

1984 Chev High Cube



12 Ft. Alum. Body, V8, AT, 50,000 Miles, Stock No. 7328A  
Was \$9,995 **Now \$7,995**

1983 Ford High Cube



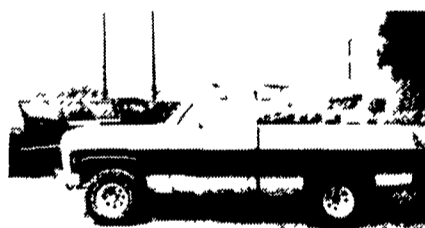
12 Ft. Alum. Body, V8, At, Stock No. 9356  
Was \$4,995 **NOW \$3,995**

1978 Ford High Cube



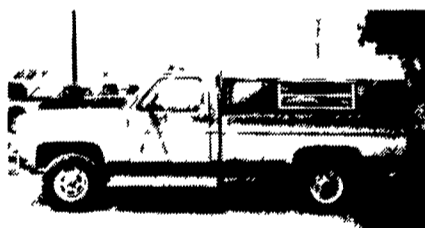
14 Ft. Fiberglass, V8, At, Stock No. 6286A  
Was \$3,995 **NOW \$2,795**

1977 Chev 4x4



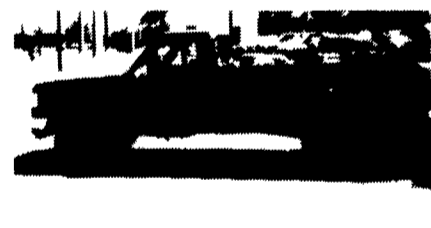
Bonanza, V8, At, Short Bed Stock No. 7710B  
Was \$3,995 **NOW \$2,995**

1978 Chev 4x4



K20, V8, AT, 69,000 Miles, Stock No. 7425A  
Was \$4,995 **NOW \$3,995**

1976 Ford 4x4



F-150 Step Side, V8, 4 Spd., 55,000 Miles Stock No. 7868A  
Was \$3,895 **NOW \$2,895**

New 1988 Chev Dump



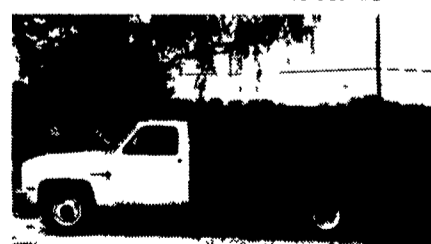
1 Ton V8, 4 Spd., w/8 Ft. Dump Body Stock No. 7337

EL CAMINO



1987 Is the last year for this All American Truck  
**6 In Stock**

1987 Chev Stake



1 Ton V8, 4 Spd w/10 Ft. Stake Body Stock No. 7347

**NOBODY BUT NOBODY UNDERSELLS...**

**LARRY MURPHY CHEVROLET**  
(TRUCK CENTER)  
1 Mile South of Park City, Old Harrisburg Pike, Lancaster, PA  
**717-397-0601**