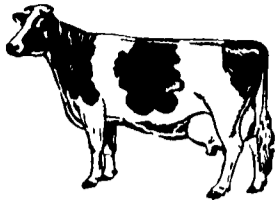


Major Dairy Sales And Dispersals Nationwide



Reports from two sales for the week of July 23 to 29 averaged \$1,201 on 134 head. The sales were held in New York and Wisconsin. The top prices at the sales were \$2,500 and \$3,500. The following is a brief look at the results of these sales.

JERSEY

The 11TH YANKEE SYNDICATE SALE held in New York averaged \$1,007 on 43 head.

Topping the sale on a bid of \$2,500 was a bred heifer sired by Top Brass. She will freshen in early September to Yankee F W Dozer.

Her dam, sired by Ethan Allen and classified VG-86, produced an average on two lactations of 14,035 milk and 561 fat. The sec-

ond dam, EX-91, has a top record of 15,250 milk and 661 fat.

The second high price of \$2,000 came on a March 1986 calf sired by Top Brass. Her dam, sired by Brave Berry, produced a 2-year-old record of 15,210 milk and 653 fat.

The sale average improved by more than \$400 from 1986.

Larry Benson auctioneered the sale which was managed by the Yankee Syndicate.

HOLSTEIN

The HOWARD LEHNER COMPLETE DISPERSAL held in Wisconsin averaged \$1,395 on 91 lots.

Topping the sale on a bid of \$3,500 was an EX-90 5-year-old cow sired by Sexation. She completed a top lactation of 21,512

NATIONAL DAIRY COW SALE INDEX

©1987 Lancaster Farming Newspaper

This sale index can help dairymen place a value on the dairy cows in their own herds. Breed organization sales and private dispersal sales reported in Lancaster Farming are included in the dollar averages.

	Ayrshire	Brown Swiss	Guernsey	Jersey
Year to date:				
Nation	925	1213	1087	1059
Pennsylvania	720	623	539	904
Four previous weeks:				
Nation	—	4980	755	2059
Four previous weeks				
+/- year to date:	—	3767 higher	332 lower	1090 higher
	Holstein	Red and White	Milking Shorthorn	
Year to date:				
Nation	2098	1923	852	
Pennsylvania	1919	2837	744	
Four previous weeks:				
Nation	3094	—	—	
Four previous weeks				
+/- year to date:	996 higher	—	—	

Chester Manure Day Set For Aug. 13

You are invited to attend a manure management field day at Art and Duane Hershey's Farm, Cochranville. Visit with the Hershey's about the process of obtaining funds for nutrient management work on your farm, tour their new manure and waste water storage and handling facilities, and bring a water sample for a free nitrate test by the mobile nutrient management van. Also, here the latest on soil nitrogen testing, and the Chester County test plot on nitrogen use in corn.

You can call the Chester County Extension Office, or the Octorara Young Farmers Office for a lunch reservation.

The mobile van can test four manure samples at a time. If you are interested in having a manure sample from your farm analysed, please call the office. Free testing will be on a first come basis.

Program sponsored by: Octorara Young Farmers Association; Chester County Extension Service.

Feel free to attend this meeting, even if you are not in the specified Chesapeake Bay watersheds, or a member of the young farmers association. The principles of proper manure management apply to all farms!

milk and 835 fat in 346 days. Her dam, classified Excellent and sired by Rocby Ivanhoe Dina Charm, produced a best effort of 23,920 milk and 829 fat.

A 4 year old sired by Oak Hill Ranch Kit sold for the second high price of \$2,700. She registered a top lactation of 18,548 milk and 646 fat.

Keith Stump served as auctioneer for the sale and Alvin Piper Associates managed the sale.

When:
Thursday, August 13, 1987
Time:
10:30 AM- Noon

Schedule: 10:15-10:30-
10:30-11:00-
11:00-11:15-
11:15-11:25-
11:25-11:35-
11:35-11:45-
11:45-noon-
Noon-

Drop off your water sample to be tested by the mobile nutrient lab. Tour of Hershey's new manure and wastewater handling system. (Duane & Art Hershey) Tour of DER's mobile nutrient lab and an explanation of water and manure testing procedures. New Manure management manual, how it can help you on the farm. Chester County's corn nitrogen use test plot, and the latest on soil nitrogen testing. Update on Chesapeake Bay Funding available to you. Comments by the Soil Conservation Service LUNCH- will be provided free of charge- you must call for a lunch reservation

New Horse Barn Readied For Fair

MEYERSDALE — A new horse barn containing an indoor ring and more than 60 stalls will be ready for occupancy when the Somerset County Fair opens here Aug. 23 to 29.

The facility has been donated by the Robert W. Decker family of Garret, long-time exhibitors and breeders of Belgian horses.

The central, clear-span ring measures 190-by-60 feet, with stalls along the perimeter. Halter and performance classes will be judged in the new structure and, if necessary during inclement weather, the horse pulling contest could be held inside, according to fair Manager Emerson Suder. Unsure of the seating capacity that might be needed, Suder said bleachers will not be installed until next year. Eventually, the new building will

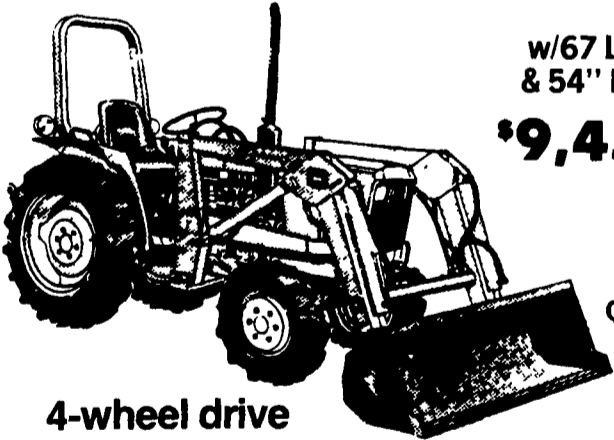
replace the current horse barn which Suder described as an older structure.

Yearly, some 250 horses are entered at the Fair, the manager noted.

In other physical changes for the 1987 Fair, Suder said themain exhibit hall is being refurbished and a new floor design being installed. Instead of straight shelving on which to display exhibits, cubicles and block spaces are being arranged for more eye-appealing ordering of entries, he indicated.

All commercial exhibit space inside and outside will be full, Suder said of the upcoming Fair. Entries have been accepted, he added, for 120 market steers, 165 market hogs, 121 market lambs, 188 dairy cattle, 250 horses plus goats and rabbits.

JOHN DEERE 750



w/67 Loader
& 54" Bucket
\$9,450⁰⁰

Limited
Quantities

4-wheel drive

Fuel-efficient diesel engine
Attachments for versatility

8 1/2 % Financing Available

Nothing Runs Like a Deere®



717-665-2407

ELM, PA.

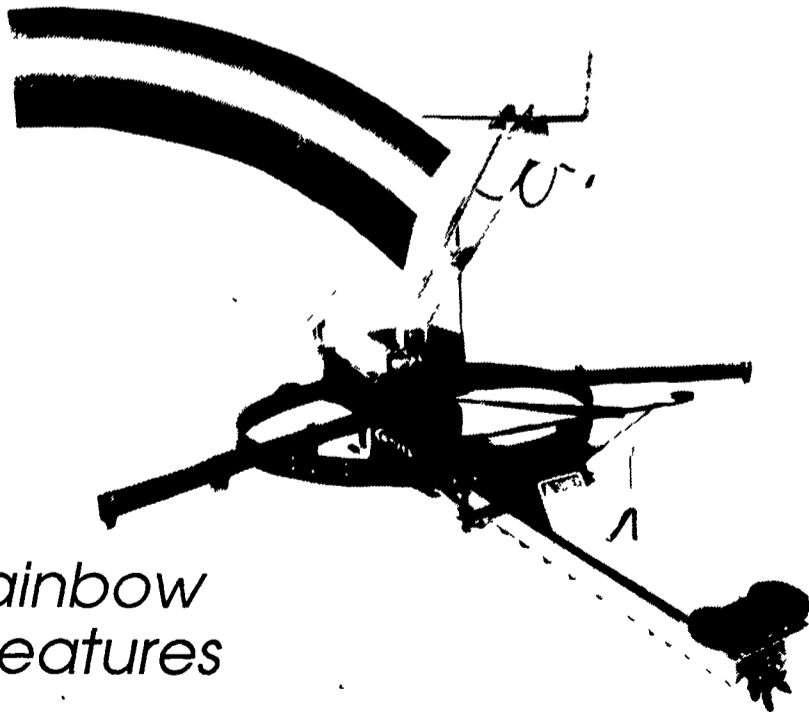
Bomberger's

Hours: Mon., Thurs., Fri., til 9:00; Tues. & Wed. til 6:00; Sat. til 5:00



**Livestock
Systems**

NEW VOLUMASTER™ Silage Distributor Unloader



*A Rainbow
Of Features*

The Volumaster silage distributor/unloader offers all the best performance features in one machine. Only the Volumaster system uniformly packs more silage in and gets it out faster than ever. Plus, all components are easy-to-get-at for convenient service, and are designed to last longer with less maintenance.

WE SERVICE WHAT WE SELL WE SHIP UPS DAILY

LAPP'S BARN EQUIPMENT

5935 Old Philadelphia Pike
Gap, PA 17527

Sales & Service
(717) 442-8134

Complete Package For
Dairy Barn Installations,
Buildings & Equipment