



Livestock market and auction news

Virginia Weekly Livestock

Richmond, Virginia
Thursday, July 23, 1987

FEEDER STEERS & HEIFERS IN VIRGINIA AUCTIONS WERE STEADY TO \$5.00 LOWER WHILE MIDWEST PRICES RANGED STEADY TO \$2.00 LOWER. SLAUGHTER CATTLE IN VIRGINIA AUCTIONS AND THE MIDWEST FOLLOWED CARCASS-BEEF PRICES STEADY TO \$2.00 LOWER WITH THE BOXED BEEF CUT-OUT VALUE ON TUESDAY REACHING \$102.79/CWT - \$3.02 LOWER THAN LAST WEEK. BEEF PRODUCTION

LAST WEEK WAS UP 4 PERCENT FROM THE PREVIOUS WEEK BUT 8 PERCENT BELOW A YEAR AGO AND AVERAGE WEIGHTS WERE 7 LBS LIGHTER THAN LAST YEAR. COWS AND BULLS IN VIRGINIA AUCTIONS AND THE MIDWEST WERE STEADY TO \$2.50 LOWER WHILE COW BEEF HAD VERY LIMITED SALES. CALF AND VEAL PRICES IN VIRGINIA AUCTIONS FOLLOWED EAST COAST CARCASS PRICES STEADY TO \$3.00 HIGHER BEFORE CLOSING DOWN \$2.00. SLAUGHTER LAST WEEK WAS 8 PERCENT ABOVE THE PREVIOUS WEEK, BUT 12 PERCENT BELOW A YEAR AGO. WEIGHTS WERE 6 LBS. HEA-

VIER THAN THIS YEAR. LAMB PRICES IN VIRGINIA AUCTIONS WERE STEADY TO \$3.00 HIGHER WHILE MIDWEST PRICES WERE STEADY TO \$2.00 LOWER. EAST COAST CARCASS PRICES RANGED STEADY TO \$5.00 LOWER. SLAUGHTER WAS 3 PERCENT BELOW THE PREVIOUS WEEK AND 6 PERCENT BELOW A YEAR AGO WHEN AVERAGE WEIGHTS WERE ONLY 1 LB. LIGHTER. HOG PRICES AT VIRGINIA AUCTIONS AND THE MIDWEST WERE STEADY TO \$2.00 HIGHER ALTHOUGH SOME WEAKNESS DID OCCUR. PORK PRODUCT PRICES RANGED STEADY TO \$6.00 HIGHER. PORK PRODUCTION LAST WEEK

WAS 1 PERCENT BELOW THE PREVIOUS WEEK AND 1 PERCENT BELOW A YEAR AGO AS AVERAGE WEIGHTS WERE 4 LB. HEAVIER THAN LAST YEAR. THE RICHMOND HOG MARKET CLOSED \$1.50 HIGHER THAN LAST WEDNESDAY WITH BARROWS AND GILTS US 1-4, 200-240 LBS AT \$58.50-59.00/CWT. TOTAL RECEIPTS FOR THE WEEK 233 HEAD. THE SOUTHEAST VIRGINIA HOG MARKET CLOSED \$1.50-2.00 HIGHER THAN LAST WEDNESDAY WITH BARROWS AND GILTS US 1-4 200-240 LBS. AT \$59.50-60.00 PER CWT. TOTAL RECEIPTS FOR THE WEEK 12,762.

AT HARRISONBURG, LYNCHBURG AND TAPPAHANNOCK HOG PRICES WERE STEADY TO \$1.50 HIGHER THAN LAST WEDNESDAY AT \$56.00-60.00/CWT. SOWS RANGED 38.00-40.00/CWT AND BOARS \$32.00/CWT.

SLAUGHTER STEERS AND HEIFERS 2%; SLAUGHTER COWS 22%; SLAUGHTER BULLS 3%; SLAUGHTER CALVES AND VEALERS 6%; FEEDER CATTLE UNDER 600 LBS 46% OVER 600 LBS 21%.

PRICE RANGES FOR VIRGINIA AUCTIONS SLAUGHTER CATTLE CHOICE STEERS 1100 LBS & OVER 63.75-64.50 CHOICE STEERS 1100-1300 LBS 64.25-66.10 CHOICE STEERS 1300 LBS & OVER 65.25-67.65 CHOICE HEIFERS 950-1100 LBS 60.02 UTILITY & COMMERCIAL COWS 35.00-48.00 BULLS 1-2 900-1300 LBS 51.25-63.00 FEW 44.50 1-2 1300-1600 LBS 50.00-59.25; 1-2 1600 LBS & OVER 49.50-59.00 SLAUGHTER CALVES AND VEALERS VEALERS - HIGH CHOICE AND PRIME 100-250 LBS 85.00-109.00 GOOD AND CHOICE 100-250 LBS 70.00-88.00 CALVES - GOOD AND CHOICE 9

LAMBS HIGH CHOICE & PRIME 95-125 LB SPRING 76.35-87.00 FEW 72.00; BUCK 71.00 SLAUGHTER HOGS US 2-4 200-250 LBS 57.00-59.75 SOWS US 1-3 300-500 LBS 42.00-48.00; 500 LBS & OVER 42.00-47.90 FEEDER CATTLE STEERS; MEDIUM 1 300-500 LBS 80.00-95.00 FEW 72.00 500-700 LBS 70.00-82.00

FEW 66.00 HEIFERS; MEDIUM 1 300-500 LBS 70.00-82.00 500-700 LBS 62.00-73.50

Greencastle Livestock

Greencastle, Pa.
Thursday, July 23

Report supplied by PDA

CATTLE: 259. Cows .25-1.50 higher; few Choice 1100-1470 lb. steers 58.60-62.75; few Good 55.00-59.50; few Standard 45.25-50.25; Choice heifers individuals 58.75-61.25; few Good 54.00-57.75; cows Breaking Utility & Commercial 44.75-47.85; Cutter & Boning 43.25-46.75; Canner & Cutter 39.75-43.75; shells down to 36.00; few YG 1, sl. bulls 1180-1725 lb. 49.25-55.85.

CALVES: 395. Few Good & Choice vealers 67.00-77.00; few Standard & Good 110-115 lb. 80.00-82.00; 65-95 lb. 69.00-79.00; Utility 60-85 lb. 63.00-70.00.

FARM CALVES: Hol. bulls 85-90 lb. 75.00-93.00; 95-125 lb. 110.00-133.00; heifers 95-115 lb. 78.00-89.00.

HOGS: 36. Not enough of any one grade to establish market test. One US 1-3, 545 lb sow 45.75; few boars 39.50-42.50.

FEEDER PIGS: No market test.

SHEEP: 9. One lot Good 56 lb. feeder lambs 62.00.

East Coast Carlot

Wednesday, July 22, 1987

Report supplied by USDA

EAST COAST CARLOT MEAT TRADE DELIVERED PRICES (CAF) BOSTON TO WASHINGTON AREA INCLUSIVE.

COMPARED TO TUESDAY'S CLOSE: CHOICE AND PRIME SPECIAL FED VEAL FIRM IN LIMITED TEST AND COMPARISON. GOOD AND CHOICE BONING VEAL STEADY TO FIRM; INSHIPPED UNTESTED. CHOICE AND PRIME SPRING LAMB NOT ESTABLISHED, STEADY TO FIRM UNDERTONE.

VEAL CARCASS-HIDE-ON CHOICE & PRIME (SPECIAL FED) 60 HEAD

220-280 LBS. LTD. 182.00-183.00. 65-75 LBS. LTD. 110.00, FEW 112.00, STEADY-FIRM.

THE GOOEY BUSTERS

Who Are You Going To Call When Your Lagoon Is Full Of Immovable Solids? Who Are You Going To Call When Your Equipment Isn't Capable Of Handling Your Manure Management Needs? Who Are You Going To Call When You're Uncertain If The Free Advice And Free Money Available Will Solve Your Problems?

You're Going To Call THE GOOEY BUSTERS At US Agri-Systems.

At US AGRISYSTEMS You'll Find State Of The Art Equipment And People With The Knowledge And Experience To Handle Your Gooley Problems. Call US Agri-Systems And Get Rid Of The Gooley. 1-800-222-2948

SWINE PRODUCTION SALES AND SERVICE

Feeding Programs
And Services To
Meet Your Individual
Needs

Computerized
Record Keeping
System

Grain Purchasing
And Exchange



Supplying Farm Fresh
Feeder Pigs

Marketing and Hedging
Services

Marketing of Genesis
Breeding Stock

Developing Individual
Financial Programs

Quality Products And Services - Working For YOU

419 West High Street
Elizabethtown, PA 17022

Elizabethtown
(717) 367-1525

PA Toll Free
1-800-468-5524

Shippensburg
(717) 532-7845

ATTENTION TOBACCO FARMERS!!



WATCH FOR APHIDS CONTINUOUSLY!

When spraying for aphids or suckers - DO NOT spray in hottest part of day. Especially for suckers - do not spray early in the morning when there is a heavy dew. Mid morning is best time for either spray application.

If possible, do not spray for suckers & aphids at the same time after topping. It will cause stress on the tobacco plant and make it easier for etch virus to get started.

Do not top your 609 tobacco too low! There was a good demand for short dark tip tobacco several times last year.

The CCC has finally cleared the final 55 million lbs. of 1983 Burley tobacco (process weight) out of its system in July. That makes 200+ million lbs. total. This should no longer be a terrible over hang to our LANCASTER COUNTY tobacco market.

GOOD LUCK ON A GOOD QUALITY CROP - IT WILL BE VERY IMPORTANT FOR US THIS YEAR!

PARADISE TOBACCO SALES

19 Meadow Lane, Paradise, PA 17562
717-687-0990 or 717-299-3001

ATTENTION CATTLE FEEDERS

SPECIAL GRADED SALE

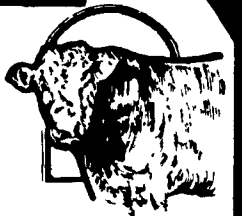
Friday, July 31
11 AM

- 150 Head Local Acclimated Cattle
All Weights

Walter M. Dunlap and Sons

Lancaster Stockyards Tel. (717) 397-5136

An Old Line Commission Firm Keeping Abreast With The Times



INGERSOLL-RAND AIR TOOLS

FREE 3/8" H.D. AIR DRILL
(Regular \$87.00 Value)

WHEN YOU PURCHASE A (3/4")
HEAVY DUTY AIR IMPACT WRENCH
(Regular \$300.00 Value)

AT OUR SALE PRICE OF \$227.00

1/2" AIR IMPACT WRENCH
Regular \$110.00

NOW SALE PRICED AT \$69.95

3/8" AIR RATCHET
Regular \$75.00

NOW SALE PRICED AT \$49.95

FOR ALL YOUR AIR TOOL NEEDS
COMMERCIAL/CONSUMER
WE WANT TO BE YOUR AIR TOOL SUPPLIER
WE SHIP U.P.S. DAILY

PETROLEUM EQUIPMENT TRADE

"SINCE 1958"

FIRST & MAYNARD STS.
717-322-5524

WILLIAMSPORT, PA
1-800-622-6020