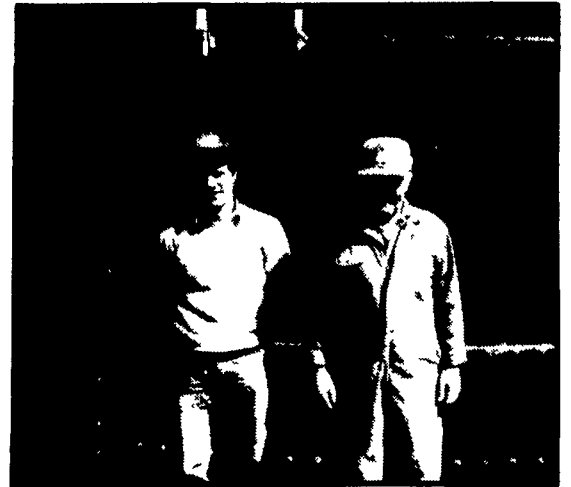




"My feed savings with Harvestore high moisture corn was well over \$7,000 last year and that was with an increase in cows."

"High moisture corn is more palatable. I can get more corn into my cows and I can get it into them quick. Since feeding Harvestore high moisture corn, my butterfat has gone up 50 lbs. and the milk has increased by 1,500 lbs. per cow!"

SHELDON PEACHEY
BELLEVILLE, PA



"What we like best about feeding high moisture shelled corn out of our Harvestore System is the savings on feed."

"On Harvestore high moisture shelled corn, our cows seem to be peaking in the third month and holding. On our old program, our cows would peak, but wouldn't hold on like they do now."

JOHN KING & SON DALE
BELLEVILLE, PA

COULD YOU BENEFIT FROM A HARVESTORE® SYSTEM WITH PENN JERSEY QUALITY BUILT IN?



"I wouldn't do without Harvestore high moisture corn on our farm. It's really convenient. We can be done harvesting in one day and you have fresh feed every time you feed it."

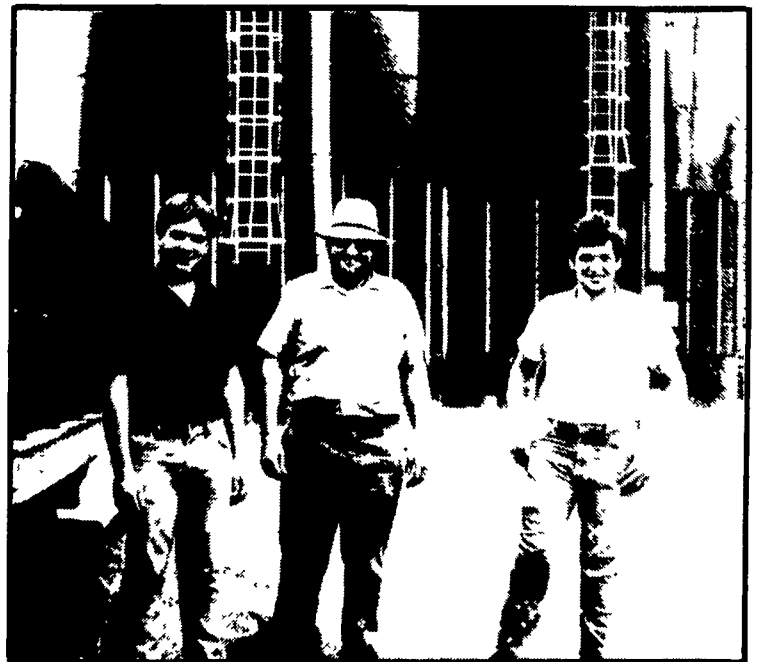
"This year with high moisture corn from our Harvestore Structure, our top cow produced 24,000 lbs milk and 1,100 lbs butterfat!"

GLEN & CALVIN BYLER
BELLEVILLE, PA

"I should have built my first Harvestore Structure years before I did! Purchasing a Harvestore Structure was one of the best investments I ever made."

"I'm well-satisfied with the pre-owned Harvestore Structure that Penn Jersey built for us. Their building crew really knows how to work!"

DAVID YODER & SONS LOREN & MARLIN
McVEYTOWN, PA



The information contained herein is general in nature and is drawn from sources deemed to be reliable. The results you may achieve with your Harvestore® System depend primarily upon your management skills and may vary from successful results achieved by others. Any application to a particular farming operation requires the advice of qualified experts and is subject to limitations of good management, weather and other conditions present at the individual location.



PENN JERSEY PRODUCTS, INC.
THE AREA'S AUTHORIZED HARVESTORE® SYSTEMS DEALER
P.O. BOX 7 • NEW HOLLAND, PA • 717-354-4051

SUB-STATIONS SERVING YOU FROM

NEW! Mill Creek, PA
717-483-6940
John Yoder, Mgr.

New Enterprise, PA
814-766-2364
Ken Bupp, Mgr.

*"We care about
your business!"*

Newville, PA
717-776-3397
Maynard McCullough, Mgr.

Columbus, NJ
609-298-7136
Charles Van Mater, Mgr.