

Dairy and Livestock Sales

Public Auction Register

SAT AUG 15 - 10AM 16 Acre Farm, HH, Antiques, Farm Mach Estate of Catherine E McCleaf 2495 Table Rock Rd, Biglerville, PA, turn off Rt 34 in Biglerville to Rt 394 E for approx 2 mis Larry J Peters, Auct

SAT AUG 15 - 10:30AM Real Estate, Garage Eq, Parts & Misc, Antiques, Collectibles, HH 6 mis E of Klingerstown, PA, 2 mis W of Franklin Square Robert & Ethel Karterman, Owners Dockey, Dockey & Deppen, Aucts

SAT AUG 15 - 11AM 115 Hol Cattle Mack Rd, 4 mis from Elkland, PA 4 mis from Nelson, PA 7 mis from Addison, NY Michael Marton, Owner Gordon Wood, Auct

SAT AUG 15 - 11AM Farm Eq & Implements Central Implements Fall Sale, Rt 12, Snow Hill, MD Pete Richardson Auct Sales

SUN AUG 16 - 1PM 3/4 Ac "Quehanna Motor Hotel" Bar/Restaurant & 3BR House Rt 879, Karthous, Clearfield Co, PA 15 mis from I 80, Snowshoe

exit, N on Rt 144 to Rt 879 Kenneth A Geyer Auct Co Inc

TUES AUG 18 - 10AM Construction Eq, Dump Trucks, Trailers, Light Vehicles, Contractors Tools Delaware Valley Contractors, Montgomeryville, PA Vilsmeier Auct Co, Inc

TUES AUG 18 - 5PM By Fred N Buch & Helen I Buch At 1419 W Main St, Ephrata, Lanc Co, PA Antique Millwork, Lumber, Hardware & Tools T Glenn Horst & Sons, Aucts

WED AUG 19 - 6PM PA's 10th Performance Tested Boar Sale at PA Dept of Agriculture's Meat Animal Evaluation Center, 651 Fox Hollow Rd, State College, PA

THURS AUG 20 - 7PM 2 1/2 story brick home and 2 story barn & workshop Approx 10 mis E of Lancaster, PA, turn N on Belmont Rd in Leaman Place approx 1 mi N off Rt 30E Take W Pequea Lane off N Belmont to 3421 W Pequea Lane, Leacock Twp Enos E & Anna Mary Beller, Owners Ron Funks Auctions

FRI AUG 21 - 6:30PM Consignment Sale of Feeder Pigs & Feeder Cattle Keister's Middleburg Auct Sales, Inc, Rt 522, 3 mis E of Middleburg, PA, 5 mis W of Selingsgrove, PA Don & Walt Keister, Owners

SAT AUG 22 - 9AM 21 Acre Farm, Antiques, HH, Farm Eq, Coins Along School Rd, Bracknock Twp, Lanc Co, PA Rt 897 approx 1 mi N of Fivepointville turn E onto School Rd Terms by Isaac

G & Eleanor H Good T Glenn & Timothy G Horst, Aucts.

SAT. AUG 22 - 9:30AM Public Service Electric & Gas Co, Edison, NJ Vilsmeier Auct Co, Inc

SAT AUG 22 - 9:30AM Metropolitan-Edison Co, Reading, PA Vilsmeier Auct Co, Inc

SAT AUG 22 - 11AM Farm Toy Consignment Auction Old & New Items At Gap, PA Fire House near intersection of Rt 30 & 41 Dale Stoltzfus, Auct 717-768-3554

SAT AUG. 22 - 11AM Large Southern Steuben Co Real Estate & Milking Eq Auction 77 Acres Selling in 12 Parcels for Federal Land Bank Troupsburg, NY Thomas Wamp Real Estate/Victor J Pirrung & Pirrung Auctioneers, Inc

SAT AUG 22 - 11AM Farm Machinery For Paul Cornish, Hope, NJ Rt 610 W, 2nd farm 4 mis S of Rt 80 (Hope Exit) take Rt 519 S to 610, 3 1/2 mi N of Rt 46, Bridgeville, take Rt 519-N to 610 7 mis from PA line Col Fred R Daniel Aucts

TUES AUG 25 - 2:30PM

20 Acre Farm, HH, Tools 1 mi W of East Prospect, York Co, PA Turn S on Prayer Mission Rd Go 1 mi to farm on right Sellers Earl & Annabel Flaharty Blaine N Rentzel, Auct

WED AUG 26 - 6PM Modern Farm Eq & Trucks. 1 mi S of Seven Valleys, PA, toward Glen Rock on Rt 616 turn right on Shaffers Church Rd. Top of hill go right on Shaffers Rd 1 2/10 mi to sale at farm on left David & Paul Sharp Blaine N Rentzel, Auct

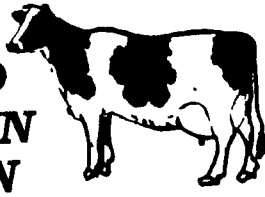
THURS AUG 27 - 9:30AM 325 Reg Holsteins 1st

farm W. of Burwick, PA on Rt 93 Wm Fairchild, Owner Gordon Wood, Auct

THURS & FRI, AUG 27 & 28 - Large two day sale of farm equipment at Horst Machinery lot, one mile east of Marion, PA Ralph W Horst, Manager

FRI & SAT AUG 28 & 29 Real Estate, Antiques, Glassware, Carnival & Fiestal, Furniture, 2606 Old Philadelphia Pike along Rt 340 E Bird-in-Hand, PA, approx 6 mis E of Lancaster Mrs Ruth G Kniss Owner Ron Funk Aucts

DHIR TESTED HOLSTEIN AUCTION



Wed., July 29, 1987

at New Holland Sales Stables, New Holland, Pa.

Regular sale starts at 11 A.M.

30 Holsteins, 5 fresh recently, 8 hd Springing, 5 due Oct. thru Dec. Balance in various stages. Individuals milking up to 85 lbs. per day. Records up to 18,296 milk 683 Fat. Sires Rep. - Spirit, Noah, Cavalier-Jemini, Astro, Trump plus others. Many big strong high producing cows will be found here. 1 Reg. breeding age bull out of Jason. 30 day TB and Blood tested for interstate shipment. Pregnancy examined! Records at ringside!

Plan To Attend This Sale!

CONSIGNED BY:

COL. FRED R. DANIEL AUCTIONEERS INC.

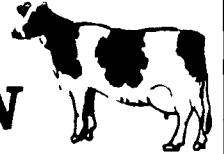
201-369-4784

Acting As Agent

For a Local

New Jersey Dairy Farmer

DAIRY AUCTION



THURSDAY NITE, JULY 30, 1987 7:30 P.M.

At Jim Adriance farm, turn off Rt. 706 just east of Montrose (above Ames), follow arrows, Susquehanna Co., PA Yellow auction arrows.

26 MATURE COWS:

Moved to my barn, we will be selling the Nathan Wheeler dairy from Dushore, PA, 26 mature cows, a mixed breed dairy, many fresh cows, the rest in all stages.

27 MATURE COWS

Also, we will be selling Shuda Brothers Dairy, Montrose, PA, 27 mature Holsteins in various stages of lactation, some ready to freshen, young dairy, a lot of 1st & 2nd calf heifers, some real big cows here. Pregnancy examined.

15 AUGUST HEIFERS

We also have 15 Bagging holstein heifers all due in August. These are big & fancy.

WE COULD USE MORE CATTLE FOR THIS EVENING AUCTION! IF YOU HAVE SOME, GIVE ME A CALL IN TIME FOR BLOOD TEST, TRUCKING, ADS.

Jim Adriance, Harvey Clary,

Auctioneers

AU04-L

717-278-1574

SHALELEIGH JERSEY DISPERSAL

2 Miles West of Grantsville, MD on US Rt. 40 to Amish Rd., at the Phillip Bender farm.

JULY 31, 1987 AT 11 A.M.

Selling 48 Registered Jerseys 33 Cows & 15 Bred Heifers

26 to freshen from July 1 to Sept. 15. Also selling 4 Holsteins. Pregnancy checked, DHIA records, Interstate Health.

Terms: Cash or good check Lunch Available

OWNER:

JOE COSGROVE Rt. 2, Keyser, W. VA 304-788-2154

Auctioneer: Clark A. Yoder, AU-001048-L Salisbury, PA 814-662-2901

For catalogs contact Henry E. Brenneman, Rt. 1, Salisbury, PA. 15558.

DAIRY SALE

For Your Cattle

Fresh or Springing Cows & Heifers, Open Heifers, Started Calves, Service Bulls.

Demand is Strong!

If you have anything for this sale, let us know so we can get the word around.

WEDS. EVE., JULY 29TH 7:30 P.M.

FOUR STATES LIVESTOCK SALES Hagerstown, Md. Phone 733-8120

TIM TEEL DISPERSAL

SAT., AUG. 1st At 12:30 PM

At the Bedell Farm, located on the falls to Mill City Road (About halfway between). 11 miles from Tunkhannock & 3 miles from Lake Winola, Pa.

Wyoming Co. Yellow Arrows!

36 Holsteins

30 Mature cows, 1 bred hfr., 5 open hfrs. Some cows fresh June, many due Aug. thru Oct. Making a 50 lb. average. Several are 1st calf hfrs. Vet examined, BVD shots & tested for interstate.

MACHINERY

M.F. 255 diesel tractor, M.M. G955 diesel tractor with over-under shift. Both are wide front, P/S, 3 pt. and look good. M.F. #345 plows 4 bottom & used little, N.H. #275 baler & thrower, N.H. "717" row chopper, N.H. #513 spreader 175 bu. with hydraulic gate, Hesston #1010 hydra-swing, 9 foot cut, bale box on J.D. wagon, Lamco forage box on J.D. wagon, J.D. #640 rake, McConnel 16' transport harrow, Kools #KB54 PTO blower & pipe, 32 ft. hay & grain elevator with motor, 300 gal. fiberglass sprayer, 200 gal. diesel tank and pump, Unico 36 inch vent fan (good) etc.

MILKING EQUIPMENT & BARN CLEANER

Gurton 500 gal. tank, 3 DeLaval floor units, regular pulsation, Universal 3 1/2 H.P. pump and vacuum control. Cornell cleaner & approx. 220 ft. chain, etc.

Terms: Cash or good checks.

Lunch Wagon

Owners

TIMOTHY & HANNA TEEL

Jim Adriance, Auctioneer AU46 Montrose, PA 278-1574

FREE MILK



SALE

FREE ICE CREAM



40 Registered Holsteins YODERSTEAD'S REDUCTION AND CONSIGNMENT SALE TUESDAY, JULY 28, 1987 - 11:00 a.m.

Take Rte. 655 South from Rte. 322 approx. 7 Miles, Turn Right Onto Dry House Road - Follow Signs

YODERSTEAD LEE BONNIE GP 83 3-07 2X 305 20510 685 Due Aug 20 to Valiant; WILLDN FRED A CHARMCROSS MARS VG 85 4-05 2X 350 24936 1022, YODERSTEAD SEXATION RUTH-TWIN G 77 4-10 2X 361 22187 640 Fresh May 13, 1987; YODERSTEAD SEXATION CHARITH VG 85 3-06 2X 354 22950 898 Due Aug 2 to Melvin, YODERSTEAD SEXATION FRED A GP 82 4-08 2X 341 23192 853 Due Aug. 21 to Mandingo; YODERSTEAD MICHAEL KITTEN 2-04 2X 361 20573 696 Fresh June 16, 1987; YODERSTEAD ACE GRETA G 78 4-04 2X 305 20605 661 Due Before Sale, YODERSTEAD JEWEL OFF GP 82 2-03 2X 305 20130 665 Fresh June 13, 1987, VETTOREL MILESTONE MISSIE GP 82 4-02 2X 305 17430 792 Fresh April 24, 1987, YODERSTEAD THREAT ORPHIA G 79 3 00 2X 305 20010 714 Fresh May 11, 1987, YODERSTEAD ELMER PANSY GP 81 4-03 2X 353 20335 645 Fresh May 29, 1987, YODERSTEAD CITATION LUCINDA GP 80 2-11 2X 359 19525 775 Fresh May 18, 1987, YODERSTEAD COMPUTER MAGGIE VG 85 4-04 2X 305 20807 588 Fresh June 9, 1987, ZI-WE ALEXANDER HARRIET HAZEL GP 80 2-08 2X 342 20856 803 Fresh March 20, 1987, YODERSTEAD LANCE FOXY 2-03 2X 354 21305 688 Fresh May 27, 1987, YODERSTEAD MICHAEL FERN VG 85 4-00 2X 305 19040 445 Fresh June 21, 1987, YODERSTEAD MILESTONE DOLLY G 78 6-03 2X 365 21292 731 Fresh by Sale Day, YODERSTEAD G V STAR EFFIE VG 85 2-07 2X 305 16920 670 Fresh May 15, 1987, YODERSTEAD MICHAEL FLOWER GP 83 3-04 2X 305 22020 567 Fresh May 31, 1987, YODERSTEAD PETE EVELYN GP 81 3-09 2X 305 22530 685 Fresh June 14, 1987, YODERSTEAD GV STAR ELBY GP 83 3-05 2X 305 17220 735 Due July 26 to Count

OWNER: MARK R. YODER - 717-935-2482 RD 2, Belleville, Pa. 17004

CONSIGNMENTS

GLEN-BER JET STREAM JUDY Due Oct to Astroanut From EX Dam by Elevation Next Dam 166190 Lifetime, GLEN-BER KIT BUILDER MICHELLE Fresh June 21 From EX Dam w/170510 7134 Lifetime Consigned by Glenn Peachy - Petersburg, Pa.

SAN-D-K BELL RICHIE Fresh June 20, 1987 From GP Valiant From VG Creek From EX Bootmaker, PLUM-BOTTOM BELL PRIGANCE GP 80 2Y 1-11 287 15061 525 Inc Due 7/24 to 9H780, Consigned by Maudens Bros - Belleville, Pa

CRYSTAL SPRING SHIT ABIGAIL VG 85 Index 1133 4-03 329 21296 652 Dam Jet Stream, CRYSTAL SPRING FORCASTER DIXIE Hfr Due July 25, 1987 to Jet Stream, Consigned by Enos J Yoder - Belleville, Pa

CRYSTAL SPRING ELEVATION ALANE Hfr Fresh 6-9 87 Dam VG 87 Jemini w/4 J test, EL-BATIYAH VALIANT TIFTANY G 79 3-05 17644 599F, Consigned by Sam Yoder - Belleville, Pa

LUENOS CHAIRMAN BONNIE GP 81 Fresh June 24, 87 2-02 361 17301 619 Dam 83 pt Creek Next Dam 86 Pt Image w/120390 4871 Lifetime 4% Test, BARRVILLEACRES VIC MISSY GP 81 Fresh July 5, 1987 2 0 2X 299 13836 3 7 518 Dam Betty Chief VG 86 w/21,405, Consigned by Enos J and Lucy Kurtz - Belleville, Pa

VENORDA CHAIRMAN DONETTE Due by sale Dam VG 85 Marvex Next Dam VG87 w/176,000 Lifetime, Consigned by Kim Gromis - Belleville, Pa

FRONT-MOUNTAIN POSCH GRANNY 2-07 353 21712 805 1st Dam 84 pt Bootmaker Lee Next Dam 86 Pt Elevation, Consigned by Kore E Yoder - Belleville, Pa

REED-GAP KINGPIN ANN Hfr Bred for Late Aug. Dam Ivanhoe Star w/4-8 365 19432 4 3 843, Next Dam VG 88 Elevation, Consigned by Lori Reed - Reedsville, Pa

FROG-HOLLOW ELEVATION IVA Hfr Due late Aug From a Kingpin w/16643 4 2 699, Next Dam VG 85 Astronaut, Consigned by James O Reed - Reedsville, Pa.

Dairymen: Don't miss this opportunity for there are some strong pedigrees and a lot of MILK along with some outstanding breeding stock.

AUCTIONEERS:

Dan P. Zook - AU 1063L

Mark S. Yoder - AU 1049L

John W. Rheam - App. AU 1608L

PEDIGREES: Oren Bender Ph. 301-826-8340

SALE MANAGER:

John W. Rheam

Ph. 717-935-2737

RD 1, Box 25

Belleville, Pa. 17004