

STITZEL FARM EQUIPMENT, INC.

East Windsor St. & Krick Lane Hamburg, PA 19526

Phone Bus. 215-562-8377 Home 215-562-7451 or 215-562-5740

COMBINES w/Good Selection Of Heads:
We have 18 late model, very nice, local, one-owner combines.

1981 NH TR85, 4WD, full equipment.

1983 MF 860 Hydro V8 motor, fully eq., low hrs., looks like new, w/rear whl. drive w/1163 C.H. & 15' flex U2, reel, like new.

M.F. (82) 850 4 WD Hydro w/16' Flex + 1163 C.H., 900 hrs. Just out of field working, \$47,500; M.F. 1980 750 Gray Cab, Hydro, fully eq., 700 hrs.

JD 8820 fully eq. w/Turbo Hydro w/Reverse feeder house and chopper, very nice; JD 7720 and 6620 available with 4WD; 1980, 6620 JD (81) 6620 4WD, real nice; JD 81 Model, 6620 LL, w/215 flex, very nice; JD '81 Model 6620 LL w/216 Flex, like new.

JD 6620 Side Hill w/700 hrs., looks like new; JD 4420, low hrs., very nice; 1976 JD 7700, real nice; JD '81, 7720, Cab, Air, Turbo, Hydro w/220 Flex; JD 6620 S.H., 800 Hrs., real nice, just out of field working. For \$39,500; JD 6620 LL, 900 hrs., 1 owner, nice; (75) 6600 D. Rotary Screen good; JD (79) 4400D, CA, 23x26 Tires, real nice w/213 & 444; 1977 JD 4400 D., C.A. w/23x26 tires.

IH (Used) 1460 Axial Flow - 800 Hrs., 863 C.H. & 15' grain for, \$41,500; MF 550 D., C.A., low hrs.; 55 Sq. B. w/Cab - Good; 55 C.S. sq. back w/cab; (76) 915 Dsl., C.A. Turbo Hydro; IH 715 Gas w/Cab & 810 grain for \$5,500; IH 105 Combine w/Cab; IH 82 Pull Combine; (75) 510 D. Hydro w/Cab; N.H. TR70 C.A. Hydro; Gleaner (76) FD. w/C.A. - Nice; IH 205 Combine; IH 105 w/Cab & 10' Grain, nice.

N.I. 702 & 705 Uni-Systems w/Full Eq.; NI 702 D. w/727 bed & 3R C.H.; 767 Super Chopper; NI 727 Husking Beds; NI 737 Husking Beds; N.I. 729A Shellers.

CORNHEADS: J.D. 843 LP, 643 LP, 443 & 444 LP, 343, 244, 243, (New) Only 1; 443 - \$9,100; 313 (45), 205 (40) 234, 435.

I.H. 863, 844, 843, 833, 744, 227.

A.C. GL 440, C440, A438 Black, A630 Black, L2, L438, M430, F430, KF335, F330.

M.F. 1163, 1143, 63, 44, 33, 43, 24, 222, 422.

N.I. 738, 743, 730, 734, 725, 723, 762, 763; Ford 4-30"; Case (404); NH 4 & 6 row.

GRAIN HEADS: J.D. Used 12'-15' Incl. 213 & 215 & (2) JD 216 Flex; JD 218 Flex; 222 Flex; 213 & 215 Rigid.

I.H. 810-13' Thru 16.5' w/Reg. or Floating; 2-New 820, 17 1/2' Flex, \$5,500 each.

M.F. 10'-16' Reg. or Floating Bar; A.C. E10', G15'.

N.I. 713 Flex Or Rigid.

J.D. New JD 2950 w/R.G.; 4440 C.A.P.S. - Real Nice; 4440 PS w/ROPS; JD 4240 C.A.P.S.; Used JD 4240 C.A., Q.R., 1400 hrs.; Local owner, looks like new; 4240 Q.R. \$15,500; JD 4240 QR,

ROPS: JD 2940 w/F.W.D. & 260 Loader, Low Hours; JD 2940 w/FWD & Roll-Guard; JD 2440 Dsl., U, original; 1977 JD 4230 C.A., Q.R., sharp, 2200 hrs.; 2940 w/R.G.; 8630 4 WD C.A.Q.R., Full Eq. w/Duals; 8430 4 W.D. C.A.Q.R., Fresh Motor - Real Nice; 6030 C.A. Duals - Nice; JD 4630 C.A.P.S. w/new tires; 4630 SR w/Cab & Air; JD 4430 CA QR w/front wheel assist; JD 4430 C.A.Q.R.; JD 4430 CA; 8 SP; 4230 C.A.Q.R.; JD 4040 PS w/R.G.; JD 4030 w/creeper trans.; JD 2630 w/Hi-Lo; 1530 w/Hi-Lo; (70) 5020 - \$5,900; 4520 w/Factory Cab; JD (5) 4020's 1964-1972; JD 4020 PS; 4020 S.C., W.F.E.; 4020 P.S., S.C., W.F.E.; 4020 w/58 Loader; 3020 D.S.C., W.F.E.; JD 3020 Dsl., WF; JD 3020 D Tricycle; 2520 Dsl.; 2020 Gas; 3020 Gas, PS, original; JD 3020 Gas w/Schwartz Loader, as is; JD 4520 R.G. & cooler w/30.5x32 tires; JD 2020 Dsl. w/#47 Loader; 4010 D w/new clutch; 630 Gas; JD 430 Utility w/3 pt.; JD 2020 Gas w/L; JD 4010 D., good; JD 4010 Gas; JD 2510 Dsl.; 630 Gas, 620 Gas, 620 LP, 70 w/loader.

I.H. (New) 5088 Full Eq. C.A., never used. Sale Price, \$33,450; 3588 2+2 CA, 1400 hrs.; 786, one owner, original; 3288 CA, 670 hrs.; 1086 CA w/Dual Whls., original; 1586 C.A. Nice; 1586 w/R.G.; 886 w/R.G.; IH 686 Dsl., original; Farmall 1066 C.A., original; IH 1066 Cab & Duals; Hydro 70; 1568 C.A. - 1,000 Hrs., Real Nice; 1566 w/Cab; 1976 Model 1566 CA, Black Stripe; 1466 w/Cab; IH 1466 C.A., as is; IH 1466 Fender, new motor, nice; 1066 Hydro - Original; 966 Original; 766D.; IH 584 Dsl.; 674 D.; 574 D. w/Loader; IH 574 U Gas w/2000 Ldr.; IH 544 Gas w/#2000 Loader; Farmall 544 Gas, WF, 3 pt.; IH 444 U. Gas w/IH 1501 Loader; 656 Gas; 806 D - \$4,750; 1256 w/Cab, Nice; 756 D. W.F.E. & F.H.; 756 G Hi-Clear; 656 Gas - W.F.E. - Original; 656 Gas & Diesel; 656 D. Hi-Clear; 826 D. Hydro; 1206, Nice; 706 D. - W.F.E. - 3 pt. - \$5,000; F706D., WFE, 3 pt.; 706 Gas T/A, W.F.E.; F.H.; 606 Gas w/3000L; Super M; IH 240 Utility; F560 D w/Fast Hitch; F560 Dsl., WF; (2) F450 Gas, Tri., F.H.; F560 Gas; F450 D.; F508D.; F100 High Clear; IH 04 Orchard; Super A w/Sickle Mower, Plow & Cultivator.

New AC 8050 C.A., P.S., rad. tires, fully eq.; Used AC 8010 C.A., P.S. w/F.W.D.; used AC 6080 w/R.G.

A.C. New AC 6080; Used AC 6080 w/ROPS; AC 7060 C.A. w/Duals; 7045 C.A., 20SP; 7040 C.A.P.S., Like New; 210 - New 20.8-38 Tires; AC 200 D original; AC 220, real nice; XT190D. w/3 pt.; AC WD 45 w/P. Steering.

CASE Case 1594, P. Shift, low hrs., like new; Case 2590, CA, PS, 1600 hours; 1370 C.A.P.S. Factory Duals; 2090 CAPS, \$14,800; 830 Gas, WF, 3 pt.

M.F. 2705 C.A., 24SP, Duals, real nice; 1155 C.A.M.P. - \$8,500; 1135 C.A.M.P.; 1977 MF 1135 CA, Duals; MF 175D; MF 1130; 2630 w/Hi-Lo; 1530 w/Hi-Lo; (70) 5020 - \$5,900; 4520 w/Factory Cab; JD (5) 4020's 1964-1972; JD 4020 PS; 4020 S.C., W.F.E.; 4020 P.S., S.C., W.F.E.; 4020 w/58 Loader; 3020 D.S.C., W.F.E.; JD 3020 Dsl., WF; JD 3020 D Tricycle; 2520 Dsl.; 2020 Gas; 3020 Gas, PS, original; JD 3020 Gas w/Schwartz Loader, as is; JD 4520 R.G. & cooler w/30.5x32 tires; JD 2020 Dsl. w/#47 Loader; 4010 D w/new clutch; 630 Gas; JD 430 Utility w/3 pt.; JD 2020 Gas w/L; JD 4010 D., good; JD 4010 Gas; JD 2510 Dsl.; 630 Gas, 620 Gas, 620 LP, 70 w/loader.

I.H. (New) 5088 Full Eq. C.A., never used. Sale Price, \$33,450; 3588 2+2 CA, 1400 hrs.; 786, one owner, original; 3288 CA, 670 hrs.; 1086 CA w/Dual Whls., original; 1586 C.A. Nice; 1586 w/R.G.; 886 w/R.G.; IH 686 Dsl., original; Farmall 1066 C.A., original; IH 1066 Cab & Duals; Hydro 70; 1568 C.A. - 1,000 Hrs., Real Nice; 1566 w/Cab; 1976 Model 1566 CA, Black Stripe; 1466 w/Cab; IH 1466 C.A., as is; IH 1466 Fender, new motor, nice; 1066 Hydro - Original; 966 Original; 766D.; IH 584 Dsl.; 674 D.; 574 D. w/Loader; IH 574 U Gas w/2000 Ldr.; IH 544 Gas w/#2000 Loader; Farmall 544 Gas, WF, 3 pt.; IH 444 U. Gas w/IH 1501 Loader; 656 Gas; 806 D - \$4,750; 1256 w/Cab, Nice; 756 D. W.F.E. & F.H.; 756 G Hi-Clear; 656 Gas - W.F.E. - Original; 656 Gas & Diesel; 656 D. Hi-Clear; 826 D. Hydro; 1206, Nice; 706 D. - W.F.E. - 3 pt. - \$5,000; F706D., WFE, 3 pt.; 706 Gas T/A, W.F.E.; F.H.; 606 Gas w/3000L; Super M; IH 240 Utility; F560 D w/Fast Hitch; F560 Dsl., WF; (2) F450 Gas, Tri., F.H.; F560 Gas; F450 D.; F508D.; F100 High Clear; IH 04 Orchard; Super A w/Sickle Mower, Plow & Cultivator.

New AC 8050 C.A., P.S., rad. tires, fully eq.; Used AC 8010 C.A., P.S. w/F.W.D.; used AC 6080 w/R.G.

Shellers & Super Shellers; N **SOLD** 1R Picker.

New N.I. 329 Super Sheller List \$6700.00, Special \$3,550; N.I. 330 - 3 RN w/Supershellers; 325 2RN w/Grinder.

JD 3020 w/NI 319 mtd. 12 roll picker, very nice.

PICKER: NI 311, 2R picker priced right; JD 237 Mtd.; Ford Blue, 1R side mtd. picker, real nice; IH 1PR Picker.

FORAGE EQUIP.: Forage Harvesters w/Choice of Heads.

J.D. 5440 S/P w/R.W.D. C.A. - Hydro; 5200 S/P w/R.W.D. C.A.; Hydro; JD 3R 30" & 3R 34 & 38" rows, like new; Silage heads & 7' hay pickup heads; 34; Burnt JD 3960 Chopper w/2R Corn Head.

N.H. S717; NH 880 w/2RN C.H., real nice; NH 782 w/heads; NH 770 Dsl. SU w/772A Ldr.; Ford 4000 SU w/PS; Ford 4000 Dsl., original paint; Ford 3000 Gas w/8 SP; County Super 6, 4WD w/3 pt.; (52) Ford 8N.

OLIVER 1855 w/20.8-38 tires; 1950 T w/Cab - \$5,975; 1650 D., WF w/3SP; 1550 gas.

WHITE (New) 2-65 w/F.W.D. & (New) 1730 Loader - List \$29,000 Sale - \$18,900; White 4-150 4WD Cab & Air, 2800 hrs.,

HAYBINES: NH 495 Haybine, real nice; (Used) 489, 488 Nice; 479, 478; 4; **SOLD** (Nice) like new; NH 477, 7' for \$2,350; IH 1190 Haybine; JD 1380 Hydro Swing Haybine; IH 990 haybine.

(Used) M.C. 7E; MC9E Rotary Scythe; (2) NI 272 Cuditioners; N.H. 1034 Stack Wagon.

FORAGE HEADS: N.H. 717-S Direct-Cut for 770 & S717; 890 EN-2RN Snapper Head; 770-1R Snapper Head; 1, 2, & 3R Silage Head; NH 880 S 880W PU; NH 880 S Direct Cut Head.

J.D. 1, 2 & 3R Snapper Heads; 2 & 3R Silage Heads, New & Used 5 1/2' Hay Pickups; 4-R Stalker Head - Real Nice; JD 243 C.H. w/adaptor plate; 3 JD C.H. harvester adaptor plates; JD 8' Direct Cut Head.

I.H. 2 R.N. Silage For 550-650.

FOX Fox 984, 4R Silage Head; 2 CSB 2RW - Snapper Head; 263-2 RW; 215-109 Hay Pickup; 476 - 7' Hay Pickup.

GEHL HA 400 Pickup.

PLANTERS: JD 7000, 12R Front Fold Planter, Dry Fert. w/No-till, full equipment; JD 7000, 6R Cons. w/Dry Fert.; JD 7000, 4R; (Used) 7000-6R Cons. Liquid w/No Till; 7000-4R Dry & Liquid; JD 4R Cons. w/Dry Fert. & Insect.; JD 7000, 8R w/Liq. Fert. & Insect.; JD 1240 plateless, nice; IH 800, 8R Liq. Fert.; IH 800, 6R Dry Fert.; IH 400, 6R Dry Fert. w/No-Till; IH 400, 6R Liq. Fert.; IH 56, 4R Planter; Hinkler 4R Econotill Planter, No-till, w/Kinze Units.

WHITE 5100 - 6R Dry Fert.; White 5100 6R Planter, Liq. w/No-till; 5400, 6R, Dry w/No-Till.

DRILLS: JD 8300 (Like New) 100 Acres; 21x7 D.D. w/Soybean Att.; JD 8300, 21x7 DD w/Press Wheels; JD 8200, 18x7 DD Drill; JD 8300 23x7 Drill; JD 8350, 23x7 w/Fert. & Seed.

IH 5100 21x7 Drill; J.D. 8350 21x7 D.D. w/Fert. & Seed; JD 8250 Drill w/Seed, 21x7 SD; Crustbuster 3 pt. Drill; Brillion 8' & 10' Seeder.

GRINDERS/MIXERS: IH 1150, nice; Gehl 115 grinder mixer; Farmhand 880 Big Tub Grinder; (2) NH 352 Grinder Mixers.

BLOWERS: JD 6500, nice.

TILLAGE EQ.: PLOWS JD 2 & 3x #845 Rollover; JD 2500 4x18 Reset; I.H. 5x16 Semi-Mount w/Spring Reset; IH 510, 6X; IH 540, 4X; IH 720, 5X Toggle Trip; OLIVER 546 - 5x16 Spring Reset; Oliver 565 4x Plow; I.H. 700 - 6x16 Spring Reset; JD 3200, 6x Reset; Oliver 6x Reset; WHITE 549-7x sp. reset; J.D. 7x; M.F.

6x on land hitch; JD 2800, 7X Variable Width On-Land.

CHISEL PLOWS: Brillion 8', 9' & 10'; I.H. 55-12'; (2) 7' 3 pt. chisel plows; Bush Hog 10' Chisel Plow w/Buster Bar; Brady 10 & 14' Chisel Plows.

DISCS: Miller 10' Offset; White 281, 12' offset Disk; Miller 14' Offset Disk, like new; JD 210 Disk; JD 230, 18 & 20' Hydraulic Fold; Taylorway 16' Rock Flex Wing Disk; Bush Hog 18' Hyd. Fold Disk.

MULCH TILLERS: Glencoe SS18 Fold Soil Saver; Glencoe SS13 Hyd. Fold Soil Saver; (2) J.D. 1710-11'.

CULTIMULCHERS: New Dunham Lehr 13' at dealers cost; JD 10' & Brillion 12' & 15' cultimulchers; Used JD 12' Roller Harrow.

CULTIVATORS: JD 2R Cultivator; Ferguson 2R 3 pt. Cultivator; JD 4R Front Mount Cultivator; (4) JD RG 4 Cultivators; JD & IH 6R 3 pt. cultivators; MF 6R S Tine Cultivator; Case 6 to 8R 3 pt. hyd. fold cult.; J.D. 1000-25' - Hyd. Fold.

MISC: I.H. #2 & 7 Shank V-Rippers; Glencoe Soil-Finisher 12'9" - Like New; (2) Howard 13' Rotavator; Knowles 16' wing trans. harrow, used 4 acres; Brillion & JD 20' Wing Harrows.

New JD 28' Hyd. Fold Rotary Hoe Under Dealer Cost; Used 400-15'.

INDUSTRIAL: CRAWLER LOADERS: A.C. H-3 w/6 Way Blade; J.D. 840 Self Loading Scraper; Case 310 Crawler Loader; Case 584 D. Fork Lift.

1978 Case 580C Dsl. L, B w/ROPS & Cab; AC 715B L & B.; IH 3514 Loader Backhoe; Case 580 Gas w/Ldr. & 3 pt.; Cletrac crawler w/blade; JD 1010 Crawler w/Blade & PTO; Kelly B-70, 3 pt. Backhoe. 2 vrs. old.

LOADERS & BLADES: J.D. 48, 58, 148, 158, 36, 245 (SOLD); IH 2000, 2250, 2350, 2355

(New); NI Loader; Schwartz loader for Case 730; Schwartz 1400 loader; Artsway HD loader for 4WD; (New) J.D. & I.H. Buckets; New Leon Heavy Front Blade for 4WD; NI 4R shredders; Brady 4R shredder.

LAWN & GARDEN: JD 850 D w/Belly mower; JD 330 D., like new; (2) IH Cub 154; (2) Late Model IH Cubs w/equip.; Cub 184 Lo-Boy; Satoh 650 w/3 pt. & PS; Cadet 782; Cadet 682; Cadet 1250 & 1450, 149, 128; J.D. 314, 317, 216, 214, 212, 210, 140, 130, like new, 111, 108 w/bagger; AC 710 & Case 444 Riding Tractors; Cub Cadet CC105; AC 716; Bolens 850 & 1250; Woods RM 59 Finishing Mower, like new; 8' York Rake w/Scarifier & Blade.

Rotary Cutters: New Wood **SOLD** Fold; Used 15' **SOLD** Id; Used Brillion 12'; New FMC 13'; Used FMC 13'; New **SOLD** HD; Used Woods 7'; New 5 & 6'.

Trailer load of (New) Killbros Bins & Running Gears Ficklin 300 Gravity Bin w/Running Gear & Auger Unload Farmrite 500 gal Sprayer New Damco 500 gal Sprayer John Blue 1000 Tandem Axle Sprayer Full equip like new Rex 400 Gallon Sprayer Artsway 155 Feed Wagon like new Artsway 850A Wagon w/Scales Gehl BF190 Feed Wagon Badger Liq Tank like new Field Queen 1408 Side Dump Wagon Arps 3 pt snow blower Bestland Rock Picker Woods 106 Ditch Cutter IH 115 Side Mower Mower NH 450 3 pt Sickle Mower (New) McKee Snow Blower Front Mount NI 622 Blower JD Quick Couplers Sets Of Press Wheels For J D Drills JD 42 Cast Wheels and Tires (2) New Sets JD 38 Cast Whls & Rim For 4640 IH Flat Top Fenders For 706 1466 CABS For Tractors JD IH 66 Series New Full Vision Cabs For M F 375 & 285 JD & IH Front & Rear Wts JD 243 Corn Head w/Adaptor Plate

J.D. Roll-Guards; Fast Hitch for 560 & 450; JD belly mowers for JD 850 & 950 etc.

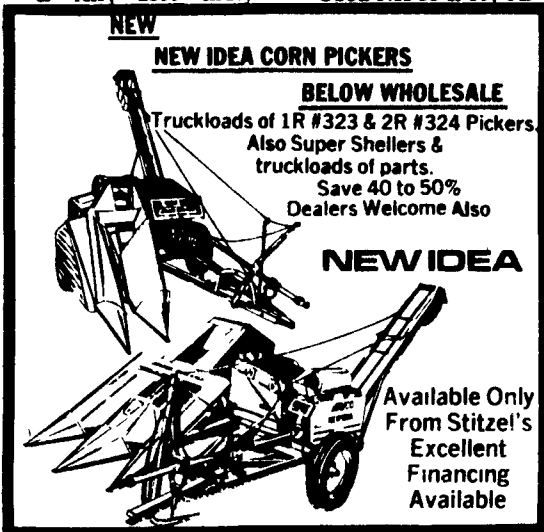
Heavy Front JD blade for 3020 & 4020, etc.; 20 sets of Dual Wheels.

STRAW CHOPPERS: For J.D. 4400, 6600, 6620, 7700; M.F. 510.

MECHANICS SPECIALS: TRACTORS: J.D. 4230 P.S. - Trans; 4020 Tri; 4320 w/Cab.

I.H. 1256 - Motorwork, \$3,950.

CASE 1410 - Motor. AC XT190, clutch, \$3,950; JD 4520 w/Cab, \$6,950; Farmall 1586 w/fire damage cab.



NEW
NEW IDEA CORN PICKERS
BELOW WHOLESALE
Truckloads of 1R #323 & 2R #324 Pickers. Also Super Shellers & truckloads of parts. Save 40 to 50% Dealers Welcome Also

NEW IDEA
Available Only From Stitzel's Excellent Financing Available

White 2-135 CA.; 16A Flail **SOLD**opper; White 2-105 CA. Bearcat 72A Flail Chopper.

MISC. Versatile 500, 4WD, 3 pt. & PTO; M.M. Vista G1000; Long 460 Dsl., 4WD, w/loader.

TRACTORS & Equip. Just Traded: NH 1495 D, Hydro w/Half Cab; NH 258 Rake, Hydraulic Drive & Dolly Wheel; NH 499 Hydro Swing Haybine; Martin Scavenger II S-1666 Tandem Axle Spreader; NH 1010 Bale Wagon; NH 278 Baler w/Thrower; JD 38 Chopper; JD 843 LP Corn Head; JD 2840; JD 3960 Chopper; JD 2940 MFWD; NH 258 Rake; NH 282 Baler w/Thrower; NH 282 No thrower; IH 3488 CA Hydro, hard to find; JD 4440 CA, QR; Case 580 Dsl. Loader Backhoe.

CORNPICKERS: (Used) 325-2RN w/8 or 12 Roll Husker, Shellers & Super Shellers; (Used) 324-2 RW w/8 or 12 Roll Huskers;

TRACTORS	JULY SPECIALS	
Farmall 504 Dsl w/3 pt		\$ 1,950
JD 2010 Gas Tri P S		\$ 1,925
JD 5020 w/Duals as is		\$ 4,900
JD 3020 D Tricycle		\$ 4,950
JD 4620 w/Cab Good Cond		\$ 9,500
JD 6030 Cab & Air (175 HP) Nice		\$12,950
JD 2940 w/Hi Lo 2 Post R/G		\$12,500
IH 706 Gas Tri F H		\$ 3,250
IH 706 D WFE 3 pt		\$ 4,950
IH 1206 W F E		\$ 5,950
Case 1976 1370 C A P S Duals		\$ 9,950
M F 1100 Diesel w/Multi Power		\$ 3,750
COMBINES		
J D 6600 Gas w/Cab (Needs Some Motor Work)		\$ 4,500
I H 203 w/13' G SOLD C H		\$ 1,950
IH 76 915 D, Cab & Air,		
Turbo Hydro w/15' grain		\$12,800
NH TR70 Cab & Air Hydro Good Condition		\$11,750
M F 510 Diesel w/Cab & Q T Grain		\$ 5,875
TILLAGE EQ.		
New Landoll 230 22 Hyd Fold Chisel		
List 11 000+		\$ 7,450
New DMI 12 Chisel Pull Type		\$ 2,350
Glencoe 13 Chisel		\$ 1,250
Ford 142 6x Spring Reset Plow		\$ 1,750
IH 700 6x Spring Reset		\$ 1,975
Kewanee Wing Disk 20		\$ 1,350
AC 26' Folding Disk		\$ 3,450
MISC.		
New JD 8300 16x10 DD Drill		\$ 3,500
IH 430 Baler w/Thrower		\$ 7,750
MF 12 Baler w/Thrower		\$ 975
Fox Super D Self/Propelled Chopper w/2RW Corn head		\$ 4,000
IH 5 Flail Chopper		\$ 595

Largest Selection Of Farm Equipment In The East