

Philadelphia Vegetables

Wednesday, July 1, 1987
ASPARAGUS ABOUT STEADY WA 30-lb crate WAExtra Fancy large 42.00-45.00 standard 40 00 CA 30-lb carton large 42 00-45 00 MEXICO 13.5 lb carton large 20 00 large 18 00 standard few 18 00 12-lb carton bunched 12s extra-large & large 20 00*.
BEANS LOWER various bushel containers Round Green type unless otherwise stated NJ 600-700 MD 700 DE 400-500*.
BEETS NJ crate bunched 12s 500-600 topped bushel basket 800 OH carton bunched 12s 5-550*.
BROCCOLI ABOUT STEADY carton bunched CA 14s 950-10 50 18s 10.00-11.00 mostly 10 50-11 00 MI 18s 500-600*.
CABBAGE SLIGHTLY HIGHER 1-3/4 bushel carton & crate medium Green unless otherwise stated NJ 500-600 mostly 500 small 400-500 Savoy 500-600 Red 800-10 00 mostly 800-900 small 700 NC few 500*.
CARROTS ABOUT STEADY 48-1 lb film bags in film sacks CA medium-large 850-950 mostly 900 FL medium 8-850 50-lb sacks loose jumbo CA 15 00- 16.00 carton bunched 24s CA 10 50-11 00*
CAULIFLOWER SUPPLIES LIGHT CA carton film wrapped 12s 13 00-14 00 mos 14 00*
CELERY ABOUT STEADY crates & cartons CA 2 dozen 11.00-13 00 2-1/2 dozen 12 00-13 00 3 dozen few 13 00 FL 2 dozen 900-11 00 2-1/2 dozen 900-11 00 3 dozen 10 00-11 00 MI carton Hearts film wrapped 24s 14 00*.
CHINESE CABBAGE NJ celery crate 700 Nappa 800 OH celery crate 600 CA 50-lb carton Nappa 12 00-13 00 30-lb carton Bok Choy 600*.
CORN ABOUT STEADY wirebound

crates approximately 4-1/2 dozen Yellow FL 500-600 NJ 550-600 small 300-400 GA 500-700 NC 550-650 White FL 700-900 NJ small 450-600 GA 7-750 NC 650-700 MD small 500-600*.
CUCUMBERS ABOUT STEADY 1-1/9 bushel crates & carton waxed medium unless otherwise stated NC 600-700 fair quality 400-500 VA fair quality 400-500 mostly 400 NJ 600 fair quality 400-500*.
EGGPLANT SUPPLIES INSUFFICIENT TO QUOTE*.
ENDIVE ABOUT STEADY NJ 1-1/9 bushel crates & cartons 6-650 precooled 700-800 NY 1-1/9 bushel crates 400-500 mostly 500 OH 11-1/9 bushel cartons precooled 600-800 CA carton 24s 11.00*.
ESCAROLE ABOUT STEADY NJ 1-1/9 bushel crates & cartons 6-650 precooled 750-800 NY 1-1/9 bushel crates 400-500 mostly 500 OH 1-1/9 bushel cartons precooled 600-700 CA carton 24s 10.00*.
GREENS ABOUT STEADY crates approximately 1-1/2 bushel bunched unless otherwise stated NJ Collards, Turnip Tops, Mustard & Rape 500 Kale 550-600 PA Collards 5-550 Kale 600 Rape 500 OH Kale 550 CA carton 24s Red Kale 12 00-13 00*.
LEEKs NJ crate bunched 12s 700-900 CA carton bunched 12s 850*.
LETTUCE-ICEBERG HIGHER carton 24s unless otherwise stated CA 11 00-13 00 mostly 12 00 film wrapped 11 00-12 00 30s 900 10 00 mostly 10 00*
LETTUCE-ROMAINE ABOUT STEADY CA 24s cartons 950 11.00 mostly 10.00- 11 00 crate 12 00-13 00 OH carton 24s 500-600 NJ carton 24s 500-600 NY carton 24s 500-600*.
LETTUCE-OTHERS Big Boston carton 24s CA 12.00 OH 600-700 mostly 600 NJ crate 24s 500 Bibb OH basket 24s 400-500 mostly 500 Leaf carton 24s CA 15 00 Red 10 50-12 50 mostly 11.00 OH 700-800*

LETTUCE-PROCESSING No supplies*.
OKRA GA buhmpsr small-medium few 20.00*.
ONIONS-GREEN ABOUT STEADY crate bunched 36s NJ 700 carton bunched 48s CA 10.00 OH 8-850*.
PARSLEY SUPPLIES LIGHT bunched 5 dozen curly unless otherwise stated OH crate 12 00-14 00 Plain 14 00*.
PEAS-GREEN NO SUPPLIES*.
PEAS-SOUTHERN SUPPLIES INSUFFICIENT TO QUOTE*.
PEAS-SUGAR ABOUT STEADY 10-lb carton per lb CA 240-250*.
PEPPERS ABOUT STEADY 1-1/9 bushel crates & carton California Wonder type Green unless otherwise stated GA Extra-large 900-10.
 00 large 600-700 mostly 650-700 medium 450-500 small 350-400 NC large 800 medium 600 Cubanelle small-medium 400-500 NJ extra-large few 10 00-11 00 CA extra- large 11.00-12.00 large 800-900*.
RADISHES ABOUT STEADY OH carton Red 30-6 oz film bags 5-550 14-1 lb film bags 500 bunched 24s 600*.
SPINACH Savoy type NJ bushel basket & 1-1/4 bushel crates 800-10 00 PA 1-1/4 bushel crates 10 00 NY carton clipped 10.00 Flat type CA carton bunched 24s 10.00*
SQUASH ABOUT STEADY 1/2 & 5/9 bushel crates & cartons NJ Zucchini small-medium 250-400 mostly 3-350 medium 200-300 Yellow Straightneck small-medium 3-350 GA 1-1/9 bucinis Spaghetti type & Butternut 12 00 Acorn 800*
SWEET POTATOES SUPPLIES INSUFFICIENT TO QUOTE*
TOMATOES LOWER 25-lb carton Pink to light Red US Combination grade or better unless otherwise stated Sales by Repackers

FL 5x6s 14.00 6x6s 11.50 Sales by Others FL 5x6s 12.00-13.00 mostly 12 00 6x6s 10.50- 12.00 mostly 11.00 6x7s few 7.50-8.00 fair quality 5x6s 10.00-11 00 6x6s 900-10.00 SC 5x6s 12.00-13 00 6x6s 11 00 fair quality 5x6s 10.00-11 00 6x6s 900-10.00 GA fair quality 5x6s 900-10.00 one lot 600 6x6s one lot 600 NJ large 25.00-30.00 fair quality 20 00 medium fair quality 12 00 CA 5x6s 12 00-13 00 6x6s 10.00-11.00 Cherry type 12-1 pint flats FL 600-700 NJ 600-700 CA 800*.
TURNIPS NJ topped 25-lb mesh bag medium 400*.

80.00-94, 90-120 lbs. 94.00-122.00; few Holstein heifers 90-100 lbs. 83.00-100.00.
HOGS 229...Barrows and gilts \$2 to \$3 lower. US No. 1-2 210-230 lbs. 60.50-60.75, 1-3 210-245 lbs. 59.85-60.50, 2-3 210-260 lbs. 57.00-59.10, lot 2-4 200 lbs. 56.00, 1-3 205-210 lbs. 57.50-58.75. US No 1-3 290-500 lbs. sows 46 00-47.50, one 48.50, 490-655 lbs. 44.25-47.00. Few Boars 41.50-42.00, light weights 46.50-48.50.
FEEDER PIGS 0..No Market Test
SHEEP 4...Choice, two 55 lbs. spring sl. lambs 64.00&67 00. Slaughter ewe, one 28 00.
GOATS 0...No Market Test.

Lebanon Valley Livestock Auction

Fredericksburg, Pa.

Tuesday, June 30, 1987

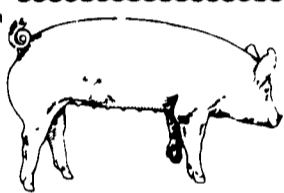
CATTLE 139...PDA...Compared with last Tuesday's market. Slaughter cows mostly \$2 lower. Choice sl. steer, individual 64 25, few Good & Choice holsteins 54.75-55, few Standard 54.00-56.25, Utility, individual 43.00. Few Choice sl heifers 58 75-65.25, few Good 51.25-58, few Good & Choice holsteins 46.75-54.75, few Standard 46.75-49.85, two Utility 43.75&45.75. Breaking Utility & Commercial sl. cows 47-48.60, few 50.85, Cutter & Boning Utility 43.00-47, few 48 25, Canner & Low Cutter 40-42.50, few down to 38 00, few Shells down to 35 00. Standard & Good sl bullocks 54.25-56 85 Yield Grade No 1, 1250-2005 lbs. sl. bulls 54 00-58 25, one 59 25, one No. 2 1810 lbs. 51 75. Feeder Cattle. Few Large Frame No 2, 435-820 lbs heifers 45.00-50 50.
CALVES 230...Choice vealers, two 91.00, few Good 85.00-91, Standard and Good 80-100 lbs. 74.00-83, 70-80 lbs. 68.00-75, Utility 60-90 lbs. 55 00-65 00. Farm Calves: Holstein Bulls 80-90 lbs.

St. Louis Cattle, Hogs

Wednesday, July 1, 1987

CATTLE AND CALVES: 100 (SLTR) INSUFFICIENT VOLUME SLAUGHTER STEERS AND HEIFERS TO ESTABLISH A MARKET SLAUGHTER SUPPLY CONSISTS OF COWS TRADING ACTIVE COWS 1 00 HIGHER.
SLAUGHTER CLASSES COWS CUTT, UTIL, COMM BULK HI DRESS % LO DRESS % BREAKING 2-4 42 00-45 00 BONING 1-2 45 00-46 00 46 00-47 00 CANN & CUTT 1-2 39 00-43 00 SHELLY CANNER 1-2 35 00 39 00 DS CB 42 00 45 00 CD 44 00-47 00 CG 42 00-46 00 CII 38 00-42 00
CLOSE HOGS: UNCHANGED B 60 00-60 00 C 60 00-60 00 G 59 50-60 00 H 59 75-60 00 J 59.75-60 00 O NONE P NONE VV 48 00-49 00 WW 45 00-47 00 XX 44 00-44 50 YY 44 00-44 50 ZZ 47 00-47 00

ROPE IN SOME EXTRA CASH!
 Advertise With A Lancaster Farming CLASSIFIED AD
 Phone 717 394 3047 or 717 626 1164



EMERY'S BUYING STATION

OPEN TO RECEIVE YOUR MARKET HOGS

AT THE GREEN DRAGON MARKET RD 4, EPHRATA, PA 17522 1 MILE NORTH OF EPHRATA ON NORTH STATE STREET.

HOURS: MONDAY, TUESDAY, and WEDNESDAY 7:00 A.M. to 11:30 A.M. 215-458-5677 Residence 717-733-9648 Office

215-458-5677 Residence 717-733-9648 Office

YOU ARE PAID FOR YOUR HOGS IMMEDIATELY

Ken & Lois Emery, Proprietors

KING'S AUCTION KIRKWOOD
 Hay, Straw and Grain Auction
EVERY TUESDAY 12:00
 Located Rt. 472 5 miles south of Quarryville or 6 miles north of Oxford at Shaub's Auction House
 Lloyd H Kreider, Auctioneer AU-000513L
 No out of state checks
ALL TRUCKERS AND FARMERS WELCOME
NOTICE MOVING
 Will be moving 1/2 mi. north of present location at Corner of 472 & Noble Rd. at Rouse Tobacco Station. First sale on new location July 14, 1987.
 Lunch Available

FIELD DAY FEATURES- SOYBEAN INTERSEEDING

AT TWO ON-FARM RESEARCH DEMONSTRATION SITES

The Rodale Research Center, in conjunction with the Pennsylvania Chesapeake Bay Program efforts, will host a Farmer Field Day on Wednesday, July 8 at two Lancaster County farms.

WHAT: This field day will demonstrate new cost cutting techniques that farmers can apply on their own farms. Farmers interested in reducing costs, controlling erosion and reducing herbicides are invited to attend these demonstrations:

- * interseeding soybeans into winter and spring barley...
- * overseeding hairy vetch into spring barley

You will have a chance to ask questions on how interseeding may work on your farm.

WHEN: WEDNESDAY, JULY 8

WHERE: Lloyd Lefever Farm Jim Nissley Farm
 RD 2, Box 328 127 Aberdeen Road
 Chestnut Grove Road Elizabethtown, PA 17022
 Conestoga, PA 17516 2:00 p.m.
 10:00 a.m.

FOR MORE INFORMATION AND DIRECTIONS TO THE FARMS CONTACT:

Ben Zimmer (717) 299-7557
 Adel Weinberg (215) 683-6383

Keystone Mills
In 2 Locations To Serve Your Sow Contract Needs.
Ephrata Location Servicing Northern Maryland and Delaware, Central and Southeastern Pennsylvania
Romulus N.Y. Location Servicing Northern Pennsylvania and Finger Lakes region of New York
WANTED
Good Quality Sow Contracts to Finish or for Feeder Pig Production.
 * Minimum Size 100 Sows
 * Unit Designed To Our Specs
 * Purina Feeding Program
 * PIC Breeding Stock
Come Grow With Us!
KEYSTONE MILLS
Serving Agriculture Since 1894
 R.D. 3 Ephrata, PA 17522 (717) 354-4616
 1975 Route 336 Romulus, NY 14541 (315) 549-2578
 * Trademark Ralston Purina Company