



Livestock market and auction news

Shenandoah Valley Livestock

Harrisonburg, Va.
Saturday, June 20, 1987

Report supplied by auction

FEEDER CATTLE TREND:
Mostly Steady. **STEERS:** M&L-1 300-500 lbs. 78.00-85.50, 1 lot 88.00; 500-700 lbs. 69.00-75.00; 700-1000 lbs. 66.25-67.00; Holstein 300-600 lbs. 63.00-66.00; S-L&M&L-2 300-500 lbs. 67.00-74.00; 500-700 lbs. 65.50-70.50.
FEEDER BULLS: M&L-1 300-500 lbs. 69.00-77.50; 500-700 lbs. 63.50-72.00; S-L&M&L-2 300-500 lbs. 66.00-69.00.

HEIFERS: M&L-1 300-500 lbs. few 67.00-75.00; 500-700 lbs. 65.00-70.50.

STOCK COWS: Baby Calves: 51.00-119.00.

SLAUGHTER CATTLE TREND: Heifers: Choice 2-4 2 at

65.00; Standard 51.00-51.75.

SLAUGHTER COWS TREND: Steady. Utility & Commercial 2-4 43.50-47.75; Canner & Cutters 1-3 38.75-43.50.

SLAUGHTER BULLS: 1&2 53.75-59.25.

LAMBS: Trend 4.00 lower. Blue O High Choice & Prime 79.00; Red O Choice 73.00; Feeder Lambs Choice 70.00; Slaughter Ewes 20.50-27.50.

HOGS: US 1-3 200-240 lbs. 60.00, 1½ higher; Sows 1-3 40.00-46.75; Boars 39.50.

VEALS: Good 70.00-78.00.

Virginia Weekly Livestock

Thursday, June 25, 1987

WEEKLY REVIEW IN VIRGINIA MARKETS IN REVIEW, JUNE 18-24, 1987. FEEDER CATTLE IN VIRGINIA AUCTIONS AND THE MIDWEST WERE STEADY TO \$2.00 HIGHER FOLLOWING SLAUGHTER CATTLE PRICES

STEADY TO \$1.00 HIGHER CARCASS BEEF PRICES WERE MOSTLY STEADY TO \$1.00 HIGHER WITH THE BOXED BEEF CUT OUT VALUE OF CHOICE 23. 550-700 LBS CARCASSES AT \$113.39/CWT TUESDAY THIS WAS 24 CENT LOWER THAN LAST WEEK COWS AND BULLS IN VIRGINIA AUCTIONS AND THE MIDWEST FOLLOWED COW BEEF PRICES STEADY TO \$2.00 HIGHER BEEF PRODUCTION LAST WEEK WAS DOWN 4 PERCENT FROM THE PREVIOUS WEEK AND 6 PERCENT BELOW A YEAR AGO AS AVERAGE WEIGHTS WERE 7 LBS LIGHTER VEAL AND CALF PRICES AT VIRGINIA AUCTIONS FOLLOWED EAST COAST CARCASS PRICES STEADY TO \$2.00 LOWER SLAUGHTER LAST WEEK WAS UP 3 PERCENT FROM THE PREVIOUS WEEK BUT 14 PERCENT BELOW A YEAR AGO WHEN AVERAGE WEIGHTS WERE 7 LBS LIGHTER LAMB PRICES IN VIRGINIA AUCTIONS AND THE MIDWEST MOVED WEAK TO \$4.00 LOWER WHILE EAST COAST CARCASS PRICES WERE AS MUCH AS \$1.00 LOWER SLAUGHTER WAS DOWN 2 PERCENT FROM THE PREVIOUS WEEK AND 2 PERCENT BELOW A YEAR AGO AVERAGE WEIGHTS WERE UNCHANGED HOG PRICES IN VIRGINIA AUCTIONS FOLLOWED MIDWEST PRICES HIGHER EARLY AND CLOSING STEADY TO 1.00 LOWER PORK PRODUCT PRICES RANGED STEADY TO \$5.00 HIGHER BUT CLOSED STEADY TO \$3.00 LOWER PORK PRODUCTION LAST WEEK WAS DOWN 4 PERCENT FROM THE PREVIOUS WEEK AND 3 PERCENT BELOW A YEAR AGO WITH AVERAGE WEIGHTS 2 LBS HEAVIER THE RICHMOND HOG MARKET CLOSED 50 CENT HIGHER THAN LAST WEDNESDAY WITH BARROWS AND GILTS 14 200-240 LBS AT \$60.00-60.50/CWT TOTAL RECEIPTS FOR THE WEEK 263 HEAD THE SOUTHEAST VIRGINIA HOG MARKET CLOSED 50 CENT TO \$1.00 HIGHER THAN LAST

WEDNESDAY WITH BARROWS AND GILTS 14. 200-240 LB AT \$61.00-61.50/CWT TOTAL RECEIPTS 9135 HEAD COUNTRY POINT HOGS, JUNE 24, 1987 AT HARRISONBURG LYNCHBURG AND TAPPAHANNOCK HOG PRICES WERE 50 CENT TO 1.00 HIGHER THAN LAST WEDNESDAY AT \$59.00-61.50/CWT SOWS RANGED FROM \$36.00-42.00/CWT AND BOARS BROUGHT \$32.00/CWT

SLAUGHTER COWS 24%. SLAUGHTER BULLS 3%. CALVES & VEALERS 4%. SLAUGHTER STEERS AND HEIFERS 1%. FEEDERS UNDER 600 LBS 50% FEEDERS OVER 600 LBS 18%.

PRICE RANGES FOR VIRGINIA AUCTIONS
SLAUGHTER CATTLE CHOICE STEERS 2-3 1000-1150 LBS 66.00-70.00 CHOICE HEIFERS 2-3 900-1100 LBS 62.25-66.00. CHOICE HEIFERS 2-3 1100 LBS & OVER 63.75 UTILITY & COMMERCIAL COWS 40.00-54.50 BULLS 1-2 900-1300 LBS 48.75-58.25. 1-2 1300-1600 LBS 52.25-63.50 1-2 1600 LBS & OVER 50.00-61.00 SLAUGHTER CALVES AND VEALERS VEALERS HIGH CHOICE AND PRIME 100-250 LBS \$4.50-98.00 FEW 100.00 GOOD AND CHOICE 100-250 LBS 70.00-88.50 CALVES GOOD AND CHOICE 250-500 LBS 65.00-79.00 SLAUGHTER LAMBS HIGH CHOICE & PRIME 95-125 LB SPRING 74.50-80.50 BUCK 70.00-73.00 SLAUGHTER HOGS US 2-4 200-250 LBS 57.25-63.50 SOWS US 1-3 300-500 LBS 40.00-49.40. 500 LBS & OVER 42.00-46.00 FEEDER CATTLE STEERS. MEDIUM 1-3 300-500 LBS \$3.00-96.00 500-700 LBS 69.00-80.50 HEIFERS MEDIUM 1-3 300-500 LBS 62.00-73.00

Four States Livestock

Hagerstown, Md.
Wednesday, June 24

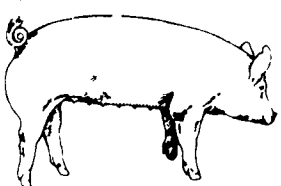
Report supplied by Auction

SLAUGHTER: Fed Steers: Good Run. Choice to Prime 73.00-76.00; Good to Choice 65.00-72.00; Good 60.00-65.00. Heifers- Choice to Prime 68.00-72.00; Good to Choice 60.00-67.00; Medium to Good 55.00-60.00. Cows: Good run, steady to \$1 higher; High Yield 49.00-52.00, 1 at

56.00; Utility 44.00-48.00; Big Middle 41.00-44.00; Cannery & Cutters 42.00-45.00; Shelly 41.00 down. Fat Bulls: Steady Good 55.00-58.00; Medium 53.00-55.00. Veal Calves: Choice few to 80.00; Good 70.00-75.00; Medium 60.00-70.00; Farm Bulls 100-125 lbs. 90.00-105.00; 95-100 lbs. 88.00-95.00; Light Calves 78.00-88.00; Weak Calves 77.00 down. Lambs \$3 lower; Choice 72.00-75.00; Good 65.00-70.00; Medium 25-60 lbs. 55.00-66.00.

STOCKER: Mostly steady. Good 68.00-73.50; Medium 62.00-67.00; Culls 61.00 down. Steers: 600-850 lbs. Choice 67.00-72.00; Good 60.00-66.00; Medium 69.00 down. Heifers (all weights) Choice 70.00-76.00; Good 65.00-70.00; Medium 58.00-64.00. Open Dairy Heifers 45.00-52.00. Springing Heifers Small To \$485.00. Pigs, Hd. 195 head; 25-45 lbs. 25.00-45.00; 45-60 lbs. 49.00-54.00. Shoats by lb. 150-200 lbs. 52.00-58.00. Stock Boars 70-250 lbs. 48.00-49.50. Slaughter Hogs steady prices. 215-240 lbs. 60.00-61.85; 240-260 lbs. 59.00-60.00; 290-350 lbs. 50.00-54.00. Sows \$3 higher 300-450 lbs. 47.00-49.00; 450-600 lbs. 43.00-47.00; Heavy Boars to 42.50. Bulls: Choice 71.00-75.00; Good 65.00-70.00; Medium 60.00-64.00.

Open every Wednesday 8 a.m. to receive livestock.



EMERY'S BUYING STATION

OPEN TO RECEIVE YOUR MARKET HOGS

AT THE GREEN DRAGON MARKET
RD 4, EPHRATA, PA 17522
1 MILE NORTH OF EPHRATA ON NORTH STATE STREET.

HOURS: MONDAY, TUESDAY, and WEDNESDAY 7:00 A.M. to 11:30 A.M.
215-458-5677 Residence
717-733-9648 Office

215-458-5677 Residence
717-733-9648 Office

YOU ARE PAID FOR YOUR HOGS IMMEDIATELY

Ken & Lois Emery, Proprietors

CRIPPLED AND DISABLED

Cows, Steers & Bulls
For Slaughter Under
USDA Inspection

Call Wayne Taylor
717-866-6289
215-286-9400

Lebanon, Berks,
Lancaster & Chester
Counties

RCMA

FARMERS HELPING FARMERS...

20 Days To Sign Up

- Increase income through over-order pricing
- No Dues
- No Assessments
- No Change in Handler
- Act Now - July 10 Deadline

— For more information call —

State Coordinator Harold Ely **717-278-1259**
or Ed Anna, executive director at **716-344-1463**

Regional Cooperative Marketing Agency
26 Harvester Ave., Batavia, N.Y. 14020

YOU CAN'T ARGUE WITH SUCCESS

You can't argue with success. When a company solves your problems, supplies the best equipment on the market, and doesn't break the budget doing it - that's success.

US Agri-Systems has been doing just that for 15 years. They tackled the toughest jobs, when others were only interested in selling something. When you want success - contact US AGRI-SYSTEMS Toll Free at 1-800-222-2948.

FIELD DAY FEATURES- SOYBEAN INTERSEEDING

AT TWO ON-FARM RESEARCH DEMONSTRATION SITES

The Rodale Research Center, in conjunction with the Pennsylvania Chesapeake Bay Program efforts, will host a Farmer Field Day on Wednesday, July 8 at two Lancaster County farms.

WHAT: This field day will demonstrate new cost cutting techniques that farmers can apply on their own farms. Farmers interested in reducing costs, controlling erosion and reducing herbicides are invited to attend these demonstrations:

- * interseeding soybeans into winter and spring barley...
- * overseeding hairy vetch into spring barley

You will have a chance to ask questions on how interseeding may work on your farm.

WHEN: WEDNESDAY, JULY 8

WHERE: Lloyd Lefever Farm Jim Nissley Farm
RD 2, Box 328 127 Aberdeen Road
Chestnut Grove Road Elizabethtown, PA 17022
Conestoga, PA 17516 2:00 p.m.
10:00 a.m.

FOR MORE INFORMATION AND DIRECTIONS TO THE FARMS CONTACT:
Ben Zimmer (717) 299-7557
Adel Weinberg (215) 683-6383

SWINE PRODUCTION SALES AND SERVICE

Feeding Programs
And Services To
Meet Your Individual
Needs

Computerized
Record Keeping
System

Supplying Farm Fresh
Feeder Pigs

Marketing and Hedging
Services

Marketing of Genesis
Breeding Stock

Grain Purchasing
And Exchange

Developing Individual
Financial Programs

Quality Products And Services - Working For YOU

419 West High Street
Elizabethtown, PA 17022

Shippensburg
(717) 532-7845

PA Toll Free
1-800-468-5524

Elizabethtown
(717) 367-1525