

# Tree Fruit Field Day Slated

UNIVERSITY PARK — Tree fruit growers will have the opportunity to see the latest in fruit production research at a Grower Field Day, scheduled for July 16 from 9 a.m. to 3:30 p.m. at Penn State's Fruit Research Laboratory in Biglerville.

Penn State researchers, graduate students and staff will be on hand to discuss progress made in fruit production research.

The entomology faculty will present results of research being conducted in the laboratory and in the field. Presentations will focus on three major tree fruit pests: the tufted apple budmoth, the European red mite and the lesser peach tree borer. Areas of special interest will include monitoring for insecticide resistance, sex pheromone trapping, economic injury levels and the effect of in-

sect damage on peach tree winter hardiness.

Horticultural research areas will focus on trickle irrigation in orchards, factors affecting peach tree winter hardiness, apple and peach rootstock evaluations, use of plant growth regulators in apple orchards, apple cultivars for processing and orchard nutrition.

In plant pathology, emphasis will be on field evaluations designed to determine how sterol-inhibiting fungicides act on the pathogens that cause apple scab, apple powdery mildew and brown rot of peaches, cherries and plums. Growers will see the latest developments in orchard disease predictors and will hear about research findings in the management of fireblight in orchards. The pre- and post-plant soil treatments on nematode/virus

disease control in peaches will be shown.

Tours and short presentations will highlight several important problems, and visitors will have the opportunity to discuss specific problems with researchers.

Lunch will be served by the Fruit Research Lab staff. The cost is \$4 per person. Mail lunch reservations no later than July 10 to Peg Shaffer, Penn State Fruit Research Lab, P.O. Box 309, Biglerville, PA 17307.

The Fruit Research Laboratory is one of three field research laboratories operated by Penn State's College of Agriculture. The laboratory is located off University Drive, near Biglerville in Adams County. Parking and admission are free.

For more information about the Grower Field Day, contact Peg Shaffer, (717) 677-6116.

# ATV Class Scheduled

NEWARK, Del. — A free ATV rider class will be offered Wednesday, July 22, at the Delaware State Fairgrounds in Harrington.

Open to riders of all ages, the class will include a safety inspection and a chance to drive on a special training course. The class will begin at 8:30 a.m., and parents of drivers are welcome to attend.

"By taking eight drivers through at a time, we think we can handle up to 50 participants," says Ron Jester. The University of Delaware extension safety specialist is coordinating the event.

Jester says participants must wear appropriate safety gear, including a helmet, goggles, long-

sleeved shirt, long pants and sturdy footwear. The driving course will include both a serpentine track and a figure-8 track, a ditch bank, an obstacle course, a restricted course with limited space and sharp turns, hill maneuvers, an acceleration lane and an emergency braking lane.

Twenty judges and assistants will be stationed along the course to analyze the performance of the drivers.

To register for the class, ATV owners can obtain registration forms from Delaware county extension offices and local ATV dealers. Registrations will be accepted until July 21.

## ARMSTRONG FARM MUSCLE



**All Orders Over \$250 Delivered Free To Your Farm!**  
(Orders Under \$250 Only A Small Extra Fee)

**We Install Tires On Your Farm**

- Centre Hall • Williamsport
- Sunbury • Allentown
- North Penna. • New Jersey
- Northern Maryland

**Ask About Our Guarantee On Rear Tires Strongest In The Country**

**OFFER EXTENDED...**

**FREE MOUNTING ON Super Hi-Power Lug Radials**

14 9R28 10 Ply	\$325 00
16 9R28 10 Ply	\$399 00
18 4R34 6 Ply	\$399 00
16R38 6 Ply	\$429 00
18 4R38 6 Ply	\$459 00
18 4R38 8 Ply	\$489 00
18 4R26 10 Ply	\$449 00
20R34 8 Ply	\$639 00
20 8R38 8 Ply	\$649 00
20 8R38 10 Ply	\$699 00

## ARMSTRONG FARM MUSCLE

### ARMSTRONG FARM TIRES

**Hi Power Lug**

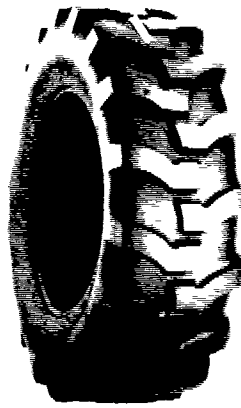


11 2x24 4 Ply	\$106 00
11 2x24 6 Ply	\$125 00
14 9x24 4 Ply	\$161 00
14 9x24 6 Ply	\$172 00
14 9x24 8 Ply	\$200 00
16 9x24 6 Ply	\$200 00
16 9x24 8 Ply	\$220 00
14 9x26 6 Ply	\$180 00
18 4x26 6 Ply	\$247 00
23 1x26 8 Ply	\$525 00
11 2x28 4 Ply	\$120 00
12 4x28 4 Ply	\$137 00
13 6x28 4 Ply	\$150 00
13 6x28 6 Ply	\$165 00
13 6x28 8 Ply	\$195 00
14 9x28 4 Ply	\$165 00
14 9x28 6 Ply	\$185 00
16 9x28 6 Ply	\$225 00
16 9x28 8 Ply	\$245 00
16 9x30 6 Ply	\$240 00
18 4x28 6 Ply	\$300 00
18 4x30 6 Ply	\$270 00
23 1x30 8 Ply	\$650 00
24 5x32 10 Ply	\$775 00
16 9x34 6 Ply	\$270 00
18 4x34 6 Ply	\$310 00
18 4x34 8 Ply	\$335 00
20 8x34 6 Ply	\$479 00
20 8x34 8 Ply	\$510 00
23 1x26 10 Ply	\$600 00
23 1x34 8 Ply	\$689 00
11 2x38 4 Ply	\$147 00
12 4x38 4 Ply	\$175 00
13 6x38 4 Ply	\$185 00
13 6x38 6 Ply	\$205 00
14 9x38 6 Ply	\$224 00
15 5x38 6 Ply	\$235 00
15 5x38 8 Ply	\$260 00
16 9x38 6 Ply	\$295 00
16 9x38 8 Ply	\$325 00
18 4x38 6 Ply	\$340 00
18 4x38 8 Ply	\$380 00
20 8x38 8 Ply	\$520 00

**Service Available.... Call For Quote!**

### ARMSTRONG

#### Loader-Dozer



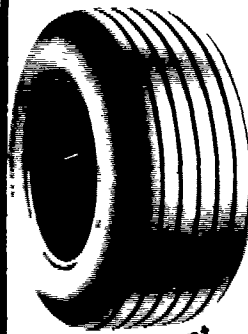
★ TUBELESS ★	
16 9x24 8 Ply	\$265 00
16 9x24 10 Ply	\$330 00
17 5Lx24 6 Ply	\$245 00
17 5x24 8 Ply	\$270 00
15 5x25 12 Ply	\$310 00
17 5x25 12 Ply	\$440 00
19 5Lx24 10 Ply	\$390 00
19 5Lx24 12 Ply	\$430 00
12Lx24 12 Ply	\$500 00
20 5x25 12 Ply	\$643 00
23 5x25 12 Ply	\$960 00
23 5x25 16 Ply	\$1 000 00

### ARMSTRONG

★ TUBE TYPE ★	
4 9x 4 5 Ply	\$200 00
4 9x 4 8 Ply	\$220 00
16 9x24 6 Ply	\$220 00
16 9x24 8 Ply	\$235 00
16 9x24 10 Ply	\$280 00
17 5Lx24 8 Ply	\$240 00
16 9x28 8 Ply	\$260 00
18 4x28 10 Ply	\$340 00
20 5x25 12 Ply	\$250 00
23 5x25 16 Ply	\$280 00
1300x24 10 Ply	\$225 00
1300x24 12 Ply	\$245 00
1400x24 10 Ply	\$255 00
1400x24 12 Ply	\$280 00

### ARMSTRONG

## WAGON TIRES

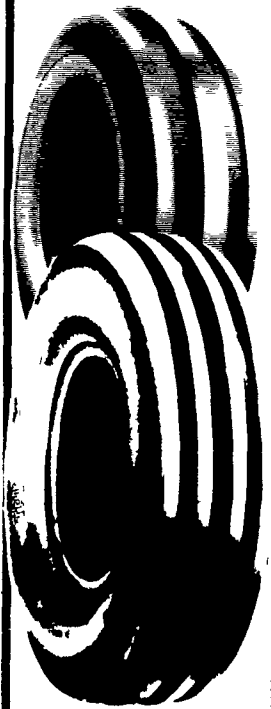


**Special Discount \$5.00 OFF These Prices**

26 1200x12 4 Ply	\$49 00
8 5Lx14 6 Ply	\$41 00
9 5Lx14 6 Ply	\$44 00
9 5Lx14 8 Ply	\$49 50
9 5Lx15 6 Ply	\$42 00
9 5Lx15 8 Ply	\$44 00
11Lx14 6 Ply	\$49 00
11Lx15 6 Ply	\$43 00
11Lx15 8 Ply	\$47 00
11Lx15 10 Ply	\$60 00
000x15 8 Ply	\$60 00
11x16 8 Ply Tubeless	\$50 00
11x16 8 Ply	\$58 00
11x16 10 Ply Tubeless	\$74 00
11 5Lx15 10 Ply	\$75 00
12 5Lx16 4 Ply	\$85 00
12 5Lx15 12 Ply	\$87 00
14Lx16 1 12 Ply	\$140 00
16 5Lx16 1 10 Ply Tubeless	\$160 00
25x 50x15 4 Ply Tubeless	\$44 00
25x 50x15 6 Ply Tubeless	\$49 00
27x 50x15 4 Ply Tubeless	\$53 00
27x 50x15 6 Ply Tubeless	\$60 00
27x 50x15 8 Ply Tubeless	\$65 00
31x13 50x15 6 Ply Tubeless	\$88 00
31x13 50x15 8 Ply Tubeless	\$99 00

• WAGON TIRES SHIPPED UPS - NO CHARGE! •

### FRONT TRACTOR Shipped UPS No Charge!



★ 3-RIB ★	
400 12	\$22 00
400 15	\$24 00
400 19 4 Ply	\$29 00
500 15	\$31 00
550 16 4 Ply	\$33 00
550 16 6 Ply	\$36 00
600 14 6 Ply	\$52 00
600 16 4 Ply	\$37 00
600 16 6 Ply	\$41 00
650 16 6 Ply	\$42 00
75L 15 6 Ply	\$50 00
750 16 8 Ply	\$54 00
750 15 6 Ply	\$50 00
750 18 6 Ply	\$64 00
750 20 6 Ply	\$77 00
9 5L 15 6 Ply	\$55 00
9 5L 15 8 Ply	\$60 00
10 00 16 6 Ply	\$80 00
11Lx15 8 Ply	\$75 00
1100 16 8 Ply	\$110 00
4L 16 1 8 Ply	\$160 00

★ 4-RIB ★	
11L 15 8 Ply	\$80 00
10 00 16 6 Ply	\$80 00
10 00 16 (TL) 6 Ply	\$95 00
10 00 16 (TL) 8 Ply	\$106 00
11 00 16 6 Ply	\$108 00
11 00 16 (TL) 6 Ply	\$110 00
11 00 16 8 Ply	\$108 00
11 00 16 (TL) 8 Ply	\$123 00
14L 16 1 (TL) 6 Ply	\$180 00
14L 16 1 8 Ply	\$164 00
16 5L 16 1 (TL) 8 Ply	\$250 00
★ 5-RIB ★	
1100x16 12 Ply Tubetype	\$135 00
1100x16 12 Ply Tubeless	\$150 00

### Small Rear Farm Tires



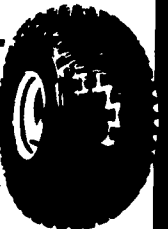
750x20 4 Ply	\$59 95
750x24 4 Ply	\$64 95
8 3x24 4 Ply	\$82 00
9 5x24 4 Ply	\$92 00
11 2x34 4 Ply	\$142 00
11 2x36 4 Ply	\$144 00
12 4x24 4 Ply	\$123 00
12 4x36 4 Ply	\$175 00
13 9x36 6 Ply	\$200 00

### CONTRACTOR F-3

11Lx15 8 Ply	\$80 00
11Lx16 8 Ply	\$92 00
11Lx16 10 Ply	\$98 00
750 800x16 10 Ply	\$80 00
11Lx16 12 Ply	\$130 00
145 75 16 1 10 Ply	\$225 00

### 3 WHEELER TIRES

22x11 00 8	\$38 01
25x12 9	\$54 71
18x950 8	\$30 65



### ARMSTRONG

8 3x24	\$100 00
9 5x24	\$112 00
14 9x24 6 Ply	\$200 00
16 9x24 6 Ply	\$210 00
18 4x16 1 6 Ply	\$245 00
18 4x26 6 Ply	\$360 00
13 6x28 6 Ply	\$225 00

**USED GRASS TIRES IN STOCK!**

### SKID LOADER TIRES

570x12 4 Ply	\$40 00
23 850x12 4 Ply	\$47 00
27 850x15 4 Ply	\$51 00
27 850x15 6 Ply	\$65 00
27 1050x15 6 Ply	\$70 00
700x15 6 Ply	\$65 00
750x15 6 Ply	\$68 00
10 16 5 6 Ply	\$80 00
12 16 5 8 Ply	\$120 00
Steel Shield	
10 16 5 6 Ply	\$95 00

Above Tires Shipped To You FREE

Route 230 West

# MUMMAU TIRE

Mt. Joy, PA.

**Serving Farmers In Penna. New Jersey Northern Maryland and Delaware**

**Out Of State 717-653-1260 In Penna. 1-800-222-1729**