

HOG MARKETS



Lancaster Hogs
Lancaster Stockyards
Sat., June 20, 1987
 Report supplied by auction
 1,124 head.
 US #1 215-250 lbs. 67.00-68.50; US 1&2 200-255 lbs. 65.50-66.75; US 1&3 210-260 lbs. 64.25-65.25; US 2&4 205-255 lbs. 63.00-64.00.
 SOWS: 270-350 lbs. 48.75-55.50; 350-500 lbs. 44.00-48.50; 500-615 lbs. 42.00-45.00.
 BOARS: Under 275 lbs. 48.00-56.00; Over 275 lbs. 38.00-42.50.

Westminster Livestock Auction
State Graded Feeder Pig Sale
Friday, June 19, 1987
 862 hd., last sale 1526. Compared to June 5th, prices were generally steady, except 50-60 lb., which were fully \$5-10 higher. All pigs weighed on arrival and sold per hundredweight.
 1: 25 hd. 41-45 lb. 102.00-106.50; 135 hd. 50-57 lb. 109.00-117.00.
 1&2: 141 hd. 23-37 lb. 95.00-113.00; 117 hd. 41-45 lb. 98.00-114.00; 167 hd. 51-57 lb. 98.00-109.50; 48 hd. 61-66 lb. 90.00-93.50; 21 hd. 70-76 lb. 75.00-81.00
 2: 19 hd. 22-27 lb. 65.00-98.00; 45 hd. 34-38 lb. 85.00-100.00; 61 hd. 43-56 lb. 85.00-91.00.
 Next sale July 3rd 1:30 p.m.

Vintage Hogs

Paradise, PA
Saturday, June 20, 1987
 Report supplied by Auction
 1's and 2's, 210-260 lbs., 60.00-65.00; Sows, 360-530 lbs., 45.25-46.00; Boars, 380-480 lbs., 40.00-41.00
 Note: Vintage Sales Stables, Inc. will not be having a Hog Sale on July 4

New Holland Hogs

New Holland Sales Stables
New Holland, PA
Monday, June 22, 1987
 Report Supplied by Auction
 786 head.
 Market trend: \$1-\$2 higher.
 Wholesale: 60.00-64.00.
 Retail: 64.00-66.50.
 Sows: 44.00-50.00.
 Boars: 40.00-53.00.

New Holland Feeder Pigs

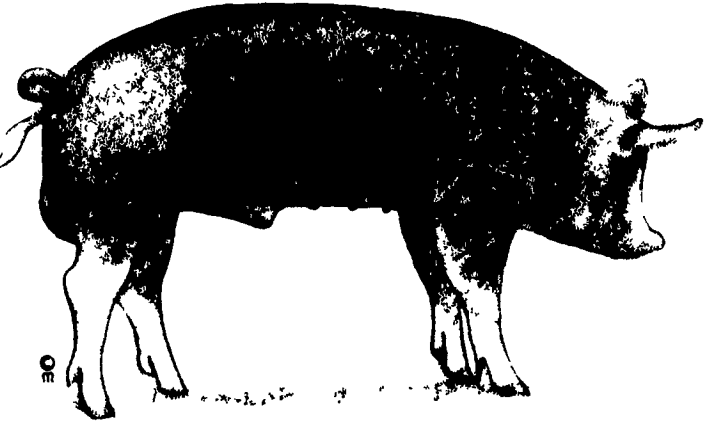
New Holland, PA
Wednesday, June 24, 1987
 Report Supplied by Auction
 1599 head
 1's and 2's, 30-39 lbs., 1.14-1.34, 40-49 lbs., 1.06-1.33; 50-59 lbs., 1.02-1.14.
 2's and 3's, 30-39 lbs., .96-1.30; 40-49 lbs., .96-1.04

Peoria Hogs

Thursday, June 25, 1987
 2200 TRADING FAMILY ACTIVE BARROWS AND GILTS OPENING 50 TO 100 LOWER SUPPLY MAINLY US 1 3 220-250 LBS US 1 3 220-250 LBS 62 00-62 50 60 HEAD 63 00 200-220 LBS 60 00-62 00 SOWS STEADY TO 50 LOWER 17% US 1 2 325-400 LBS 50 00-51 00 400-450 LBS 46 50-47 50 450-500 LBS 44 50-45 50 1 3 500-650 LBS 44 00-44 50

Indianapolis Hogs

Thursday, June 25, 1987
 USDA FLASH HOGS 400 BARROWS & GILTS MODERATELY ACTIVE 50 LOWER SUPPLY US 1 3 225 270 LBS US 1 3 225 260 LBS 62 50-63 00 SOWS MODERATELY ACTIVE. STEADY TO 100 LOWER 12% US 1 3 425-650 LBS 45 00-48 00 BOARS OVER 400 LBS 45 00



GRAIN, CATTLE AND HOG FUTURES MARKETS

(Daily closing bids: Friday, June 19 through Thursday, June 25)

CORN

	FRI.	MON.	TUES.	WED.	THURS.
JUL.	192 ¹ / ₄	182 ³ / ₄	189 ³ / ₄	192 ¹ / ₄	187
SEPT.	198 ¹ / ₂	188 ¹ / ₂	193 ¹ / ₂	196 ¹ / ₂	193 ¹ / ₄
DEC.	206 ¹ / ₂	196 ¹ / ₂	199 ¹ / ₄	202 ¹ / ₄	199 ¹ / ₄
MAR 88	214	204	206 ¹ / ₂	209 ¹ / ₂	206 ¹ / ₂
MAY	217	207	209	212 ¹ / ₂	209
JUL.	218	208	210 ¹ / ₄	231 ¹ / ₂	210 ¹ / ₄

WHEAT

	FRI.	MON.	TUES.	WED.	THURS.
JUL.	263 ³ / ₄	260 ¹ / ₂	262 ³ / ₄	266 ¹ / ₄	263 ¹ / ₄
SEPT.	270 ¹ / ₄	266 ¹ / ₂	268 ¹ / ₄	271 ¹ / ₂	269 ¹ / ₄
DEC.	278 ¹ / ₄	275 ³ / ₄	277 ¹ / ₂	281	278 ¹ / ₄
MAR 88	280 ¹ / ₄	277	280	283 ³ / ₄	281
MAY	278	272 ¹ / ₂	274 ¹ / ₂	277	274 ¹ / ₂

SOYBEANS

	FRI.	MON.	TUES.	WED.	THURS.
JUL.	563 ¹ / ₂	534	543 ³ / ₄	555	545
AUG.	568 ³ / ₄	538 ³ / ₄	548 ¹ / ₄	559 ¹ / ₂	550
SEPT.	574 ¹ / ₄	544 ¹ / ₄	551 ¹ / ₄	561 ¹ / ₄	552 ¹ / ₂
NOV.	582 ¹ / ₂	552 ¹ / ₂	559 ³ / ₄	569 ¹ / ₂	558
JAN 88	592	562	568 ¹ / ₂	578 ³ / ₄	567 ¹ / ₄
MAR.	600	570	576 ³ / ₄	587 ¹ / ₂	577 ¹ / ₂
MAY	609	579	585	594 ¹ / ₂	584 ¹ / ₂
JUL.	610	580	585 ¹ / ₂	596	—

SOYBEAN MEAL

	FRI.	MON.	TUES.	WED.	THURS.
JUL.	177.70	168.10	170.60	175.40	172.60
AUG.	177.20	167.30	169.20	174.10	171.20
SEPT.	178.00	168.00	169.70	174.20	170.50
OCT.	178.20	168.20	169.20	173.00	169.50
DEC.	180.20	170.20	171.70	175.40	171.70
JAN 88	181.00	171.00	172.70	176.20	172.70
MAR	184.00	174.00	176.00	179.00	175.00

CHICAGO CATTLE

	FRI.	MON.	TUES.	WED.	THURS.
JUN.	69.62	64.25	64.77	64.27	—
AUG.	63.62	61.90	65.17	61.85	64.02
OCT.	61.67	63.70	64.05	63.60	61.92
DEC.	63.62	64.40	64.77	64.42	63.55
FEB 88	64.62	65.05	65.22	65.00	64.55
APR.	65.20	64.05	64.50	64.30	65.35

CHICAGO HOGS

	FRI.	MON.	TUES.	WED.	THURS.
JUN.	64.00	58.50	58.70	58.10	—
JUL.	59.22	53.57	54.07	53.57	58.47
AUG.	54.62	44.90	45.72	45.37	54.37
OCT.	45.27	44.82	45.45	45.37	45.82
DEC.	45.40	43.20	43.50	43.50	45.65
FEB 88	44.05	40.90	41.05	41.10	43.82
APR.	41.50	42.70	42.65	42.65	41.20



FUTURES MARKET TRENDS GRAIN AND LIVESTOCK

This market information provided by ACRES ACRES is a copyrighted market information service developed by the American Farm Bureau and available to Pennsylvania farmers on a daily basis through Pennsylvania Farmers Association Farm Management Services For additional market comments and trading service contact PFA Commodity Futures Service (717) 761-2740

ACRES CORN UPDATE: Corn futures settled near the daily highs with gains fostered by spillover strength from the soybean complex. The July option again today recorded the largest gains by closing up 4-1/2 at \$1.92-1/4, with September closing up 3 cents at \$1.9650. Further supporting today's higher prices was outside market strength. Generic certificate premiums today are a little firmer at 106-3/4 to 107-3/4¢

ACRES SOYBEAN UPDATE:

Soybeans settled higher near session highs with the July option closing at \$5.55 up 11-1/4 cents. Prompting late activity was the news that Brazil had temporarily closed export registrations for beans and meal. Doubts about the length of the registration closure, which has been deemed "temporary" by Brazilian officials, prompted long liquidation. The threat of strikes in some ports has created expectations for a further swine in export demand back to the United States.

ACRES WHEAT UPDATE: Wheat futures settled slightly higher across the board in quiet trading, with gains throughout the session prompted by strong foreign currency and precious metals futures. Buying linked to the news that USDA had accepted Egypt's export bonus bid fostered gains, however, the purchase only totalled 150,000 tonnes instead of the 305,000 anticipated. The nearby July option registered the largest gain at 3-1/2 cents closing \$2.6625.

ACRES CATTLE UPDATE: Live cattle and feeder cattle futures closed slightly lower as an expected rally failed to materialize, with sellers being cash connected and professional interests. Buying interest

(Turn to Page A4)

In this issue

Four Sections

Dairy

Dauphin Co DHIA	A22
Berks Dairyman	A25
International Jersey Extravaganza	A28
Dairy Goat Youth Rep	A31
Pa Goat Show	A32
Dairy Sales and Dispersals	A34
Pennmarva Cooperators	A35
Lebanon Co DHIA	A39
Lancaster County DHIA	C 2
Tioga Co DHIA	C 4
York Co DHIA	D 8
Clearfield Co DHIA	D 9

Features

Danish Students	A20.21
Vought Family	D 2
Bedford Co Beef Preview Show	D 5
State Envir Olympics	D10

Columns

Now is the Time	A10
On Being a Farm Wife	B 4
The Micro Way	B 5
Ida's Notebook	B13
Have You Heard?	B18
Farm Philosophy	C 6
Pork Prose	D 2
PSU Farm and Dairy	D14

Home and Youth

Homestead Notes	B 2
Home on the Range	B 6
Lower Dauphin FFA	B 7
Cook's Question Corner	B 8
Kid's Korner	B10
Grassland Environmental FFA	B12
Lancaster Co Dairy Princess	B14
Farm Women News	B16
Sullivan Co Dairy Princess	B17

Departments

Editorial	A10
Farm Calendar	A10
Classified Ads	B22 C 8
Livestock Latest	D 2
Business News	D 6
Mailbox Markets	D15
Public Sales	D18
Sale Reports	D19
Public Auction Register	D21

Walter M. Dunlap and Sons offers all cattle feeders two marketing days — Give us a call for advice and marketing conditions.

MONDAYS OR WEDNESDAYS

Consign With Us — For the Marketing Edge

We are buying feeder pigs

★ ★ ★ Direct off the farm ★ ★ ★
 Give us a call whether you are buying or selling

No Hog Sale Saturday, July 4th

Walter M. Dunlap and Sons

Lancaster Stockyards

Tel. (717) 397-5136

An Old Line Commission Firm Keeping Abreast With The Times