

MAILBOX MARKET FOR SALE

FREE 5 kittens; 3 tigers, 1 black, 1 calico. Litter trained. Very affectionate. Adorable. Some semi-longhaired. New Bloomfield area 717-789-3868.

15 5x38, 8 ply tire and tube, very good tread, \$100 firm. Lycoming Co 717-745-7549 after 6PM

NH 717 Super. harvester \$700 Lanc Co. 215-484-2104

Chill room space for rent. Whole room or just a section. Gap, Lanc Co 717-442-4076 7AM-7PM

Dump hoist for V tag truck sub frame and mountings included \$350. Sch. Co After 6PM 717-682-9459.

1975 Honda CB750. King and Queen seat, plexi-fairing windshield, new tires \$800. York Co 717-456-5020.

Chev truck, 2 ton stake dump body, good running condition. Balto. Co 301-256-5199

Gehl FB99 blower, works well; 1980 Lincoln town car, loaded, 60,000 miles, good condition. Chester Co. After 6, 215-495-7927

Frontend weights for 154 Leyland tractor. Set of three with mounting brackets, brand new \$50 for everything. 814-364-9333.

Two Brahman bulls, one 5 yrs. old. Register. Franklin Co. 717-532-6079.

Four bedroom stone house, breezeway, garage, deck, pool, 30 acres, barn in good condition, pasture, stream. \$99,900 Perry Co. 717-582-4598.

1968 GMC tractor, tandem 238 Detroit 10SP, 40' flat trailer, 4' sides, bows, tarp, nice cond., 10,00x20. Cumb. Co 717-533-4434

Sears utility cement mixer, 1/2HP elec. motor \$150, 21' Renken 83' deep "V" 12510, 85' galv trailer \$10,200 Dauph Co. 717-469-9367

1971 Ford tandem dump, 534 gas engine 5+3 trans, good condition Snyder Co 717-837-0323

Diamond T truck, recent overhaul & clutch, 30,000 wt for 18-20' bed, PTO, good condition \$895 Lanc Co 717-394-5412

Original pony buggy, good condition, double pony harness, new collars. Prices negotiable. Reducing my collection Lebanon, PA 717-272-6819

Pixall hydraulic dump cart with adjustable dumping height. Columbia Co 717-784-9060.

1973 AMC Matador 4DR V8 automatic, rebuilt trans., new exhaust and brakes, good condition North'd. Co. 717-425-3870.

Feeder steers 700 to 800 lb., Ford 3 pt sickle bar mower #501. York Co. 717-244-9042.

IH Cub engine power unit, complete \$250. Luz. Co. 717-636-1976.

Pexto ring and circle shears and power combination rotary machine, plus other sheet metal machinery York Co. 717-792-9282.

AKC sable & white collie pups. York Olympic weights, 300 lb. with curl bar \$300. Adams Co. 717-359-7276

2R AC forage harvester, like new York Co 717-235-2633

York Co AC 82 S side mounted mower, NH Model 66 baler. Best Offer 717-225-5153

MAILBOX MARKET WANTED

12' weeder with tongue. State price and condition. Daniel E Lapp, Jr, 23 Stone Rd., Quarryville, PA 17566

Delivery man to deliver minerals to farmers. 512-625-5099 or write: John E Stoltzfus, 1680 Noble Rd., Kirkwood, PA 17536

MAILBOX MARKET WANTED

Experienced truck driver Full & part time bulk tank farm pick up. Local area 215-593-5240

Good rabbit dog, must run good, handle well, not over 4 yrs LeRoy Malsbury, RD2, Box 365, Freehold, NJ 07728

Used 2 axle trailer, 5x10 deck minimum, 3 ton capacity Reasonable Price. Repairable OK Salem Co 609-935-1863

'67-'72 Ford 4WD pickup w/bad body and/or motor, any condition if gears are good 717-548-3697 Eves

Blue decorated crocks & jugs, old kitchen bowls, etc Please describe or send photo. Henry Cross, Hwy 79, Morganville, NJ 07751

Small stack brooder, in working order, good condition Adams Co 717-794-2352 after 5 p m

Small cooler to use for ice box. Daniel S King, 620 Hackman Road, Lititz, PA 17543. Lanc Co.

F-12 sickle bar mower, also small collie pup. 215-484-0192, leave message please.

Currier Ives, The Celebrated Dog Major Ect, also Darktown Sporting C&I J. Marshall, 3531 Mt Zion Rd. Upperco, MD 21155

Hog feeder, 12 hole or more Aaron F Beiler, 129 S. Maple Ave., Leola, Pa 17540.

Gun safe or good gun cabinet at reasonable price Adams Co Call collect after 6 p m 717-677-7387

Hay elevator, hand portable. Also NH baler & hay wagon Must be good Will travel. 215-795-2628 after 5 p.m

Used 14' steel dump box, 10/12 yard box Wyo Co 717-965-2305

Front cultivators for JD 40W & hay mower 3 pt. or trailer type. Luz Co 717-636-1976.

Rabbit cages, feeders, and water bottles. After 5PM 215-445-4665 ask for Greg

Belly mower for Farmall Cub with hydraulic lift Carbon Co. 717-386-4435

Farm toy tractors and toy trucks. Martin Rishel, RD1, Box 82, Spring Mills, PA 16875. 814-364-9333.

Farm Machinery, Guns, Household, & Antiques

Friday, July 3, 9:30 a.m.
Laceyville, Pa. 1 mi. off Rt. 6
@ Cornell Mfg. Co. Bradford Co.
Due to the death of my husband,

I will offer the following.

FARM MACHINERY: I.H. 706 Tractor-G, Torque, 3 hydraulic system, 2 pt. hitch, tires 18x4x34 w/weights, I.H. #55 chopper-single row w/corn & grass head, 16 ft. #51 self unloading forage wagon, I.H. #56 4 row corn planter, N.H. 68 balers, I.H. #990 haybine, N.H. hayrake on rubber, 2 N.H. flat bed wagons, 25' hay & grain elevator, 2 30' sec. suspended hay elevator w/motor, 30' pipe hay elevator w/motor. I.H. blower-25' pipe-long table, 2 bottom trailer plow, N.H. #213 manure spreader-PTO driven, IH 3 sec. harrow, 1900-10x200 RPM belt driven grain grinder, back blade, hay crimper, Cornell 14' silo unloader, Cornell barn cleaner-clockwise approx. 125', Sunset 545 bulk tank w/compressor, 3 surge milkers, Sunbeam cow clippers, 2 barn fans, 2 feed carts, rebuilt radiator for JD 350 bulldozer wt. 3 services manuals, 2 shallow well pumps, Surge milker pump, SS vats, SS double sink/kitchen, Briggs & Stratton gas engine, 110 volt generator, 8 hp. Sears gas generator, Simplicity rototiller, Sears table saw, concrete cement mixer, 6" drill press, lg. 6" vises, chain hoist, 2 man chain saw, Lombard chain saw, oil-fired torpedo, kerosene heater, new 175 watt pole light, new truck tires- 6-70-15, 20 gal. red barn paint, qty. of new plank- 9'x18', gas tank w/tank, New Sears elec. paint sprayer, 12-2 wire, army tent, & qty. of elec. items & tools, & many smaller items.

1976 Ford Granada

GUNS: Ithaca 16 ga. feather weight, Winchester 30-06 model 54 w/scope, 8mm Army gun, 12 ga. single shot shotgun. 50# Jennings Bow & Arrow.

ANTIQUES: Walnut loveseat & chair, mahogany loveseat & walnut rocker-reupholstered, Kellogg oak wall phone, Rayo, oil and GWW lamps, walnut & depression stands, Depression table, elec. Butter churn, meat block, 10-20 gal. crocks, platform scales, qty. of glassware & dishes, statues, Sev. pieces of Hall china tea Co., iron toys, sm. wooden wheel wagon, cabinet radio, crib & bassinet, Whirlpool wringer washer, Hotpoint dryer, 2 dr. metal wardrobe.

Sale Order: Antiques & small items- 9:30, 12:00 Farm Machinery.

TERMS: CASH TENTS LUNCH

OWNER:

MRS. ANNA TOKACH

AUCTIONEER:

Jerry Burke AU-116
1-717-833-5913



PUBLIC AUCTION

BUILDING SUPPLIES \$527,850.00

WHOLESALE INVENTORY

INCL. \$142,450.00 KITCHEN & BATH

CABINET INVENTORY

TUESDAY, JUNE 30, 1987 AT 10 AM

ON PREMISES

MILLHURST MILLS, FREEHOLD, NJ

Dir.: 3 miles west of Freehold Circle 1 block off Rt. 33 Southside.

KITCHEN & BATH CABINETS

875 Kitchen Wall & Base Cabinets almond & White Formica with oak trim, 478 Raised panel oak, cherry & hickory base & wall cabinets large quantity by Brammer & Excel, 57 Solid wood vanities, 132 Vanities w/tops, 109 Medicine Cabinets, 98 complete toilet sets, 523 pcs., bath accessories, 83 Tub & Shower Doors, 25 Decorator Faucets, 73 Fancy Kitchen Sinks Double & Single colors & Stainless Steel, 87 Range Hoods Color & Stainless Steel, Imported Italian Pedestal Sinks & Bidets, 580 LF Countertop

LUMBER, PLYWOOD, SIDING, PANELING

51 280 BF Lumber 2x4 to 2x10 in 8' to 20' 18,430 SF T1 11 Siding 834 Pcs 1/2" to 3/4" Plywood 588 Pcs Hardwood Plywood Paneling 1388 Planking Kits Oak Pine T&G Etc

TO BE SOLD AT 12:00

38,480 PCS. CABINET PLYWOOD

(IMP. & DOMESTIC) &

MELAMINE FLAKEBOARD

Industrial Plywood & Flakeboard Imported Hardwood Plywood Incl Birch White & Red Oak Walnut Teak Cherry Luan Agathis Maple Meranti Blancata Ash Poplar Hond Mahogany Finland & Baltic Birch in 3/4" 5/8" 1 1/2" & 1 3/4" in 4x8 & 60 x 60 3 000 Pcs Cativo Drawer Slides 1 800 Pcs Melamine Meloguard G1S & G2S White Almond Black 2 600 Pcs Vinyl 1 & 2 sides FC 1 800 Pcs Western Flakeboard 1 to 1 1/8 10 200 Pcs Meloguard White Kitchen Cabinet Components

CARPET

15 238 SQ YDS OF #1 Residential & Commercial Full & Partial Rolls 520 Yds Auto Carpet WALL & FLOOR COVERING

1st Quality in Original Cartons 3 240 Ctn 12x12x1/8 Vinyl Composition Floor Tile in White & Colors 516 Ctn 12x12x3/32 No Wax Vinyl Tile 1132 Ctn Vinyl Slate Tile 4420 Ctn 12x12 Ceramic Mosaic Tile 540 Ctn 8x8 to 16x16 Ceramic Floor Tile, 1260 Ctn 4 1/2x4 1/2 Ceramic Wall Tile in White & Colors, 1210 Gal Ceramic Tile Adhesive & Grout Tile Tools

NAILS 10,350 LBS. ASSORTED TYPES

OAK FLOORING

5840 SF 6" Prefinished Plank Flooring 6080 SF Prefinished Parquet in 6x6, 9x9, 1x3 Unfinished Oak Strip, Exotic Parquet in 12x12

DOORS

83 Prehung, Insulated Steel Entry Doors 210 Assorted Luan/Masonite/White Pine/Louvered, 231 Colonial White Pine Entrance, Patio, 9 Lite Etc 143 Assorted HC & SC Doors

ROOFING

843 Bundles Shingles 2384 Rolls Torch Down Single Ply Roofing

132 ASSORTED LIGHT FIXTURES, 204 TEAK BOAT CRADLES

AT 2:00 PM MEN'S & WOMEN'S WEAR

ITALIAN DESIGNER CLOTHING - FALL, SEASONAL & SUMMER GOODS, \$110,000 WHOLESALE INVENTORY 1103 Ladies Suits, Dresses & Slacks 100% Cotton, Wool, Linen, Poly & Blends, By SANTURA & PAOLI, LORENTZ, JACKCARE, PEZEY, SFIZIO ETC 351 Mens Suits & Sportjackets, 199 Mens Shirts, Silk Ties & Pants by CATALANO, VALENTINO, SALADA, PIERRE CARDIN, 18,000 Pcs Women Summer Slacks, Tops, Skirts, Imported Assorted, Many Styles

INSPECTION JUNE 29th 9 AM to 4 PM, 8 AM DAY OF SALE

TERMS CASH OR CERTIFIED CHECK- 25% DEPOSIT REQUIRED

PETER COSTANZO AUCTIONEERS, INC.

UNION (201) 688-2552

LONG BRANCH (201) 229-2530

AUCTION

ANTIQUES, CHINA, FURNISHINGS
TEA & COFFEE POT COLLECTION
TOOLS, FARM EQUIPMENT

FOR: NEWT & BETTY MOYER

544 Hunsicker Rd.

Morwood, PA

(bet. Rt. 113 & Morwood Rd.)

TUESDAY, JUNE 30, 1987

10:00 A.M.

ANTIQUES - 2 pc Corner Cupboard, child's wicker rocker oak bureau & washstand, carved side chair ladderback rocker side chairs & rockers, treadle sewing machine, milk cans, wooden tool chest frames rag carpeting knotted comforter linens lace barn scale 2 dr milk cupboard waterfall desk & dresser hog troughs, pitcher pump trundle bed dinner bed, kitchen items crocks & jugs old newspaper Montgomery transcript Phila Inq 1945 Farmers Wife 1925 early split bamboo fly & spinning rods collection of oil industry memorabilia, oil cans, country store kerosene disp auto maps, Sun Oil, City Service etc. painted kitchen cupboard old tools, tinware

GLASSWARE & CHINA - Ironstone dinnerware, Chelsea, Gold Lustre pattern 12 pc settings, lg collection of decorated ironstone tea & coffee pots, milk pitchers & creamers, wheat pattern platters, Majolica pitchers, Austrian sugar bowl Occ Japan fig, Rebecca at the Well pitcher Hall pitcher, nutmeg grader, milk glass urn, Kings Rose cup & saucer, carnival glass sugar & creamer Shirley Temple cup, Buffalo Bill paperweight, Nippon mustard dish Goofus glass berry set, cruets, covered buttered dish, Dep glass, syrup disp, Bristol vase, milk bottles

APPLIANCES - Hotpoint washer & dryer, Unico custom 15 cu ft upright freezer

EQUIPMENT & TOOLS - J D Flail Mower, grain drill N1 3 pt seeder row marker, Shopsmith comb work station complete elec buffer & grinder lots of lumber & barnboards, SS wash tub S milkers air compressor Craco Flow Pump bike farm chemicals 20 10 5 Fertilizer Clover Seed sm hand tools (many early)

GUN PARTS & FISHING EQUIPMENT - 410 Reloading Equip Scope Mounts Varia Choke Bolt Action surf boat rods fresh & saltwater rigs Mitchell Penn Diawa Misc tackle & lures

NOTE - Sale will begin w/tools & barn items, Equipment at 11 00 A.M. Furniture at 12 00 Noon followed by Ironstone Collection A very nice grouping of clean collectibles Don't miss it! Bring your chairs

TERMS - CASH TENTS LUNCH

Sanford A. Alderfer, Inc.

REAL ESTATE BROKERS and AUCTIONEERS

665 Harleyville Pike (Rt 113)

Box 1 Harleyville PA 19438

C.B. HOOPER & SON, INC.
Intercourse, PA
(717) 768-8231

HOOPER EQUIPMENT, INC.
Middletown, DE
(302) 378-9555

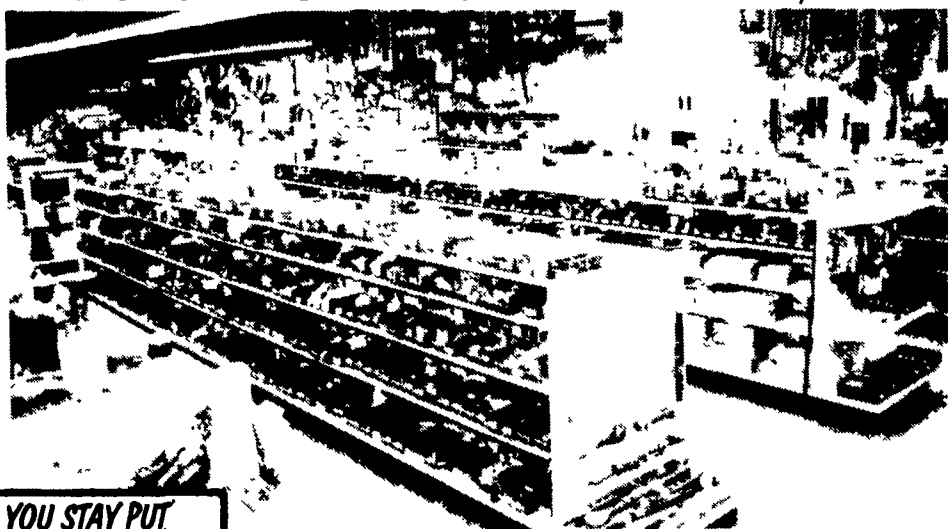


TWO LOCATIONS

The Saving Place

WE SHIP PARTS DAILY

Via UPS - PPSH - BUS - AIR FREIGHT, ETC.



YOU STAY PUT



Pick Up Your Phone And Place Your Parts Order With Us

HOURS

Mon.-Fri.: 7 AM-5 PM; Sat.: 7 AM-Noon

CALL US...

It Could Be We Have It



Authorized UPS Station