

MAILBOX MARKET FOR SALE

AKC registered Bouvier des Flanders born May 10, 1987. Both parents on premise, home raised, excellent temperaments. 215-489-0220. leave message. Montgomery Co Small hydraulic crane with 8 ton jack. Ideal for mounting on pick-up for nursing work \$225. Adams Co., 717-337-1151.

Thoroughbred filly, 2 yr., racing prospect, ex. bloodlines, ready for training, lots of bone. \$2800. Firm. Hunterdon Co., 201-782-6162.

MF 13' grain table, variable spd. reel, hyd. height control, used less than 400 acres. Lebanon Co. 717-866-7565. Ask for Ernie.

Tobacco shed, 32'x90", good condition. Give Offer. 717-866-4280

4 1/2 cu. ft. commercial cement mixer, 5 h.p. engine or electric motor, 25 gal. spray, 7 1/2 h.p. engine on Taylor Berks Co. 215-926-3284

(1) 4 cyl. Continental engine w/clutch red mod 1-Y-69-B; (1) 2 cyl JD engine w/clutch Red mod LUC. 215-779-9089

2 Reg. Holstein heifers, due soon, Dams w/good records, \$1,000. each. Lanc. Co., Manheim 717-665-4239

Pop top pickup camper w/or without Ford pickup, made by Scamper, like new, used only 3 times 717-656-6644

IH 884 w/loader; NH 258 rake; NH 455 trailer mower. Union Co. 717-966-3697

MH 60 SP combine, good condition; NI ground driven manure spreader Schuykill Co. 717-648-4462 or 717-648-1072 Evenings.

Hospital bed, \$50. 717-284-2266

8 Yorkshire service age boars, \$225.; 22" truck threshing machine. John E. Stoltzfus, 335 Millwood Rd., Gap, Pa. 17527.

NH 273 baler, 54A thrower, \$1,200.; NH 460 haybine, \$300.; IH rake, \$150.; JD N manure spreader, \$200. S. Lanc. Co. 717-548-3501

10,000 gal. tank, suitable for grain; 2 tractor tires, 14.9x24 on rims, 85% rubber, Make Offer Lanc Co. 215-445-7101

Warehouse w/2 offices, 2 1/2 acres, Middletown, DE. 301-755-6627

1973 Ford F250 utility bed truck, 3 spd. trans., V8, runs but needs work, \$475. Cecil Co., MD. 301-287-5277

FMC sweet corn harvester single row; 4"-6"x40" irrigation pipe; Hale PTO high pressure irrigation pump. Gloucester Co. 609-435-0683. Nite.

1972 Ford F600 Straight truck, 16' bed with frame sides. Suitable for hay, grain, hogs, etc. \$2450. 717-776-7858. Cumb.

Super 90 MF tractor, steel wheels with pulley. Good cond. Lanc Co., Daniel J Stoltzfus, 3038 Old Phila Pike, Bird-in-Hand, PA.

Savage 420 O/U 12 ga shotgun, v/g condition, \$325. Hyd. taigate 8' 12 volt, very nice, \$1000 o.b.o. 301-398-7680.

400 gal. DeLaval bulk milk tank with 4hp compressor, excellent cond., must sell, \$300 Juniata. 717-258-5463.

AKC Min. Schnauzers, ears cropped, champ. bloodline, non-shedding, excellent family pets, \$250. Farmall M, excellent condition Schuykill. 717-467-3434.

Ford 8N tractor, very good condition, new rubber on front, \$1975. Cumb. Co., 717-532-6367.

6 Angus, 2 Charolais, 1 Angus stock bull, 2 1/2 yrs old. York Co. 1 or all. 717-244-8526

1971 Ford 1/2 ton pickup truck, 8-cyl., 302 motor. Call 9 to 10 p.m. evenings. 215-857-3426. Chester Co.

270 NH baler, continuous flow feeder arm, good JD rotary bar rake. Chester Co. Isaac Stoltzfus, Lincoln University, PA 19352

IH 3PT 3-14" plow in VG condition. Asking \$450 717-933-5232 after 4:30 Berks Co.

Butter Oswalt 1830 Ensilmixer w/scales trailer. \$6500. Allis Chalmers 4R cornplanter, monitor, \$250. Cunningham hay conditioner, \$200. Franklin Co., 717-352-2534.

BRAHMAN CATTLE, QUALITY REGISTERED, VERY GENTLE, GRAY, RED, POWHATAN, VIRGINIA, 804-794-1209.

10KW Kohler 3PH Lt plant., 4 cyl. gas or propane, switch gear, large 1 phase transf. Make Offer. West Chester. 215-696-1703

JD 24T baler, good condition. 215-759-2777

Tractor tires, size 16-9-34, 60% tread. Also Stauffer forage wagon. Lanc. Co. 717-656-8531.

1190 haybine; 707 NH harvester; JD A tractor for parts; Grass head for Fox 1000 series. Lanc. Co. 717-665-5683

Tobacco shed 24x40, corn shed 24x30, tin roofs. Some old boards Best Offer. Lanc Co. 717-733-1602

White face Herefords, cows and young calls. Mifflin Co. 717-899-6002.

NH 467 Haybine 7'; NH 66 bale w/50 bale thrower; IH 45 baler; JD 2 tedder. Priced to sell. Lebanon Co. 717-964-3097.

JD 55 Combine, 2 row H, 12' plat; 2 fuel tank 280 gal; 12 ton Martin Tag-along tilt bed. Adams Co., 717-359-5283.

One quick coupler for sale like new. \$100. Gloucester Co., 609-478-6090.

17 Angus cows with calves. Various ages. Also, 4 year old Angus bull proven potent. Howard Co., 301-531-5893.

Four row potato planter, 3 PTH cultivator, AC, 4 row corn head, spike harrow, midwest braker bar, 18' grading, picking table 609-448-0748 after 8pm

1980 Olds Tornado diesel, very nice, loaded white with burgandy interior, \$2,750. Lanc. 717-687-0743.

Six year buggy saddle mare, lots of snap. Still green broke, \$700. Come evenings. Israel Stoltzfus, R1, Box 396, Kirkwood, PA 17536.

Liquid protein tank, good cond. Make offer. Leb. Co. 717-865-5628.

Concrete wall forms, \$75 each; 6' power taigate, \$750; cordwood saw, \$850; 21' belt conveyer, \$500; 4' broom, \$850. Northumberland, 717-286-5306.

Ear corn, Carroll Co 301-857-4639, no Sunday calls.

Liquid manure with micro-aid pay half trucking within 5 mile, buggy in good shape. Alvin M Lapp, 5459 Buena Vista Rd., Gap, PA 17527

D.S. MACHINE SHOP

238B Old Leacock Rd., Gordonville, PA 17529

- TRAILERS MADE TO YOUR SPECIFICATIONS
- HIGH-TENSILE FENCING and HARDWARE
- PRECISION MACHINE WORK
- CUSTOM FABRICATION
- CUSTOM BUILT WOOD and COAL STOVES
- CUSTOM BUILT HIGH PRESSURE WASHERS
- WELDING SUPPLIES
- KENDALL OILS & LUBRICANTS

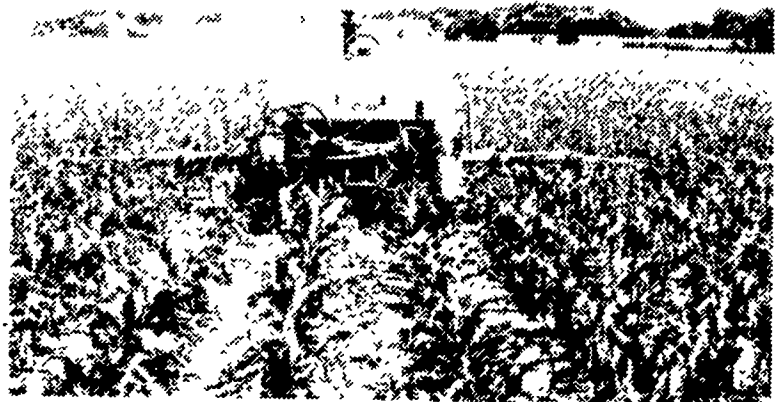


Kendall



UPS Service

SIDEDRESS CORN?



YOU BET!!

CALL THE PROFESSIONALS... 14 Years Experience Sidedressing

- (3) Tool Bar Rental Units
- (2) Amish Horse Drawn Rental Units
- (1) Tractor, Custom Service Unit
- Plenty of Nursing Units

DON'T FORGET

TOPDRESS ALFALFA: After 1st Cutting, Be Sure To Apply Your First Topdress Application.
ASGRO SOYBEANS

MASTER FARMER FERTILIZER

Organic Plant Food Co



2313 Norman Road
Lancaster, PA
(717) 397-5152

Mon-Fri 7 AM to 5 PM
Sat 7 AM to 11:30 AM

50 Years Serving Lancaster Co. Agriculture And Proud Of It!

WHITE WASHING DAIRY BARN

- DRIES WHITE
- DOES NOT RUB OFF EASILY
- NO WET FLOORS
- IS COMPATIBLE WITH DISINFECTANT & FLY SPRAYS
- WASHES OFF WINDOWS & PIPELINES EASILY

BARN CLEANING SERVICE AVAILABLE WITH COMPRESSED AIR

To have your barn cleaned with air it will clean off dust, cob webs & lots of old lime. This will keep your barn looking cleaner & whiter longer

We will take work within 100 mile radius of Lancaster

MAYNARD L. BEITZEL
Witmer, PA 17585 717-392-7227

Barn Spraying Our Business, not a sideline.
Spraying since 1961.

High Pressure Washing And Disinfecting Poultry Houses, Veal Pens, Hog Units And Dairy Barns



Let Us Help You Maintain The Beauty And Health of Your Trees

TREE SPRAYING

Complete Prevention of All Insect Damage

Pesty Flying Insects Can Ruin Outside Groups Such As Church Gatherings, family Picnics and Reunions.

THERMAL FOGGING IS THE ANSWER

Kills Gnats, Mosquitoes, Bees and All Flying Insects



1278 Loop Rd.
Lancaster, Pa.
17604
717-397-3721
Since 1928
Pest control is too important to trust to anyone else

MUSSER & ASSOCIATES, INC.



R.D. 2 • BOX 2881

Rt. 322 & Fetterville Road
(717) 354-7561

EAST EARL, PA 17519

We Sell Complete Pole Barn Packages Designed To Your Needs:

- HORSE BARN
- GARAGES
- STORAGE SHEDS
- POLE BARN

Erected On Your Site

Or

Material Packages Only (Your Preference)

ROOFING AND SIDING

- 29 Ga. Steel In 12 Colors
- Full Line Of Steel Trimming
- Full Line Of Vinyl Siding
- Aluminum Roofing And Ceiling Material
- Shingles And T-111

Buy Spruce & Treated Lumber Direct From The Mill Through Us

SQUARE BARN POLES Pressure Treated

	10'	12'	14'	16'	18'	20'	22'	24'
4"x6"	8.25	11.25	13.12	15.95	19.20	22.50	—	—
6"x6"	—	18.50	20.95	25.15	29.93	34.75	39.90	44.75

2x6 CENTER MATCH TREATED BOARDS

	10'	12'	14'	16'
	4.17	4.99	6.15	8.40



Complete Pole And Other Buildings