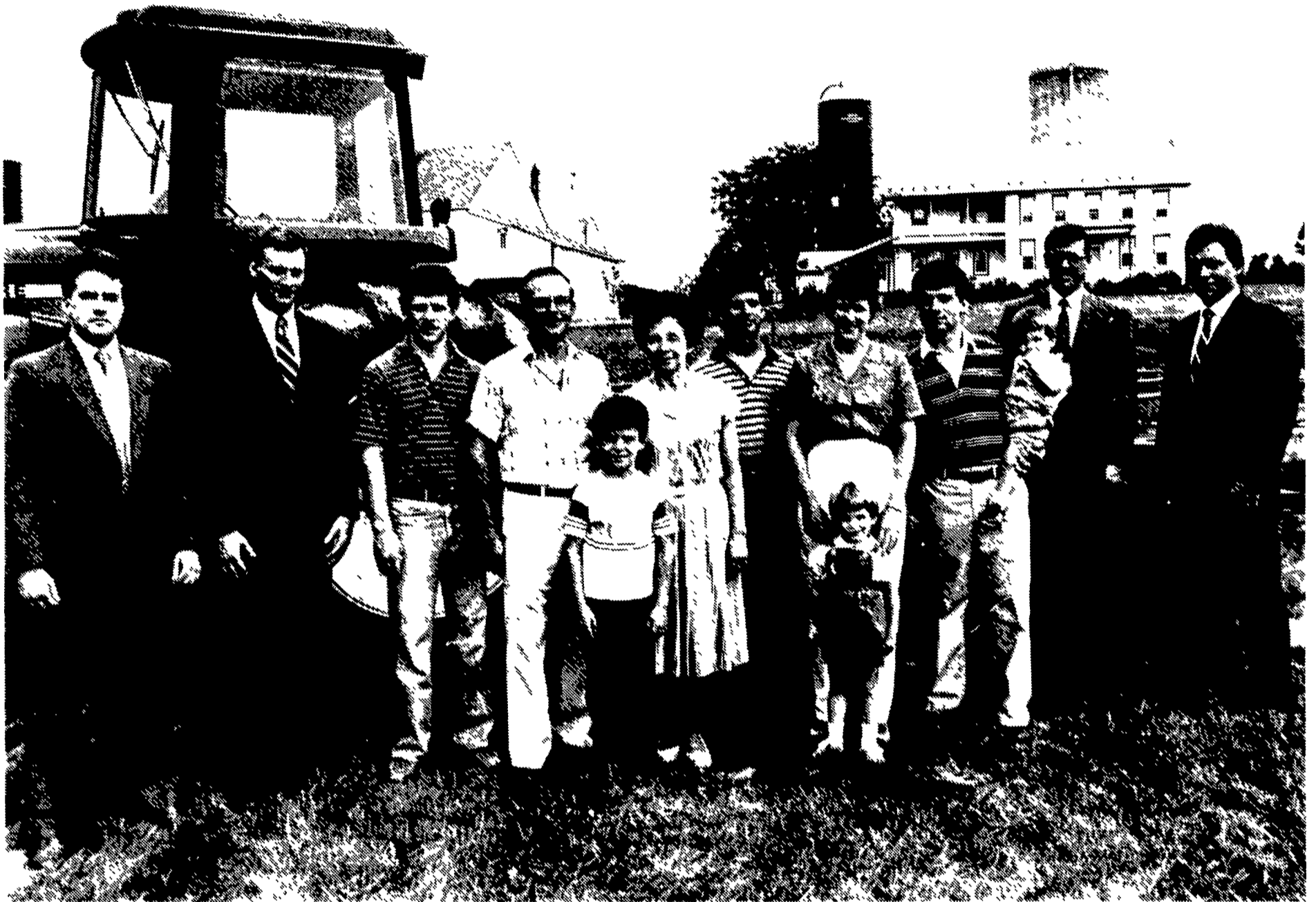


CONGRATULATIONS TO THE ROHRER FAMILY FOR 34 YEARS OF COMMITMENT TO AGRICULTURE.



Hamilton Bank believes The Family Farm is the Backbone of Agriculture. On behalf of all dairymen, we are pleased to salute the success of the Rohrer Family from Washington Boro. The Robert H. Rohrer and Sons Dairy Farm is a 350 cow operation. Pictured (L to R) Jeff Troutman and John Moose from the Agri-Finance Department of Hamilton Bank. The Rohrer Family - Bill, Robert H., Tony, Lorraine, Mike, Robin and Robert L. Rohrer and their children Tiffany and Tyler, Darwin Boyd and Roger Rohrer from the Agri-Finance Department of Hamilton Bank.

A SALUTE TO DAIRYMEN. EVERY MONTH IS DAIRY MONTH WITH US.

In June a lot of people pay tribute to dairy farmers. It's National Dairy Month.

At Hamilton Bank, we feel you deserve credit a lot more often than that. Managing a successful dairy operation requires working capital all year round. So we're here to help you meet your capital requirements whenever you need us.

Dairy is the major agricultural enterprise in Pennsylvania and accounts for 41 percent of agricultural cash receipts. The total annual volume of

dairy production for our seven-county area is \$451 million. This represents 35% of the yearly production for Pennsylvania. Now that's a record you can point to with pride, and we're proud to be able to help—anyway, anytime. At Hamilton Bank, every month is dairy month.

Contact your local office for complete details on Hamilton Bank Agri-Finance Programs.



Hamilton Bank

A CoreStates Bank

Member FDIC

THERE'S ONLY ONE...HAMILTON.