

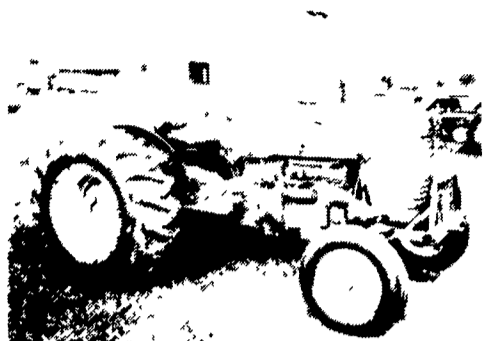
# WENGBERS INC.

251 SOUTH RACE STREET, MYERSTOWN, PA 17067

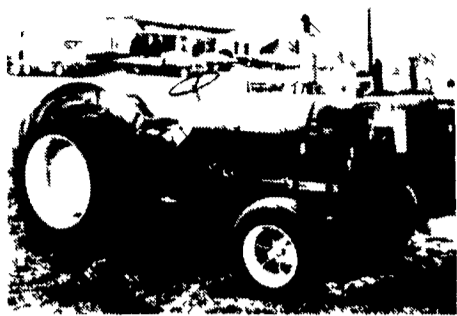
PHONE: 717-866-2135

NIGHTS,  
PHONE:  
717-866-7147  
or  
717-273-9089

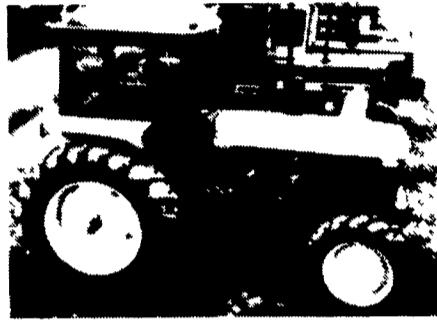
**HOURS:**  
MON-FRI 7:30 To 5:00  
SAT 7:30 To NOON



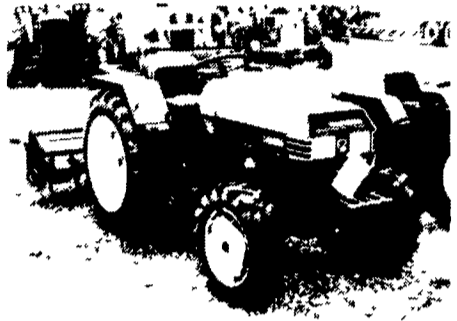
MF 65 Diesel, P.S., 3 Pt. PTO, New Paint. **\$3,900**



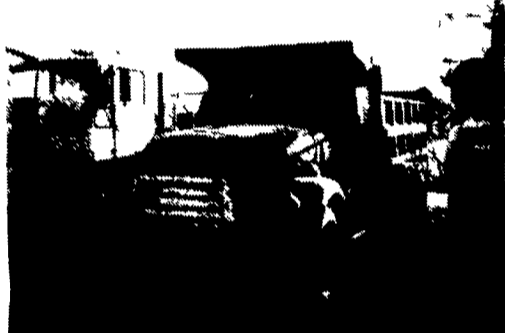
1978 Ford 4600 Diesel, 3 pt., PTO, P. Steering, 8 Speed Transmission, 60% Tires, Operating Cond. **\$4,900**



1975 JD 4230 4WD- 90% Rubber, Fresh Major On Engine, 2500 Hours, Clean Original, Cab, Air, Quad., Good Tractor **\$14,700**



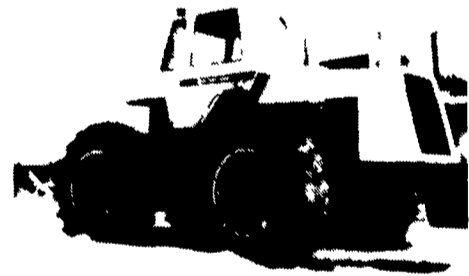
Valpadana 4033- 33 Hp- 4WD- Power Steering- 3 Pt.- Reverser Transmission, Weights, Only 25 Hours. **\$8,800**



1950 GMC 10 Wheel Dump, Nice Body, Needs Motor Overhauled **\$2,750**



1974 White Truck Tractor w/Heavy Loading Crane, Crane Turns 180°, Rebuilt 318 Detroit, 10 Speed Road Ranger, 4 WD, Operating Condition, Truck Has P.T.O. **Only \$5,250**



1975 Case 2670 w/20.8x34 Duals (40%), 2000 Hours, New Paint, 3 Pt., PTO. **Super-Super Buy \$11,500**

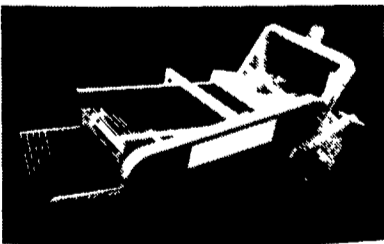


3 Pt. & Pull Type **Pictured Is Standard Model**

**NEW CORNSHELLERS**

- 3 Pt. Economy . . . . . \$795
- 3 Pt. Standard . . . \$1395
- 3 Pt. Deluxe . . . . . \$1695
- Pull Type Add \$100

## POTATO DIGGERS



1 Row, 3 Pt., PTO **\$1,495**

**COMBINE SALE**  
All Combines Have Cabs

- White 8600-D-QT w/Grainhead . . . . . \$8680
- IH 615G-R Screen-QT w/Grainhead . . . . . \$7850
- White 7300 G-QT w/Grainhead . . . . . \$7850
- Gleaner F Diesel w/Grain & 435 Corn . . . \$4900

**CORN & GRAIN HEADS AVAILABLE**

**LOADERS**

- Loader Off D.B 990
- Freeman Off 880 Brown
- AC Off 1600
- Souders Loaders
- IH 2050 Loader
- JD 158 Loader
- Loader Off 800 Ford
- IH 2000
- JD 47 Loader
- Case Off 930
- JD 148 Loader

**ROLLBARS & CABS**

- IH 2 Post w/Roof
- Case 1070 Cab
- AC 7000 Rollbar
- JD 4020 Cab
- DB 1200 Cab
- (30) Combine Cabs
- AC 7030-7050-Cab
- MM G1000 Vista Cab
- Ford 4000 Cab
- Ford 6600 Cab
- JD 4320 Cab
- Case 1270 Cab
- Ford 9600 Cab-Air
- IH 706 Cab

**CORNPLANTERS**

- IH 2X Fast Hitch
- JD 246 2x3 Pt
- Ford 2x3 pt
- MF 2x3 pt -NEW
- JD 7000 4x
- AC 600 4x

**BALERS**

- Extra Throwers
- JD 214 Wire Tie
- NH 851 Round
- NH 67
- JD 24T

**CHISEL PLOWS**

- JD 9' & 10' Pull
- Landoll 10' Pull
- 5 Tooth V Chisel (3 pt)
- 1 tooth 3 pt subsoiler
- 7'-8'-9'-10'-11'-12'-14' 3 pt
- 3 Tooth V Chisel (3 pt)

**DISCS**

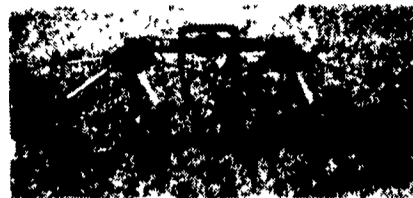
- IH- 11'-13' Transports
- KK 6' 3 pt
- IH 480 w/Wings-24
- IH Cub Disc
- JD 10' RWA Transport
- Bush Hog 16' w/Wings
- JD 310 Transport
- Wilbeck Offset 11'
- JD 1520 Plowing Disc

**NEW IDEA UNI SYSTEM ATTACHMENTS**

- 731 4x40 Cornhead
- 743N Cornhead
- 766 Pickup Head
- Extra Grain Heads
- 728 4x30 Corn Head
- 3x30 Harvester Head
- 705 Diesel Tractor
- QT Throat Assy
- 710 Combine
- 725 3RN Cornhead
- 763 WN Harvester Head

## NEW EQUIPMENT SPECIALS

**STIREX P.T.O. TEDDERS**  
2-Wheel Pull or 3 Pt  
**'895**



4 Wheel- **'1695**

### ROTARY MOWERS

- 40" 3 pt Heavy Duty . . . . . '495
- 4' 3 pt Standard Duty . . . . . '449
- 4' 3 pt Heavy Duty . . . . . '495
- 5' 3 pt Standard Duty . . . . . '449
- 5' 3 pt Heavy Duty . . . . . '495
- 6' 3 pt Heavy Duty . . . . . '795
- 7' 3 pt Heavy Duty . . . . . '1395
- 4' pull Heavy Duty . . . . . '595
- 5' pull Heavy Duty . . . . . '695
- 6' pull Heavy Duty . . . . . '895
- 7' pull Heavy Duty . . . . . '1495
- 4' 3 pt Estate . . . . . '995
- 5' 3 pt Estate . . . . . '995
- 6' 3 pt Estate . . . . . '1195

### SICKLE BAR MOWERS

- 6' 3 pt pitmanless . . . . . '1495

### SCRAPER BLADES

- 6' 3 pt Heavy Duty . . . . . '195
- 7' 3 pt Heavy Duty . . . . . '225

### CEMENT MIXERS

- 9 Cu. Ft.-3 Pt . . . . . '595
- 12 Cu. Ft.-3 Pt . . . . . '695

### STONE RAKES

- 6' 3 pt . . . . . '495
- 7' 3 pt . . . . . '550
- 8' 3 pt . . . . . '595

### HAY TEDDERS

- 2 Wheel Pull PTO . . . . . '895
- 2 Wheel 3 pt PTO . . . . . '895
- 4 Wheel Pull PTO . . . . . '1695
- 4 Wheel 3 pt Ground . . . . . '495

### HAY RAKES

- 4 wheel 3 pt . . . . . '495

### WOODSAWS

- 3 pt PTO 30" . . . . . '495

### ROTOVATORS

- 34" 3 pt . . . . . '875
- 42" 3 pt . . . . . '875
- 58" 3 pt . . . . . '1275
- 74" 3 pt . . . . . '1475
- 82" 3 pt . . . . . '1975

### LOADERS

- 3 pt snow & dirt bucket. '695

### SEEDERS

- PA 250 3 pt . . . . . '285
- PA 300 3 pt . . . . . '295
- PA 400 3 pt . . . . . '395
- PA 500 3 pt . . . . . '450

### LANDSCAPE BOXES

- 3 pt 5'6" . . . . . '495
- 3 pt 6' . . . . . '495
- 3 pt 7' . . . . . '595

### TRAILERS

- 1986 1 ton-9' Bed . . . . . '695
- 1986 4 ton 14' . . . . . '1495
- 1986 4 ton 16' . . . . . '1595

### POST HOLE DIGGER

- 3 pt 6", 9", 12", HD . . . . . '495

### CHISEL PLOWS

- 3 pt 9 tooth spring loaded . . . . . '595

### DIRT SCOOPS

- 3 pt Reversible . . . . . '395

### POTATO PLOWS

- 1 row 3 pt . . . . . '95

### DISC HARROW

- 5'6" 3 pt 18" Combo . . . . . '495
- 6'6" 3 pt 18" Combo . . . . . '495

### SUBSOILERS

- 3 pt 1 shank HD . . . . . '369

### BALE MOVERS

- 3 pt 3 tine HD . . . . . '379

### FORKLIFTS

- 3 pt tilt cyl HD . . . . . '2495

### WAGONS

- 6 ton . . . . . '450
- 8 ton loaded . . . . . '550
- 10 ton loaded . . . . . '625

### CULTIVATORS

- 1 row 3 pt . . . . . '149

### BOOM POLES

- H D 3 pt . . . . . '149
- Standard 3 Pt . . . . . ' 79

### 100 COMBINE CORNHEADS

### HARVESTER HEADS (75 In Stock)

### MISC. EQUIP.

- Spike Harrow
- IH Cub & 140 Attachments
- Hesston 10W Mower
- 12' Lime Drills
- IH Side Dressers
- 8' to 12' Spring Tooth Harrows
- Hesston 30 Mover
- (3) Bale Wagons
- (2) Hesston 10 Stackers
- NH 355 Feed Mill
- NH 357 Feed Mill
- Richardton 1200 Side Dump
- Fox 660 Blower
- IH 56 Blower
- Gehl 95 Grinder Mixer
- (3) Cornpickers
- (7) Harvesters
- Transplanters
- Hay Rakes
- Cornshellers
- Grain Auger-6" x32'
- 8'-10'-12' Cultipacker
- (2) Lely Roterra
- JD Hi Boy Sprayer
- Hahn Hi Boy Sprayer
- NH Flail Chopper
- Brady Flail Chopper

- AC 3xSC
- JD (3 pts) - 2x-3x
- JD (Semi) - 3x-4x-5x
- JD (pull) - 2x-4x Reset
- JD 1x Reset 2500 Attach
- Oliver (semi, Reset) 4x-5x
- IH 1x (MTD)
- IH 550 5x (Semi)
- IH 710 5x (Semi)
- Ford 2x (3 pts)
- MF 880 5x (Semi)
- MF 2x Rollover

### PLOWS

- Oliver 4x3 pt
- JD 5x Rollover
- Oliver 3x Rollover
- JD 3X Rollover
- IH 3X Rollover
- IH 4X Rollover
- JD 7x Reset On Land
- JD 4x Pull
- OL 2x Rollover
- IH 3x FH
- IH 3x FH Disc Plow
- Ford 3x3 pt
- IH 2X FH

### ROTARY MOWERS

- Ford 7' Pull
- Woods 6' Offset, 3 pt
- Bush Hog 4X Stalk Chopper
- Woods C80-3 pt
- Woods 5' 3 pt
- Servis 15' Pull Type
- KK 6' 3 pt

### CULTIMULCHERS

- JD 930 12' 3 pt
- Bearcat 12'

### CULTIVATORS

- AC D14-D15 2x
- Ford 2x3 pt
- JD 2x (H & 420)
- IH Cub & Super A. A. C
- IH C-H-M 2x Frt
- JD 6x 3 Pt
- IH 4x3 Pt

### SICKLE MOWERS

- Ford 3 pt
- Sitrex 3 pt dynabalance
- AC B
- NH 450 3 pt
- Ferg 3 pt