

Virginia Weekly Livestock

Thursday, June 11, 1987

WEEKLY REVIEW IN VIRGINIA MARKETS IN REVIEW, JUNE 4 10 1987 FEEDER STEERS AND HEIFERS IN VIRGINIA AUCTION AND THE MIDWEST WERE IN FLUCENCE BY A STRONGER SLAUGHTER CATTLE MARKET AS BOTH MOVED STEADY TO \$2.00 HIGHER CARCASS BEEF ALSO RANGED STEADY TO \$2.00 HIGHER WITH THE BOXED BEEF CUT OUT VALUE REACHING \$113.22/CWT TUESDAY THIS WAS \$1.70 LOWER THAN LAST WEEK COWS AND BULLS IN VIRGINIA AUCTIONS AND THE MIDWEST RANGED STEADY TO \$2.00 LOWER EARLY BEFORE THE COW BEEF MARKET REBOUNDED \$2.00-4.00 HIGHER ON LIMITED TRADING BEEF PRODUCTION LAST WEEK WAS 12 PERCENT ABOVE THE PREVIOUS WEEK BUT 5 PERCENT BELOW A YEAR AGO AND AVERAGE LIVE WEIGHTS WERE 7 LBS LIGHTER THAN LAST YEAR VEAL AND CALF PRICES AT VIRGINIA AUCTIONS FOLLOWED EAST COAST CARCASS PRICES STEADY TO \$3.00 LOWER AS SLAUGHTER WAS UP 15% FROM THE PREVIOUS WEEK BUT 20 PERCENT BELOW A YEAR AGO WITH AVERAGE WEIGHTS HOLDING ABOUT STEADY LAMB PRICES IN VIRGINIA AUCTIONS WERE \$5.00-12.00 LOWER WHILE MIDWEST PRICES WERE \$1.00-4.00 LOWER EAST COAST CARCASS PRICES WERE STEADY TO \$4.00

LOWER LAST WEEK SLAUGHTER WAS 12 PERCENT ABOVE THE PREVIOUS WEEK BUT 8 PERCENT BELOW A YEAR AGO AND AVERAGE WEIGHTS WERE 3 LBS HEAVIER HOG PRICES IN VIRGINIA AUCTIONS AND THE MIDWEST TURNED STEADY TO \$3.00 HIGHER AS PORK PRODUCT PRICES MOVED AS MUCH AS \$5.00 HIGHER ON ALL CUTS PORK PRODUCTION LAST WEEK WAS UP 13 PERCENT FROM THE PREVIOUS WEEK BUT 6 PERCENT BELOW A YEAR AGO WHEN AVERAGE WEIGHTS WERE ONLY 1 LB LIGHTER RICHMOND HOG MARKET CLOSED \$2.00-2.50 HIGHER THAN LAST WEDNESDAY WITH BARROWS AND GILTS 1-4 200-240 LBS AT \$58.50-59.50/CWT TOTAL RECEIPTS FOR THE WEEK 285 HEAD SOUTHEAST VIRGINIA HOG MARKET CLOSED \$1.75-2.25 HIGHER THAN LAST WEDNESDAY WITH BARROWS AND GILTS 1-4, 200-240 LBS AT \$59.50-60.50/CWT TOTAL RECEIPTS 9703 HEAD AT HARRISONBURG, LYNCHBURG, AND TAPPANNOCK HOG PRICES WERE \$2.00-3.00 HIGHER THAN LAST WEDNESDAY AT \$57.00-61.00 SALES OF SOWS AND BOARS ARE TOO FEW TO REPORT PRICE RANGES FOR VIRGINIA AUCTIONS SLAUGHTER CATTLE CHOICE STEERS 2-3 1000-1400 LBS 65.00-70.00 CHOICE HEIFERS 2-3 900-1150 LBS 61.00-70.00 UTILITY & COMMERCIAL COWS 43.00-51.25 FEW 37.00 BULLS 1-2 900-1300 LBS 45.00-55.50, 1-2 1300-1600 LBS 49.25-58.75 1-2 1600 LBS & OVER 52.25-59.50 SLAUGHTER CALVES AND VEALERS VEALERS HIGH CHOICE AND PRIME 100-250 LBS 79.00-92.00 GOOD AND CHOICE 100-250 LBS 66.00-79.00 CALVES

GOOD AND CHOICE 250-500 LBS 62.00-74.00 SLAUGHTER LAMBS HIGH CHOICE AND PRIME 95-125 LBS SPRING 75.00-83.50 SLAUGHTER HOGS US 2-4 200-250 LBS 54.00-60.10 SOWS US 1-3 300-500 LBS 38.00-48.10, 500 LBS & OVER 40.25-46.00 FEEDER CATTLE STEERS, MEDIUM 1 300-500 LBS 79.25-91.00 500-700 LBS 70.00-84.00 HEIFERS, MEDIUM 1 300-500 LBS 63.00-75.00 500-700 LBS 52.00-72.00

Shenandoah Valley Livestock

Harrisonburg, Va.

Saturday, June 6, 1987

Report supplied by auction

FEEDER CATTLE TREND:

Mostly Steady. STEERS: M&L-1 L-300 lbs. 88.00-91.50; 300-500 lbs. 78.00-87.00; 500-600 lbs. 78.00-83.50; 700-1000 lbs. 1 lot 71.75; Holstein 300-1000 lbs. 58.00-76.00; S-L&M&L-2 500-600 lbs. 75.00-77.00.

FEEDER BULLS: M&L-1 300-500 lbs. 75.50-84.50; 500-700 lbs. 66.00-69.50; 700-800 lbs. 1 lot 62.00.

HEIFERS: M&L-1 300-500 lbs. 69.00-75.00; 500-700 lbs. 67.00-71.00;

700-800 lbs. Few 63.00-65.00; S-L&M&L-2 300-500 lbs. 67.00-70.00; 500-700 lbs. 67.00.

STOCK COWS: Beef w/calves M&L-1 575.00-685.00; Baby Calves Large 91-105; Small & Medium 50-90.

SLAUGHTER COWS TREND: 2.00 Lower. Utility & Commercial 2-4 40.00-45.75; Canner & Cutters 1-3 36.50-41.00.

SLAUGHTER BULLS: 1&2 52.75-55.75.

LAMBS: Trend 12 cents Lower. Blue O High Choice & Prime 76.50; Red O Choice 74.50; Feeder Lambs Choice 77.00-89.00; Slaughter Ewes 25.00-31.00.

HOGS: US 1-3 200-240 lbs. 57.85; Sows 1-3 43.75-45.75; Boars 35.00.

SLAUGHTER CALVES: Good & Choice 65.00-72.25.

Hogs: 70 hd. 2.00 higher US 1&3 220-240 lb. 59.50-60.50; 2&3 58.50; 240-260 lb. 58.00-59.00; 190-220 lb. 55.00-58.00; 270-310 lb. 54.00-55.50 #2&3 45.00-50.00. Sows: 9 hd. 300-500 lb. 42.00-45.00. Boars 7 hd 400-700 lb. 39.75-40.75; 300-400 lb. 39.00-40.00.

STOCK CATTLE: 35 hd. Steers: 300-500 lb. 60.00-71.00; 500-700 lb. Hols x 58.00-61.00; 850-975 lb. 57.00-67.50. Heifers: 300-500 lb. 58.00-63.50; 700-900 lb. 42.00-52.00. Bulls: 300-400 lb. 69.00; 500-650 lb. 55.00-71.00. Lambs: 28 hd. 5.00 lower. Choice 80-102 lb. 74.00-75.00; Good 60-80 lb. 70.00-77.00; Feeders 25-50 lb. 65.00-80.00. Sheep 10 hd. 20.00-25.00, few 30.00-37.00. Goats 38 hd: Large 50.00-61.00, Medium 40.00-50.00; Thin 30.00-40.00; Good Kids 30.00-43.00. Pigs and Shoats: 100 hd. by the head mainly light pigs offered 15-25 lb. 18.00-36.00; 30-50 lb., few fancy 32.00-40.00. By the lb. 140-180 lb. 53.00-57.50. Lt. Boars 10 hd. 190-260 lb. 40.00-45.50.

Westminster Livestock Auction

Hagerstown, Md.

Tuesday, June 9, 1987

Report supplied by auction

SLAUGHTER: Steady prices. High Yield 47.00-50.00; Utility 42.00-46.50; Cannors 40.00-43.00; Shelly 40.00 down. Bulls: Few Offered Good to 53.75. Fed Steers: Low Ch. 1050-1250 lb. 65.00-66.75; Good 58.00-64.00. Fed Heifers: Good & Low Choice 850-960 lb. 52.00-57.00; Choice 765-775 lb. 49.25. Veal Calves: Choice 200-250 lb. one to 114 83.00-95.00; Good 70.00-83.00; Stocky/Thin 45.00-60.00. Killers 80-100 lb 85.00-92.00; 60-80 lbs. 75.00-87.00 Farm Calves- Holstein Bulls 95-125 lb. 100.00-126.00; 85-95 lb. 90.00-115.00. Holstein Heifers: Few 90-105 lb. 91.00-93.00. Butcher

North Jersey Livestock

Hackettstown, NJ

Tuesday, June 9, 1987

Report supplied by auction

Calves- .20-1.30. Cows 39.75-52.25. Easy Cows 25.00-44.75. Heifers 36.50-56.00. Bulls 50.75-62.50. Steers 39.50-61.50. Hogs 40.00-54.00. Roasting Pigs, each 15.00-46.00. Boars 37.00. Sows 39.00-41.00. Sheep .10-.63. Lambs, each 8.00-71.00. Lambs, per lb 32-1.03

ATTENTION FARMERS

The New Way To Market Your Livestock

HATFIELD PACKING CO. AND MOYER PACKING CO. Will Receive Hogs Will Receive Cattle

At The

BLAIR-BEDFORD BUYING STATION

RD 1 Martinsburg, Pa

MONDAYS - Hogs 8 AM to 11 30 AM

Cattle & Calves 8 AM to 3 PM

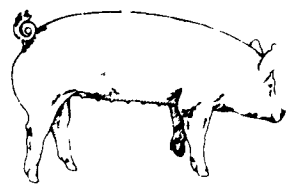
THURSDAYS - Cattle & Calves 8 AM to 3 PM

- No commission or yardage fees deducted from check
- Livestock weighed and paid for immediately
- You may call our office sale day for prices

DALE R. HOOVER - Owner

Business 814-793-3077

Residence 814-793-2657



EMERY'S BUYING STATION

OPEN TO RECEIVE YOUR MARKET HOGS

AT THE GREEN DRAGON MARKET RD 4, EPHRATA, PA 17522 1 MILE NORTH OF EPHRATA ON NORTH STATE STREET.

HOURS. MONDAY, TUESDAY, and WEDNESDAY 7:00 A.M. to 11:30 A.M.

215-458-5677 Residence
717-733-9648 Office

215-458-5677 Residence
717-733-9648 Office

YOU ARE PAID FOR YOUR HOGS IMMEDIATELY

Ken & Lois Emery, Proprietors

SOLIDS EXPERIENCE

When you call US Agri-Systems, you're calling people with solids experience. They've turned solids into liquids when others have failed. At US Agri-Systems you'll find experience and equipment to handle the toughest jobs.

When your solids need to become liquid you need the manure management professionals at US AGRI-SYSTEMS. Call them toll free at 1-800-222-2948.

SWINE PRODUCTION SALES AND SERVICE

Feeding Programs And Services To Meet Your Individual Needs



Supplying Farm Fresh Feeder Pigs

Marketing and Hedging Services

Computerized Record Keeping System

Marketing of Genesis Breeding Stock

Grain Purchasing And Exchange

Developing Individual Financial Programs

Quality Products And Services - Working For YOU

419 West High Street
Elizabethtown, PA 17022

Shippensburg
(717) 532-7845

Elizabethtown
(717) 367-1525

PA Toll Free
1-800-468-5524

NOTICE

HAY GROWERS MEETING

Monday, June 15, 1987

Held At Our Location

8:30 A.M.

Coffee And Donuts

Topic:

Air And Water Relationships In Hay Crops In An Alfalfa Plot, Showing The Root And Sod Profile.

Speaker:

Dick Psolla from Brookside Laboratories, Hartsville, Ohio

This Meeting Is Educational - Plan To Attend

ABC GROFF, INC.

Since 1890
110 S. Railroad Ave
New Holland PA 17557

Mon.-Fri.: 7 AM - 5 PM
Sat.: 7 AM - 12 Noon

Parts 717-354-4191
Sales 717-354-4731
Service 717-354-8004