



Livestock market and auction news

Virginia Weekly Livestock Richmond, Va. June 4, 1987

WEEKLY REVIEW IN VIRGINIA MARKETS IN REVIEW, MAY 28-JUNE 3, 1987 FEEDER CATTLE PRICES IN VIRGINIA WERE STEADY TO \$2.00 LOWER FOLLOWING SLAUGHTER CATTLE THAT MOVED STEADY TO \$1.50 LOWER UNDER THE INFLUENCE OF A WEAKENING CARCASS BEEF MARKET COWS AND BULLS IN VIRGINIA AND THE MIDWEST WERE STEADY TO \$2.00 LOWER ALONG WITH COW BEEF PRICES THE BOXED BEEF CUT-OUT VALUE OF CHOICE 2-3 550-700 LBS CARCASSES REACHED \$114.92/CWT TUESDAY THIS WAS \$1.53 LOWER THAN LAST WEEK BEEF PRODUCTION LAST WEEK WAS 11 PERCENT BELOW THE PREVIOUS WEEK AND 5 PERCENT BELOW A YEAR AGO WHEN AVERAGE WEIGHTS WERE 7 LBS HEAVIER VEAL AND CALF PRICES IN VIRGINIA AUCTIONS FOLLOWED EAST COAST CARCASS MARKETS STEADY TO \$1.00 HIGHER LAST WEEK'S SLAUGHTER WAS DOWN 11 PERCENT FROM THE PREVIOUS WEEK AND 25 PERCENT BELOW A YEAR AGO LIVE WEIGHTS WERE ALSO DOWN 5 LBS ON THE AVERAGE LAMB PRICES AT VIRGINIA AUCTIONS WERE STEADY TO \$4.00 LOWER WHILE MIDWEST PRICES RANGED STEADY TO \$1.00 LOWER

EAST COAST CARCASS PRICES HELD MOSTLY STEADY AS SLAUGHTER WAS 9 PERCENT BELOW THE PREVIOUS WEEK, BUT ONLY 3 PERCENT BELOW A YEAR AGO AS AVERAGE WEIGHTS WERE SLIGHTLY HEAVIER THIS PAST WEEK HOG PRICES AT VIRGINIA AUCTIONS AND THE MIDWEST SHOWED SOME WEAKNESS BEFORE CLOSING STEADY TO \$1.50 HIGHER PORK PRODUCT PRICES UNEVENLY STEADY TO \$4.00 HIGHER ON HAMS AND BELLIES WHILE PORK LOINS WERE STEADY TO NEARLY \$1.00 LOWER PORK PRODUCTION LAST WEEK WAS 14 PERCENT BELOW THE PREVIOUS WEEK AND 6 PERCENT BELOW A YEAR AGO ALTHOUGH AVERAGE WEIGHTS WERE NARLY UNCHANGED RICHMOND HOG MARKET CLOSED 50 CENT HIGHER THAN LAST WEDNESDAY WITH BARROWS AND GILTS 1.4, 200-240 LBS AT \$56.50-57.00/CWT TOTAL RECEIPTS FOR THE WEEK 171 HEAD SOUTHEAST VIRGINIA HOG MARKET CLOSED 25 CENT TO 1.75 HIGHER THAN LAST WEDNESDAY WITH BARROWS AND GILTS 1.4, 200-240 LBS AT \$57.75-58.25/CWT TOTAL RECEIPTS FOR THE WEEK 8480 HEAD AT HARRISONBURG, LYNCHBURG AND TAPPANNOCK HOG PRICES WERE STEADY TO \$1.00 HIGHER THAN LAST WEDNESDAY AT \$55.00-58.00/CWT SOWS RANGED \$38.00-40.00/CWT AND BOARS BROUGHT \$32.00-34.00/CWT PRICE RANGES FOR VIRGINIA AUCTIONS SLAUGHTER CATTLE CHOICE STEERS 2-3 1000-1300 LBS 66.00-71.75 CHOICE

STEERS 2-3 1300 LBS & OVER 68.00-69.25 CHOICE HEIFERS 2-3 950-1100 LBS 63.50-65.75 CHOICE HEIFERS 2-3 1100 LBS & OVER 63.50-69.50 UTILITY & COMMERCIAL COWS 38.00-49.50 BULLS 1-2 900-1300 LBS 46.25-59.00, 1-2 1300-1600 LBS 52.00-63.00FW 48.75, 1-2 1600 LBS & OVER 50.00-64.50 SLAUGHTER CALVES AND VEALERS VEALERS - HIGH CHOICE AND PRIME 100-250 LBS 77.00-93.00 GOOD AND CHOICE 100-250 LBS 78.00-90.00 FEW 60.00 CALVES GOOD AND CHOICE 250-500 LBS 64.00-78.00 SLAUGHTER LAMBS HIGH CHOICE AND PRIME 95-125 LBS SPRING 86.25-93.60 SLAUGHTER HOGS - US 2-4 200-250 LBS 53.00-58.00 SOWS US 1-3 300-500 LBS 40.00-45.00, 500 LBS & OVER 43.00-45.25 FEEDER CATTLE STEERS, MEDIUM 1 300-500 LBS 82.00-94.00 FEW 75.00 500-700 LBS 71.00-85.00 HEIFERS, MEDIUM 1 300-500 LBS 65.00-74.00 500-700 LBS 62.00-72.00 1010E WH BBL

84.50; 700-1000 lbs. 64.00-70.50; Holstein 300-1000 lbs. 46.00-77.00; S-L&M&L-2 300-500 lbs. 73.50-79.00; 500-700 lbs. 65.50-76.00. FEEDER BULLS: M&L-1 300-500 lbs. 72.00-89.00; S-L&M&L-2 300-500 lbs. 56.25-73.00; 500-700 lbs. 61.50-66.50.

HEIFERS: M&L-1 300-500 lbs. 69.00-73.25; 500-700 lbs. 62.00-70.00; 700-1000 lbs. 61.00-64.00; S-L&M&L-2 300-500 lbs. 64.00-68.00; 500-700 lbs. 64.00-68.00; 700-1000 lbs. 53.00.

STOCK COWS: Beef w/calves M&L-1 450.00-700.00; Baby Calves Large 80-126; Small 40-70.

SLAUGHTER COWS: Trend Steady. Utility & Commercial 2-4 42.00-48.00; Canner & Cutters 1-3 36.50-40.50.

SLAUGHTER BULLS: 1&2 48.75-58.00.

LAMBS: Trend 4.25, Lower. Blue O High Choice & Prime 90.00; Red O Choice 86.00; Feeder Lambs Choice 79.00-84.50; Slaughter Ewes 20.00-27.00.

HOGS: Sows 1-3 43.00; Boars 35.75.

VEALS: Choice & Prime 78.00-90.00; Good 78.00-84.00.

SLAUGHTER CALVES: Good & Choice 70.00-73.50.

Grantsville Livestock

Grantsville, Maryland Saturday, May 30, 1987

Large: 28-33; Medium: 25-28.

HOGS: Top Barrows & Gilts 57.00-59.10; Heavy Butcher 54.00-58.50; Light Butcher 45.00-53.00; Butcher Sows 38.00-47.50; Feeder Shoats 30.00-60.00.

VEAL: Good 75.00-100.00; Standard 60.00-74.00; Utility 50.00-60.00; Bull 80.00-125.00.

SHEEP & LAMBS: Good 85.00-95.00; Utility 65.00-75.00; Slaughter Ewes 18.00-25.00.

SLAUGHTER CATTLE: Steers: Good 64.00-71.25; Standard 60.00-62.00; Utility 50.00-60.00.

HEIFERS: Good 60.00-68.75; Standard 55.00-58.00; Utility 45.00-52.00.

COWS: Commercial 44.00-49.50; Utility 42.00-43.00; Canner & Cutter 38.00-40.00.

BULLS: Commercial & Good 56.00-60.25; Cutter & Utility 50.00-54.00.

STOCK-FEEDER CATTLE: Yearling Steers: Good 68.00-78.00; Medium 52.00-60.00.

STEER CALVES: Good 72.00-84.00; Medium 60.00-70.00.

HEIFER CALVES: Good 62.00-76.00; Medium 48.00-55.00.

Shenandoah Valley Livestock

Harrisonburg, Va.

Saturday, May 30, 1987

Report supplied by auction

FEEDER CATTLE: All classes Steady. STEERS: M&L-1 300-500 lbs. 81.00-90.00; 500-700 lbs. 69.00-

Green Dragon Livestock Sales



Location: Ephrata RD 4. 1 mile N. on North State St., Ephrata.

COWS COWS COWS SALE EVERY FRIDAY

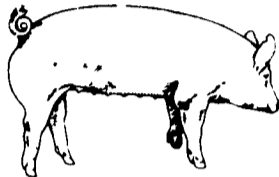
Lots of good Northern Feeder & Stockers Slaughter Cows - Bull Steer, Veal-lamb

11:00 A.M.-Beef Sale 200-300 each week. 1:00 P.M.-Dairy Sale. 7:00 P.M.-Small Animal Sale.

For Special Sales and Herd Dispersals on farm or at our barn or other market information call: Office 717-733-2444, Home 717-838-4318.

WALTER H. RISSER, Proprietor

All out of state and new buyers must have cash or certified check or current letter of credit from bank.



EMERY'S BUYING STATION

OPEN TO RECEIVE YOUR MARKET HOGS

AT THE GREEN DRAGON MARKET RD 4, EPHRATA, PA 17522 1 MILE NORTH OF EPHRATA ON NORTH STATE STREET.

HOURS: MONDAY, TUESDAY, and WEDNESDAY 7:00 A.M. to 11:30 A.M. 215-458-5677 Residence 717-733-9648 Office

215-458-5677 Residence 717-733-9648 Office

YOU ARE PAID FOR YOUR HOGS IMMEDIATELY

Ken & Lois Emery, Proprietors

ARE YOU FLUSHING DOLLARS?

Are you flushing your hard earned money on a manure management system that will prove to be inadequate to your needs? Wouldn't you like to be sure you're spending money on an effective program, rather than just a program.

When you need answers to your needs without pure sales talk - contact US Agri-Systems. The prime objective at US Agri-Systems is to provide you with straight talk about your needs and your budget. State of the art equipment backed by 15 years experience will give you the confidence of doing the right thing.

Contact US AGRI-SYSTEMS And Plug The Leak Of Spending Too Much Money On An Inadequate Manure Management System 1-800-222-2948

SWINE PRODUCTION SALES AND SERVICE

Feeding Programs And Services To Meet Your Individual Needs

Computerized Record Keeping System



Supplying Farm Fresh Feeder Pigs

Marketing and Hedging Services

Marketing of Genesis Breeding Stock

Grain Purchasing And Exchange

Developing Individual Financial Programs

Quality Products And Services - Working For YOU

419 West High Street Elizabethtown, PA 17022

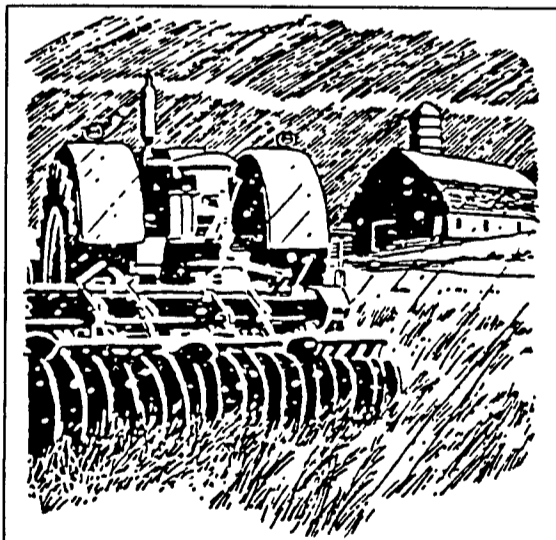
Elizabethtown (717) 367-1525

PA Toll Free 1-800-468-5524

Shippensburg (717) 532-7845

FARMERS

Are you growing TOBACCO, TOMATOES, MELONS, VEGETABLES AND OTHER CROPS?

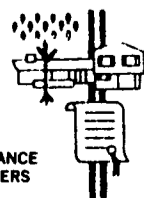


HAIL STORMS ARE COMING RUN FOR COVER!

Protect Yourself With Hail Insurance

Hail damage to Crops can be devastating! Our coverage can start immediately and will pay for damage AT TIME OF LOSS. Our farm policies are designed to fit YOUR needs.

For courteous service from people familiar with hail protection call Roger Slusher at:



JACOB H. RUHL, INC.

26-28 Market Square Manheim, PA 17545

Phone: 717-665-2283

Home: 717-653-1147

Full Service Farm Insurers

INSURANCE BROKERS