

THE OLD FARMER'S ALMANAC

JUNE 15-21, 1987

Sprouts peek as skies weep.

Last quarter of the moon June 18 (Thurs) Father's Day June 21 Magna Carta signed June 15 1215 by King John at Runnymede Battle of Bunker Hill June 17 1775 Susan B. Anthony fined for voting June 18 1872 in Rochester N.Y. Summer begins June 21 at 6 11 p.m. EDT Average length of days for the week 15 hours 17 minutes *Keep a thing for seven years and you'll find a use for it*



Ask the Old Farmer: What is the meaning of the expression 'start from scratch' and how did it originate? C.F. Nashville Tenn. It is said to have originated when a starter made a scratch in the ground to indicate the starting line in a footrace.

Home Hints To rid rust from the corners of rusted cake and pie pans, dip a raw potato into scouring powder and scrub.

OLD FARMER'S WEATHER FORECAST

New England: Rainy and warm at beginning of week, midweek clear and cool, end of week rainy and hot.

Greater New York-New Jersey: Week begins with thundershowers, midweek clear, end of week showery and cool.

Middle Atlantic Coastal: Beginning of week rainy and mild, midweek sunny and hot, showers at end of week.

(All Rights Reserved, Yankee Publishing, Incorporated, Dublin, NH 03444)

Greencastle Livestock

Greencastle, Pa.
Monday, June 1, 1987

CATTLE 548. SLAUGHTER STEERS: Choice & Prime 68.00-73.00, few to 74.85; Good & Choice 64.00-69.75; Good & Choice - Holstein 56.00-62.75; Standard & Good - Holstein 51.00-56.25.

SLAUGHTER HEIFERS: Choice 66.00-70.00, few to 71.75; Good & Choice 62.00-67.00; Standard & Good 55.00-62.50.

COWS: Utility & Commercial 45.00-49.00, few to 52.00; Cutter &

Boning Utility 42.50-48.50, few to 51.00; Canner & Low Cutter 43.50 & down.

BULLS - ALL WEIGHTS: Yield Grade 1 57.00-61.00, few to 65.00; Yield Grade 2 52.50-57.75.

STOCKER CATTLE - ALL WEIGHTS. Steers - Medium & Good 59.00-75.50; Heifers - Medium & Good 59.00-70.00; Bulls - Medium & Good 58.00-69.00; Steers - Holstein 55.00-69.50.

CALVES 422. Good & Choice - 125 to 250 pounds 95.00-112.00; Medium & Good - 125 to 250 pounds 85.00-97.00; Medium & Good - 80 to 120 pounds 85.00-

99.00; Light & Cull - all weights 90.00 & down; Holstein Bulls - return to farm up to 127.00; Holstein Heifers - return to farm up to 114.00.

LAMBS, SHEEP & GOATS 89. Choice Lambs 85.00-93.00; Medium & Good Lambs 70.00-85.00; Light & Cull Lambs 60.00-72.00; Sheep, Ewes & Bucks 21.00-28.00; Goats - all sizes (by head) 15.00-57.00.

HOGS 119. No. 1-3 Butcher Hogs - 190-225 pounds 52.50-55.75; No. 1-3 Butcher Hogs - 225-250 pounds 54.50-56.50; No. 1-3 Butcher Hogs - 250-300 pounds 50.00-55.00; Good Butcher Sows - 400 pounds down 42.00-47.00; Good Butcher Sows - 400 pounds up 42.00-46.50; Heavy Boars - over 300 pounds 37.00-40.25; Pigs - all sizes (by head) 30.00-54.00.

Sale every Monday afternoon at 3:30 p.m.; Hay & straw sale every Monday at 1:00 p.m.

3 loads. No market test.

52.00-55.25, Cutter & Bon. Utility 44.00-48, Canner & Low Cutter 38.00-44.00, Shells down to 33.00. Yield Grade No. 1, 1000-1800 lbs. sl. bulls 55.00-61.25, No. 2, 900-1500 lbs. 48.00-53.00. Feeder Cattle: Medium & Large Frame No. 1, 300-425 lbs. steers 70.00-79.00. Medium & Large Frame No. 1, 280-400 lbs. heifers 63.00-74.00. Medium & Large Frame No. 1, 300-500 lbs. bulls 65.00-75.00.

CALVES: 185. Choice vealers 88.00-95, Good 78.00-87, Standard and Good 90-120 lbs. 70.00-85, 60-85 lbs. 60.00-70, few Utility 55-85 lbs. 40.00-50.00. Farm Calves: Holstein bulls 90-125 lbs. 96.00-152.50.

HOGS 189. US No. 1-2 215-235 lbs. barrows and gilts 56.60-58, 1-3 210-255 lbs. 55.00-56, one lot 2-3 196 lbs. at 53.00, 1-3 160-180 lbs. 45.00-46.00, few 2-4 300 lbs. at 45.00. US No. 1-3 300-600 lbs. sows 45.00-47.50, 2-3 300-625 lbs. 41.00-44.50. Few Boars 34.00-38.00.

FEEDER PIGS 37. US No. 1-3 20-30 lbs. feeder pigs 23.00-31.00, few 42 lbs. at 41.00, few Utility 13-20 lbs. 18.00-20.00 - all per head.

SHEEP 219. High Choice & Prime 80-100 lbs. spring sl. lambs 80.00-85, few 40-60 lbs. 85.00-91, Choice 75-98 lbs. 75.00-80.00; Good & Choice 50-73 lbs. feeder lambs 78.00-85.00. Slaughter sheep 20.00-25.00.

GOATS 8. Few Large 25.00-27.00, few Kids 10.00-16.00 - all per head.

Penns Valley Livestock

Centre Hall, Pa.
Tuesday, June 2

Report supplied by Auction Beef Cows: Utility and Commercial 45.00-48.25; Cutters 42.00-44.75; Canners 39.50-41.50; Shells 35.00.

Heifers: Commercial 44.00-52.00.

Steers: Good 54.00-59.00; Standard 48.00-52.00.

Bulls: Good 55.50-58.50; Standard 52.00-54.00.

Feeder Cattle: 300-500 lbs. large frame 54.00-64.00; 300-500 lbs. small frame 51.00-56.00; 500-700 lbs. large frame 50.00-56.00; 500-700 lbs. small frame 48.00-53.00.

Veal Calves: Good 95.00-104.00; Standard 82.00-92.00; Utility 65.00-80.00.

Farm Calves: Bulls 115.00-150.00; Heifers 75.00-100.00.

Hogs: 55.00-57.50. Sows: 41.00-46.00.

Shoats: 25-30 lbs. per head 20.00-33.00; 30-35 lbs. per head 34.00-42.00; 35-50 lbs. per head 44.00-61.00.

Sheep: 16.00-28.00. Goats per head: 20.00-54.00.

Eighty-Four Livestock

Eighty-Four, Pa.
Monday, June 1, 1987

Report Supplied by PDA

CATTLE 329. Compared with last week's market: Choice sl. steers 66.00-71.50, few Good 60.00-65, Standard 53.00-57.50, few Utility 48.25-52.00. Few Choice sl. heifers 64.00-67, few Good 56.00-62.50, Standard 50.00-55, Utility 46.00-51.00. Breaking Utility & Commercial sl. cows 47.00-51.50, several High Yielding Commercial

ATTENTION FARMERS

The New Way To Market Your Livestock
HATFIELD PACKING CO. AND MOYER PACKING CO.
Will Receive Hogs Will Receive Cattle

At The
BLAIR-BEDFORD BUYING STATION
RD 1 Martinsburg, Pa

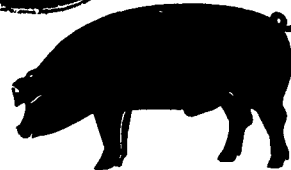
MONDAYS - Hogs 8 AM to 11:30 AM
Cattle & Calves 8 AM to 3 PM
THURSDAYS - Cattle & Calves
8 AM to 3 PM

- No commission or yardage fees deducted from check
- Livestock weighed and paid for immediately
- You may call our office sale day for prices

DALE R. HOOVER - Owner
Business 814-793-3077
Residence 814-793-2657



GWALTNEY OF SMITHFIELD, LTD.



RECEIVING HOGS: LANCASTER COUNTY FARMERS

MONDAYS: McCoy's Branch Office, Bareville
WEDNESDAYS: (Next to Bawells Butcher Shop)
& **FRIDAYS:** on Butler Rd. 717-656-9668

TUESDAYS: B & R Cattle
THURSDAYS: Marietta
717-426-3258

YORK COUNTY FARMERS
MONDAYS: Stewartstown
717-993-2564

TUESDAYS: Thomasville
717-792-2248 or 9836
Contact for information:
Ed Herrmann, 717-284-3203
or Charlie Kauffman, 215-593-5674
Future forward contracts available

FRIDAY, JULY 3 - 7:30 P.M. ON THE FARM MONTHLY BRED GILT SALE

Sale To Start Promptly Every 4 Weeks
Located 18 miles south of Lancaster, Pa., 6 miles south of Quarryville, take Rt. 272 to Little Britain, turn north, follow Little Britain Road to Jackson Road, right. 2nd farm, OR take Rt. 222, out of Quarryville to Cedar Hill Road to Little Britain Road to Jackson Road, left. Watch for sale arrows.

50 to 60 Head WHITE DIAMOND GILTS
Here Now a new cross again. Large White & Landrace, first generation true F-1 gilts. Parent stock originated from Lieske Bros. Minnesota. Very productive in litter size and feed conversion.

Vaccinated for Lepto, Erysipelas, Rhinitis, E'Coll, Pasteurella

Hand mated with Breeding Dates

Local Truck Available
No Hogs Sold On Commission

JOHN B. STOLTZFUS
R.D. 1, Kirkwood, Pa.
Abe Diffenbach, Auctioneer AU225L

NEXT SALE DATE JULY 31, 7:30 P.M.

RCMA FARMERS HELPING FARMERS...

- Increase income through over-order pricing
- No Dues
- No Assessments
- No Change in Handler
- Act Now - July 10 Deadline

For more information call

State Coordinator Harold Ely 717-278-1259
or Ed Anna, executive director at 716-344-1463

Regional Cooperative Marketing Agency
26 Harvester Ave., Batavia, N.Y. 14020

OUR BUSINESS IS SERVICE TO FARMERS

Let us help you build a successful marketing program!

Call:

717-761-2740
800-382-1356



Grains & Livestock

- Forward Contracting
- Hedging Services

CFS

PFA COMMODITY FUTURES SERVICE, INC.



ATTENTION FARMERS

EVERY MONDAY
HATFIELD PACKING CO. and MOYER PACKING CO.
Will Receive Your Hogs and Cattle at the
DANVILLE LIVESTOCK MARKET
RD 4, Danville, PA

- We will receive your hogs from 8 AM to 12 Noon every Monday Your hogs will be weighed and paid for immediately
- We will also accept your sows & boars
- Your cattle will be received from 12 30 to 5 P M We will either pay you for your cattle immediately or you may sell them dressed weight
- There will not be a commission or yardage fee deducted from your check
- You may call our office Monday morning and we will be able to tell you the base price for hogs for the day

MELVIN M. LEHMAN - Owner
Danville Buying Station
Phone: 717-275-2880