

Dairy and Livestock Sales

SUN JUNE 14 - 3PM
Antique Tractor Auction, 2
mis. N. of Sharon Springs
on NY Rt. 10, 8 mis S of
Canajoharie Exit 29, 1-90
on Rt. 10. James Mac-
Fadden Jr., Auct.

MON. JUNE 15 - 9:30AM
Frattaroli Salvage Yard,
Valuable 3 Acre Salvage
Yard, over 100 Vehicles,
Shop & Garage Eq
Stricklerstown, PA. For
Terrence Frattaroli. J
Omar Landis Auct Serv.
Jay M. Witman.

MON. JUNE 15 - 10:30AM
Norman Farms, Inc.,
"Seed Potato Farm",
Saranac Lake, NY,
Adirondack Mountain
Region. Located
Warehouse on Rt. 3, 5
mis. E. of Saranac Lake, 1
mi. W of Bloomingdale, in
Essex Co. Pirrung Aucts.,

inc

MON. JUNE 15 - 6PM
Real Estate, Personal
Property, Farm Mach.,
Guns, HH. Lower Swatara
Twp., just off Rt. 441 at
653 Oberlin Rd Take Rt
441 Exit off I-283, past
Fire Co. to first private
road on right. Farm is last
property at end of road.
Lewis & Gladys Ritter.
Kerry Pae Aucts

MON. JUNE 15 - 7PM
Real Estate, Shoe Repair
Eq, Corner of S. State St.
& Franklin St. (29 S. State
St.), Ephrata, PA, Lanc.
Co Terms by Michael
Paparo. T. Glenn &
Timothy G. Horst, Aucts.

TUES. JUNE 16 - 4:30PM
Farm Eq., Car, PU. 4 mis.
N of Fogelsville, turn off
Rt 100 onto road toward

Werley's Corner &
Kempton, Weisenberg
Twp., Lehigh Co. PA For
Francis Quier & The
Estate of Sterling N
Holben Ralph W Zet-
tlemyer Auct Co, Inc.

TUES. JUNE 16 - 7PM
Machinery, 90 Head
Cattle. Mel Manasse Farm
on Rt 79, 4 mis. S. of
Whitney Point, NY. Mel
Manasse & Ed Goodrich
Jr., Aucts.

WED. JUNE 17 - Dairy
Promotion Day at
Belleville Livestock Mkt.
Free ice cream sundaes
12 noon, milk drinking
contest at 1:30PM
followed by dairy sale
Mifflin Co. Dairy
Promotion Assoc and B.L.
Mkt

FRI JUNE 17 - 1:30PM

Commercial Real Estate,
Antiques, Personal
Property Gertrude Gise
Estate, 1444 S. George
St., York, PA Blaine N
Rentzel, Auct.

FRI. JUNE 17 - 7PM 65.5
Acre Farm in Two Parcels.
905 Spring Garden Drive,
Lower Swatara Twp,
Middletown, PA. Sanford
A Alderfer, Inc. Aucts.

FRI JUNE 19 - 10:30AM
322 Reg. & Hi Grade
Holsteins. Becker Farms,
Cobleskill, NY. From Rt. 7
in Cobleskill, farm is on
Barnerville Rd. approx 1
mi. from Rt. 7. Roger &
R.J. Becker, Owners.
Empire Livestock, Aucts.

FRI. JUNE 19 - 1:30PM
State Graded Pig Sale at

Westminster Livestock
Auction, Westminster,
MD.

FRI. JUNE 19 - 6PM
Supper, 7PM Sale
"Purebred Pride"
Summer Sale, Wayne Co
Fairgrounds, Wooster,
OH 100 Head Quality
Breeding Stock. Bryan &
Linda Eick and Tim & Sara
Hessick Marlin Woodruff,
Auct.

FRI JUNE 19 - 7PM 100
Holsteins. Perry Co., on
Rt. 74, 2 1/2 mis. NE of
Landisburg, PA, 15 mis. N
of Carlisle. V. Art Kling,
Owner & Sale Mgr.

FRI. JUNE 19 - 7PM 109
Hi Grade Holsteins, Farm
Machinery. Rt. 14 in
Hamlet of Pine Valley, NY,

4 mis. N. of Horseheads,
NY, 12 mis. S. of Watkins
Glen, NY. Theodore &
Beatrice Golden & Sons,
Owners. Harris Wilcox,
Inc., Aucts.

PUBLIC AUCTION

ANTIQUES & HOUSEHOLD
SATURDAY, JUNE 20, 1987
At 10:00 A.M.

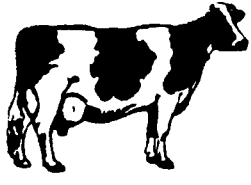
On Route 309 in Mountainville (at traffic light) turn east onto East Emaus Ave. for 1/4 mi. Salisbury Twp. So. Allentown. 12 pane 1 dr. 2 sect. cherry corner cupboard, refin. dower chest w/drawers, 6 legged chestnut ext. tab., jelly cupboard, unusual chifferobe, wal. dropleaf tab., ladies desk, 3 pc. reuphol. Victorian L.R.S., washstands, Empire chest drawers, 6 pc. BRS w/twin beds, blanket chest, wood box, nursing rocker, trunks, M.W. sewing cab., tab. Victrola, records, picture frames, plank chairs, wall rack, 2-9 spindle chairs & rocker, piano bench, stands, Pa. tin sugar box, cast waffle iron, copper kettle, collar boxes, baskets, ice tongs, milk cans, old cap pistol, butter molds, wooden spoons, wood straw fork, ladles, cow & hand bells, flatirons, Ingraham mantle clocks, Currier & Ives The Happy Family, tin toy horse & cart, mini tin lamp, oil lamps, gas light.

BOTTLES: rare open pontel w/tree on front, fork, rake & sheaf of wheat on back, Cobolt blue, shoe polish, perfume, whiskey, beer & soda, jars, jardiniere w/base. **JUGS:** M. McGarrity Hazelton & others, **CROCKS:** 1 decor., old clothing, button collection, books, Barrel butter churn, slipware plate, 1906-08 calendar plates, Old Glory Panama Canal plate, ABC plates, milk pitcher, cruets, creamers, carnival, German, depr., pressed, Bavarian, Amethyst pcs., meat platters, bread tray w/deer, goblets, sherbets, stemware, lot china, set dishes. S.P. & Co. for 12, glass butter churn, agate & cookware, heavy wagon wheels, single & dbl. trees, pony harness, pony sulky, many other interesting items.

Refreshments - Haycock Fire Co.
Conditions - Cash or Approved Check.

MRS. MILTON KNECHT

James W. Mohr
AU000627L
Harold Bellmeyer, Aucts.



COMPLETE DAIRY HERD DISPERSAL SATURDAY, JUNE 20, 1987

TIME 11:00 A.M.

To be held at the Charles I. Reed Farm. Located in southern Jefferson County. 13 miles South of Dubois, PA. 7 miles north of Punxsutawney. Follow sale signs off Route 119 in Big Run.

85 HEAD GRADE HOLSTEIN CATTLE

50-Adult Cows
14-Yearling Heifers

7-Bred Heifers
14-Younger Heifers

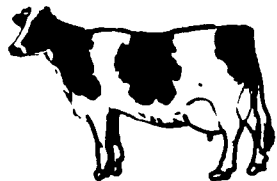
Most of this herd sired by Atlantic Bulls. A lot of these cows have recently freshened Milking up to 100# Records up to 25,000# milk. Health certificates for each animal

60 Years in the Dairy Business!

Terms: Cash or approved check.

Auctioneer:
Clayton D. Winebark
Rochester Mills, PA.
Ph. 412-286-9806
AU001024-L

Owners:
CHARLES I. REED
RUTH L. REED
Ph. 814-427-2189
or 814-427-2540



CUMBERLAND VALLEY DAIRY SALE

100 REG. & HI-GRADE HOLSTEINS
& COLORED BREEDS

FRIDAY EVENING, JUNE 26, 1987- 7:30 P.M.

AT THE FORMER CHAMBG. LIVESTOCK SALES BUILDING
1/4 MILE WEST OF INTERSTATE 81- EXIT 5 ALONG WAYNE AVE.

Featuring: Mr. Millers complete herd of Reg. & Hi-Grade Holsteins, Red & Whites and Jerseys. This is well uddered good producing young herd recently fresh with balance due this summer & early fall. Big A-I sired Holstein springers from top producing herds in Franklin, Cumberland & Washington Co Md., and number of Registered Springing heifers from plus A-1 Sires 20,000+ Dams from Franklin & Somerset herds. 1st, 2nd, 3rd & 4th calf cows recently fresh & soon to freshen from Cumberland, Adams & Frederick counties. Short bred Holstein heifers, a few colored breed dairy cows, 600#-800# open heifers, Holstein cows in various stages of lactation and a couple Reg. & Hi-Grade bulls

We have a real demand for dairy cattle and reasonable commission rates! We can accept a few more consigned dairy cattle for this June sale Do call now to consign your dairy cattle along with records and pedigrees so they can be properly advertised for our next sale the 24th of July The dairy sales will be held the 4th Friday evening of every month

Call 717-263-5702 or 263-9251

Starring The Dairy Princess with free ice cream & milk!

Auctioneer:
J. Rodger Wildeson AU-1012L
Phone 717-263-5702



SPECIAL NOTICE!!! Frattaroli Salvage Yard

Public Auction

Valuable 3 Acre Salvage Yard
Over 100 Vehicles, Shop &
Garage Equipment
Monday, June 15, 1987

Starting At: 9:30 A.M.
Real Estate At: 11:00 A.M.

Located In: Stricklerstown, Pa.
Directions: Take Route 501 North to Schaefferstown Pa. To Route 419 North. Pass Millbach Mennonite School Continue Approx. 500' Pass School And Turn On Millbach Road Continue On Millbach Road. Approx. 1000' To Stricklerstown Road To Auction Location. Real Estate Located Next To Mill Creek Rd. & Gun Club. Watch For Auction Signs.

Mill Creek Township

Real Estate Features:

Approx: 3 Acres of Valuable Land with Transferable Salvage Yard License; Lot License, Dealer License; Occupancy Permit Approved By The Commonwealth.

1 1/2 Story Frame House (nicely Remodeled) w/Alum. Siding & Storm Windows; Modern Kitchen w/Built In Cabinets; Living Room; 3 Bedrooms; Wall To Wall Carpet And Paneling, Closets; Laundry Area; Full Bath, Basement; Oil Hot Air Heat; Large 2 Story Frame Garage Meas. 47'x34' Having Upstairs Storage Area; Additional Attached 1 Story, 2 Bay Garage Having Offices Meas. 29'x37'; Other Storage Sheds.

Terms: 10% Down Day Of Auction Balance Within 30 Days.

Attorney:

George E. Christianson
411 Chestnut St.,
Lebanon, Pa. 273-1651

To Inspect Real Estate
Call Any Time (717) 949-2153
Personal Property

Approx. 100 Vehicles- Cars- Trucks- Some In Runable Condition, Others For Salvage; Van Truck With Power Plant 220-110 Elec. Compressor And Welder; International Load Star 1700 Single Screw Tractor; 1964 International 3 Ton Dump Truck; 1959 Ford 1/2 Ton Pickup Truck Inspected; 1966 International Load Star 1600 16' Flat Bed Truck; 1966 International Load Star 1890 Series 18' Crane; 1955 4 Dr. Willys; 1954 Willys; 1935 Ford Pickup w/V8 Flat Head.

Antique Parts; Scrap Iron; Many Loads Of Good Dry Firewood; 1 H.P. 60 Gal. Tank Air Compressor.

Misc. Auto Parts, Taillights, Tires, Radiators, Carburetors, 440 Mas Engine, Good Transmissions, 1,000 Hub Cabs, Much More.

30 Ton Heavy Duty Press (New); Time Clock; New York Blasting Machine; Steam Genny; Bishman Air Tire Changer; Band Saw; Battery Charger; Bench Vices; 2-1 1/2 Ton Chain Hoists; 1 Set Pehcizone Fork Fits Loaders; Valve Reseating Tools; Carpenter Tools; Mechanics Tools; Elec. Motors, Copper Fittings; Wood Burning Stove; Furniture; Welding Helmets.

Terms: Cash Or Approved Check. All Payments In Full Day Of Auction. Food Served.

Auction For:

Terrence Frattaroli
Frattaroli Auto Parts
717-949-2153

Auction Conducted By The:
J. Omar Landis Auction Service
Jay M. Witman AU00127-L
Box 501, Ephrata, Pa. 17522
717-627-0789 or 665-5735

LARGE PUBLIC AUCTION

VERY NICE 1935 CADILLAC -
2-1966 CHEVROLET CHEVY II -
2-TEC TRAVEL TRAILERS - HONDA CYCLE - TRACTOR -
MACHINERY - 1947 OLIVER CLETRAC - ANTIQUE &
COLLECTIBLE CAR PARTS - SLEIGH - ANTIQUES -
LARGE AMOUNT POWER & HAND SHOP TOOLS
WILLIAM F. SHOOK JR. ESTATE

Located along US Business 15 - 1 mile North of Square in Heidlersburg, PA or 3 miles South of York Springs - (or 10 miles North of Gettysburg, PA) - on

SATURDAY, JUNE 20 - 9:00 AM

Very nice 1935 Cadillac - Model 355 D is in original - unrestored condition - 72,000 original miles, 1966 Chevy II station wagon - 350-V8, auto, new engine, 1966 Chevy II 4-door, auto, 98,000 original miles, 1976 Travel Mate 20 ft tandem axle travel trailer, real nice with roll-out awning, 1976 Travel Mate 14 ft single axle travel trailer, real nice, 1967 Honda HM Dream motorcycle (classic) - 24,000 original miles, 1947 Oliver Model Cletrac AG crawler tractor w/blade, antique John Deere 1 1/2 HP engine, Ford 8N tractor w/12-4x28" rubber, bumper & 3 pt, Ford 501 7 ft cutter bar mower, Dearborn 212", 3 pt plow, Sauder manure loader for 8N, 9N, etc, 3 pt 6 1/2 ft disc harrow, Bradley 2 row 3 pt corn planter, lot other misc machinery, Owassa Carriage & Sleigh Co - 1 horse sleigh w/shafts, 2-wheel rubber tire trailer.

Large amount power & hand shop equipment which includes welder, power hack saw, air compressor, drill press's, heavy 5 ft metal lathe, jointer, table saws, lathes, band saw, chain saw, etc., lot lawn and garden tools and equipment, lot antique and household items, misc gun, many other items

AUCTIONEER'S NOTE: Mark Date and Plan to Attend - Lot Rare and Very Nice Items In This Sale.

TERMS: CASH
Refreshment Rights Reserved

**MRS. JUNE SHOOK -
EXECUTRIX**

C. David Redding - Auctioneer
PA License No. 742-L
Gettysburg, PA - PH: 717-334-6941