

Carty Dispersal Realizes \$3,200 Top, \$1,615 Average

SMOKETOWN — A 5-year-old Shardale Arlinda Chief daughter topped the recent Brook-Lynn-Acres complete dispersal by selling for \$3,200.

Brook-Lynn-Acres Jemini Vickie completed a high record of 22,280 pounds of milk and 810 pounds of fat in 340 days. She is projected at 24,684 pounds of milk and 858 pounds of fat in her current lactation and she carries a Cow Index of plus 182 milk and plus 11 fat with a CTPI of plus 340.

Purchased by Paul Neer, Bridgewater, Va., the VG-87 cow freshened in Dec. 2, 1986 and was bred on April 3 to Carlin-M Ivanhoe Bell. Her dam, Brook-Lynn-Acres Mark Vale-ET, classified GP-83 with records to 15,430 pounds of milk and 546 pounds of fat.

Brook-Lynn-Acres R Maple Vale, granddam of the sale topper, classified VG-87. The daughter of Citation R Maple produced two records over 22,800 pounds of milk and 760 pounds of fat.

Three lots sold for the second high bid of the sale, \$2,700. Selling

at this price were: Brook-Lynn-Acres Enha Lillipop, Brook-Lynn-Acres Calypso Debra, and Brook-Lynn-Acres Enhancer Fifi.

Lillipop, a 2-year-old daughter of Enhancer, sold to Raymond Getz of Lebanon County. Classified GP-82, she is projected at 30,484 pounds of milk and 938 pounds of fat in her first lactation. She is due in October to Valiant.

Sired by Bun-Yard Money Maker, her dam completed a top effort of 24,850 pounds of milk and 943 pounds of fat in 313 days. The VG-85 cow is out of a VG-86 Pawnee Farm Arlinda Chief dam with records to 23,600 pounds of milk and 1,040 pounds of fat.

Debra, GP-83, sold to David Pool, Woodstown, N.J. Sired by Applenotch Valiant Calypso-ET, she is projected to 25,737 pounds of milk and 887 pounds of fat in her first lactation. The 2-year-old is due in late-September to Elevation.

Her dam, sired by Quality Ultimate, classified GP-82 and owns records to 23,138 pounds of milk and 857 pounds of fat. The next dam, sired by Elevation produced a top effort of 15,410 pounds of milk.

Sired by Enhancer, Fifi will freshen in July with a Valiant calf. The bred heifer sold to Byron Armstrong, Columbus, N.J.

Her dam classified Very Good. Sired by Sky-Hi Boot Mark, her best effort still in progress at 301 days stands at 22,353 pounds of milk and 666 pounds of fat. The next dam classified VG-87 and completed three lactations over 24,000 pounds of milk and two records over 900 pounds of fat.

Two other cows from the same maternal line as Fifi sold for



Ronald L. Carty Sr. (right) holds the top selling cow at his family's recent herd dispersal. Brook-Lynn-Acres Jemini sold for \$3,200 to Paul Neer. Ronald L. Carty Jr. holds one of the three cows that sold for the next high price of \$2,700. Brook-Lynn-Acres Calypso Debra sold David Pool.

\$2,100. Brook-Lynn-Acres Mark Friskie, a Very Good 4 year old by Sky-Hi Boot Mark, will freshen in August to Tri-Town Steady Spitter. At 301 days her top record stands at 22,353 pounds of milk and 666 pounds of fat.

Her 2-year-old daughter also sold for \$2,100. The GP-80 cow will freshen in mid-June to Valiant. In 315 days, she produced 19,595 pounds of milk and 642 pounds of fat during her first lactation.

A pair of registered twin bred heifers each sold for \$1,375 to Galen Nolt, Peach Bottom. One of the Arlinda C A R Dairyman daughters was due in July to

Mandingo and the other heifer was due at sale time to Enhancer.

Their dam, sired by Elevation, owns records up to 22,020 pounds of milk and 745 pounds of fat.

The top grade sold for \$1,675. A bred heifer, she will freshen in June to Walkway Chief Mark. Her dam completed three records over 25,000 pound of milk with a top over 27,000 and two records over 1,000 pounds of fat.

Overall, the 109 lots of grade and registered animals averaged \$1,289. The top 10 lots averaged \$2,068. The 38 registered cows averaged \$1,615; 35 registered bred heifers averaged \$1,276; and

five registered yearlings averaged \$790. The top 12 grades averaged \$1,359.

About 147 buyers registered for the sale held at Smoketown Quality Dairy Sales. John Stauffer served as auctioneer, Henry Kettering read pedigrees, and Helen and Gordon Fritz managed the sale.

Ronald L. Carty and family of Columbus, N.J., owners of the Brook-Lynn-Acres herd, decided to hold the dispersal after selling their 200-acre farm for development. They built a rolling herd average of 20,119 pounds of milk and 710 pounds of fat after 24 years in the dairy business.

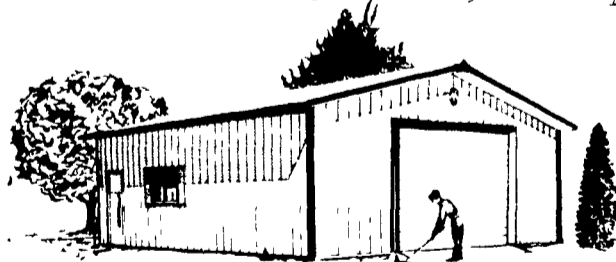
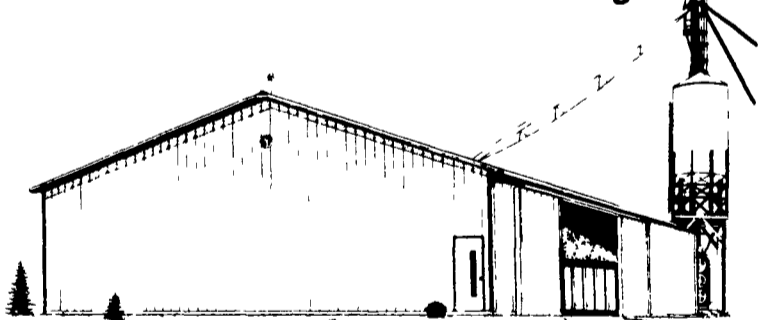
Noble To Lead Local

HOP BOTTOM — Larry Noble of Kingsley was elected president of the Tri-County Local of Eastern Milk Producers Cooperative during a recent meeting here at the Methodist Church, Eastern President Earl Forwood of Hop Bottom announced.

Other officers, also elected to one-year terms, are: John Lynch Jr. of Carbondale, vice president; Debbie Williams of South Gibson, secretary; and Charles Horton of Forest City, treasurer.

MORTON BUILDINGS Since 1903

- Horse Barns
- Riding Arenas
- Garages
- Warehouses
- Offices
- Shops
- Equipment Storage
- Aircraft Hangars



For literature call Morton, IL
800/447-7436

MORTON BUILDINGS, INC.



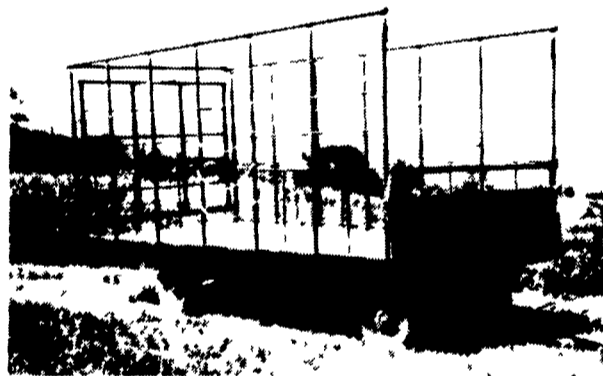
WEATHER VANE with every building purchased

MORTON BUILDINGS

Call or write today to arrange to see and hear more reasons why you should own a Morton Building.

| | |
|---|-----------------|
| 3368 York Rd Gettysburg, PA 17325 | Ph 717/624-3331 |
| Rd #10, Box 76 Meadville PA 16335 | Ph 814/336-5083 |
| State College, Box 361 Centre Hall, PA 16828 | Ph 814/364-9500 |
| Box 126 Phillipsburg, NJ 08865 | Ph 201/454-7900 |
| 1918 Industrial Drive Culpeper, VA 22701 | Ph 703/825-3633 |
| P O Box 187 Harrington, DE 19952 | Ph 302/398-8100 |

BEST BUY of the YEAR



- 6" Steel Main Beam
- 2" Vertical Tubing Drilling so that the 1" Horizontal tubing extends Full Length of Wagon
- Front-Side and Rear Loading and Unloading
- 2x8 Pressure Treated Lumber Floor
- 2x6 Oak Cross Beams
- Beds are 8' wide, available in 18 or 21' lengths. Racks are 90" high.
- NEW FEATURE: 6" Channel across back for pushing wagon without damaging bed.
- Primed & Painted with Rust-O-Leum Paint

FOR FURTHER INFORMATION, CALL YOUR LOCAL DEALER

LOST CREEK IMPLEMENT
Oakland Mill PA
717-463-2161

MELROSE FARM SERVICE
Greencastle PA
717-597-3138

KELLER BROS.
Lebanon PA
717-949-6501

DUNKLE & GREIB
Mill Hill, PA
717-726-3115

WALTER G. COALE, INC.
Churchville, MD
301-734-7722

TOBIAS EQUIPMENT CO., INC.
Haltix, PA
717-362-3132

NORTHEAST DISTRIBUTING
West Clifford PA
717-222-9020

VALLEY IMPLEMENT SALES
Harrisburg, VA
703-434-9961

CHAMBERSBURG FARM SUPPLY
Chambersburg PA
717-264-3533

OXFORD GREENLINE, INC.
Oxford, PA
215-932-2753

PAUL SHOYER'S, INC.
Loysville, PA
717-789-3117

A.B.C. GROFF
New Holland, PA
717-354-4731

CARLISLE FARM SERVICE
Carlisle, PA
717-243-4419

CLARK'S FARM SUPPLY
Williamsport, PA
717-494-0060

OSWALD EQUIP. CO.
Hartstown, PA
814-382-4445

HETRICKS FARM SUPPLY
New Bethlehem, PA
814-273-3507

WATSONS INC.
Sharon, PA
412-346-6514

SUMMIT MACHY, INC.
Somerset PA
814-445-2528

LONE MAPLE SALES & SRV.
New Alexandria PA
412-668-7172

GOSLIN SALES INC.
Rica's Landing, PA
412-592-5100

Manufactured By **CLW MFG., Inc.**

Newburg, PA 17240