

# GIGANTIC 1-DAY SALE

## APPLERIDGE FARM COMPLETE DISPERSAL

### Saturday, May 30, 1987

**AT THE FARM WALPOLE, NEW HAMPSHIRE** — Location: Farm on west side of Rt. 12 south of Walpole. 5 miles from Vt. Exit 5 from I-91. Signs posted from 91 sale day.

### EQUIPMENT SELLING AT 10 A.M. SHARP

**A complete line of Farm Machinery, Equipment and Shop Tools Including:**

**TRACTORS:** Ford 8700 with turbo & cab; Ford 6600 cab; Ford 3550 loader & cab; John Deere 3020 with loader.

**TRUCKS:** 1981 Ford 350 cattle truck; 1980 GMC Sierra 15 pickup; 1974 Dodge 600 2 ton platform dump; 1971 Chev. 2 ton C50 platform dump; 1970 GMC 2 ton dump; 1948 White 2 ton dump.

**MACHINERY:** Hesston chopper with hay & corn head; Hesston corn picker 2 screens; Richardton dump wagon; New Holland 489 haybine; New Holland manure spreader; Int. Har. manure spreader; Int. Har. 4 row corn planter; Int. Har. chisel plow; Int. Har. 4 bottom plow; New Holland side delivery rake; New Holland baler with kicker; 2 New Holland hay wagons with sides; 2 Bough hay wagons with sides; 1 sod buster; 1 Ford 14' disc harrow; 1 Bush Hog 8' side draft; 1 14' platform hay wagon; 1 Gehl disc mower; 1 Brillion 7' seeder; 1 Knight Little Augie mixer wagon; 1

Gehl fertilizer spreader; 1 New Holland L425 skid steer loader; 1 18' portable hay elevator; 1 cement mixer; 1 Allis Chalmers table blower.

**IRRIGATION EQUIPMENT:** 1 irrigation pump; 700' of 7" irrigation pipe; 800' of 5" irrigation pipe; 3 spray guns for irrigation.

**ASSORTED MACHINERY & EQUIPMENT:** 1 saw rig; 1 generator; 1 vacuum pump; 1 portable vacuum pump; 2 portable washers; 1 heated waterer; 2 sections of lockup gates; other assorted equipment.

**SHOP TOOLS:** wrenches; air compressor; vices (bench); 2 floor jacks; drills & bits; 2 drill presses; 2 grinders; nuts & bolts; skill saws; welder & equipment; cutting torch; drop cords; extension cords; 2 battery chargers; many other tools too numerous to mention.

### ONE OF THE FINEST HERDS IN THE ENTIRE NORTHEAST

### CATTLE SELLING AT 12 NOON 239 Registered Holsteins

132 Cows — 34 Bred Heifers — 73 Yearlings & Calves

Rolling Herd Average 17,450 Milk 3.7% 637 Fat  
Selling 8- EX 35- VG 52- GP— 27 as 2 & 3 yr. olds. 23 Valiant 15 Tony Daughters Sell.

*One of the Top Herds to be Offered this Year!*  
Interstate Tested — Vaccinated — Pregnancy Examined

### REAL ESTATE SELLING AT 5:00 P.M.

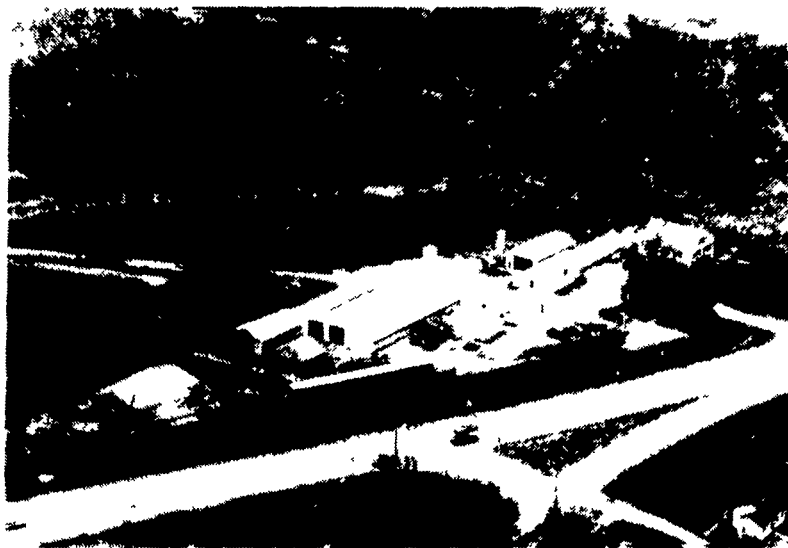
Real Estate offered as follows:

1. Approximately 2 acres on east side of Route 12 with 700 feet frontage.
2. Approximately 58 acres on the east side of Route 12 about 34 acres open and balance of acreage wooded.
3. 176 acres main farm and buildings including about 130 tillable acres of river bottom land. Beautifully restored 1810 colonial timber frame 4 bedroom, 2 bath home with modern deluxe colonial country kitchen that includes a working fireplace. Another special feature is a 5 bay attached garage or carriage shed. The dairy facility is modern 105 cow freestall with Delaval Parlor and adjacent hospital area. Almost new Mueller 2000 gallon milk tank and all other equipment for a successful milking operation included. Several out buildings suitable for raising youngstock and a heated & enclosed machinery shop.
4. All of the above as one unit whichever grosses more.

Sellers reserve the right of last bid on each and all of the real estate offering. Buyer is responsible for a minimum non-refundable down payment to be made with a certified bank check as follows for offering number:

- Offering #1— \$ 5,000 Down
- Offering #2— \$20,000 Down
- Offering #3— \$50,000 Down
- Offering #4— \$50,000 Down

Final closing within 90 days of the sale.



#### SALE MANAGERS NOTE:

Because this sale was booked late, individual pictures of some cows selling were not available for this ad. The catalog will include them. If you are interested in sincere breed improvement and wish to take advantage of the lower cattle prices in New England, we'll guarantee you this is a sale you won't want to miss.

### CONTACT SALE MANAGERS FOR CATALOGS

**Owners:**  
**WILLIAM PICKARD & JOE WINSTEN**  
Walpole, N.H.  
603-756-4844

**Sale Managed By:**  
**PIONEER VALLEY SALES & SERVICE**  
Box 779, Hadley, MA 01035  
Alan Lilly 413-506-1175  
A. Bruce Whittier

FOR INFORMATION IN PA, CONTACT:  
Paul Snyder — Ephrata, PA — 717-733-7052