

## New ATV Blade Handy Around Farm

MOBILE, Ala. — Bush Hog's new FB series front-mounted blade can be attached to all terrain vehicles (ATVs), according to Robert O. Moore, vice president for sales.

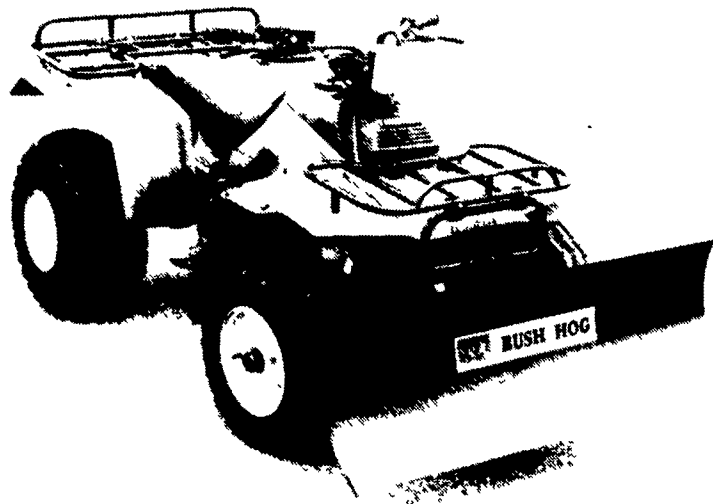
"These blades are ideal for moving snow, sand, gravel, or dirt or for use around barns, chicken houses and feed lots," Moore said. "While they are especially maneuverable in confined spaces, they are rugged enough and powerful enough to tackle big jobs

as well." The blades are available in 42- and 46-inch widths and are constructed of 12-gauge rolled steel with reinforcing ribs. The blades mount easily to most ATV models that have a reverse gear and, after their initial installation, they can be mounted or detached in less than a minute without tools.

There are three blade settings — straight or angled 18 degrees left or right — and the lift height is adjustable up to 6 inches. The lift

handle is conveniently located and secured by a wing nut for easy handle removal. There are no annoying cables or chains to contend with.

For further information, write Bush Hog, Department FB-NR, P.O. Box 1039, Selma, AL 36701-1039.



Bush Hog's ATV blade has three angle settings and comes in 42- and 46-inch widths.

LAFAYETTE, Ind. — Even-Flo, Inc. has developed a line of epoxy coatings designed to repair and strengthen old or damaged concrete surfaces.

Formulated to resist the eroding effects of acid and moisture, Even-Floor epoxy coating systems are extremely durable and last up to five times longer than concrete. Unlike many other epoxy products, several Even-Floor epoxies are stress relieved, eliminating the risks of fracturing or breaking away from established surfaces.

Marketed for the first time under the Even-Floor brand name, the new epoxy coatings are ideal for milking parlors, milk houses, feed bunks and mangers, as well as floors in hog facilities and liquid manure storage pits.

In addition, Even-Flo offers special fast-curing and low-

## Herbicide Tested For Corn, Wheat

MEMPHIS, Tenn. — On May 1, 1987, Gilmore, Inc. received an Experimental Use Permit for TOUGH postemergent herbicide for use on peanuts, corn and wheat. TOUGH is the tradename for the compound, Pyridate.

The EUP label in corn and wheat recommends TOUGH for the postemergence control of annual broadleaf weeds, especially triazine resistant weeds. TOUGH

can be tankmixed with atrazine or cyanazine. TOUGH is safe for corn and wheat and can be applied at nearly any stage of the crop.

Since the temporary tolerance is established for peanuts, corn and wheat the crops treated under this EUP can be marketed without restrictions.

Additional crops being submitted for clearance will be alfalfa and sorghum.

## Epoxy Repairs Damaged Concrete

temperature epoxies to meet specific requirements. Even-Floor has been used for several years as

a replacement for steel doors in A.O. Smith Harvestore and Slurrystore Structures.

## Cure Sulfur Deficiency With Manure

COLLEGE PARK, Md. — Soil low in sulfur poses a serious problem for Maryland farmers. A severe shortage can cut corn yields dramatically. And even a slight deficiency can reduce the quality of corn used for forage.

But livestock farmers can typically prevent a shortage in fields where they spread manure, says V. Allan Bandel, a fertilizer specialist for The University of Maryland Cooperative Extension Service.

That's because manure is sulfur-rich. Consider: Each ton of cattle manure contains a pound of sulfur, on the average and a single ton of chicken manure averages nine pounds of this protein-building chemical. Most other kinds of livestock manure contain .2 to two pounds of sulfur per ton.

Sulfur deficiencies are most likely on light, sandy soil — like those on Maryland's Eastern Shore — as well as on farms throughout the state where no livestock manure is spread. Most sulfur-

deficient soils are low in organic matter.

How can you spot a sulfur problem? Look for a yellowing of leaves, starting at the top of a plant. Conversely, a nitrogen deficiency reveals itself when yellowing starts at the bottom of a plant.

You can correct a sulfur shortage in corn by applying 40 pounds of sulfur per acre, says Bandel. Then apply approximately 20 pounds of sulfur per acre in following growing seasons.

You can also easily remedy the problem with direct manure applications. But to apply the correct amounts of manure, you need to test both your soil and the manure that you will apply.

For a free manure test and a soil test that's accurate and modestly priced, take advantage of the soil testing laboratory at The University of Maryland College Park. Your county Extension office will provide kits and printed instructions.



# SOLO

## Outperforms

If you need a backpack sprayer that's lightweight, dependable, and easy to handle... Buy a SOLO #1 Worldwide.

Parts - Sales - Service

### Martin's Repair Shop

R.D. 4 Box 49  
Ephrata, PA 17522  
717-733-3015

Try the new 5 Gal. Models 435 or 485

Will Ship UPS

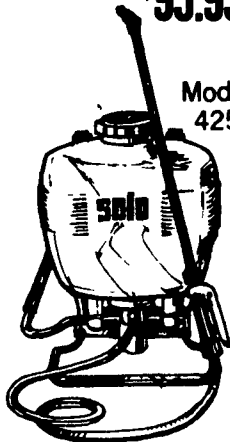
Master Card & Visa Accepted

List \$119.95

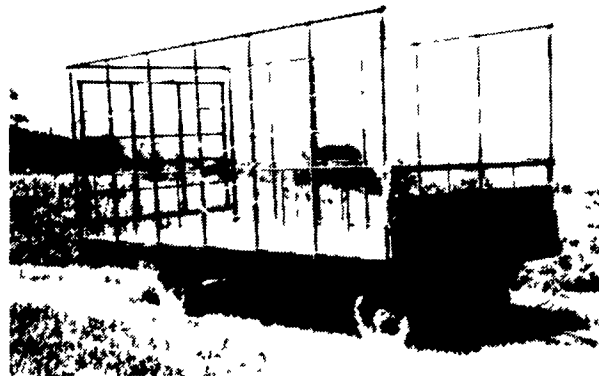
Our Price

**\$95.95**

Model 425



## BEST BUY of the YEAR



- 6" Steel Main Beam
- 2" Vertical Tubing Drilling so that the 1" Horizontal tubing extends Full Length of Wagon
- Front-Side and Rear Loading and Unloading
- 2x8 Pressure Treated Lumber Floor
- 2x6 Oak Cross Beams
- Beds are 8' wide, available in 18 or 21' lengths. Racks are 90" high.
- NEW FEATURE: 6" Channel across back for pushing wagon without damaging bed.
- Primed & Painted with Rust-O-Leum Paint

FOR FURTHER INFORMATION, CALL YOUR LOCAL DEALER

LOST CREEK IMPLEMENT  
Oakland Mill, PA  
717-463-2161

TOBIAS EQUIPMENT CO., INC.  
Hallaz, PA  
717-362-3132

PAUL SHOVER'S, INC.  
Loysville, PA  
717-769-3117

HETRICKS FARM SUPPLY  
New Bethlehem PA  
814-275-3507

MELROSE FARM SERVICE  
Greencastle, PA  
717-597-3138

NORTHEAST DISTRIBUTING  
West Clifford, PA  
717-222-9020

A.B.C. GROFF  
New Holland, PA  
717-354-4731

WATSONS INC.  
Sharon, PA  
412-346-6514

KELLER BROS.  
Lebanon, PA  
717-949-6501

VALLEY IMPLEMENT SALES  
Harrisonburg, VA  
703-434-9961

CARLISLE FARM SERVICE  
Carlisle, PA  
717-243-4419

SUMMIT MACHY, INC.  
Somerset, PA  
814-445-2528

DUNKLE & GREIB  
Mill Hill, PA  
717-726-3115

CHAMBERSBURG FARM SUPPLY  
Chambersburg, PA  
717-264-3533

CLARK'S FARM SUPPLY  
Williamsport, PA  
717-494-0060

LONG MAPLE SALES & SRY.  
New Alexandria PA  
412-668-7172

WALTER G. COALE, INC.  
Churchville, MD  
301-734-7722

OXFORD GREENLINE, INC.  
Oxford, PA  
215-932-2753

OSWALD EQUIP. CO.  
Hertstown, PA  
814-382-4445

GOSLIN SALES INC.  
Rice's Landing, PA  
412-592-5100

## HIAWATHA FASTENERS

6261 E. TAFT ROAD • NORTH SYRACUSE, N.Y. • 13212  
PHONE (315) 452-0033

Purchase Your Bolts and Nuts

**BY THE POUND**

By Phone or Mail — We Ship UPS

- 3/8 Hex Nuts. . . . . Only **\$1.76** per 100
- 3/8x1 Grade 5 Bolts . . . . . Only **\$5.63** per 100

This is only a sample of the price that you receive when you buy your bolts and nuts by the pound.

- Nuts • Bolts • Washers • High Strength Bolts
- Grade 5 Plow Bolts • Grade 5 Clipped Plow Bolts
- Chain • Dry Wall Screws • Nails

**We Stock The Best Supply of Grade 8 Bolts In Coarse & Fine Threads In Central New York!**

- 5/8x10 1/2 Grade 8 . . . . . **\$3.50** each
- 3/4x12 Grade 8 . . . . . **\$5.90** each

Manufactured By **CLW MFG., Inc.**

Newburg, PA 17240