

THE OLD FARMER'S ALMANAC

MAY 18-24, 1987

Don't poke other fellas with the tips of your umbrellas.

Last quarter of the moon May 19 (Tues) On May 20, 1536, Henry VIII married Jane Seymour one day after beheading his last wife, Anne Boleyn The Homestead Bill was passed by Congress May 19, 1862 Average length of days for the week 14 hours, 48 minutes The Back Bay Cycle and Motor Company of Boston became America's first public motor garage May 24, 1899 *Fear not death, for the sooner we die, the longer we shall be immortal*



Ask the Old Farmer: The Civil War song, 'When Johnny Comes Marching Home,' contains the lyrics 'And we'll all drink stone wine' What is stone wine? M B, Charlotte N C

Stone wine was made from the hard crust formed on the lees left from making ordinary wine, with cream of tartar added It was a poor variety, generally speaking, but with a high muzzle velocity! Home Hints Use moss to cover bare spots under trees Water it well

OLD FARMER'S WEATHER FORECAST

New England: Beginning of week warm with rain north, showers south, mid through end of week clear and warm south rain continues north
Greater New York-New Jersey: Week begins with intermittent showers and warm temperatures, mid through end of week showers and mild temperatures
Middle Atlantic Coastal: Beginning of week hot with scattered showers mid through end of week cloudy and cool showers west

(All Rights Reserved Yankee Publishing Incorporated Dublin NH 03444)

Greencastle Livestock

Greencastle, Pa.

Monday, May 11, 1987

CATTLE 555. SLAUGHTER STEERS: Choice & Prime 70.00-73.75, few to 75.50; Good & Choice 65.00-71.50; Good & Choice - Holstein 57.00-62.75; Standard & Good - Holstein 52.00-57.00.

SLAUGHTER HEIFERS: Choice 66.50-71.50, few to 73.75; Good & Choice 62.00-68.00; Standard & Good 55.00-63.50.

COWS: Utility & Commercial 43.00-48.50, few to 52.75; Cutter & Boning Utility 44.50-49.50, few to 52.00; Canner & Low Cutter 44.50 & down.

BULLS - ALL WEIGHTS: Yield Grade 1 56.50-60.75, few to 62.75; Yield Grade 2 51.00-57.00.

STOCKER CATTLE - ALL WEIGHTS. Steers - Medium & Good 68.00-81.50; Heifers - Medium & Good 59.00-71.00; Bulls - Medium & Good 58.50-75.00; Steers - Holstein 50.00-64.00.

CALVES 401. Good & Choice - 125 to 250 pounds 95.00-111.00; Medium & Good - 125 to 250 pounds 78.00-97.00; Medium & Good - 80 to 120 pounds 80.00-100.00; Light & Cull - all weights 82.00 & down; Holstein Bulls - return to farm up to 135.00; Holstein Heifers - return to farm up to 115.00.

LAMBS, SHEEP & GOATS 89. Choice Lambs 97.00-101.50; Medium & Good Lambs 75.00-97.00; Light & Cull Lambs 70.00-90.00; Sheep, Ewes & Bucks 22.00-27.50; Goats - all sizes (by head) 10.00-46.00.

HOGS 130. No. 1-3 Butcher Hogs - 190-225 pounds 54.00-55.60; No. 1-3 Butcher Hogs - 225-250 pounds

55.00-57.00; No. 1-3 Butcher Hogs - 250-300 pounds 47.00-54.00; Good Butcher Sows - 400 pounds down 45.00-49.50; Good Butcher Sows - 400 pounds up 45.00-49.50; Heavy Boars - over 300 pounds 38.00-40.50; Pigs - all sizes (by head) 29.00-50.00.

Sale every Monday afternoon at 3:30 p.m.; Hay & straw sale every Monday at 1:00 p.m.

9 loads.
 Alfalfa 130.00-154.00.
 Mixed 100.00-135.00.

New Wilmington Livestock Auction

New Wilmington, Pa.

Monday, May 11, 1987

Report Supplied by PDA

CATTLE 287...PDA. Compared with last Monday's market: Slaughter cows mostly \$1 higher. Few Choice sl. steers 66.50-66.75, few Good 64.50-65.50, few Standard 53.00-58, few Utility 48.75-52.00. Few Choice sl. heifers 63.00-69, one 72.00, few Good 56.50-58.50, few Standard 49-55.25. Breaking Utility & Commercial sl. cows 46.75-50, one 51.50, few yield grade 4-5, 44-46.75, Cutter & Bon. Utility 43.00-48, few high dressing 48-49.50, Canner & Low Cutter 37-43.50, Shells down to 31.00. Few Yield Grade No. 1, 1300-1940 lbs. sl. bulls 53.75-57.75, one No. 2 1575 lbs. 49.00. Feeder Cattle: Few Medium Frame No. 1, 415-635 lbs. steers 61.00-68, Med. & Large #1, 700-1035 lbs. 56-62.50. Few Medium Frame No. 1, 415-540 lbs. heifers 58.50-63.50, few Medium #2, 390-650 lbs. 54.50-64.50. Few Medium 1, 315-385 lbs. bulls 74.00-85.50, Med. & Large #1, 445-650 lbs. 59-69.50, few 640-835 lbs. 52.50-55.00.

CALVES 238... Prime vealers, individual's 110.00, Choice 94.00-107, few Good 78.00-90, Standard

and Good 90-135 lbs. 73.00-85, 65-85 lbs. 63.00-75, Utility 50-80 lbs. 49.00-58.00. Farm Calves: Holstein Bulls 90-130 lbs. 100.00-149, lot 85 lbs. 85.00; Holstein Heifers 90-120 lbs. 74.00-95.00. Beef Cross Bulls and Heifers 80-130 lbs. 75.00-92.50.

HOGS 418... Barrows and gilts \$2.50 to \$3 higher. US No. 1-3 215-265 lbs. 54.00-56, 2-3 215-285 lbs. 52.00-54.25, few 1-3 200-210 lbs. 50.00-52.00. Sows \$1.50 higher. US No. 1-3 330-595 lbs. sows 44.50-49.50 Boars 36.50-43.00.

FEEDER PIGS 8... Few US No. 1-3 40-55 lbs. feeder pigs 40.00-59.00 - all per head.

SHEEP 165... High Choice and Prime 70-90 lbs. spring lambs 95.00-106, few 115-120 lbs. 85.00-90, Choice 60-90 lbs. 85.00-98, Good and Choice 35-75 lbs. feeder lambs 75.00-85.00. Slaughter ewes 8.00-22.00.

GOATS 15... Medium & Large 15.00-31.00, Kids 11.00-20.00 - all per head.

Eighty-Four Livestock Auction

Eighty-Four, Pa.

Monday, May 11, 1987

Report Supplied by PDA

CATTLE 302...PDA.. REPORT IS SUPPLIED BY THE AUCTION ...Choice sl. steers 64.00-67.75, Good 57.75-63.50, Standard 49.00-54, Utility 45.00-48.50. Choice sl. heifers 63.00-66, Good 55.00-60.50, Standard 47.50-53, Utility 44.50-48.00. Breaking Utility & Commercial sl. cows 48.00-52, Cutter &

Bon. Utility 41.00-48, Canner & Low Cutter 36.50-41.50, Shells down to 25.00. Yield Grade No. 1, 1100-1965 lbs. sl. bulls 58.00-64.75, No. 2, 950-1500 lbs. 46.00-50.00. Feeder Cattle: Medium & Large Frame No. 1, 280-550 lbs. steers 73.00-85, 600-900 lbs. 60.00-73.25. Medium Frame No. 1, 300-500 lbs. heifers 65.00-72.00. Medium Frame No. 1, 400-600 lbs. bulls 67.00-87, No. 2, 500-650 lbs. 55.00-60.00.

CALVES 157... Choice vealers 93.00-103, Good 79.00-90, Standard and Good 90-120 lbs. 62.00-69, 60-85 lbs. 51.00-63, few Utility 60-85 lbs. 45.00-60.00. Farm Calves: Holstein bulls 90-125 lbs. 80.00-152.50, Holstein Heifers 85-115 lbs. 75.00-105.00.

HOGS 62... US No. 1-3 202-230 lbs. barrows and gilts 53.00-56.00, lot 1-3 196 lbs. 51.00. US No. 1-3 300-600 lbs. sows 42.00-47.00, 2-3 400-625 lbs. 37.00-42.50. Boars 30.00-35.00.

FEEDER PIGS 10... Few US No. 1-3 40-60 lbs. feeder pigs 40.00-42.00 - all per head.

SHEEP 217... High Choice & Prime 55-70 lbs. spring sl. lambs 90.00-101, Choice 70 lbs. 99.00, Good 70 lbs. 75.00. Slaughter ewes 20.00-

35.00.
GOATS 37... Large 38.00, Kids 12.00-15.00 - all per head.

New Holland Sales Stables

New Holland Dairy

Wednesday, May 13, 1987

Report supplied by auction

Reported receipts of 93 cows, 83 heifers, and 2 bulls. Market stronger.

Load of PA fresh cows 1100.00-1400.00.

Load of PA fresh cows 610.00-1100.00.

Load of PA fresh cows 725.00-1020.00.

Load of Canada springers 690.00-900.00.

Load of Perry Co. fresh cows 1220.00-1290.00.

Load of PA fresh cows 660.00-935.00.

Load of 52 head, all stage cows 400.00-880.00.

Locally consigned cows 370.00-1000.00.

Springing heifers 610.00-940.00.

Open heifers 325.00-500.00.
 Bulls 590.00-635.00.

CRIPPLED AND DISABLED

Cows, Steers & Bulls For Slaughter Under USDA Inspection

Call Wayne Taylor

717-866-6289

215-286-9400

Lebanon, Berks, Lancaster & Chester Counties

FRIDAY, JUNE 5

ON THE FARM MONTHLY

BRED GILT SALE

PLEASE NOTE

JUNE 5

EVENING SALE 7:30 PM

Sale To Start Promptly Every 4 Weeks

Located 18 miles south of Lancaster, Pa., 6 miles south of Quarryville, take Rt. 272 to Little Britain, turn north, follow Little Britain Road to Jackson Road, right. 2nd farm, OR take Rt. 222, out of Quarryville to Cedar Hill Road to Little Britain Road to Jackson Road, left. Watch for sale arrows.

25 Head Due Between June 7 & 14
 22 Head Due Between June 14 & 28

50 to 60 Head

WHITE DIAMOND GILTS

Here Now a new cross again. Large White & Landrace, first generation true F-1 gilts. Parent stock originated from Lieske Bros. Minnesota. Very productive in litter size and feed conversion.

Vaccinated for Lepto, Erysipias, Rhinitis, E'Coll, Pasteuerella

Hand mated with Breeding Dates

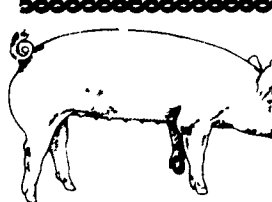
Local Truck Available
 No Hogs Sold On Commission

JOHN B. STOLTZFUS

R.D. 1, Kirkwood, Pa.

Abe Diefenbach, Auctioneer AU225L

NEXT SALE DATE JULY 3, 7:30 P.M.



EMERY'S BUYING STATION

OPEN TO RECEIVE YOUR MARKET HOGS

AT THE GREEN DRAGON MARKET
 RD 4, EPHRATA, PA 17522
 1 MILE NORTH OF EPHRATA
 ON NORTH STATE STREET.

HOURS: MONDAY, TUESDAY, and WEDNESDAY 7:00 A.M. to 11:30 A.M.

215-458-5677 Residence
 717-733-9648 Office

215-458-5677 Residence
 717-733-9648 Office

YOU ARE PAID FOR YOUR HOGS IMMEDIATELY

Ken & Lois Emery, Proprietors



ATTENTION FARMERS

EVERY MONDAY

HATFIELD PACKING CO. and MOYER PACKING CO.

Will Receive Your Hogs and Cattle at the DANVILLE LIVESTOCK MARKET

RD 4, Danville, PA

- We will receive your hogs from 8 AM to 12 Noon every Monday Your hogs will be weighed and paid for immediately
- We will also accept your sows & boars
- Your cattle will be received from 12 30 to 5 P M We will either pay you for your cattle immediately or you may sell them dressed weight
- There will not be a commission or yardage fee deducted from your check
- You may call our office Monday morning and we will be able to tell you the base price for hogs for the day

MELVIN M. LEHMAN - Owner
 Danville Buying Station

Phone: 717-275-2880

OUR BUSINESS IS SERVICE TO FARMERS

Let us help you build a successful marketing program!

Call:

717-761-2740

800-382-1356



Grains & Livestock

- Forward Contracting
- Hedging Services

CFS

PFA COMMODITY FUTURES SERVICE, INC.