

# Lebanon County 4-H'ers Named Keystone Winners

LEBANON — Six Lebanon County 4-H members have been named Keystone winners in nine areas of the 4-H National Awards Scholarship Program.

They are: Eric Funk, Lebanon; Jennifer Alwein, Lebanon; Alan Auman, Lebanon; Rebecca Grumbine, Myerstown; Jeff Wagner, Lebanon; and Andrew Smith, Myerstown.

Keystone winners are the semi-finalists in the selection of state 4-H winners in each of 40 program categories.

The state winner in each category will receive an expense-paid trip to National 4-H Congress in Chicago. Keystone winners were selected on the quality and depth of their 4-H involvement. The final

selection results from interviews held at Penn State. The state winner will be selected on the basis of poise and maturity as well as his or her 4-H experiences.

Rebecca Grumbine is a Keystone winner in the Gardening and Home Management program areas. She is a member of the J&M Variety 4-H Club and Lebanon County Teen Council. An active 4-H'er, Rebecca has participated in State Achievement Days, Olympic Day, and the Lebanon Area Fair. She has presented demonstrations on the county, regional, and state levels. Rebecca is the daughter of Martha and Ray Grumbine.

Eric Funk is a Keystone winner in the Home Environment and Wood Science programs. He is a

member of the Cedar Valley 4-H Club and Teen Council. Eric is a teen leader helping younger members develop project skills. Eric has taken projects in the following areas: management, design, wood working, leadership, archery, and riflery. He will be attending Citizenship-Washington Focus this summer. He has earned regional honors for his demonstration presentation skills. Eric is the son of Judy and Richard Funk.

Andrew Smith is a Keystone winner in Consumer Education. He is a member of the Myerstown Raiders 4-H Club and vice-president of the Lebanon County Teen Council. Andrew was a member of the County Consumer Presentation Team which won top

honors during competition at State 4-H Achievement Days. He has participated in 4-H Capital Days, Citizenship-Washington Focus, PA Leadership Congress, State Achievement Days, Olympic Day, Lebanon Area Fair, and 4-H Camp. Andrew is the son of Mary and Lee Smith.

Jennifer Allwein has been selected as a Keystone Winner in the Bicycle Program. She is a member of the Cedar Valley 4-H Club and Lebanon County Teen Council. Jennifer's other 4-H activities include PA Leadership Congress, Olympic Day, Lebanon Area Fair, State Achievement Days and 4-H Camp. She will represent the county this summer at Citizenship-Washington Focus

in Washington, D.C.

Alan Auman is a Keystone Winner in the Personal Development category. Alan is a member of the Lebanon County Livestock Club, NoSoAnn Dairy Club, Lebanon County Tractor Club, South Mountain Community 4-H Club, and Lebanon County Teen Council. In addition to a wide variety of projects, Alan serves as a teen leader assisting adult volunteers and working with younger members.

Jeff Wagner is a Keystone Winner in Health and Wildlife and Fisheries. He is a member of the Cedar Valley 4-H Club. Jeff's other 4-H activities include PA Leadership Congress, State Achievement Days, and the Lebanon Area Fair.

## ARMSTRONG FARM MUSCLE



All Orders Over \$250 Delivered Free To Your Farm! (Orders Under \$250... Only A Small Extra Fee)

We Install Tires On Your Farm

- Centre Hall • Williamsport
- Sunbury • Allentown
- North Penna. • New Jersey
- Northern Maryland

Ask About Our Guarantee On Rear Tires Strongest In The Country

OFFER EXTENDED...

FREE MOUNTING ON Super Hi-Power Lug Radials

New! 5-Year Warranty

14 9R28 10 Ply	\$325 00
16 9R28 10 Ply	\$399 00
18 4R34 6 Ply	\$399 00
16R38 6 Ply	\$429 00
18 4R38 6 Ply	\$459 00
18 4R38 8 Ply	\$489 00
18 4R26 10 Ply	\$449 00
20R34 8 Ply	\$639 00
20 8R38 8 Ply	\$649 00
20 8R38 10 Ply	\$699 00

## ARMSTRONG FARM MUSCLE

### ARMSTRONG FARM TIRES

Hi Power Lug



New! 5-Year Warranty

11 2x24 4 Ply	\$106 00
11 2x24 6 Ply	\$125 00
14 9x24 4 Ply	\$161 00
14 9x24 6 Ply	\$172 00
14 9x24 8 Ply	\$200 00
16 9x24 6 Ply	\$200 00
16 9x24 8 Ply	\$220 00
14 9x26 6 Ply	\$180 00
18 4x26 6 Ply	\$247 00
23 1x26 8 Ply	\$525 00
11 2x28 4 Ply	\$120 00
12 4x28 4 Ply	\$137 00
13 6x28 4 Ply	\$190 00
13 6x28 6 Ply	\$165 00
13 6x28 8 Ply	\$195 00
14 9x28 4 Ply	\$165 00
14 9x28 6 Ply	\$185 00
16 9x28 6 Ply	\$225 00
16 9x28 8 Ply	\$245 00
16 9x30 6 Ply	\$240 00
18 4x28 6 Ply	\$300 00
18 4x30 6 Ply	\$270 00
23 1x30 8 Ply	\$650 00
24 5x32 10 Ply	\$775 00
16 9x34 6 Ply	\$270 00
18 4x34 6 Ply	\$310 00
18 4x34 8 Ply	\$335 00
20 8x34 6 Ply	\$479 00
20 8x34 8 Ply	\$510 00
23 1x26 10 Ply	\$600 00
23 1x34 8 Ply	\$689 00
11 2x38 4 Ply	\$147 00
12 4x38 4 Ply	\$175 00
13 6x38 4 Ply	\$185 00
13 6x38 6 Ply	\$205 00
14 9x38 6 Ply	\$224 00
15 5x38 6 Ply	\$235 00
15 5x38 8 Ply	\$260 00
16 9x38 6 Ply	\$295 00
16 9x38 8 Ply	\$325 00
18 4x38 6 Ply	\$340 00
18 4x38 8 Ply	\$380 00
20 8x38 8 Ply	\$520 00

Service Available.... Call For Quote!

### ARMSTRONG

Loader-Dozer



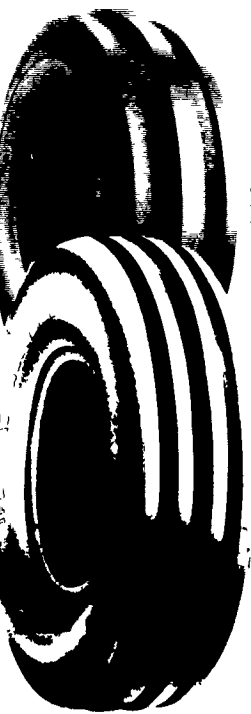
★ TUBELESS ★		
16 9x24 8 Ply	\$265 00	
16 9x24 10 Ply	\$330 00	
17 5Lx24 6 Ply	\$245 00	
17 5x24 8 Ply	\$270 00	
15 5x25 12 Ply	\$310 00	
17 5x25 12 Ply	\$440 00	
19 5Lx24 10 Ply	\$390 00	
19 5Lx24 12 Ply	\$430 00	
12Lx24 12 Ply	\$500 00	
20 5x25 12 Ply	\$643 00	
23 5x25 12 Ply	\$960 00	
23 5x25 16 Ply	\$1 000 00	

### ARMSTRONG

★ TUBE TYPE ★		
14 9x24 6 Ply	\$200 00	
14 9x24 8 Ply	\$220 00	
16 9x24 6 Ply	\$220 00	
16 9x24 8 Ply	\$235 00	
16 9x24 10 Ply	\$280 00	
17 5Lx24 8 Ply	\$240 00	
16 9x28 8 Ply	\$260 00	
18 4x28 10 Ply	\$340 00	
20 5x25 12 Ply	\$340 00	
23 5x25 16 Ply	Call For Quote	
1300x24 10 Ply	\$225 00	
1300x24 12 Ply	\$245 00	
1400x24 10 Ply	\$255 00	
1400x24 12 Ply	\$280 00	

### ARMSTRONG

FRONT TRACTOR Shipped UPS - No Charge!



★ 3-RIB ★		
400 12	\$22 00	
400 15	\$24 00	
400 19 4 Ply	\$29 00	
500 15	\$31 00	
550 16 4 Ply	\$33 00	
550 16 6 Ply	\$36 00	
600 14 6 Ply	\$52 00	
600 16 4 Ply	\$37 00	
600 16 6 Ply	\$41 00	
650 16 6 Ply	\$42 00	
75L 15 6 Ply	\$50 00	
750 16 8 Ply	\$54 00	
750 15 6 Ply	\$50 00	
750 18 6 Ply	\$64 00	
750 20 6 Ply	\$77 00	
9 5L 15 6 Ply	\$55 00	
9 5L 15 8 Ply	\$60 00	
10 00 16 6 Ply	\$80 00	
11Lx15 8 Ply	\$75 00	
1100 16 8 Ply	\$110 00	
4L 16 1 8 Ply	\$160 00	

★ 4-RIB ★		
11L 15 8 Ply	\$80 00	
10 00 16 6 Ply	\$80 00	
10 00 16 (TL) 6 Ply	\$95 00	
10 00 16 (TL) 8 Ply	\$106 00	
11 00 16 6 Ply	\$108 00	
11 00 16 (TL) 6 Ply	\$110 00	
11 00 16 8 Ply	\$108 00	
11 00 16 (TL) 8 Ply	\$123 00	
14L 16 1 (TL) 6 Ply	\$180 00	
14L 16 1 8 Ply	\$164 00	
16 5L 16 1 (TL) 8 Ply	\$250 00	

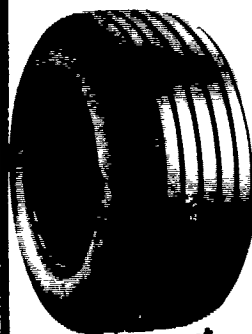
★ 5-RIB ★		
1100x16 12 Ply Tubetype	\$135 00	
1100x16 12 Ply Tubeless	\$150 00	

Small Rear Farm Tires



750x20 4 Ply	\$59 95
750x24 4 Ply	\$64 95
8 3x24 4 Ply	\$82 00
9 5x24 4 Ply	\$92 00
11 2x34 4 Ply	\$142 00
11 2x36 4 Ply	\$144 00
12 4x24 4 Ply	\$123 00
12 4x36 4 Ply	\$175 00
13 9x36 6 Ply	\$200 00

## WAGON TIRES



Special Discount \$5.00 OFF These Prices

26 1200x12 4 Ply	\$49 00
8 5x14 6 Ply	\$41 00
9 5Lx14 6 Ply	\$44 00
9 5Lx14 8 Ply	\$49 50
9 5Lx15 6 Ply	\$42 00
9 5Lx15 8 Ply	\$44 00
11Lx14 6 Ply	\$49 00
11Lx15 6 Ply	\$43 00
11Lx15 8 Ply	\$47 00
11Lx15 10 Ply	\$60 00
1000x15 8 Ply	\$60 00
11Lx15 8 Ply Tubeless	\$50 00
11Lx16 8 Ply	\$58 00
11Lx16 10 Ply Tubeless	\$74 00
12 5Lx15 10 Ply	\$75 00
12 5Lx16 14 Ply	\$85 00
12 5Lx15 12 Ply	\$87 00
14Lx16 1 12 Ply	\$140 00
16 5Lx16 1 10 Ply Tubeless	\$160 00
25x7 50x15 4 Ply Tubeless	\$44 00
25x7 50x15 6 Ply Tubeless	\$49 00
27x9 50x15 4 Ply Tubeless	\$53 00
27x9 50x15 6 Ply Tubeless	\$60 00
27x9 50x15 8 Ply Tubeless	\$65 00
31x13 50x15 6 Ply Tubeless	\$88 00
31x13 50x15 8 Ply Tubeless	\$99 00

### CONTRACTOR F-3

11Lx15 8 Ply	\$80 00
11Lx16 8 Ply	\$92 00
11Lx16 10 Ply	\$98 00
750 800x16 10 Ply	\$80 00
11Lx16 12 Ply	\$130 00
145 75 16 1 10 Ply	\$225 00

### 3 WHEELER TIRES

22x11 00 8	\$38 01
25x12 9	\$54 71
18x9 50 8	\$30 65



### ARMSTRONG

USED GRASS TIRES IN STOCK!

8 3x24	\$100 00
9 5x24	\$112 00
14 9x24 6 Ply	\$200 00
16 9x24 6 Ply	\$210 00
18 4x16 1 6 Ply	\$245 00
18 4x26 6 Ply	\$360 00
13 6x28 6 Ply	\$225 00

### SKID LOADER TIRES

570x12 4 Ply	\$40 00
23 850x12 4 Ply	\$47 00
27 850x15 4 Ply	\$51 00
27 850x15 6 Ply	\$65 00
27 1050x15 6 Ply	\$70 00
700x15 6 Ply	\$65 00
750x15 6 Ply	\$68 00
10 16 5 6 Ply	\$80 00
12 16 5 8 Ply	\$120 00
Steel Shield 10 16 5 6 Ply	\$95 00

Above Tires Shipped To You FREE

Route 230 West

# MUMMAU TIRE

Mt Joy, PA.

Serving Farmers In Penna. New Jersey Northern Maryland and Delaware

Out Of State 717-653-1260 In Penna. 1-800-222-1729