

New Wilmington Livestock Auction

New Wilmington, Pa.

Monday, May 11, 1987

Report Supplied by PDA

CATTLE 287...PDA. Compared with last Monday's market: Slaughter cows mostly \$1 higher. Few Choice sl. steers 66.50-66.75, few Good 64.50-65.50, few Standard 53.00-58, few Utility 48.75-52.00. Few Choice sl. heifers 63.00-69, one 72.00, few Good 56.50-58.50, few Standard 49-55.25. Breaking Utility & Commercial sl. cows 46.75-50, one 51.50, few yield grade 4-5, 44-46.75, Cutter & Bon. Utility 43.00-48, few high dressing 48-49.50, Canner & Low Cutter 37-43.50, Shells down to 31.00. Few Yield Grade No. 1, 1300-1940 lbs. sl. bulls 53.75-57.75, one No. 2 1575 lbs. 49.00. Feeder Cattle: Few Medium Frame No. 1, 415-635 lbs. steers 61.00-68, Med. & Large #1, 700-1035 lbs. 56-62.50. Few Medium Frame No. 1, 415-540 lbs.

heifers 58.50-63.50, few Medium #2, 390-650 lbs. 54.50-64.50. Few Medium 1, 315-385 lbs. bulls 74.00-85.50, Med. & Large #1, 445-650 lbs. 59-69.50, few 640-835 lbs. 52.50-55.00.

CALVES 236...Prime vealers, individual's 110.00, Choice 94.00-107, few Good 78.00-90, Standard and Good 90-135 lbs. 73.00-85, 65-85 lbs. 63.00-75, Utility 50-80 lbs. 49.00-58.00. Farm Calves: Holstein Bulls 90-130 lbs. 100.00-149, lot 85 lbs. 85.00; Holstein Heifers 90-120 lbs. 74.00-95.00. Beef Cross Bulls and Heifers 80-130 lbs. 75.00-92.50.

HOGS 418...Barrows and gilts \$2.50 to \$3 higher. US No. 1-3 215-265 lbs. 54.00-56, 2-3 215-285 lbs. 52.00-54.25, few 1-3 200-210 lbs. 50.00-52.00. Sows \$1.50 higher. US No. 1-3 330-595 lbs. sows 44.50-49.50 Boars 36.50-43.00.

FEEDER PIGS 8...Few US No. 1-3 40-55 lbs. feeder pigs 40.00-59.00 — all per head.

SHEEP 165...High Choice and Prime 70-90 lbs. spring lambs

95.00-106, few 115-120 lbs. 85.00-90, Choice 60-90 lbs. 85.00-98, Good and Choice 35-75 lbs. feeder lambs 75.00-85.00. Slaughter ewes 8.00-22.00.

GOATS 15...Medium & Large 15.00-31.00, Kids 11.00-20.00 — all per head.

Mercer Livestock Auction

Mercer, Pa.

Tuesday, May 12, 1987

Report Supplied by PDA

CATTLE 345...PDA...Compared with last Tuesday's market: Slaughter Steers \$3 to \$4 higher; Cows \$1 higher. High Choice & Prime sl. steers 75-77.40, few 78.00, Choice 67.50-75, Good 63.00-69, Standard 55-62.50. Few Choice sl. heifers 65-69.25, one 71.00, few yield grade #4, 61.00-65, few Good 59.25-63.50, few Standard 54.50-59.50, couple Utility 46.00&47.00. Breaking Utility & Commercial sl. cows 47.00-51, couple 52.00&52.85, Cutter & Boning Utility 44-47.50, Canner & Low Cutter 37-44.50. Yield Grade No. 1, 1060-1865 lbs. sl. bulls 55.00-60, one 2425 lbs. 62.00.

No. 2, 990-1225 lbs. 49-53.50. Feeder Cattle: Few Medium Frame No. 1, 405-575 lbs. steers 62.00-71, Med. & Large #1, 615-875 lbs. 57.00-67.00. Medium Frame No. 1, 350-650 lbs. heifers 57.00-66, Med. & Large #1, 700-900 lbs. 45.00-55.25. Medium & Large Frame No. 1, 600-895 lbs. bulls 50.00-58.00.

CALVES 86...Choice, individual vealers 89.00&90, few Good 80.00-86, Standard and Good 90-120 lbs. 80.00-89, 60-85 lbs. 61.00-79, Utility 50-135 lbs. 53.00-60.00. Farm Calves: Holstein Bulls 90-130 lbs. 100.00-150, mostly 120.00-145; Holstein Heifers 85-115 lbs. 80.00-90.00. Beef cross bulls & heifers 80-120 lbs. 86.00-110.00.

HOGS 177...Barrows and gilts \$3 higher. US No. 1-2 225-250 lbs. 55.00-56, two lots 57.77 and one lot 58.00, 1-3 215-260 lbs. 53.60-55, one lot 205 lbs. 51.75, 2-3 250-265 lbs. 50.50-53.10. US No. 1-3 275-575 lbs. sows 43.00-47, 2-3 330-400 lbs. 36.00-41.00. Few Boars 37.00-47.00.

FEEDER PIGS 21...US No. 1-3 35-45 lbs. feeder pigs 45.00-49.00, lot Utility 15 lbs. 22.00 — all per head.

SHEEP 3...Two Good 28 lbs. spring sl. lambs 90.00.

GOATS 8...Kids 10.00-18.00 — per head.

Keister's Middleburg Livestock

Middleburg, Pa.

Tuesday, May 12, 1987

Report Supplied by PDA

CATTLE 434...PDA...Compared with last week's market: Slaughter steers strong to \$1 higher; Cows about steady. High Choice & Prime sl. steers 74.50-76.50, Choice 1000-1400 lbs. 69.00-74, High Good and Low Choice 68.00-71, Good 64.00-69, Choice holsteins 60.50-63, few 66.00, Good 56.50-60.50, few Standard 52.00-58.00. Choice sl. heifers 65.00-71.50, few 74.00, few Good 58.00-63.00. Breaking Utility & Commercial sl. cows 46-51.75, few 52.85, Cutter & Boning Utility 44-49.50, Canner & Low Cutter 39-43.50, Shells down to 37.00. Few Good and Choice sl. bullocks 55.00-58.85. Yield Grade No. 1, 1150-2000 lbs. sl. bulls 52.00-58.50, one 63.00. Feeder Cattle: Few Medium Frame No. 2, 300-600 lbs. steers

and bulls 64.00-73.00.

CALVES 118...Few Prime vealers 104.00-109, few Choice 87.00-103, few Good 81.00-85, few Standard and Good 100-110 lbs. 90.00-96, 75-95 lbs. 80.00-89, few Utility 60-80 lbs. 65.00-75.00. Farm Calves: Holstein Bulls 90-125 lbs. 90.00-144, mostly 100.00-130; Holstein Heifers 85-120 lbs. 85.00-95.00.

HOGS 494...Barrows and gilts \$1 higher. US No. 1, 215-235 lbs. 57.50-58.50, 1-2 210-240 lbs. 56-57.50, 2-3 200-250 lbs. 55.00-56, 2-4 200-270 lbs. 53.00-55.00. US No. 1-3 280-650 lbs. sows 45.00-48.50, few 50.50, 2-3 300-550 lbs. 38.75-45.00. Boars 38.75-41.00.

FEEDER PIGS 337...US No. 1-3 30-45 lbs. feeder pigs 45.00-50, 50-65 lbs. 56.00-66.00 — all per head.

SHEEP 35...Few Choice 45-55 lbs. spring sl. lambs 108.00-122.00, 80-105 lbs. 85.00-101.00. Slaughter ewes 23.00-35.00.

GOATS 10...Few Large 27.00-68.00 — per head.

Omaha Cattle

Thursday, May 14, 1987

SLAUGHTER STEERS AND HEIFERS CLOSED 50 HIGHER THIS WEEK PRICES ADVANCES SLIGHTLY FOR FIRST TWO DAYS, THEN WEAKENED TO LOSE PART OF THE EARLY ADVANCES BUYER DEMAND CONTINUES GOOD BUT AT MIDWEEK, SLUGGISHNESS NOTED IN WHOLESALE BEEF CHANNELS AND BUYERS TURNED SOMEWHAT BEARISH SLAUGHTER COWS CLOSED FIRM TO 200 HIGHER FOR THE WEEK SLAUGHTER BULLS STEADY

ESTIMATED 5 DAY RECEIPTS 6,900, ACTUALS LAST WEEK 6,591. YEAR AGO 8,911 STEERS COMPRISED 57% OF THE WEEK'S RECEIPTS. HEIFERS 35%, COWS 6% FEEDERS NONE

SLAUGHTER CLASSES STEERS (CLOSING SALES) CHOICE 2-4 1100-1350 LBS 71 50-73 00, LOAD 73 25, LOAD 74 00

GOOD AND CHOICE 2-3 1050-1250 LBS 70 00-72 00 GOOD 67 50-70 00

HEIFERS (CLOSING SALES) CHOICE 2-4 975-1150 LBS 70 00-71 00, 2 LOADS 71 50-71 75, LOAD 72 25 GOOD AND CHOICE 2-3 950-1050 LBS 68 00-70 00 GOOD 66 00-68 00

AVERAGE OF LS 214 DETAILED PRICE QUOTATIONS FOR CHOICE 900-1100 LB STEERS THIS WEEK \$71 17, 1100-1300 LBS \$72 50 AVERAGE COST OF ALL SLAUGHTER STEERS THIS WEEK \$71 01. AVERAGE WEIGHT 1196 LBS AS COMPARED TO \$69 34 AND 1210 LBS A WEEK AGO AVERAGE COST HEIFERS \$69 89. AVERAGE WEIGHT 1055 LBS AS COMPARED \$67 52 AND 1050 LBS A WEEK AGO

COWS (CLOSING SALES) CUTT. UTIL. COMM 23 BULK HI DRESS % LOW DRESS % BREAKING 43 00-47 00 48 00 BONING 42 00-47 00 48 00-49 00 CANNER AND CUTTER 40 00-44 00 36 00-40 00

BULLS (CLOSING SALES) BULK HI DRESS % LOW DRESS % YG 12 1500-2000 LBS 51 00-54 50 47 00-50 00

31 DAY KEYWIND

C-243 Wall or Mantle, 31-day hour and half-hour strike clock. Hardwood cabinet; full front glass door, pendulum, decorated glass, black numbers and hands. Walnut finish, brass trim. Size is 21"x11"x5". One Year Guarantee. Retail \$99.00

Special Sale! \$59.95!!



ICE CREAM FREEZERS
Stainless Steel Cans!
(5 Year Warranty)

| | | | |
|-------------|--------------|-------------|--------------|
| 2 Qt. Hand. | \$47.84 ppd | 4 Qt. Hand. | \$58.55 ppd. |
| 6 Qt. Hand | \$68.63 ppd. | 8 Qt. Hand | \$118.74 ppd |
| 10 Qt Hand | \$139.77 ppd | 2 Qt. Elec | \$64.57 ppd. |
| 4 Qt. Elec. | \$90.48 ppd. | 6 Qt. Elec | \$99.63 ppd |

ALL PRICES ARE PREPAID!

We have complete line of CLOCK movements, numbers, dials and resin for clockmakers. Write or call.

Andy H. Weaver



Box 109F - W. Farmington, Ohio 44491
ALL ITEMS POSTPAID - PROMPT SHIPMENTS
Phone (216) 548-8799
TOLL FREE 1-800-882-8799 (OUTSIDE OHIO)

Is Your Property Immune From Attack?

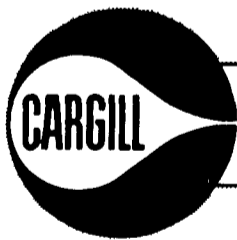
Termites? Ehrlich in. Termites out



1278 Loop Rd.
Lancaster, Pa.
17604
717-397-3721

Since 1928
Pest control is too important to trust to anyone else

CALL US



CARGILL, INC.

To Buy And Sell

- CASH GRAINS •
- FEED INGREDIENTS •
- PIK CERTIFICATES •

Toll Free In PA 1-800-822-0769
or Local 717-426-1961

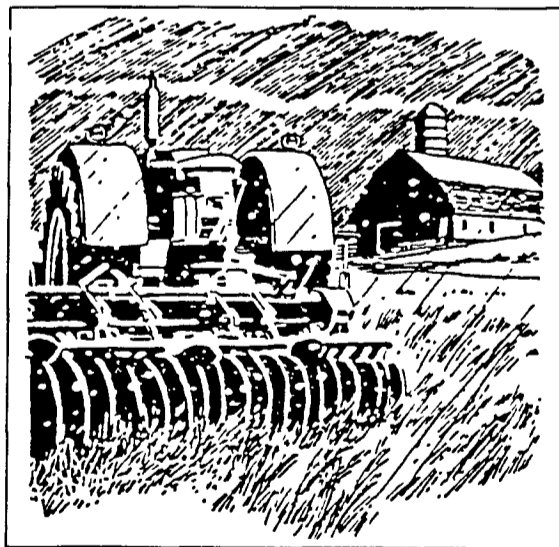
CARGILL, INC.



Serving American Agriculture For Over 100 Years

FARMERS

Are you growing TOBACCO, TOMATOES, MELONS, VEGETABLES AND OTHER CROPS?

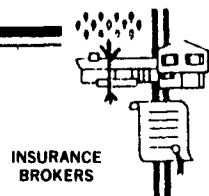


HAIL STORMS ARE COMING RUN FOR COVER!

Protect Yourself With Hail Insurance

Hail damage to Crops can be devastating! Our coverage can start immediately and will pay for damage AT TIME OF LOSS. Our farm policies are designed to fit YOUR needs.

For courteous service from people familiar with hail protection call Roger Slusher at:



JACOB H. RUHL, INC.

26-28 Market Square Manheim, PA 17545

Phone: 717-665-2283

Home: 717-653-1147

Full Service Farm Insurers