

Philadelphia Vegetables

Thursday, May 14, 1987

ASPARAGUS ABOUT STEADY CALIF 30-lb crt & ctn wide range in qual & price jbo 18 00 fair cond 10 00 lge 15 00-18 00 Long Green lge 15 00 few 16 00 WASH 30-lb crt WAExFcy 8-9" cut lge 19 00-21 00 NJ pyramid crt field run bchd 12s med-lge few 16 00 MD 1-1/9 buctn field run loose few 12 00 some low as 10 00
 BEANS-FAVA CALIF 25-lb crt 12 00-14 00
 BEANS-GREEN SLIGHTLY LOWER FLA various bu containers Round Green type 16 00-18 00 mos 18 00 Handpckd 20 00-22 00 few 18 00 occ hgr
 BEETS TEX ctn bchd 12s 6 50 25-lb film bags topped 4 50
 BROCCOLI ABOUT STEADY CALIF ctn bchd 14s 7 00-8 00 few 6 50 18s 7 50-8 50 mos 7 50 few 7 00 one label 9 00 ord cond 2 00-3 00
 CABBAGE ABOUT STEADY 1-3/4 buctn & crt medium Green unless otherwise stated FLA 7 50-8 00 mos 8 00 Savoy poor-fair cond 2 00-5 00 TEX 7 00 some hgr GA 7 50-8 00 NETHERLANDS 50-lb sks 11 00
 CARROTS SUPPLIES LIGHT 48 1 lb film bags in film sacks CALIF med-lge few 8 50-9 00 FLA med few 7 00-8 00 mos 7 50-8 00 50-lb sacks loose jumbo FLA few 12 00 ctn bchd 24s CALIF 10 50
 CAULIFLOWER ABOUT STEADY ctn film wrpd CALIF 9s 9 50-10 00 mos 10 00 12s 10 00-12 00 mos 12 00 FLA 12s 9 00-10 00
 CELERY SUPPLIES LIGHT CALIF ctns 2 doz few 17
 3 doz few 16 00 FLA crt & ctn 2 doz 13 00 2 1/2 doz 11 00-13 00 mos 12 00-13 00 one lot high as

15 00 film wrpd 15 00 3 doz 13 00-13 50 4 doz 12 00-12 50 hgr Hearts film wrpd 24s 12 00
 CHINESE CABBAGE FLA calery crt 14 00 CALIF Nappa 50-lb ctn few 14 00 30-lb ctn 7 00-8 00 Bok Choy 30-lb 7 00-8 00
 CORN ABOUT STEADY FLA wirebound crt approx 4-1/2 doz Yellow 8-8 50 few 7 00 White 7 00-8 50 mos 8-8 50 few 9 00
 CUCUMBERS 1-1/9 buctn Waxed med unless otherwise stated FLA 20 00-22 00 mos 20 00 fair appear 18 00 fair qual 15 00-17 00 mos 16 00 ord qual 12 00-14 00 lge 9 00-10 00 fair cond 5 00
 EGGLANT SUPPLIES LIGHT FLA bu & 1-1/9 buctn fair qual few 5 00-6 00 Italian type 10 00
 ENDIVE ABOUT STEADY FLA 1-1/9 buct 7 00-8 00 mos 7 00 few 6 00 CALIF ctn 24s 9 50
 ESCAROLE ABOUT STEADY FLA 1-1/9 buct 5 50-7 00 mos 6 00
 GREENS crates approximately 1 1/2 bu bchd unless otherwise stated NJ Mustard & Turnip Tops 5 50-7 00 mos 6 00 Collards 8 50 Broccoli Rabe few 6 00 Dandelion 16s few 6 00 NC Kale 7 50 fair cond Mustard, Turnip Tops & Rape 6 00 GA Collards 7 00-8 00 mos 8 00 TEX Collards 7 00-8 00
 LEEKS ABOUT STEADY NJ crt bchd 12s 6 00 few 6 50-7 00 CALIF ctn bchd 12s few 8 00
 LETTUCE ICEBERG ABOUT STEADY ctn 24s unless otherwise stated CALIF 7 00-8 50 few 9 00 fair cond 5 50-6 00 poor-ord cond 2 00-4 00 film wrpd fair cond 8 00 poor cond 2 00-4 00 ctn 30s poor cond 2 00-4 00 ROMAINE ABOUT STEADY CALIF 24s ctn 7 00-9 00 crt 10 00-11 50 FLA ctn 24s 4 00-6 00 BIG BOSTON CALIF ctn 24s 7 00 FLA crt 24s 6 00 BIBB FLA ctn 24s 6 00 NJ sml crt 24s few 4 00 LEAF CALIF ctn 24s including Red 7 00-9 00 mos 8 00 poor cond 1 00-2 00 FLA crt 24s 6 00

OKRA SUPPLIES INSUFFICIENT TO QUOTE
 ONIONS-GREEN ABOUT STEADY NJ crt bchd 36s 6-6 50 CALIF ctn bchd 48s 6-6 50 MEXICO ctn bchd 48s 6 00-7 00 few 7 50
 PARSLEY STEADY bunched 5 dozen Curly unless otherwise stated FLA crt Plain few 9 00 TEX ctn 8 00 NJ bubkts 6 00-7 00 CALIF ctn 8 50
 PEAS-GREEN CALIF buctns few 16 00
 PEAS-SOUTHERN NO SUPPLIES
 PEAS-SUGAR ABOUT STEADY 10-lb crts & ctns per lb CALIF including via air 80-1 00 mos 90 cents Sugar Snaps ord cond 50 cents GUATEMALA 1 10-1 20
 PEPPERS ABOUT STEADY 1 1/9 buctns & ctns Calif Wonder type Green unless otherwise stated FLA med-lge/lge 12 00-15 00 mos 12 00-14 00 med 8 00-10 00 sml-med 7 00-8 00 sml 5 00-7 00 very sml 4 00-5 00 Mixed Red med/med-lge 6 00-7 00 mos 7 00 sml 4 00-5 00 Yellow med lge 25 00 NETHERLANDS 5 kilo ctn Red & Yellow lge 30 00 Orange lge 43 00
 RADISHES ABOUT STEADY FLA ctns Red 30-6 oz film bags 3 50-4 00 few 3 00 14-1 lb film bags 3 50-4 00 mos 4 00 NJ 4/5 buctns Red bchd 36s 6 00-7 00 mos 7 00 PA 4/5 buctns Red bchd 36s 6 00 CALIF ctn Red bchd 24s few 5 00 MEXICO ctn Red bchd 24s few 6 00
 RHUBARB WASH 20-lb ctn ExFcy 10 00
 SPINACH ABOUT STEADY Savoy type NJ bubkt 4 00-5 00 fair cond 3 00 PA 1 1/4 buct few 3 3 50 flat type CALIF ctn bchd 24s 7 00
 SQUASH ABOUT STEADY FLA 1/2 & 5/9 buctns & ctns Zucchini sml-med 5 00-7 00 mos 6 00 med 4 00-5 00 mos 4 00 Yellow Straightneck sml-med very few 16 00 med 10 00-12 00 one lot very few 14 00
 SWEET POTATOES ABOUT STEADY 50-lb ctn Jewel type cured NC 16 00 one label 18 00 ord

qual 8 50-9 00 lge 13 00
 TOMATOES HIGHER 25-lb ctn Pink to Light Red 85% US#1 or better unless otherwise stated SALES BY REPACKERS FLA 5x6s 11 50 6x6s 10 50 SALES BY OTHERS FLA 5x6s 12 00-14 00 6x6s 11 00-12 00 6x7s 10 00 PLUM TYPE MEXICO lugs 12 00 CHERRY TYPE 12-1 pint flats MEXICO one label 15 00 fair cond 4 00-5 00
 TURNIPS FLA topped 25-lb film bags med 7 00 CALIF topped 25-lb film bags med 7 50
 RADISHES ABOUT STEADY carton Red 30-6 ounce film bags FL 4-450*
 SPINACH ABOUT STEADY Savoy type TX bushel baskets 700-800 carton bunched 24s 9-950 flat type CA carton bunched 24s 800*
 SQUASH SUPPLIES LIGHT FL 1/2 bushel carton Zucchini & Yellow Straightneck Supplies insufficient to quote MEXICO lugs Zucchini small-medium one lot 10 00-12 00 medium one lot 600-700*
 SWEET POTATOES 50-lb carton Jewel type cured NC 13 00-14 00*
 TOMATOES ABOUT STEADY 25-lb cartons Pink to Light Red US combination grade or better unless otherwise stated Sales by Repackers FL one lot 5x6s 11 00 6x6s 900 Sales by Others FL 5x6s 11 00 6x6s 700-800 fair quality 5x6s few 10 00 6x6s 650-700 MEXICO 2-layer flat 4x5s 900 5x5s 700-800 5x6s 600-700 3-layer lugs 6x6s 700 Cherry Type 12 1 pint flats MEXICO 900*
 TURNIPS topped NJ 25-lb mesh sacks medium 450*

GOATS 27...Large Adults 33.00-48.00, one 53.00, Large Kids 22.00-35.00, few Small Kids 15.00-21.00 — all per head.

Carlisle Livestock

Carlisle, Pa.
 Tuesday, May 12, 1987

Report Supplied by Auction
CATTLE: Steers: Active! 2.00 higher. Choice 2&3's 68.50-71.10; Good 64.00-68.00; Medium 61.25-63.50. Holsteins 1.00 higher. Choice 60.00-64.00; Good 56.75-59.50; Medium 55.00 & Down.
HEIFERS: Active. Choice None offered; Good 58.00-64.75; Medium 55.00 & Down. Cows: Strong Demand! 2.00 higher. High Yield 49.00-51.00; Good 46.25-48.85; Medium 44.50-46.00; Big Middle 42.00-48.00; Fatty Herf. Couple Shelly 41.50 & down. Fat Bulls mostly steady; Medium-Good 52.00-56.75.

Leesport Livestock Auction

Leesport, Pa.

Wednesday, May 13, 1987

Report Supplied by PDA

CATTLE 300...PDA... Supply included 38 head feeder cattle. Compared to last Wednesday's market: Slaughter steers unevenly steady; Cows .50 to \$1 higher. Few High Choice & Prime 1100-1500 lbs. sl. steers 72.50-75, Choice 950-1335 lbs. 62.75-71, few 73.50, Good 62.00-68, Good & Choice 1200-1600 lbs. holsteins 57.25-63.25, few Standard 56.00-61.00. Choice 950-1135 lbs. sl. heifers 61.00-67, Prime, one 70.50, Good 54-60.10, few Standard 50-55.25, few Utility 43.50-46.50. Breaking Utility and Commercial sl. cows 47.50-51, few 55.75, Cutter & Bon. Utility 44.25-48.75, few 49.75, Canner & Low Cutter 40.25-44, Shells down to 35.00. Good & Choice sl. bullocks 55.25-63.75, few 69.25, few Standard 54.50-56.75. Few Yield Grade No. 1, 1500-1800 lbs. sl. bulls 54.00-60, couple No. 2, 900&965 lbs. 48&50.75. Feeder Cattle: Lot Medium Frame No. 1, 630 lbs. steers 69.50, few Large #2, 430-600 lbs. 63.00-65.00. Few Medium Frame No. 1, 300-485 lbs. heifers 65.00-72.00. Few Large Frame No. 1, 430-800 lbs. bulls 54.00-60.00.

CALVES 106... Few Choice vealers 88.00-102, individual Prime 107.00, few Standard and Good 85-110 lbs. 65.00-79, few 75-85 lbs. 59.00-65.00. Farm Calves: Holstein Bulls 90-140 lbs. 118.00-136, few down to 85.00, few Hols. Heifers 85-105 lbs. 87.00-92.00. Few Beef cross bulls & heifers 70-115 lbs. 70.00-115.00.

HOGS 363... Barrows and Gilts steady to .75 lower. US No. 1-2 200-240 lbs. 55.50-56, lot 56.50, 1-3 205-255 lbs. 53.75-55.50, few 56.00, few 190-200 lbs. 49.85-50, lot 53.00, 2-3 215-265 lbs. 53.10-54.25, lot 265 lbs. 51.65, few 1-3 165-180 lbs. 45.50-50.50. Sows steady to \$1 higher. US No. 1-3 300-500 lbs. sows 43.00-46, 500-685 lbs. 46-47.75, few Medium 300-420 lbs. 35.00-42.75. Few Boars 35.00-37.00.

FEEDER PIGS 209... Two Lots US No. 1-3 25 lbs. feeder pigs 145.00&165, 30-40 lbs. 125.00-132.50, 40-60 lbs. 105.00-117, few 60-75 lbs. 94.00-104.00 — all per hundredweight.

SHEEP 68... Choice 45-60 lbs. spring sl. lambs 100.00-110, 40-65 lbs. 85.00-96, few 70-80 lbs. 95.00; Good & Choice 25-35 lbs. 112.50-127.50. Few Slaughter sheep 25.00-32.00.

Westminster Livestock

Small Animals, Eggs, Produce
 Tuesday, May 12, 1987
 All Prices Per Head

Crates Sold 164.
DUCKS: Large Drakes 5.00-8.00; Hens 4.00-5.00; Ducklings 1.25-2.50.
GEESE: 10.00; Goslings 3.25.
GUINEAS: Pigeons 2.00; Doves 6.50.
CHICKENS: Heavy Hens 2.50-3.25; Peeps .60-1.70.
RABBITS: Large 4.00-6.00; Fryers 3.00-4.75; Small 1.85-3.00; Bred Does 6.00-7.50; Angoras 9.00-11.00.
 Eggs 1185 doz. All Prices Per Dozen.
 Jumbo Brown .50-.70; Extra Large Brown .35-.46; Large Brown .25-.35. Medium Brown .14-.20; Small Brown .16.
 Extra Large White .30-.39; Large White .15-.25; Medium White .12-.17; Small White .14.

DO YOU WANT MORE FARM INCOME?



WE NEED SEVERAL NEW 1000 & 2000 HEAD FINISHING FLOORS

WE PROVIDE

- A Strong Long-Term Contract
- Our Own Hi-Bred Feeder Pigs
- Weekly Service
- New Concept In Hog Finishing
- Building Design (Within a 70 Mile Radius of Lancaster, PA)

WE ARE LOOKING FOR YOU
 Call Today Ask For Brent 8:00 - 5:00

Swine Production

HERSHEY SERVICES

(717) 653-8783
 1-800-544-4574

R.D. #1, Box 139
 Marietta, PA 17547



Fine Quality Feeds

Esbenshade Mills

RD 3, BOX 345, MT JOY, PA 17552

ATTENTION PRODUCE BUYERS!

Shippensburg Produce Auction will be open for sales

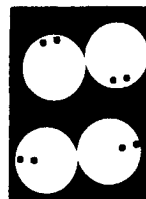
May 26, 1987 at 11:00 a.m.

Will be open EVERY Tuesday, Thursday, and Saturday there after until further notice. All Produce Growers & Buyers Are Welcome!

SHIPPENSBURG PRODUCE AUCTION

1 mile North of Shippensburg on US Rt. 11

Weekday Hours: 8 a.m. to 8 p.m.
 Saturday Hours: 8 a.m. to 5 p.m.
 Closed Sundays
 717-530-1700



POOL PUMP SALE

See EECO Ad Pg. C-34