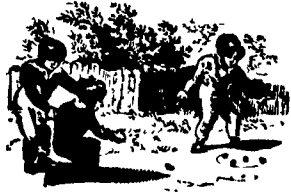


# THE OLD FARMER'S ALMANAC

MAY 11-17, 1987  
April showers overslept.

Full moon May 13 (Wed) Artist Salvador Dali born May 11, 1904 Average length of days for the week 14 hours, 34 minutes Cape Cod was discovered by Bartholomew Gosnold of England May 15, 1602 In a speech to the House of Commons on May 13, 1940, Churchill said 'I have nothing to offer but blood, toil, tears and sweat' The first nylon stockings were sold in America May 15, 1940 To take revenge is often to sacrifice oneself



Ask the Old Farmer: Something I and many other women drivers need is a protection from marking the back heels of one's shoes while driving. Any suggestions? L.K., Stamford, Conn.

Why not glue a square of rug in front of the pedal? Be sure to have it go under the pedal far enough so your heel won't catch on the front edges.

Home Hints: Use the high pressure hose at a self serve car wash to clean dirty window screens.

## OLD FARMER'S WEATHER FORECAST

New England: Beginning of week rainy with reasonable temperatures, mid through end of week rain north, showers south, with warm temperatures  
Greater New York-New Jersey: Beginning of week showers with seasonable temperatures, sunny and very warm mid through end of week  
Middle Atlantic Coastal: Week begins with thunderstorms and cool temperatures, sunny with very warm temperatures mid through end of week

(All Rights Reserved Yankee Publishing Incorporated, Dublin NH 03444)

## Eighty-Four Livestock Auction

Eighty-Four, Pa.  
Monday, May 4, 1987

Report Supplied by PDA

CATTLE 233...PDA...Compared with last Monday's market: Slaughter cows .50 to \$1 lower. Good sl. steers 57.75-63.50, few Standard 49.00-54, Utility 45-48.50. Few Choice sl. heifers 63-65.75, few Good 55-60.50, Standard 47.50-53, Utility 44.50-48.00. Breaking Utility & Commercial sl. cows 45.00-48.50, Cutter & Bon. Utility 41.00-46, Canner & Low Cutter 36.50-41.50, Shells down to 32.00. Choice sl. bullock, one at 58.50. Yield Grade No. 1, 1100-2250 lbs. sl. bulls 51.00-61, one 64.75, No. 2, 900-1500 lbs. 46.00-50.00. Feeder Cattle: Medium & Large Frame No. 1, 280-550 lbs. steers 73.00-82, 600-900 lbs. 60.00-73.25. Medium Frame No. 1, 300-500 lbs. heifers 65.00-75.00. Medium Frame No. 1, 400-600 lbs. bulls 67.00-78, No. 2, 500-650 lbs. 55.00-60.00.

CALVES 173...Choice vealers 93.00-97.50, Good 79.00-90, Standard and Good 90-120 lbs. 62.00-69, 60-85 lbs. 51.00-63, few Utility 60-85 lbs. 35.00-43.00. Farm Calves: Holstein

bulls 90-125 lbs. 80.00-120.00, Holstein Heifers 85-115 lbs. 75.00-105.00.

HOGS 53...Barrows and gilts \$2.50 to \$3 higher. Lot US No. 1-2 240 lbs. 54.75, 1-3 202-230 lbs. 52.00-53.25, lot 1-3 195 lbs. 51.00. US No. 1-3 300-600 lbs. sows 42.00-45.50, 2-3 400-625 lbs. 37.00-42.50. Few Boars 30.00-35.00.

FEEDER PIGS 10...Few US No. 1-3 32 lbs. feeder pigs 30.00, few 40-60 lbs. 40.00-42.00 — all per head.

SHEEP 180...Spring slaughter lambs fully steady. High Choice & Prime 55-70 lbs. spring sl. lambs 109.00-121, 80-90 lbs. 102.00-108, 95-110 lbs. 95.00-104, lot Choice 70 lbs. at 99.00, few 30-40 lbs. 110.00-125, lot Good 34 lbs. at 75.00. Slaughter ewes 20.00-33.00.

GOATS 40...Large 30.00-58.00, Medium 19.00-25.00, Kids 10.00-16.00 — all per head.

## New Wilmington Livestock Auction

New Wilmington, Pa.

Monday, May 4, 1987

Report Supplied by PDA

CATTLE 277...PDA. Compared with last Monday's market: Slaughter cows \$1.50 higher. Few

Choice sl. steers 64.50-68.25, few Good 58.75-63 few Standard 50-57.50. Few Choice sl. heifers 65.25-67, few Holsteins 54.75-58, Good 55-58.75, Standard 48-53.50. Breaking Utility & Commercial sl. cows 46.00-50, Cutter & Bon. Utility 41.50-47, Canner & Low Cutter 35.00-42, Shells down to 31.00. Utility sl. bullocks 44.25-48.00. Few Yield Grade No. 1, 1520-1795 lbs. sl. bulls 52-54.75, few No. 2 1290-1435 lbs. 48.50-50. Feeder Cattle: Medium Frame No. 1, 550-810 lbs. steers 61.00-69.50, 815-935 lbs. 51.75-57.00. Medium Frame No. 1, 550-725 lbs. heifers 54.00-60, few Med. & Large #2, 315-620 lbs. 50.00-56.00. Few Medium 1, 530-700 lbs. bulls 55.50-65, Medium #2, 550-865 lbs. 46.50-54.00.

CALVES 228...Prime vealers, individual's 109.00&114, Choice 85.00-100, few Good 75.00-85, Standard and Good 90-120 lbs. 67.50-77.50, 65-85 lbs. 57.00-68, lot Utility 55 lbs. 53.00. Farm Calves: Holstein Bulls 90-130 lbs. mostly 100.00-151, some down to 85.00, Holstein Heifers 85-120 lbs. 67.50-102.50. Beef Cross Bulls and Heifers 70-125 lbs. 67.50-85.00.

HOGS 478...Barrows and gilts about steady. US No. 1-2 230-245 lbs. 52.50-53.25, (one small lot 54.50), 1-3 220-265 lbs. 51.50-53, 2-3 220-275 lbs. 50.75-51.50, 1-3 165-210 lbs. 44.75-49.00. Sows mostly \$1 higher. US No. 1-3 340-590 lbs. sows 42.75-48, few 2-3 330-525 lbs. 37.50-40.00. Boars 36.00-43.00.

FEEDER PIGS 19...Few US No.

1-3 20-30 lbs. feeder pigs 23.00-31.00, few 40-50 lbs. 36.00-40.00 — all per head.

SHEEP 106...Choice and Prime 65-85 lbs. spring lambs 96.00-109.00, one small lot 122.00, 85-110 lbs. 90.00-106.00. Yearlings 40.00-65.00, Slaughter ewes 15.00-26.00.

GOATS 23...15.00-29.00 — all per head.

## Valley Livestock

Athens, Pa.

Monday, May 4, 1987

Report supplied by auction  
Holstein Hfr. Calves 85.00-127.50.  
Veal Calves 65.00-92.00.  
Vealer Bull Calves 100.00-134.00.  
Slaughter Calves 60.00-70.00.  
Grassers & Feeders 45.00-66.00.  
Lambs 60.00-110.00.  
Sheep 18.00-36.00.  
Hogs, 200 to 250 35.00-52.00.  
Sows 35.00-47.00.  
Boars 35.00-40.50.  
Pigs, each 25.00-50.00.  
Heifers 42.00-53.00.  
Steers 40.00-55.00.  
Steers, feeder 50.00-60.50.  
Bulls 45.00-58.00.  
Cows, utility 44.00-49.00.  
Cows, fat 43.00-47.00.  
Cows, medium 42.00-46.00.  
Cows, poor or small 32.00-40.00.  
Calf Market real good.  
Calf Market higher.  
Horses each to 380.00.  
Ponies each to 85.00.  
Goats each to 59.00.  
Remarks: Real good prices on all livestock.  
Feeder Sale 1st Monday of Each

Month.

Dairy Sale 3rd Thursday of Each Month.

## Grantsville Livestock

Grantsville, Maryland

Saturday, May 2, 1987

Large: 35-42; Medium: 30-35.

HOGS: Top Barrows & Gilts 52.00-53.50; Heavy Butcher 50.00-53.00; Light Butcher 42.00-52.00; Butcher Sows 30.00-46.00; Feeder Shoats 24.00-45.00.

VEAL: Good 75.00-98.00; Standard 60.00-70.00; Utility 40.00-55.00; Bull 70.00-119.00.

SHEEP & LAMBS: Choice 90.00-105.00; Good 70.00-80.00; Utility 58.00-64.00; Slaughter Ewes 18.00-25.00.

SLAUGHTER CATTLE: Steers: Good 64.00-70.00; Standard 60.00-62.00; Utility 48.00-55.00.

HEIFERS: Good 58.00-62.00; Standard 50.00-54.00; Utility 42.00-48.00.

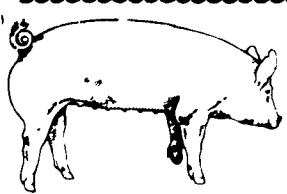
COWS: Commercial 42.00-50.00; Utility 38.00-40.00; Canner & Cutter 32.00-37.00.

BULLS: Commercial & Good 52.00-57.00; Cutter & Utility 42.00-49.00.

STOCK-FEEDER CATTLE: Yearling Steers: Good 64.00-72.00; Medium 60.00-62.50; Inferior & Common 50.00-58.00.

STEER CALVES: Good 75.00-85.00; Medium 62.00-70.00; Inferior & Common 54.00-60.00.

HEIFER CALVES: Good 64.00-71.00; Medium 55.00-60.00; Inferior & Common 45.00-52.00.



## EMERY'S BUYING STATION

### OPEN TO RECEIVE YOUR MARKET HOGS

AT THE GREEN DRAGON MARKET  
RD 4, EPHRATA, PA 17522  
1 MILE NORTH OF EPHRATA  
ON NORTH STATE STREET.

HOURS: MONDAY, TUESDAY, and WEDNESDAY 7:00 A.M. to 11:30 A.M.  
215-458-5677 Residence  
717-733-9648 Office

215-458-5677 Residence  
717-733-9648 Office

### YOU ARE PAID FOR YOUR HOGS IMMEDIATELY

Ken & Lois Emery, Proprietors



## ATTENTION FARMERS

EVERY MONDAY  
HATFIELD PACKING CO. and  
MOYER PACKING CO.

Will Receive Your  
Hogs and Cattle at the  
DANVILLE LIVESTOCK MARKET  
RD 4, Danville, PA

- We will receive your hogs from 8 AM to 12 Noon every Monday Your hogs will be weighed and paid for immediately
- We will also accept your sows & boars
- Your cattle will be received from 12.30 to 5 P M We will either pay you for your cattle immediately or you may sell them dressed weight
- There will not be a commission or yardage fee deducted from your check.
- You may call our office Monday morning and we will be able to tell you the base price for hogs for the day.

MELVIN M. LEHMAN - Owner  
Danville Buying Station

Phone: 717-275-2880

## F & S OF VIRGINIA HAY AUCTION

NEW MARKET, VA

EVERY TUESDAY, AT 11:30 A.M.

Open to everyone to buy & sell.

Drought Stricken area in the heart of the Shenandoah Valley Horse Country, Dairy & Beef Cattle Country. 3% Commission will be charged to the sellers.

Auction will be conducted at the F & S Auto Auction, located on Rt. 11 North, 2 miles North of New Market, VA and 3 miles South of Mount Jackson, VA.

Our policy is cash, certified check or bank approved letter.

For more information call:  
703-740-8005 or 703-298-9187.

## FRIDAY, JUNE 5 ON THE FARM MONTHLY BRED GILT SALE

1:00 P.M.

Sale To Start Promptly Every 4 Weeks

Located 18 miles south of Lancaster, Pa., 6 miles south of Quarryville, take Rt. 272 to Little Britain, turn north, follow Little Britain Road to Jackson Road, right. 2nd farm, OR take Rt. 222, out of Quarryville to Cedar Hill Road to Little Britain Road to Jackson Road, left. Watch for sale arrows.

50 to 60 Head  
WHITE DIAMOND GILTS

Here Now a new cross again.  
Large White & Landrace, first generation true F-1 gilts.  
Parent stock originated from Lieske Bros. Minnesota. Very productive in litter size and feed conversion.

Vaccinated for Lepto, Erysipias, Rhinitis, E'Coll, Pasteurella

Hand mated with Breeding Dates

Local Truck Available  
No Hogs Sold On Commission

JOHN B. STOLTZFUS  
R.D. 1, Kirkwood, Pa.  
Abe Dffenbach, Auctioneer AU225L

NEXT SALE DATE JULY 3, 1:00 P.M.



I'M NOT LION...

The Classified Livestock Section Has Beastly Selections!

SEWAGE PUMP SALE

See EECO Ad Pg. C-34

## CATTLE - HOGS - SOYBEANS - CORN

\* Futures & Options  
Call For Information On Hedging & Trading  
\* Same location for 18 years.

## ROSENTHAL & COMPANY

2200 Hamilton St.  
Allentown, PA 18104

215-821-8111

PA 800-322-9274

All other areas 800-523-9388

## ATTENTION CATTLE FEEDERS

### SPECIAL GRADED SALE

Thursday, May 14  
11 AM

- 100 Head Acclimated Cattle From Somerset County, Weighing 700 to 800 Lbs.
- 250 Other Acclimated Cattle

Walter M. Dunlap and Sons

Lancaster Stockyards Tel. (717) 397-5136

An Old Line Commission Firm Keeping Abreast With The Times

