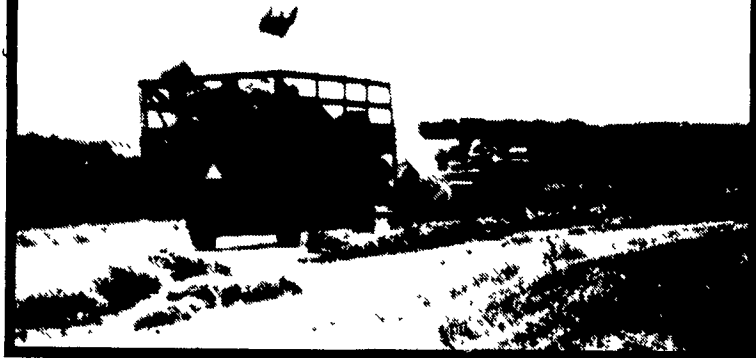


HAY MARKETS



Pa. Grain

Monday, May 4, 1987

Report supplied by PDA

COMPARED WITH LAST MONDAY'S MARKET FOR SOUTHEASTERN, CENTRAL AND SOUTH CENTRAL PA.: Corn and Wheat steady to .10 higher; Barley and Oats mostly steady; Ear Corn steady to strong; Soybeans steady to .20 higher.

Southeastern Pennsylvania

Corn No. 2-y range 1.60-2.00, average 1.81; *Contract for Harvest 1.80-1.99; @Wheat No. 2 range 2.40-3.44, mostly 2.90-3.05, average 2.95; *Contract for Harvest 2.70-2.99; Barley No. 3 range 1.40-1.60, average 1.52; *Contract for Harvest 1.10-1.15; Oats No. 2 range 1.55-1.80, average 1.73; *Contract for Harvest 1.00; Soybeans No. 1 range 4.80-5.35, average 5.10; *Contract for Harvest 5.00-5.20; *Gr. Sorghum #2 range 1.60, average 1.60; *+Buckwheat *Contract for Harvest 8.40; Ear Corn range 47.00-60.00, few reported 43.00, average 52.57.

Central Pennsylvania

Corn No. 2-y range 1.50-1.90,

average 1.70; @Wheat No. 2 range 2.60-3.10, few reported 2.40; average 2.71; Barley No. 3 range 1.20-1.45, average 1.37; Oats No. 2 range 1.45-1.70, average 1.57; Soybeans No. 1 range 5.00-5.40, few reported 4.40, average 5.01; Ear Corn range 45.00-55.00, average 49.60.

South Central Pennsylvania

Corn No. 2-y range 1.70-1.80, few reported 1.95, average 1.77; @Wheat No. 2 2.30-2.80, average 2.53; Barley No. 3 range 1.20-1.65, average 1.40; Oats No. 2 1.55-1.75, average 1.71; Ear Corn range 50.00-65.00, average 57.44.

Western Pennsylvania

Corn No. 2-y range 1.55-2.00, average 1.75; @Wheat No. 2 range 2.20-3.20, average 2.70; Oats No. 2 range 1.40-1.60, average 1.49; Ear Corn range 50.00-52.00, average 51.00.

Southeastern, Central & South Central Summary

Corn No. 2-y range 1.60-2.00, average 1.76; @Wheat No. 2-y range 2.40-3.10, average 2.77; Barley No. 3 range 1.20-1.60, average 1.45; Oats No. 2 range 1.55-1.80, average 1.66; Soybeans

No. 1 range 4.80-5.40, average 5.06; Ear Corn range 45.00-60.00, average 53.00.

Month Ago

Corn No. 2-y range 1.68; @Wheat No. 2-y range 2.75; Barley No. 3 range 1.45; Oats No. 2 range 1.66; Soybeans No. 1 range 4.77; Ear Corn range 51.44.

Year Ago

Corn No. 2-y average 2.51; @Wheat No. 2-y average 3.05; Barley No. 3 average 1.65; Oats No. 2 average 1.17; Soybeans No. 1 average 4.92; Ear Corn average 65.48.

Regional Hay

May 4, 1987

Eastern, Pa.

On-Farm Sales

HAY & STRAW MARKET FOR EASTERN PA. (All Hay No. 2 and better prices paid by dealers at the farm and per ton.) Hay & Straw steady to weak; Demand still good in some areas.

Alfalfa 85.00-120.00, few 145.00; Mixed Hay 60.00-100.00; Timothy 60.00-100.00; Straw 60.00-90.00; Mulch 35.00-45.00.

Lancaster Co. Auctions

SUMMARY OF LANCASTER CO. HAY AUCTIONS For Week Ending 5/1/87. PRICES PER TON: LOADS: 292 Hay, 59 Straw, and 21 Ear Corn.

Alfalfa 90.00-158.00; Mixed Hay 77.00-140.00; Timothy 81.00-150.00; Straw 114.00-145.00; Ear Corn 59.00-68.00.

Central Pa. Hay Auctions

SUMMARY OF CENTRAL PA. HAY AUCTIONS For Week Ending 5/1/87. PRICES PER TON: LOADS: 194 Hay, 30 Straw and 6 Ear Corn.

Alfalfa 85.00-150.00; Mixed Hay 67.00-110.00; Timothy 50.00-105.00; Straw 70.00-130.00; Ear Corn 60.00-76.00.

Vintage Hay

Paradise, Pa.

Thursday, May 7, 1987

Report Supplied by Auction

19 loads.

Alfalfa, 74.00-119.00; Timothy, 72.00-85.00; Mixed Hay, 52.00-124.00; Straw, 104.00-116.00.

New Wilmington Hay

New Wilmington, PA.

Friday, May 1, 1987

Report Supplied by Auction

53 lots hay.

Alfalfa: 42.50-175.00, mostly 125.00-175.00; Mixed Hay: 35.00-140.00, mostly 60.00-100.00; Timothy: 34.00-82.00; Clover: 1 at 65.00; Straw: 7 lots, 55.00-65.00, 1 at 39.00; Ear Corn: 8 lots, 52.00-60.00; Oats: 2 lots 1.77-1.85/bu.

New Holland Hay

New Holland, PA

Monday, May 4

Report Supplied by Auction

132 loads.

Alfalfa, 72.00-160.00; Mixed Hay, 70.00-165.00; Timothy, 90.00-138.00; Orchard Grass, 86.00-70.00; Straw 92.00-130.00; Ear Corn, 64.00-76.00; Oats, 1.95 and 2.70 bu.

Chambersburg Hay

Chambersburg, PA

Thursday, May 7, 1987

Report Supplied by Auction

Mixed Hay, 85.00-100.00; Alfalfa, 80.00; Wheat Straw, 67.00.

48% Soybean Meal, \$223.00

Distillers Grains, \$155.00

Per Ton — Delivered

EVEN LOWER PRICES FOR LARGER QUANTITIES.

Buy up to 11 tons and save more! No extra charge to blend these ingredients

NOTE We can sell for less because we sell only to people who pay promptly

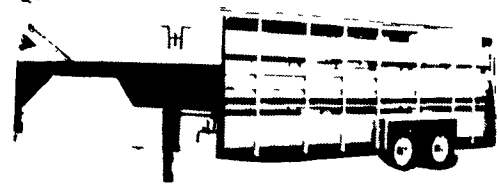
WALKER COMPANY

Gap, PA 17527

717-442-4169 (Collect)



TED WALTZ



**Livestock Hauling
Local and Long Distance**

111 Little Washington Rd
Downingtown, Pa. 19335

Call Evenings
(215) 942-3324

HERE TO STAY!

**MAKE 1987 THE YEAR TO GET ACQUAINTED WITH
NEW HOLLAND SALES STABLES, INC. - THE ACTION AUCTION**

MONDAY

FAT HOGS

EARLY BIRD HOG SALE

7:30 AM
For Your Protection Your Hogs Must Be Identified

10:00 AM

HORSES MULES

11:00 AM

**HAY
STRAW
GRAIN**

**1:30 PM
BEEF SALE
CALF, SHEEP,
GOATS**

WEDNESDAY

11:00 A.M.

COWS

HEIFERS, BULLS

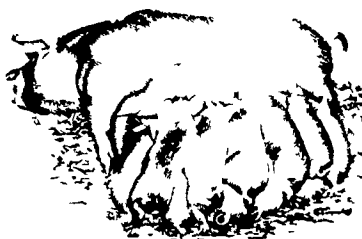
NEW HOLLAND SALES STABLES, Inc.

12 Miles East of Lancaster
on Route 23, New Holland, Penna

**The Action Auction
717-354-4341**

Mgr - Abe Diffenbach - 717-393-4464
Norman Kolb - 717-397-5538
Field Representatives
Alan Diffenbach 717-656-9806
Luke Eberly 215-267-6608 - 738-1865

**WEDNESDAY - 1:30 P.M.
FEEDER PIG SALE**



We endeavor to keep our barns cleaner than yours. State graded until 12 Noon

THURSDAY

10:00 AM

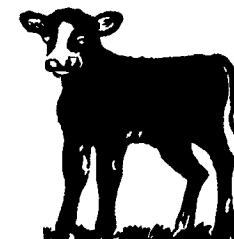
BULLS -



**STEERS -
BEEF COWS**

2:30 P.M.

CALVES



**SHEEP
GOATS**

**Market your livestock thru New Holland Sales, your neighbor does
Pick-up your check before you leave**