

York Co. DHIA

(Continued from Page D19)

Dan-Patti Hushon	8	2 2	85 0	14,321	591
Bupplyn Farms Farm 2	B3	81 9	88 5	17,303	590
Leroy Hertzler	B3	30.0	84 9	16,273	586
Elwood T Krick	B3	85 0	90 0	15,295	584
Wayshar Farm	B3	99 4	87 5	15,772	582
Lonnie Robinson	B3	74 9	89 5	15,985	581
Eisenhart Bros	B8	99 2	90.8	17,171	580
Elvin R Deiter	G3	62 5	84 2	16,404	579
Robert J Reheard	B3	37 8	87.4	17,835	577
Howard G Taylor	B3	56 9	85 5	16,854	573
David L & Chris Druck	B3	73 3	81.4	16,466	573
Deal Holsteins Farm	B3	117 9	90.0	16,342	573
Bald Eagle Farm	B3	57 9	85 3	15,965	570
Kenneth G Glatfelter	G3	63 1	88 1	16,340	568
James W Miller	B3	106 3	91 3	15,678	567
Kenneth L Rexroth	B3	139 4	84 7	15,107	566
Albert Neufeld	B3	117 4	90 2	15,978	563
Robt Baumgardner Jr	G3	64 8	86 7	17,386	562
Barrens View Fm	B3	67 4	89 7	15,845	560
John C Krone	B3	46 6	87 5	15,680	554
Titus Walker	G3	32 9	85 4	15,367	554
Walter L Amstutz	B3	41 3	83 1	16,108	551
Dale & Darla Doll	3	80 1	86 8	16,566	550
Woodbine Farms	3	3-5	288	17,820	3 9 709
237	3	3-5	305	22,524	2 9 664
233					
Ellis Crowl					
B-92	3	10-1	305	19,858	3 2 652
Y-36	3	5-10	305	19,856	3 5 708
Ida	3	5-5	305	19,095	4 0 766
Y-182	3	4-8	305	20,468	3 7 767
Y-201	3	4-3	305	20,041	3 6 731
Y-247	3	3-7	305	17,241	4 4 759
Sinking Spring Fm inc					
Olive	3	7-8	305	21,396	3 1 677
Rutter Bros					
Lil	2	14-2	305	15,661	4 5 720
Ellen	2	8-5	305	16,056	4 2 678
Princes	2	8-3	305	15,238	5 1 781
Button	2	5-4	305	16,585	5 1 849
Raeann	2	5-2	305	17,453	4 5 793
Preciou	2	3-5	305	14,654	5 1 748
Beshore Farms					
Scranto	3	2-0	305	22,349	3 4 771
Albert Dehoff					
43R	3	5-4	297	20,027	3 3 674
123A	3	3-11	305	24,140	2 7 655
*147A	3	3-2	305	19,151	3 6 699
149A	3	3-4	305	19,556	4 0 796
Elwood T Krick					
149	3	4-0	305	19,634	3 6 711
Leaspring Farm					
Beebee	3	5-11	305	20,139	3 8 780
Earl Fuhrman					
Bell	3	7-3	305	22,820	3 0 701
Sunshin	3	6-7	305	21,111	3 3 708
96	3	4-8	305	22,212	3 3 739
Rodman C Thompson					
Idette	3	2-2	305	16,915	3 8 657
RR & MR Stewart					
Susie	3	4-8	305	16,973	3 8 659
Smysers Richlawn Fms					
Vivian	3	8-11	271	21,802	4 0 883
Panda	3	7-1	305	26,948	3 0 822
Georgia	3	2-11	301	24,819	3 2 802

T Edwin Johnson					
Chit	3	4-4	305	17,954	3 7 665
Patti	3	4-3	305	16,964	4 2 727
Leroy Bupp					
Valentin	3	9-10	305	18,954	3 4 662
Paul R King					
Jewel	3	5-9	273	17,690	4 1 735
Wayne B Mummert					
20	3	7-4	305	26,320	3 0 803
7	3	4-1	305	19,855	3 3 660
73	3	2-10	305	21,402	3 3 726
Desota&Robt Burchett					
105	3	6-11	305	21,796	3 3 740
9	3	7-3	278	21,289	3 6 787
113	3	2-8	305	18,940	3 4 656
Lynn Wolf					
Nora	3	3-0	305	19,962	4 4 889
Ramsey S Cooper Jr					
Boots	3	6-6	303	21,046	3 1 664
Hillary	3	4-2	305	21,115	3 4 737
Horace E Herndel					
17E	3	3-4	305	21,627	3 1 688
129B	3	3-2	305	22,595	2 9 664
John H Doll Jr					
Tina	3	6-6	305	22,004	3 0 669
Kenneth L Rexroth					
*86	3	4-7	305	19,000	3 7 703
Rick L Cook					
58	3	5-8	305	19,229	3 6 710
76	3	4-1	305	20,247	3 2 660
Bupplyn Farms Farm 2					
Karen	3	4-1	305	18,406	3 5 659
Elvin G Molson					
186	3	5-9	305	20,961	3 4 732
197	3	5-6	305	22,280	3 4 763
183	3	3-0	305	16,768	4 0 675
38	3	2-3	305	14,524	4 6 681
Mervin W Hertzler					
Caroln	2	8-0	305	18,775	4 3 815
Anissa	2	2-2	305	16,076	4 3 705
Tamanth	2	2-3	305	15,944	4 2 679
Gary W Thoman					
Glenda	3	4-11	305	20,904	3 2 677
Linda	3	4-4	305	20,650	3 7 776
Pansy	3	12-11	305	18,644	3 4 652
Perrydell Farms					
142	3	5-1	305	16,174	4 5 738
213	3	2-1	305	14,906	4 5 674
David Stewart					
Layton	3	5-6	298	17,673	4 4 793

#Quota	3	5-4	305	18,122	3 7 680
Rose	3	3-11	305	19,373	3 7 731
Ash	3	3-6	305	17,832	3 6 659
Walnut Hill Farm					
Jacklyn	3	6-5	305	18,517	3 7 694
Minnie	3	5-10	305	28,359	2 8 804
Deidre	3	4-1	305	18,004	3 6 657
Jade	3	2-7	305	18,627	3 6 680
Double D Farm					
269	3	3-7	305	19,630	3 6 707
Deal Holsteins Farm					
10	3	5-2	305	22,203	3 0 688
3	3	4-9	305	22,651	3 4 792
Howard G Taylor					
78	3	7-6	305	19,883	3 6 729
George Innerst & Sons					
35	3	3-4	305	19,558	3 3 661
27	3	3-0	305	19,390	3 3 654
44	3	7-11	305	20,148	3 5 714
Jim&Holly McCaffree					
624	3	5-7	287	20,576	3 8 792
Helen	3	3-4	305	19,012	3 7 711
Betsy	3	3-2	298	18,444	3 5 652
William Myers					
Morgan	3	4-0	299	20,862	3 2 670
Dan & Patti Hushon					
Beth	3	3-4	305	18,361	3 9 717
Steve W Sydor					
39	3	2-7	305	19,895	3 3 661
Bradley Emig					
Corina	4	8-3	300	12,566	5 2 663
James W Miller					
54	3	6-10	305	21,266	3 8 821
6	3	5-7	305	18,525	4 0 750
63	3	5-8	305	16,683	4 2 713
294	3	3-10	305	19,823	3 4 678
299	3	3 10	305	18,465	3 6 673
86	3	3-9	305	18,352	3 7 688
46	3	6-8	305	18,316	3 6 669
88	3	3-6	305	16,229	4 1 681
97	3	2-0	305	13,509	4 8 658
John Wilcox					
10	3	4-9	305	22,350	3 2 728
110	3	4-1	305	23,056	3 4 784
McRai Dairy Farm					
157	3	7-6	305	22,754	3 5 804
202	3	6-7	305	22,166	3 3 733
Dputy58	3	6-3	296	19,557	3 9 772
219	3	5-2	281	19,756	3 6 718

(Turn to Page D21)

FISHER'S PAINTING & RESTORATION



- ALL TYPES OF INTERIOR & EXTERIOR PAINTING
- SANDBLASTING
- ROOF COATING
- RESTORATION & WATERPROOFING ON STONE & BRICK BUILDINGS

We Specialize In Farm Buildings, Churches, Feed Mills, Water Tanks, Etc. With Aerial Equipment

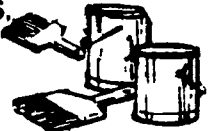
FREE DELIVERY WITHIN 20 MILES
STORE, SHOP AND OFFICE LOCATED IN OLD STONE BARN AT:
4056 A Newport Road, Kinzers, PA 17535

(Across From Pequea Valley School)

717-768-3239

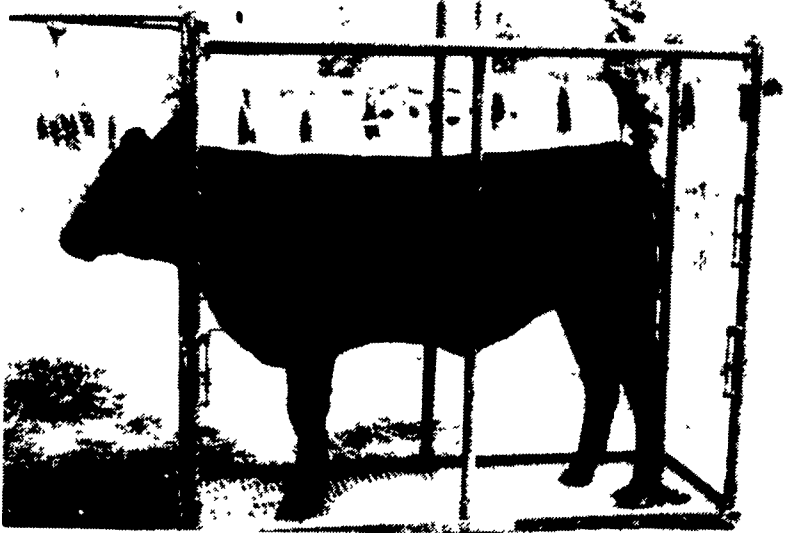
FISHER'S PAINTING OUTLET STORE

- TOP QUALITY PAINTS, LADDERS & ACCESSORIES AT LOW PRICES
- WE BUY DIRECT FROM FACTORY IN LARGE QUANTITIES & PASS THE SAVINGS ON TO YOU
- ROOF COATINGS IN VARIOUS COLORS
- WE HAVE LARGE LOTS OF FACTORY DISCONTINUED COLORS, MISMATCHES AND JOB LEFTOVERS AT VERY LOW PRICES



PAUL B. Zimmerman INC.

BLOCKING CHUTE



- For safe and easy grooming, washing and clipping cattle
- Expanded metal floor stays cleaner and gives more traction
- Assembles and disassembles quick and easy
- Can easily be moved and loaded by one person

PAUL B. ZIMMERMAN, INC.

Call or Write For Additional Information And Your Nearest Dealer

295 Woodcorner Rd
Lititz, PA 17543
1 Mile West of Ephrata
Phone: 717-738-1121

"P.V.C. WHITE RAIL FENCE"

Perfect For Farm, Home, Recreation Area, Or Wherever Fence Is Used

2, 3 OR 4 RAIL FENCING



3-Rail Fence w/Gates
"Never Need Paint"



4-Rail Fence Horse Pasture
"Horses Won't Chew"

P.V.C. MANUFACTURED PRODUCTS

- | | | | |
|------------------|---------------|---------------|------------|
| Lamp Posts | Picnic Tables | Sand Boxes | Sign Posts |
| Yard Fence | Horse Fences | Gazebos | Dog Cages |
| Race Track Fence | Trellis | Mailbox Posts | |

QUALITY FENCING & SUPPLY, INC.

R.D. #1, Box 428

(717) 354-9760

New Holland, PA 17557

Authorized Dealers

UMBERGER'S of FONTANA
Lebanon, PA
(717) 867-5161

G. BENJAMIN MILLER, JR.
Rouzerville, PA 17250
(717) 762-2386